

Supplementary Figures

Fig. S1. Waterfall plot of duration of exposure vs. best percentage change from baseline

Data cut-off: April 24, 2014.

Abbreviations: 28d cont., 28-day continuous dosing schedule; HNSCC, head and neck squamous cell carcinoma; NSCLC, non-small cell lung cancer; PD, progressive disease; PR, partial response; SD, stable disease; SCC, squamous cell carcinoma; UNK, unknown.

Online only.

Best percent change

Exposure (weeks)

- Ribociclib 50 mg
- Ribociclib 70 mg
- Ribociclib 140 mg
- Ribociclib 260 mg
- Ribociclib 280 mg
- Ribociclib 350 mg
- Ribociclib 400 mg
- Ribociclib 600 mg
- Ribociclib 600 mg - 28d cont.
- Ribociclib 750 mg
- Ribociclib 900 mg
- Ribociclib 1,200 mg



Best unconfirmed response: △ PD ○ SD ☆ PR # UNK

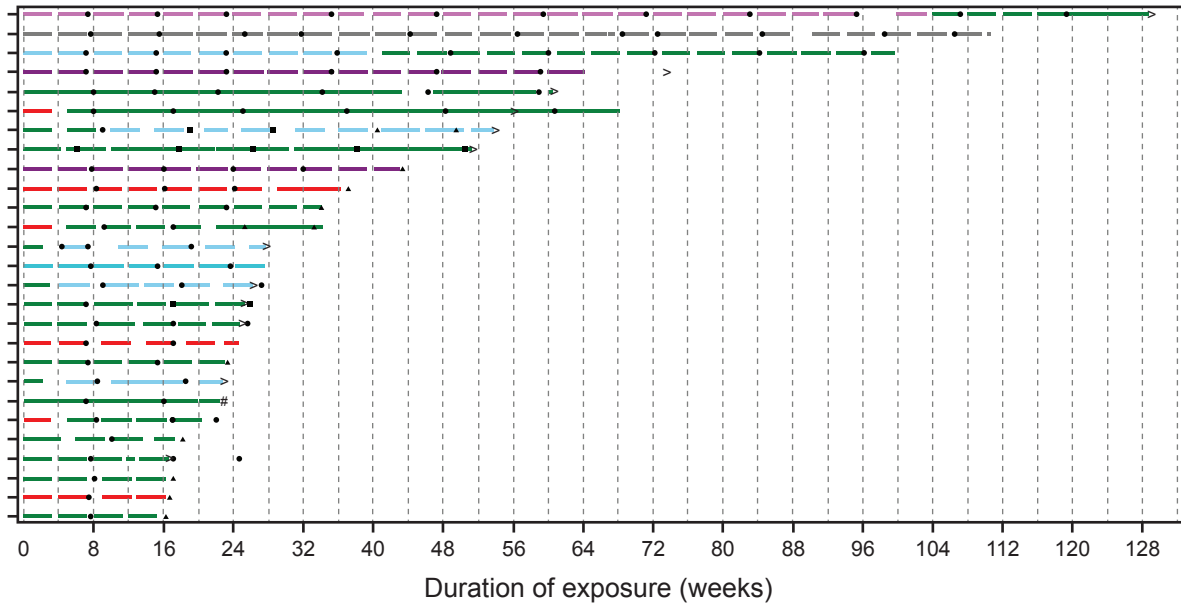
+ Ongoing patient

Figure S2. Duration of exposure in patients with stable disease treated for at least four cycles

Data cut-off: April 24, 2014.

Online only.

■ Partial response • Stable disease ▲ Progressive disease # Unknown > Ongoing patients



Total daily ribociclib dose (mg): ■ 50 ■ 280 ■ 350 ■ 400 ■ 600 ■ 750 ■ 800 ■ 900

Figure S3. Duration of exposure, best percentage change in target lesion, and genetic profile for the 53 patients with available genetic data

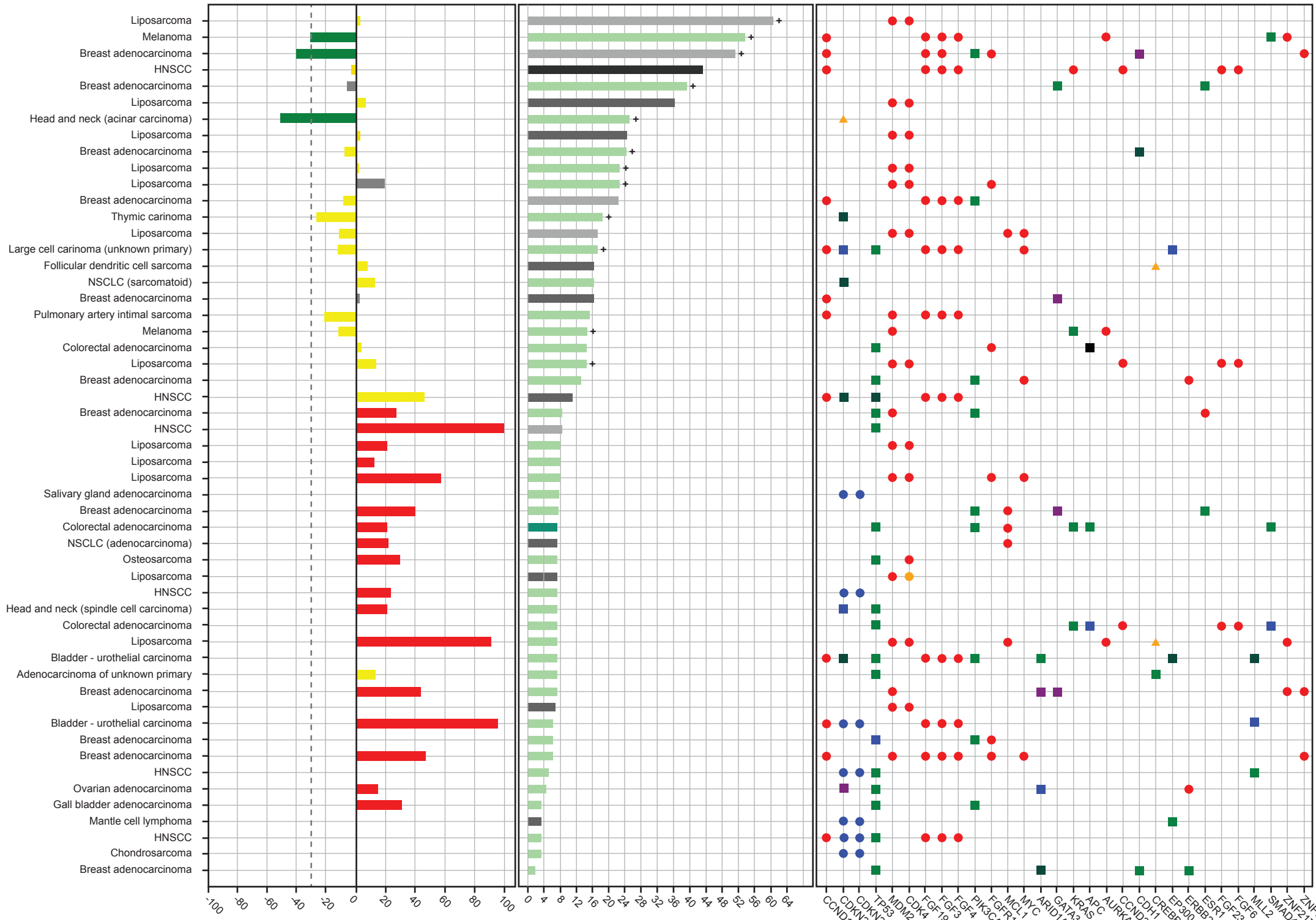
Data cut-off: April 24, 2014.

Abbreviations: 28d cont., 28-day continuous dosing schedule; AMP, amplification; CNV, copy number variation; DEL, deletion; HNSCC, head and neck squamous cell carcinoma; INS, insertion; MUT, mutation; NSCLC, non-small cell lung cancer; PD, progressive disease; PR, partial response; REA, rearrangement; SD, stable disease; SEQ, sequence; TRUN, truncation; UNK, unknown; uSD, unconfirmed stable disease.

Online only.

Best overall response: PR SD uSD PD UNK

● CNV:AMP ● CNV:AMP - REA ● CNV:DEL ▲ REA ■ SEQ:DEL ■ SEQ:DEL+MUT+TRUN ■ SEQ:INS ■ SEQ:MUT ■ SEQ:MUT+TRUN



Best percent change from baseline

Overall exposure (weeks)

Gene

Treatment group: Ribiciclib 600 mg Ribiciclib 600 mg - 28d cont. Ribiciclib 750 mg Ribiciclib 900 mg Ribiciclib 1,200 mg + Ongoing patient