

Figure S1. Examples of the distribution of outputs of Monte-Carlo simulation, representing the approximate sample distribution of the differences in $n=4$ averages (Blue). In Red, a Normal distribution is given for comparison. Note that A) and D) look approximately Normal, while B) and C) show non-Normal skewness, indicating the appropriateness of Monte-Carlo bootstrapping for these circumstances.

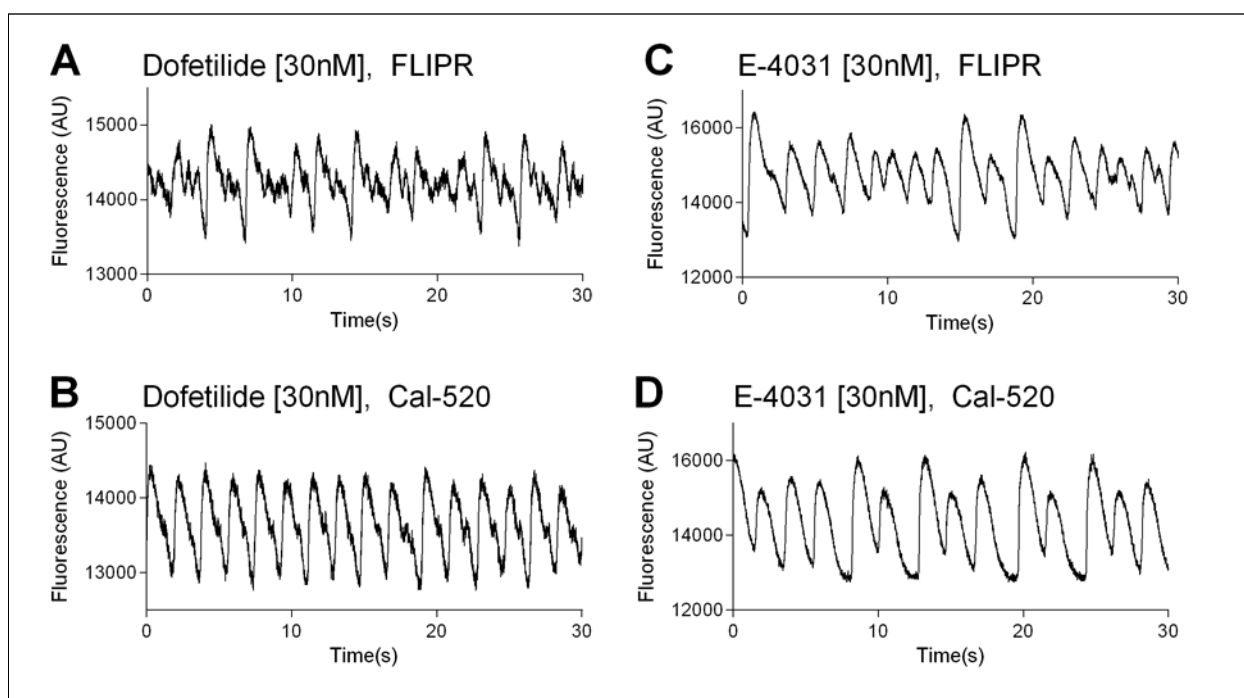


Figure S2. CaT traces of FLIPR and Cal-520 stained cardiomyocytes treated with the highest concentration of Dofetilide and E-4031. All wells exhibited irregular CaT traces displaying varying degrees of EAD.