

SOX12 in lung cancer

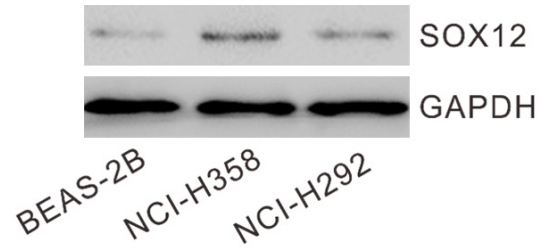


Figure S1. SOX12 protein levels were determined in BEAS-2B (a human normal bronchial epithelial cell line), NCI-H358 and NCI-H292 cells by Western blot.

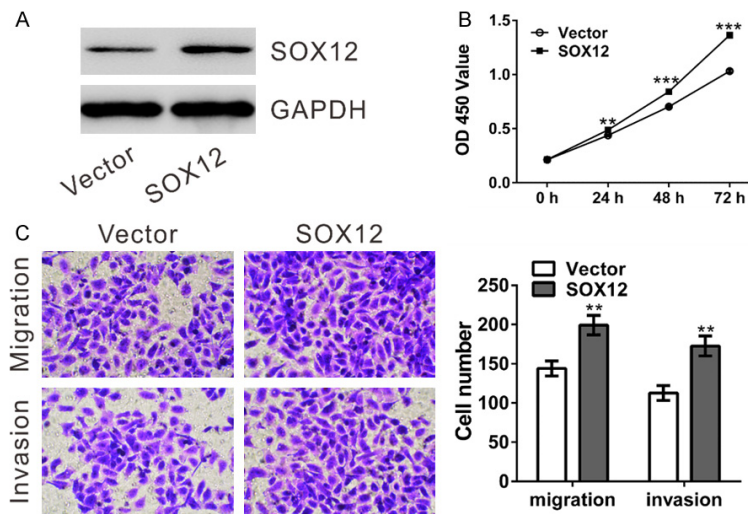


Figure S2. Effects of SOX12 overexpression on cell proliferation, migration and invasion of NCI-H292 cells. The full-length SOX12 were cloned into pCDNA3.1 vector. NCI-H292 cells were transfected with pCDNA3.1-SOX12 (SOX12) or control Vector. A. Validation of SOX12 overexpression by Western blot at 48 h post transfection. B. Cell proliferation was assessed by CCK-8 assay. C. Cell migration and invasion was evaluated by Transwell assays. ** $P < 0.01$ and *** $P < 0.001$ VS Vector.