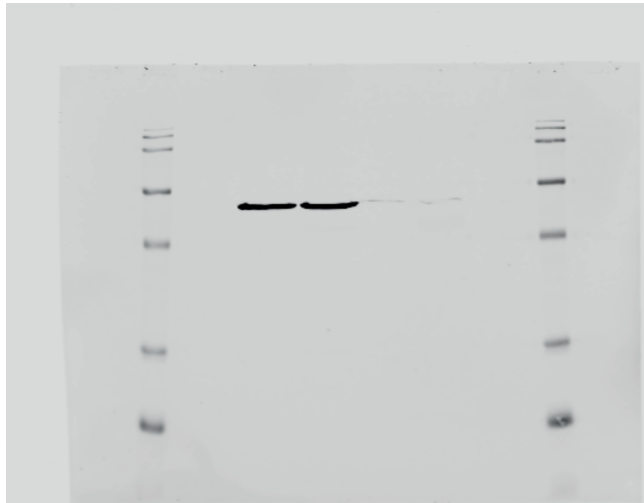
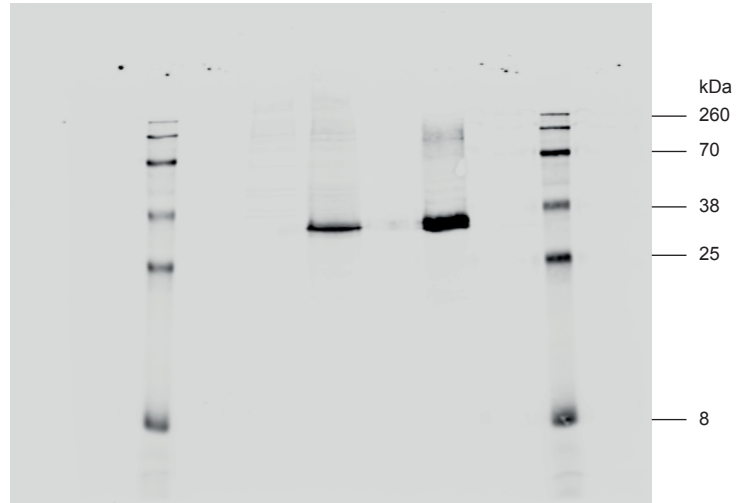


### Figure 1B

Protein Standard used: Chameleon DUO, Li-COR (125 kDa not indicated)



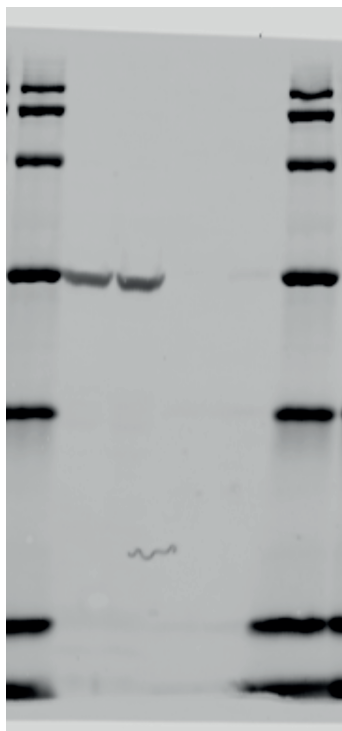
Channel 700  
(anti-β-actin)



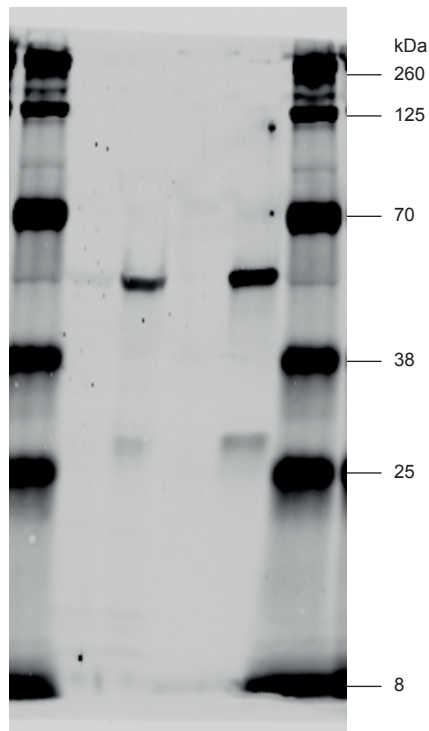
Channel 800  
(anti-E-Tag)

### Figure 1E

Protein Standard used: Chameleon DUO, Li-COR



Channel 700  
(anti-tubulin)



Channel 800  
(anti-human IgG H+L)