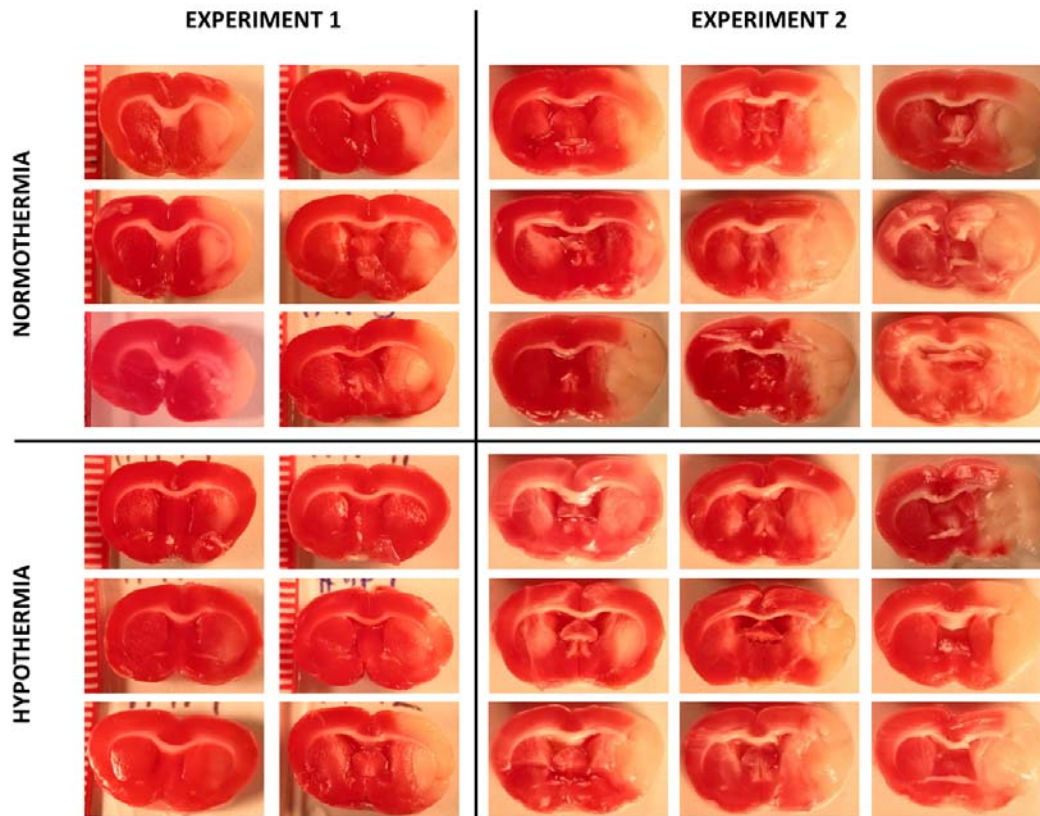


Supplementary Figure 1: Experimental design



Supplementary Figure 2: Comparison of infarcts across Experiments 1 and 2. Representative TTC images from individual animals taken through the centre of the infarct (approximately 1mm relative to Bregma). Infarcts from Experiment 2 encompassed a greater portion of the cortex in both normothermia and hypothermia groups.