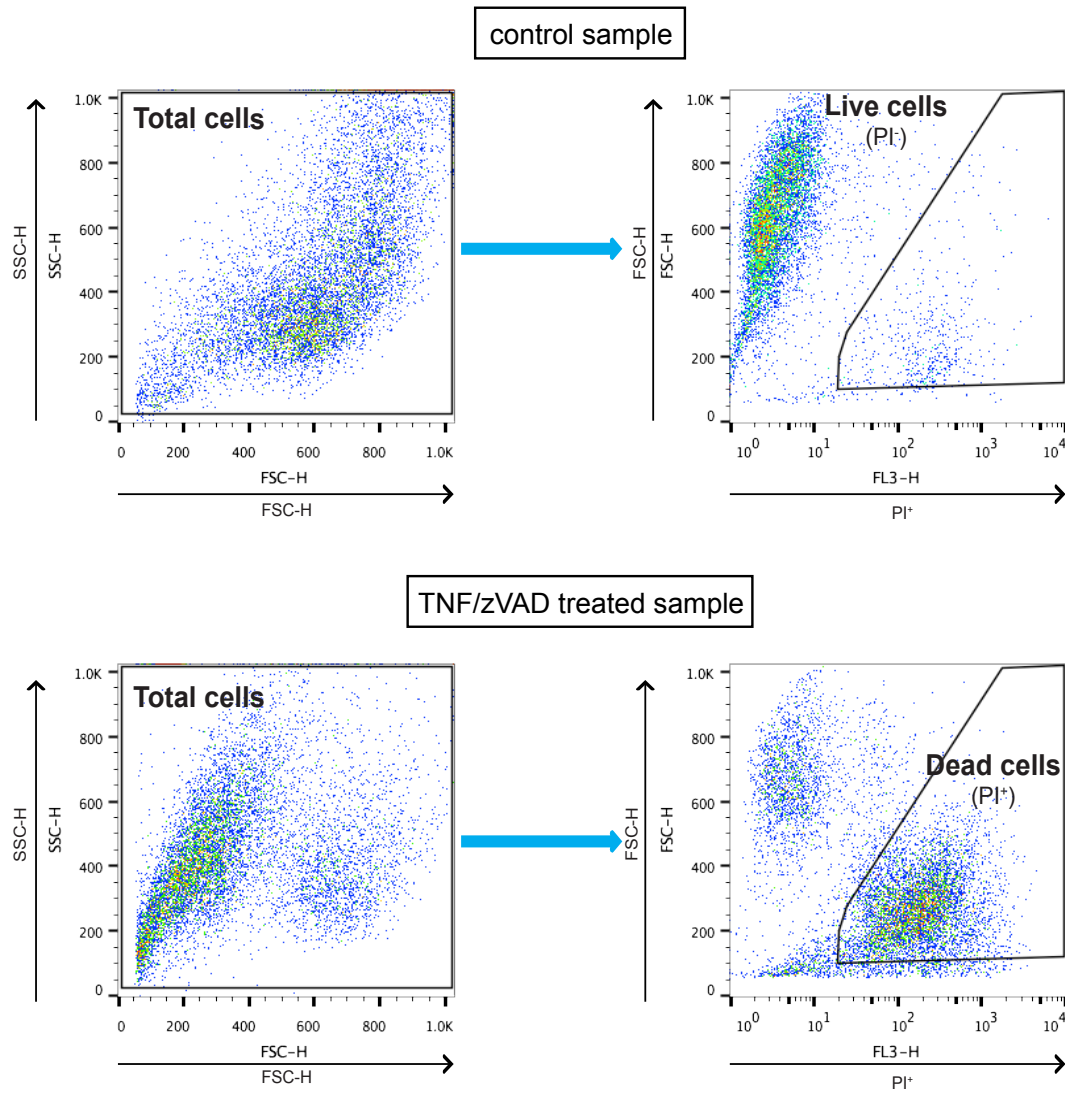


Supplemental Figure 8

FACS Gating Strategy 1: Cell death (PI⁺)

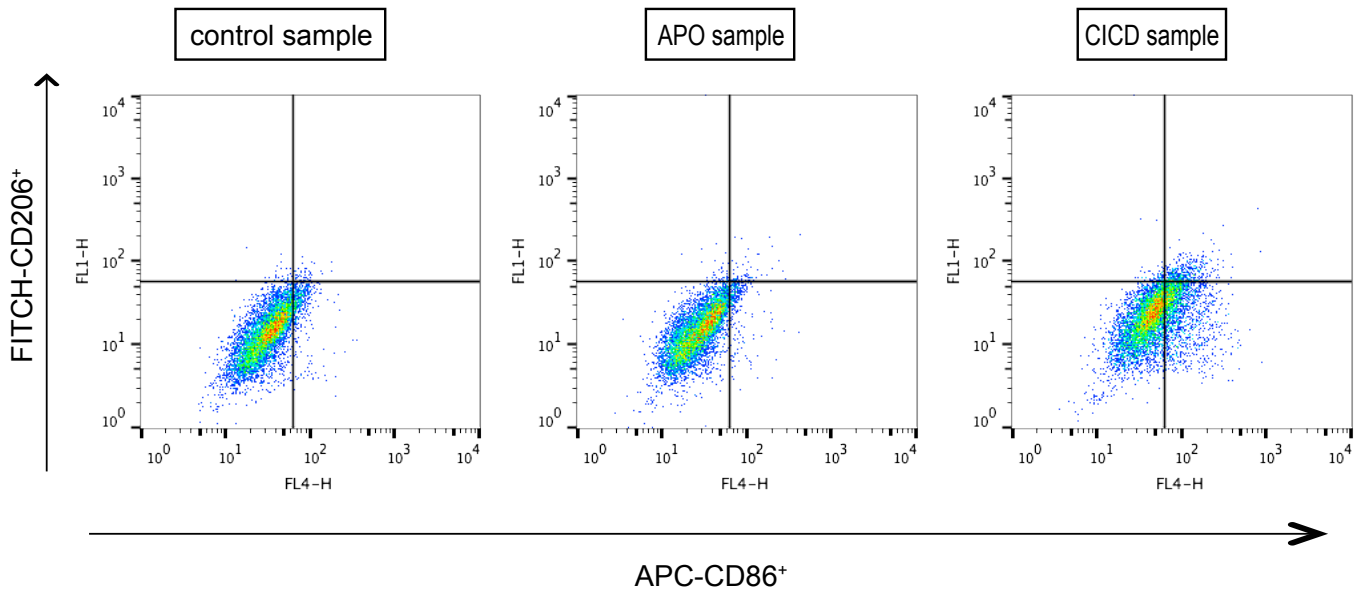
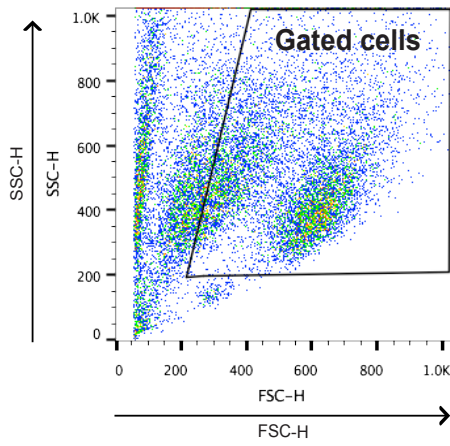
FACSCalibur (BD Biosciences, San Jose, CA)



Figures: 1B-E, 2A

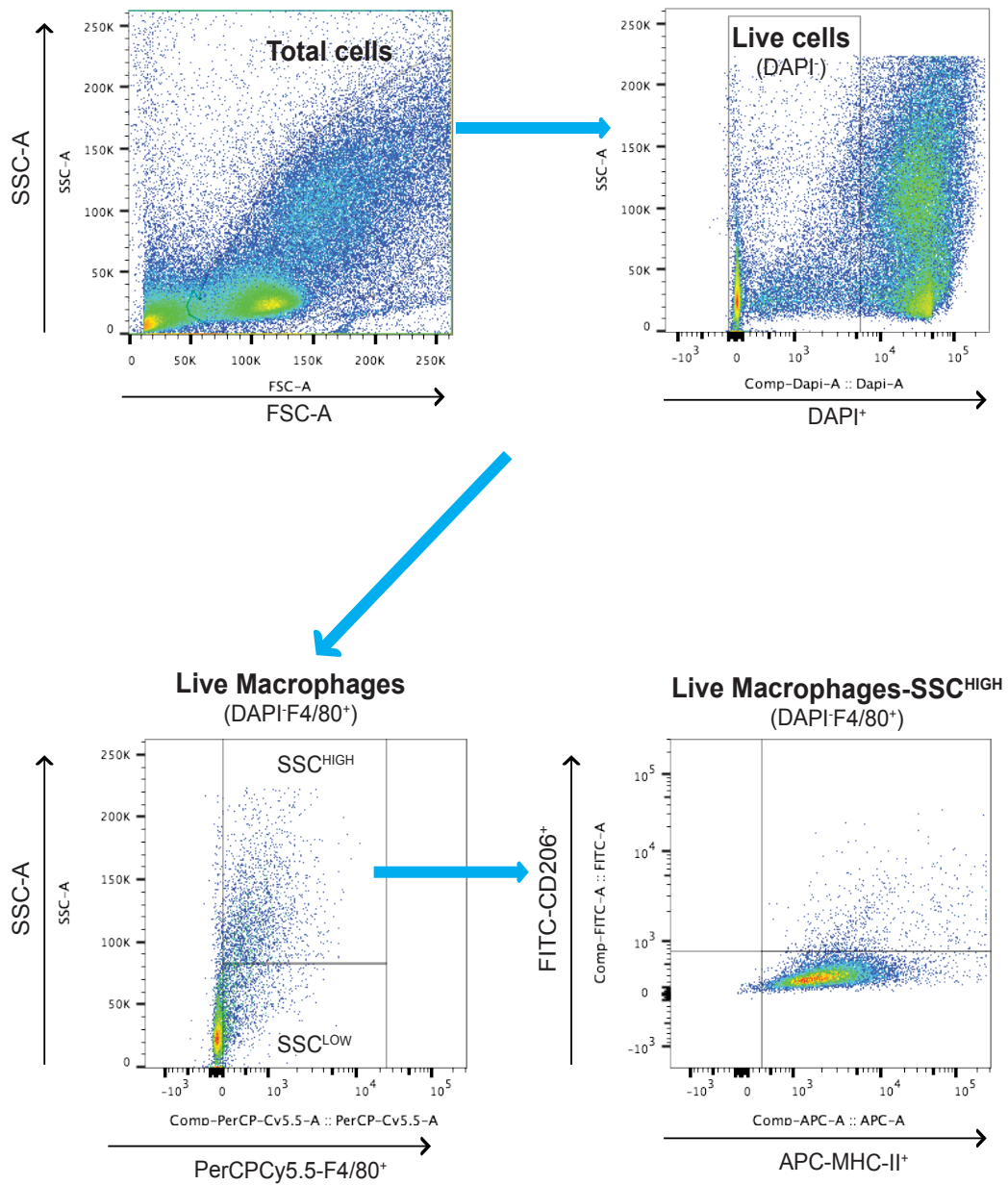
FACS Gating Strategy 2: BMDMs M1/M2 polarization *in vitro*

FACSCalibur (BD Biosciences, San Jose, CA)



Figures: 6B, 6G, S5A, S5B, S5C

FACS Gating Strategy 3: Macrophage *in vivo* tumour infiltration and polarization
BD FACSVers (BD Biosciences, USA)



Figures: S6E, S6H

FACS Gating Strategy 4: T cell *in vivo* tumour infiltration
BD FACSVers (BD Biosciences, USA)

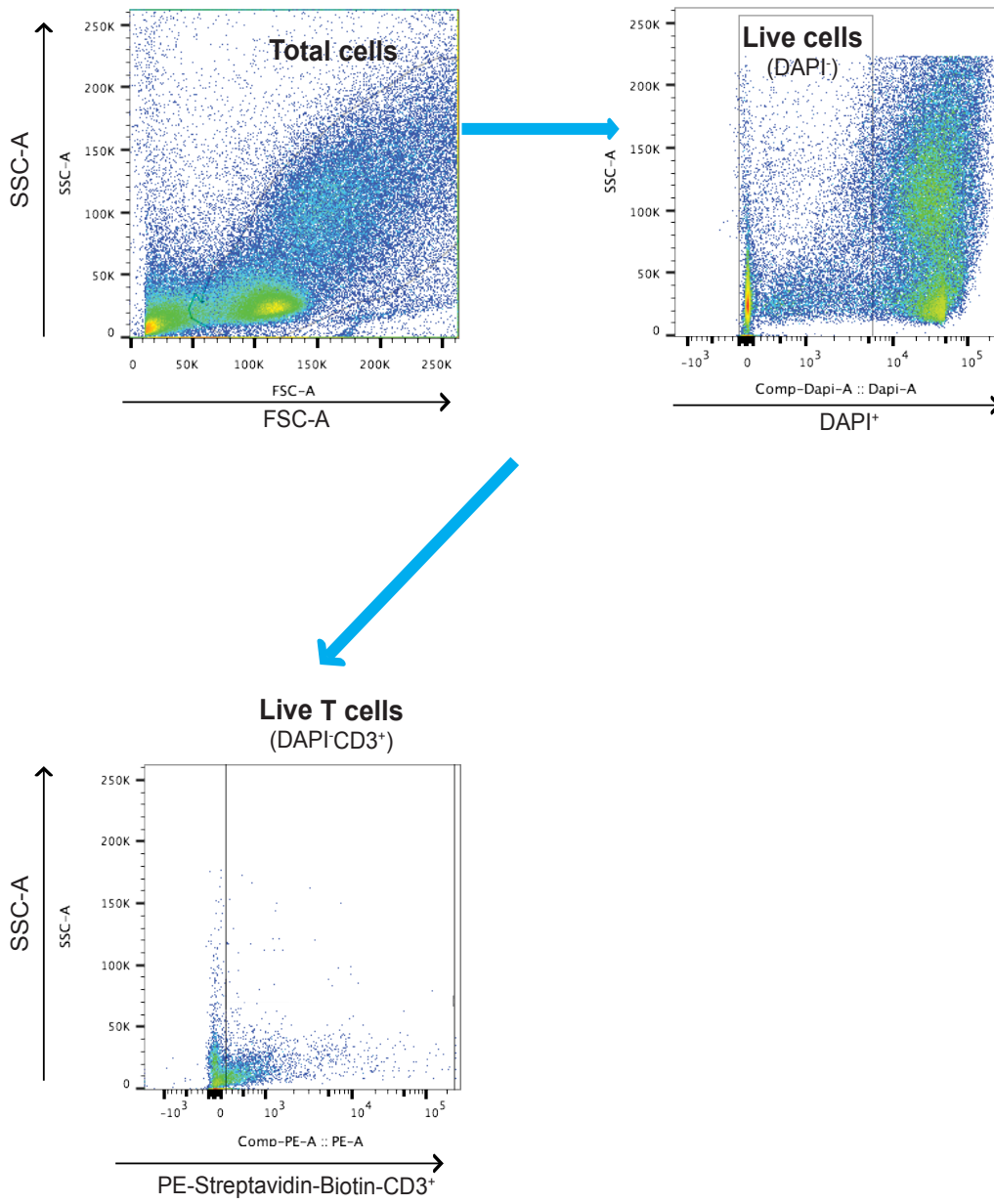
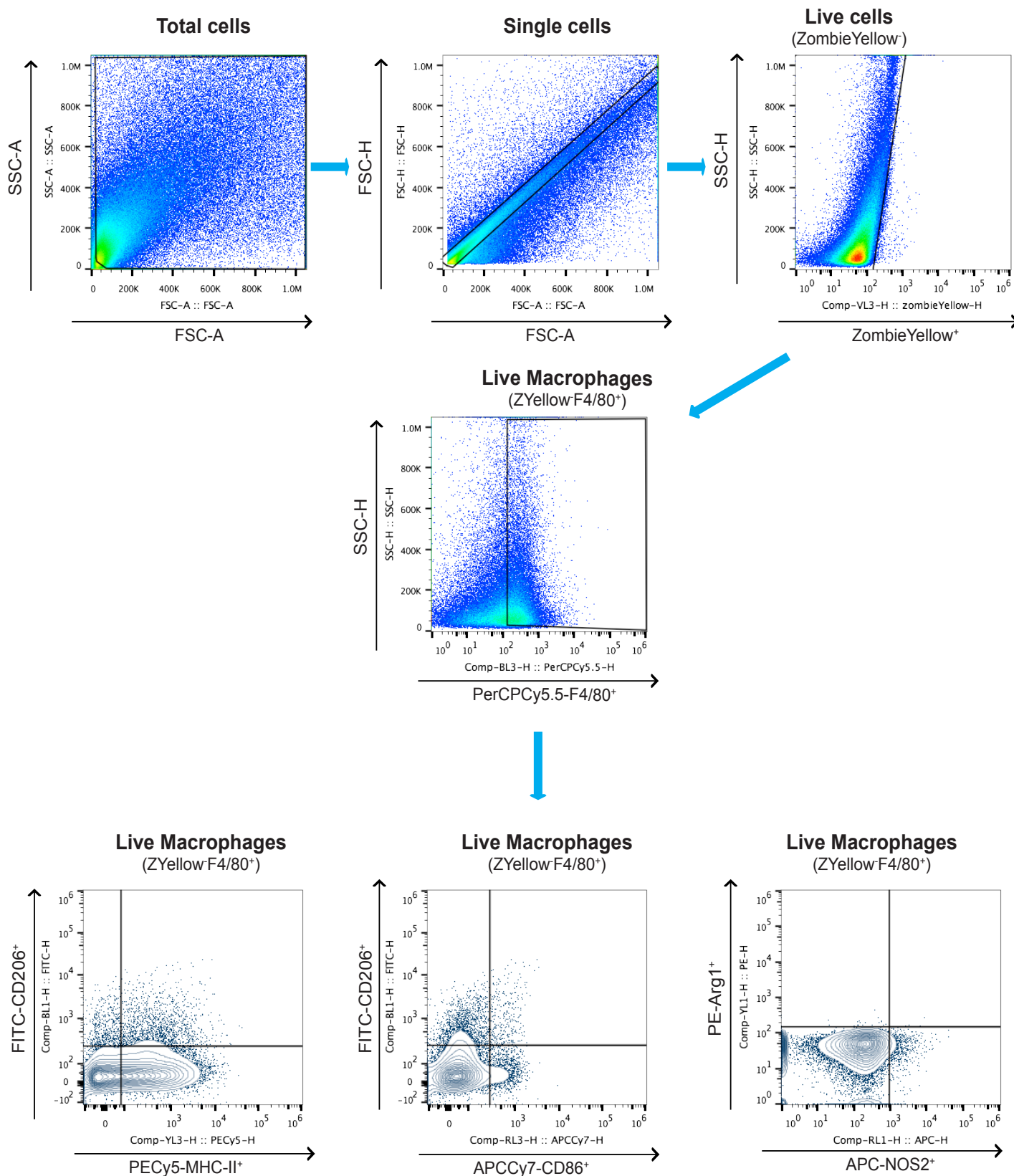


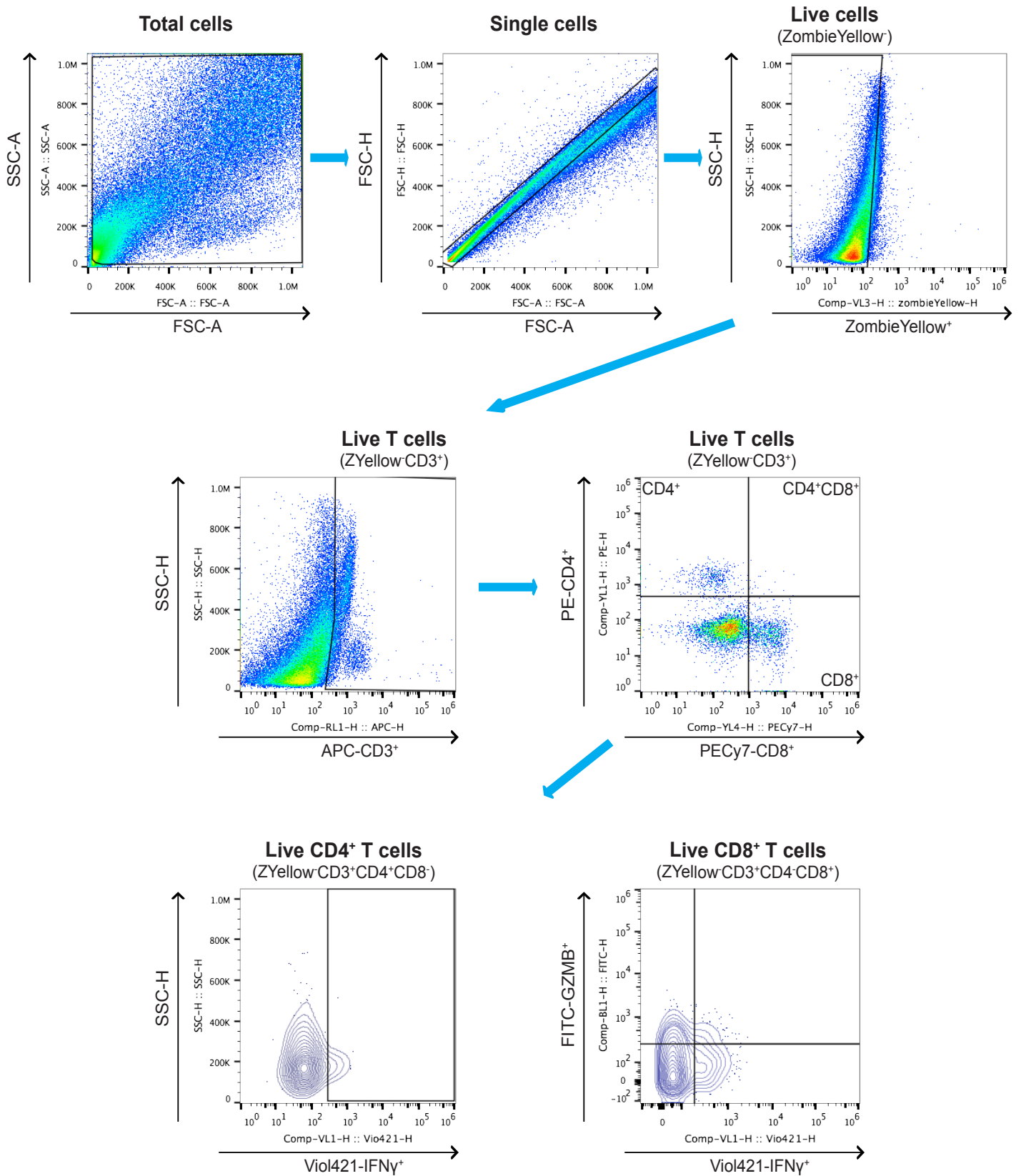
Figure: 7C

FACS Gating Strategy 5: Macrophage *in vivo* tumour infiltration and activation in Responders vs Non-Responders to APO or CICD
Attune NxT (Thermo Fischer Scientific)



Figures: 8A, S7B

FACS Gating Strategy 6: T cell *in vivo* tumour infiltration and activation in Responders vs Non-Responders to APO or CICD Attune NxT (Thermo Fischer Scientific)



Figures: 8B, 8C,S7C

FACS Gating Strategy 7: T cell depletion *in vivo* following anti-Thy1.1 treatment
 Attune NxT (Thermo Fischer Scientific)

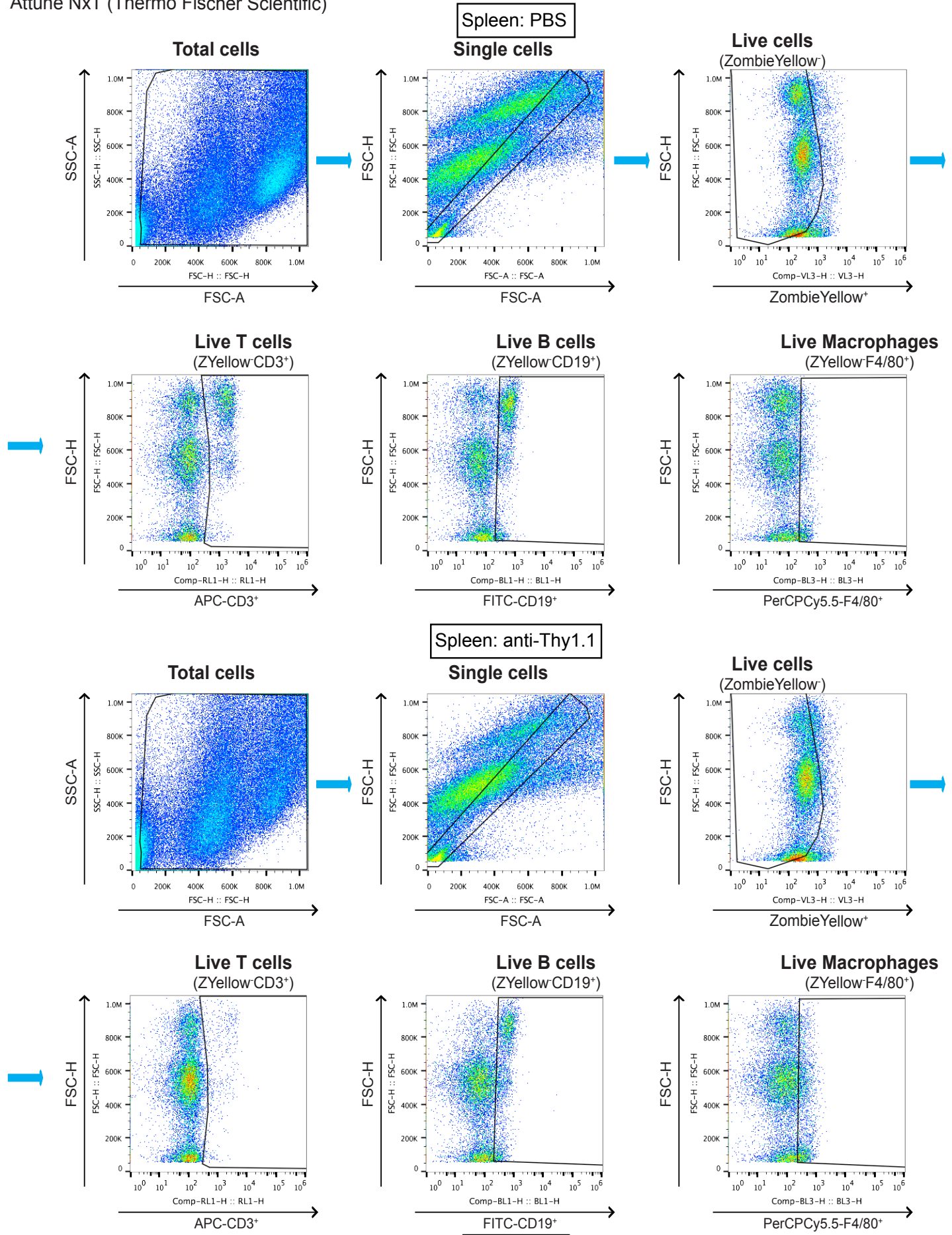


Figure: S7F