

1 **Supplementary figures**

2

3 **Figure S1 Correlation between serum HBV RNA and serum HBsAg at baseline**

4 **(A); Correlation between serum HBV RNA and intrahepatic cccDNA in HBeAg-**

5 **positive CHB patients with higher (B) and lower (C) level of HBsAg at baseline**

6 **(Mean level of HBsAg at baseline as the cut-off value)**

7

8 **Figure S2 Correlation between serum HBV RNA and intrahepatic cccDNA in**

9 **patients with detectable (A) and undetectable (B) serum HBV DNA at 96 weeks**

10 **after NUC treatment**

11

12 **Figure S3 Dynamic changes of serum HBV RNA, HBV DNA, HBsAg and HBeAg**

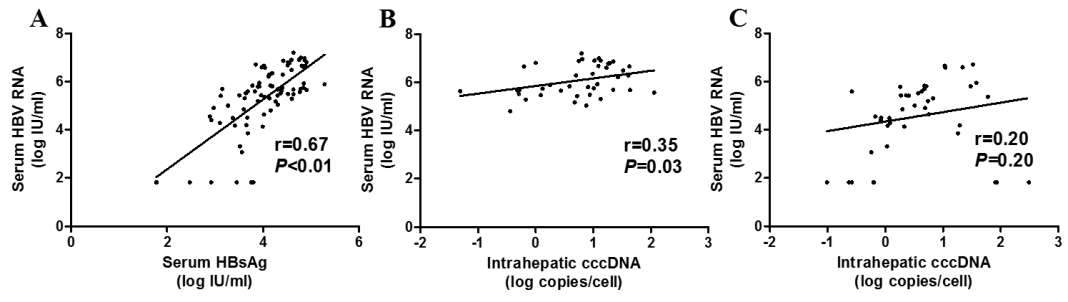
13 **during 96-week NUC treatment (HBsAg, hepatitis B surface antigen; HBeAg,**

14 **hepatitis B e antigen)**

15

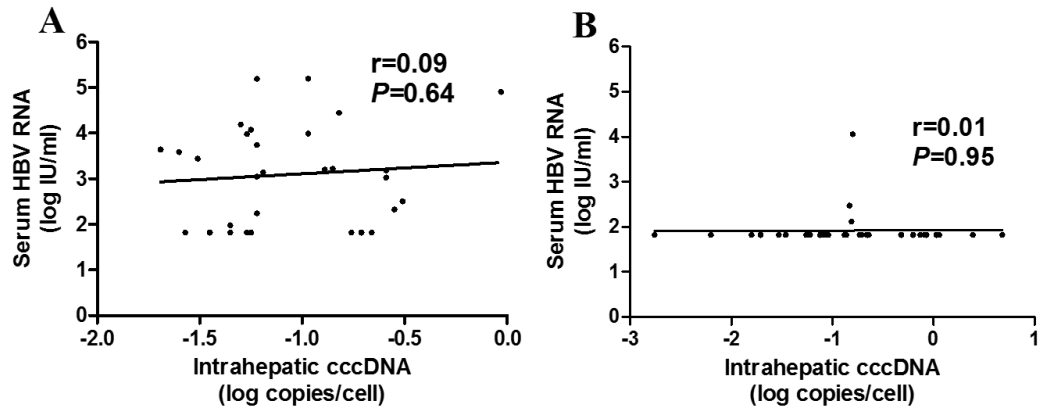
16 **Figure S1**

17



18

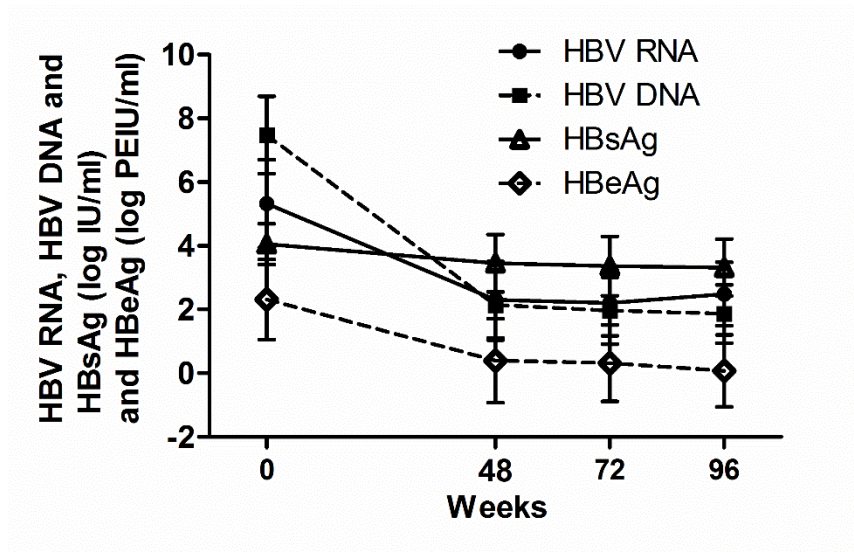
19 **Figure S2**
20



21

22 **Figure S3**

23



24