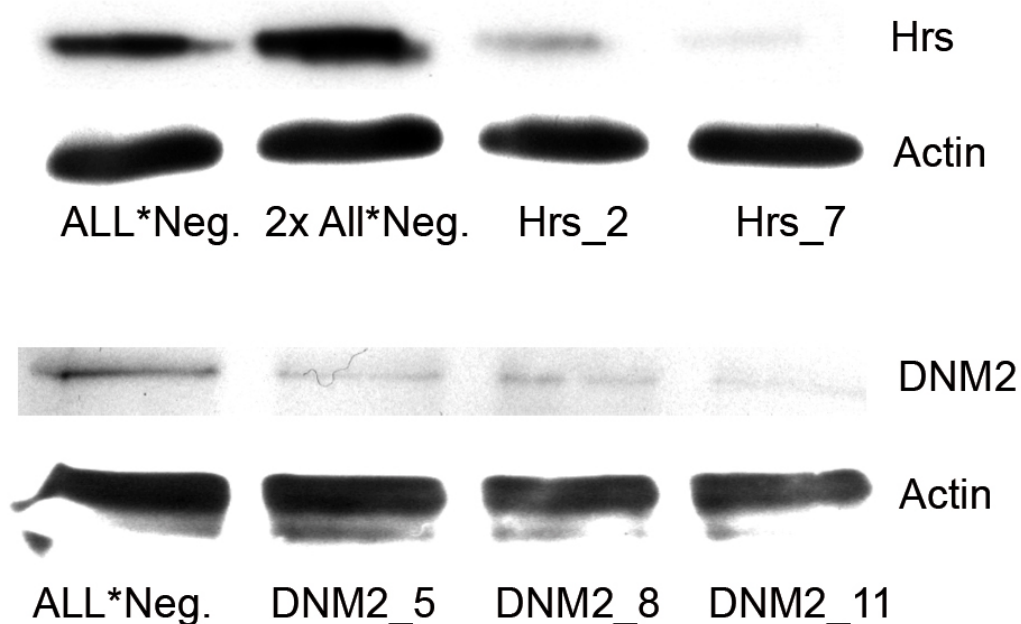


S2



Supplemental Figure 2: Quantitative analysis of Western blots

As an example for knock-down levels achieved during the screen, Western Blots visualizing the expression levels of the two proteins Hrs and DNM2 are shown. Knock-down levels were calculated by comparing the expression levels of the respective protein when targeted by the respective siRNAs compared to the negative control ALL*Neg. Actin expression levels served as loading controls. In lane "2x ALL*Neg.," double the amount of the control siRNA sample AllStarsNegative was loaded. The number following the protein name (e.g. Hrs_2) indicates the number of the siRNA.