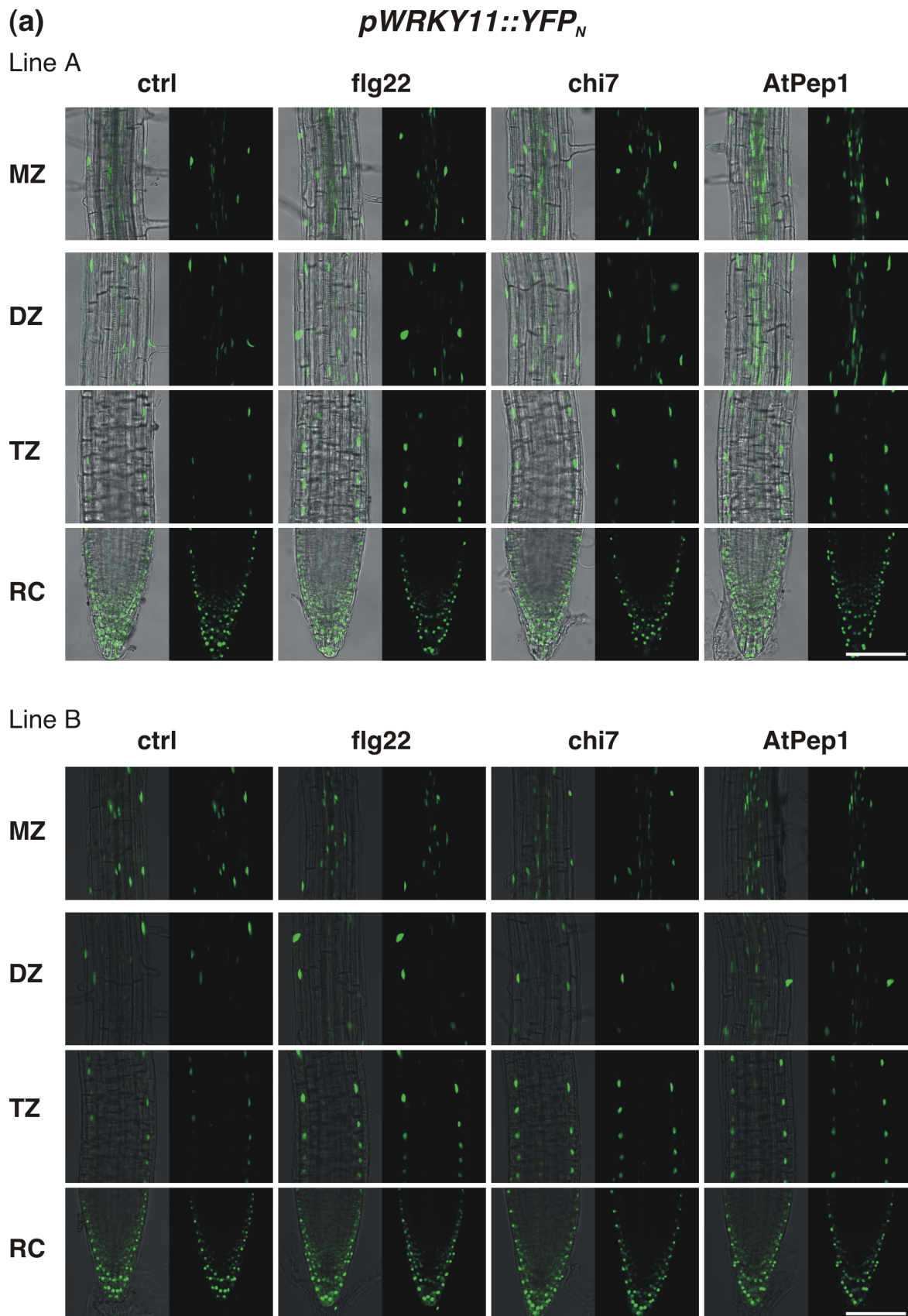


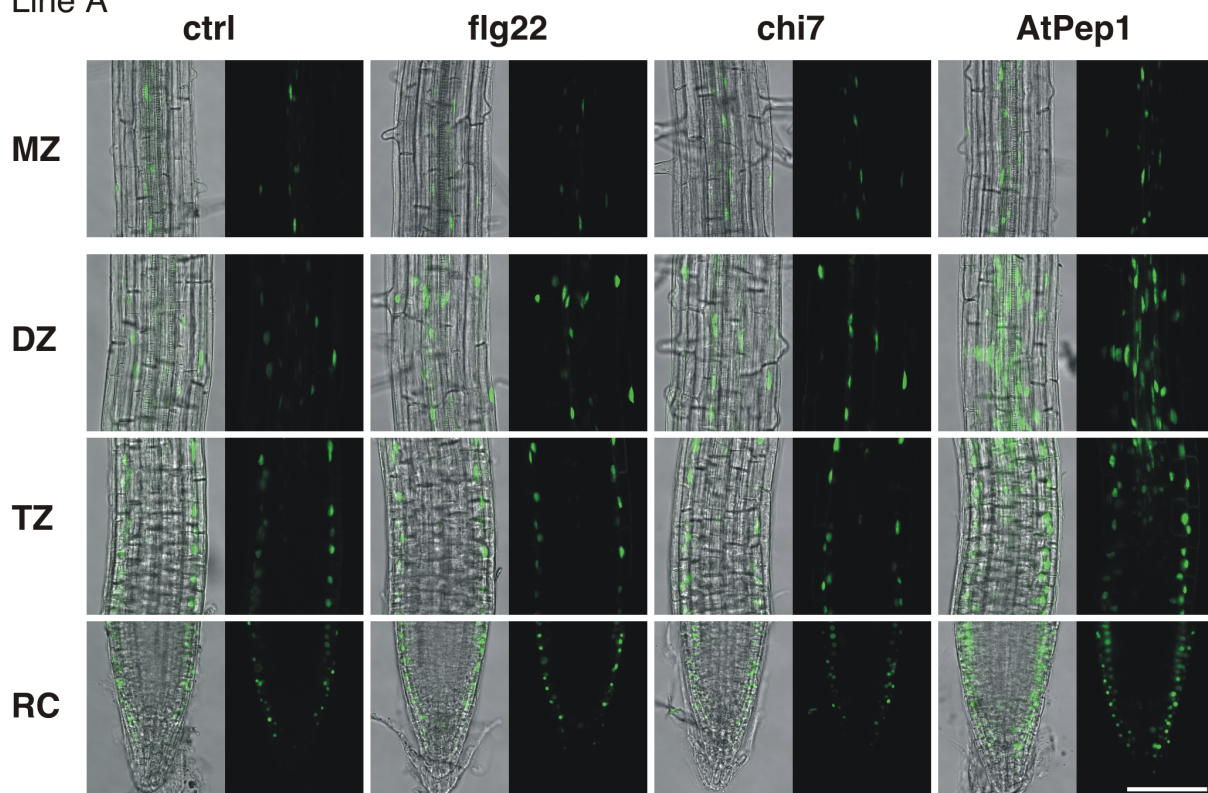
S3 Fig. Effects of elicitors on the expression of *promoter::YFP_N* in the root.

Roots were analysed following treatment with 100 nM flg22, chi7, AtPep1 or 0.5x MS as control. Scale bar 100 μ m. Signal amplification might differ between developmental zones (S5 Fig).

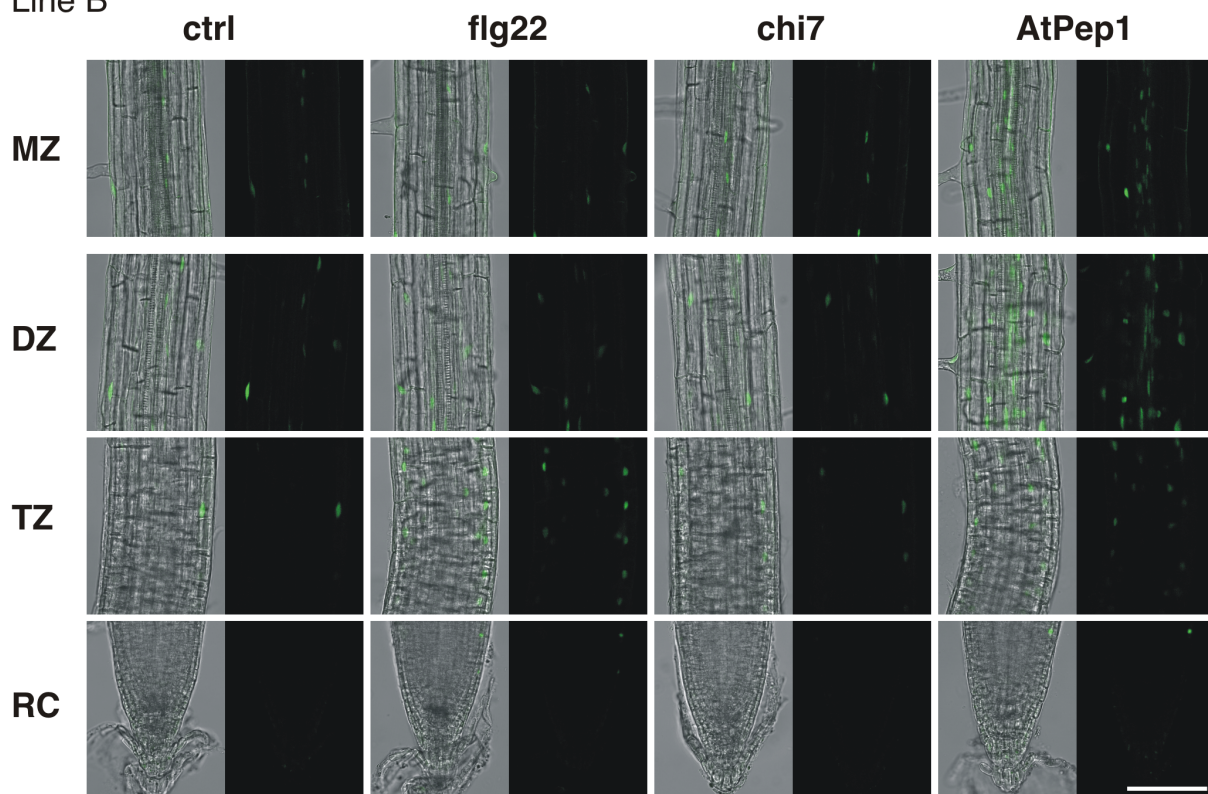


(b) *pMYB51::YFP_N*

Line A



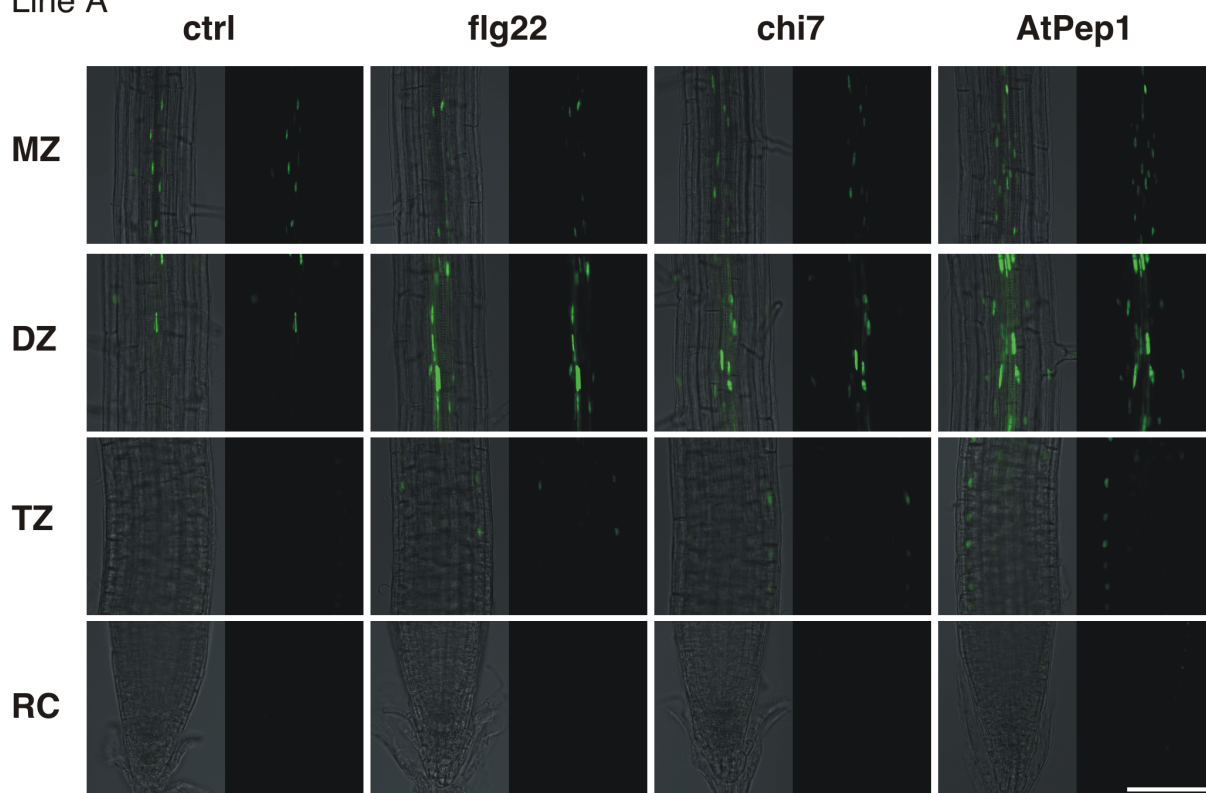
Line B



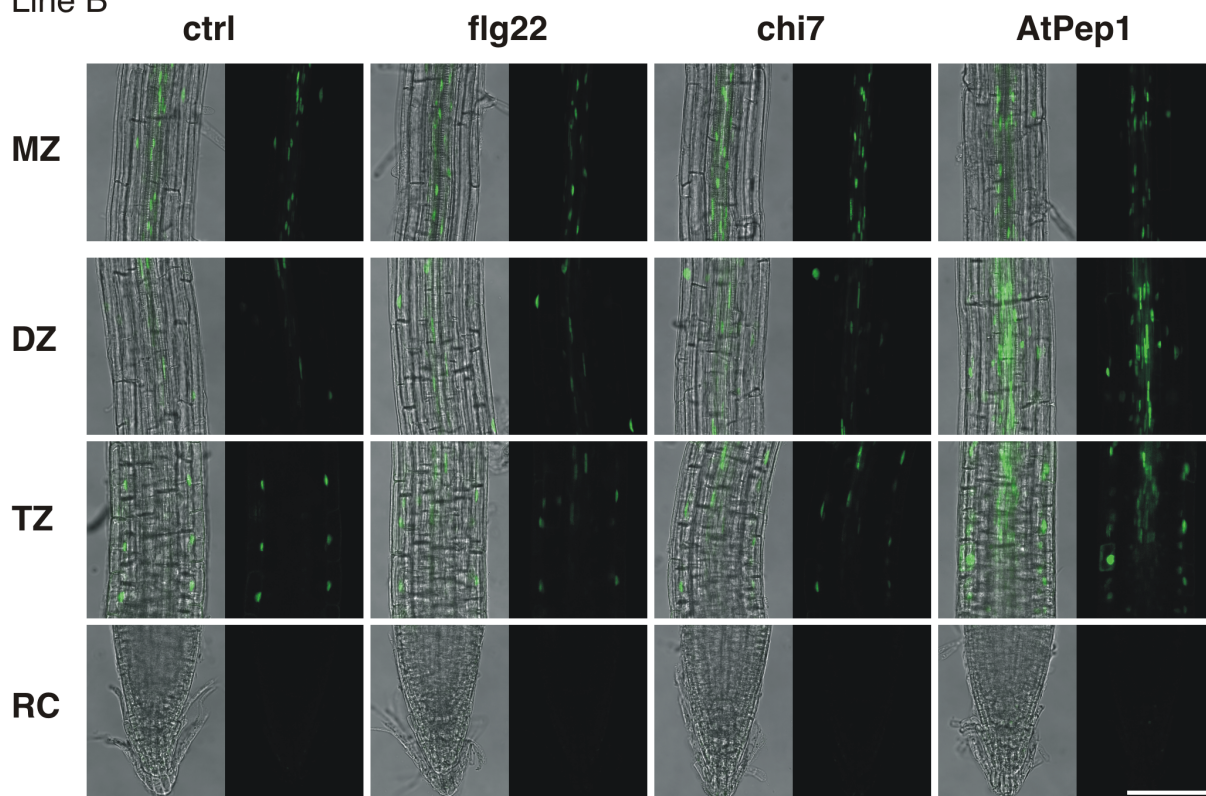
(c1)

pACS6::YFP_N

Line A



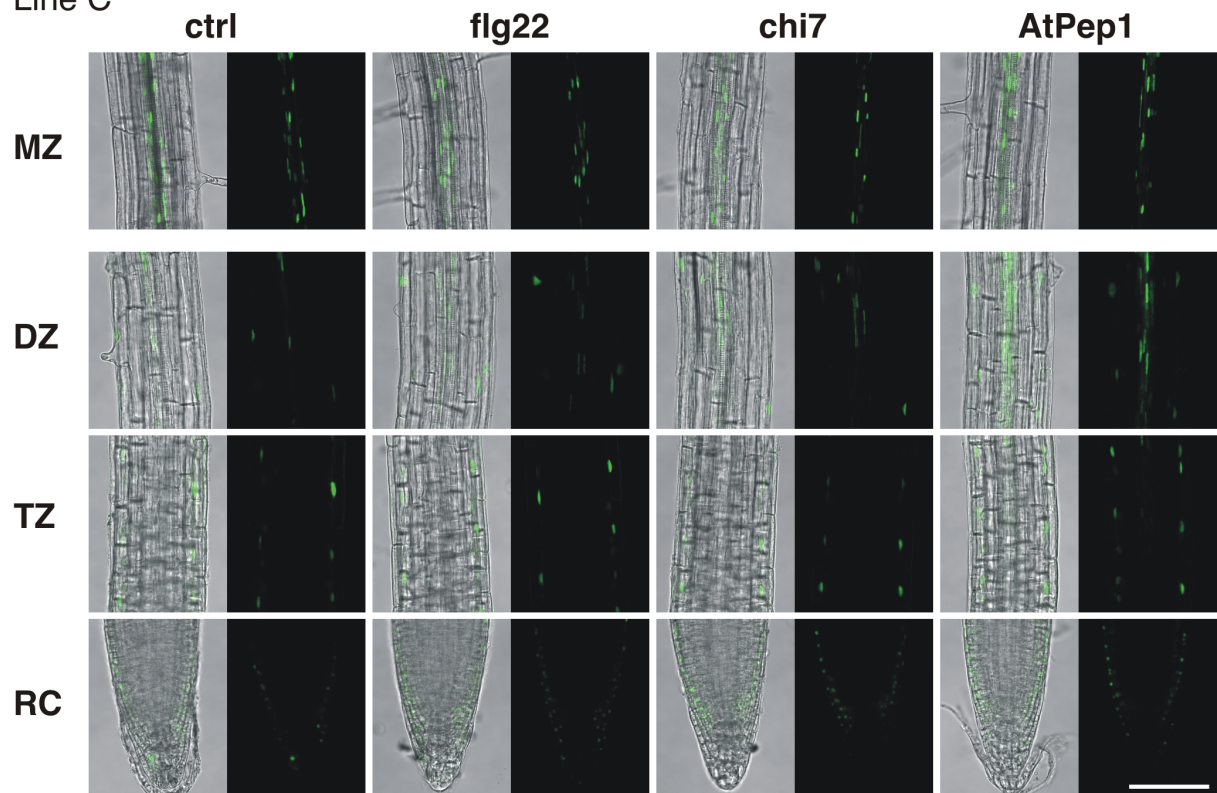
Line B



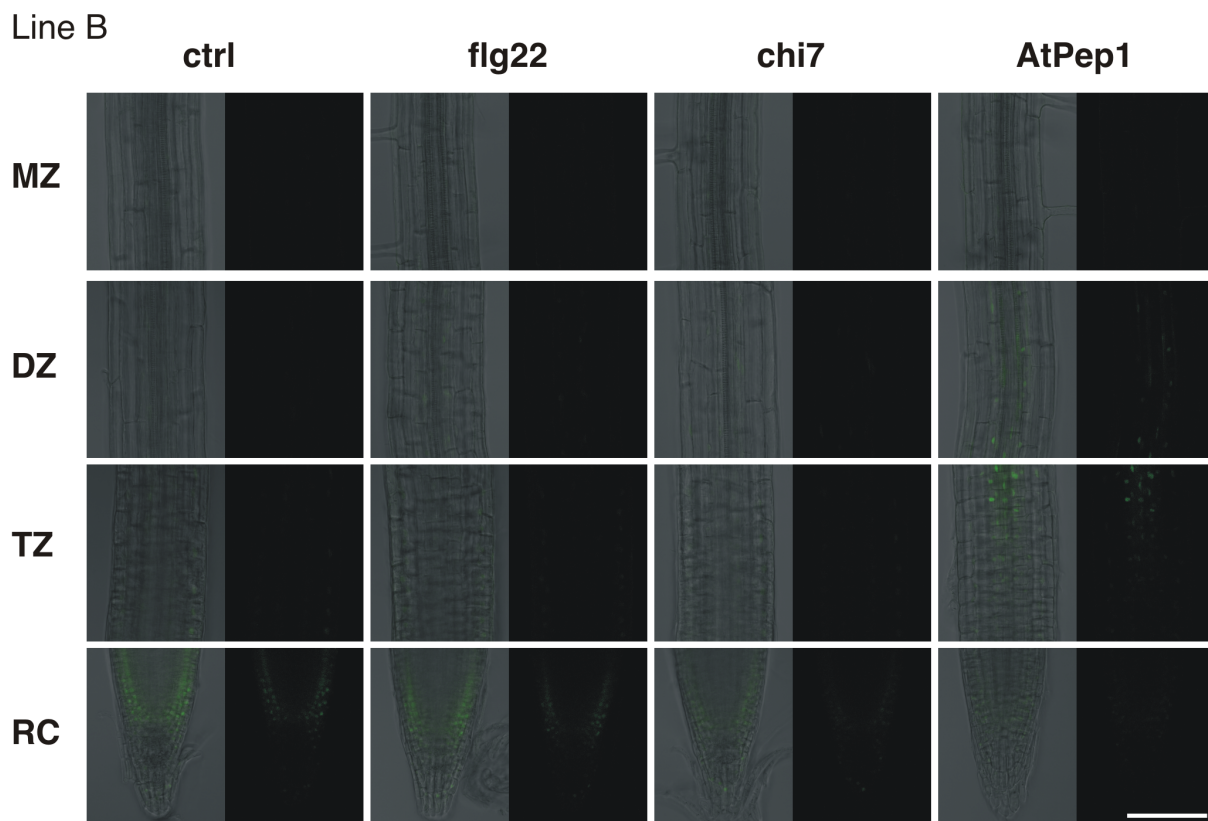
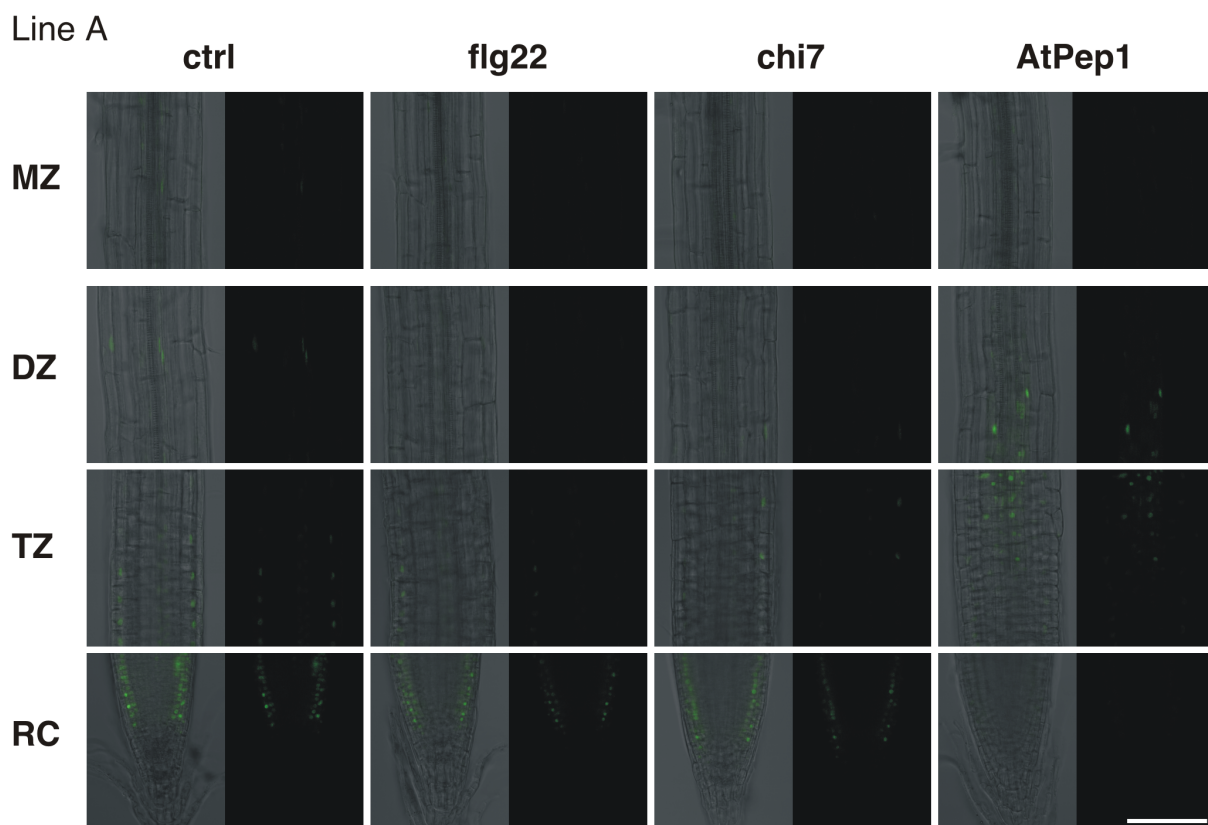
(c2)

pACS6::YFP_N

Line C



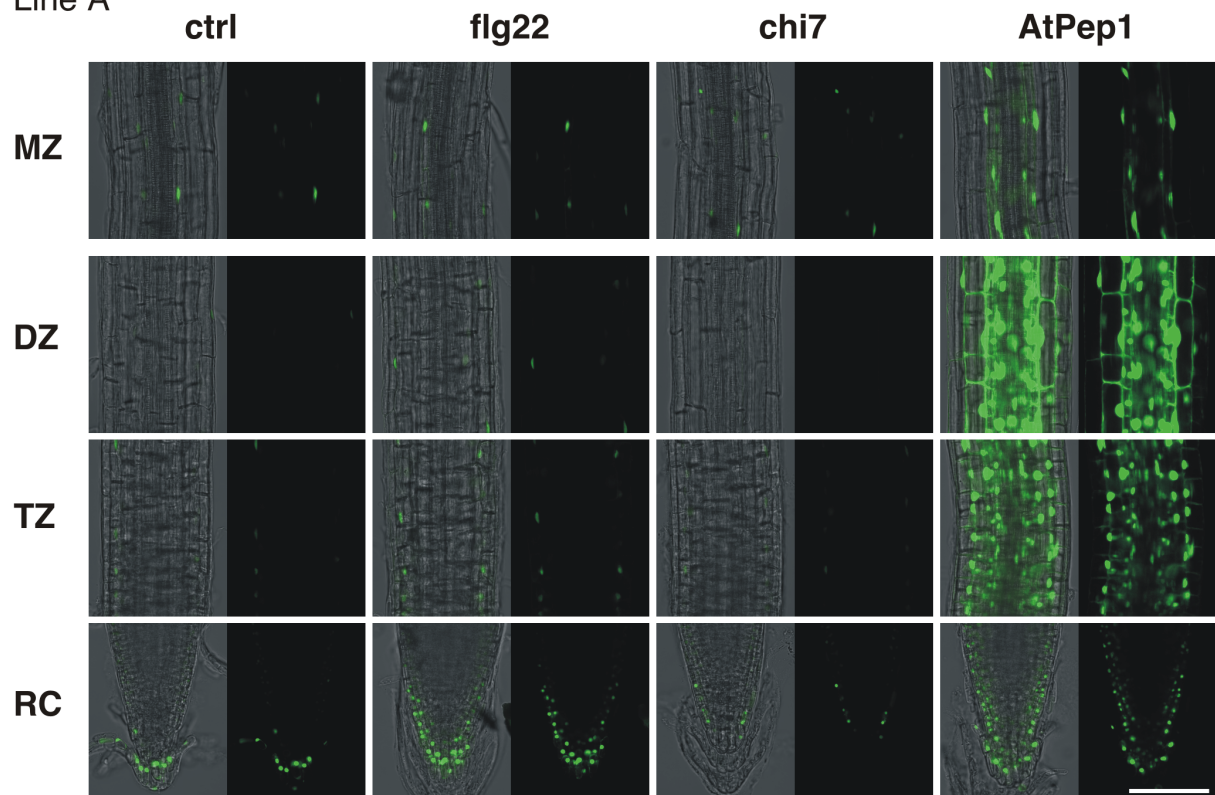
(d) *pAOS::YFP_N*



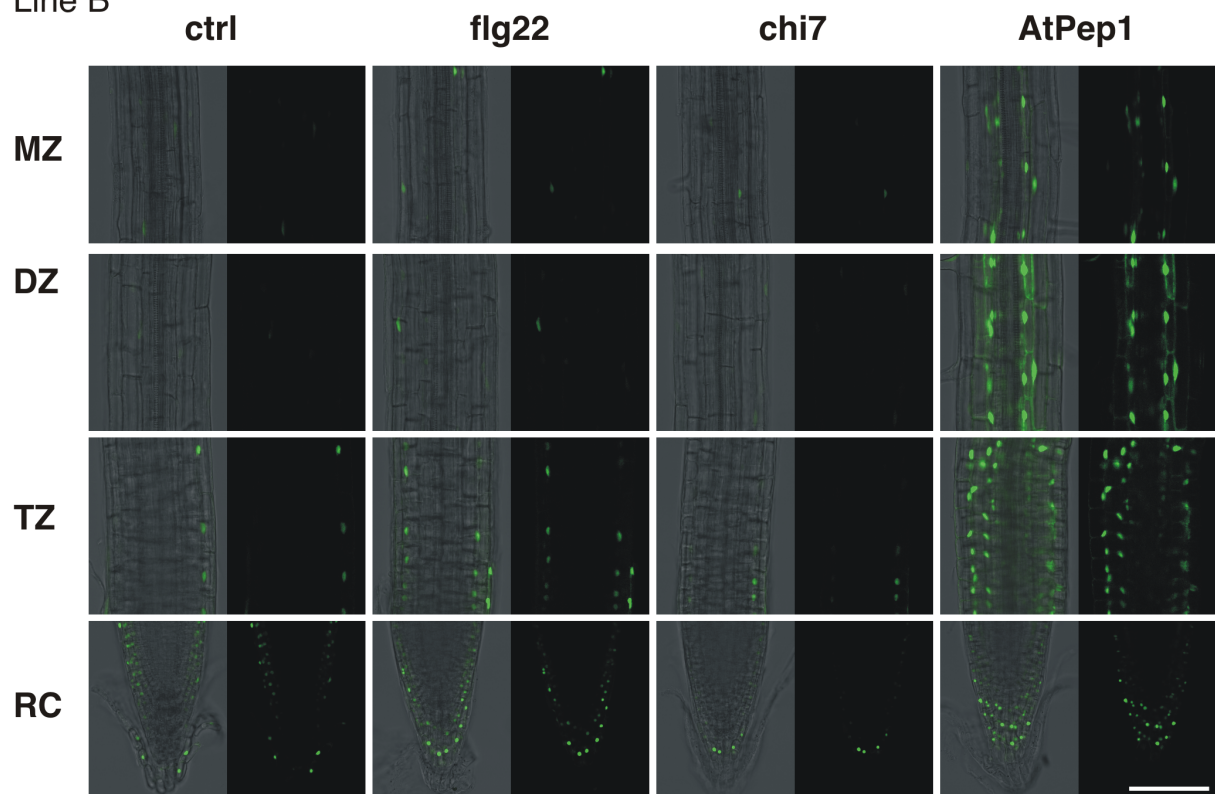
(e1)

pHEL::YFP_N

Line A



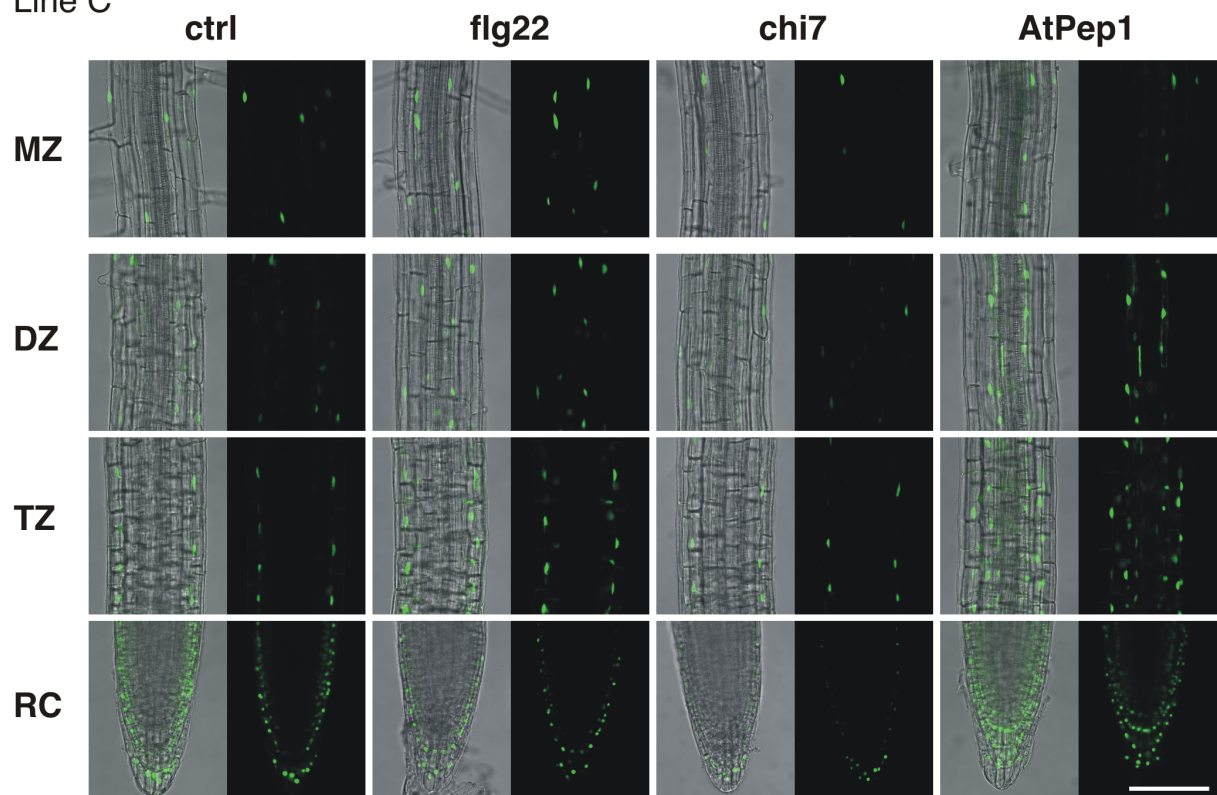
Line B



(e2)

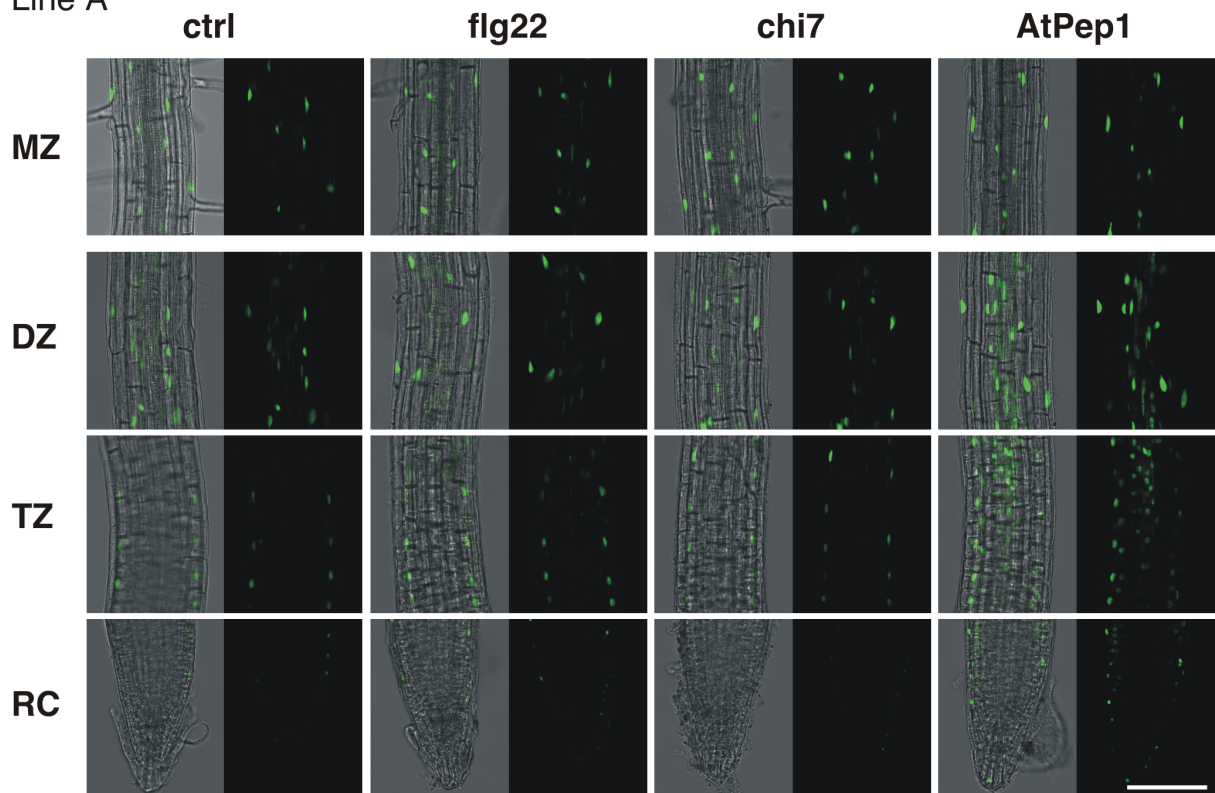
pHEL::YFP_N

Line C

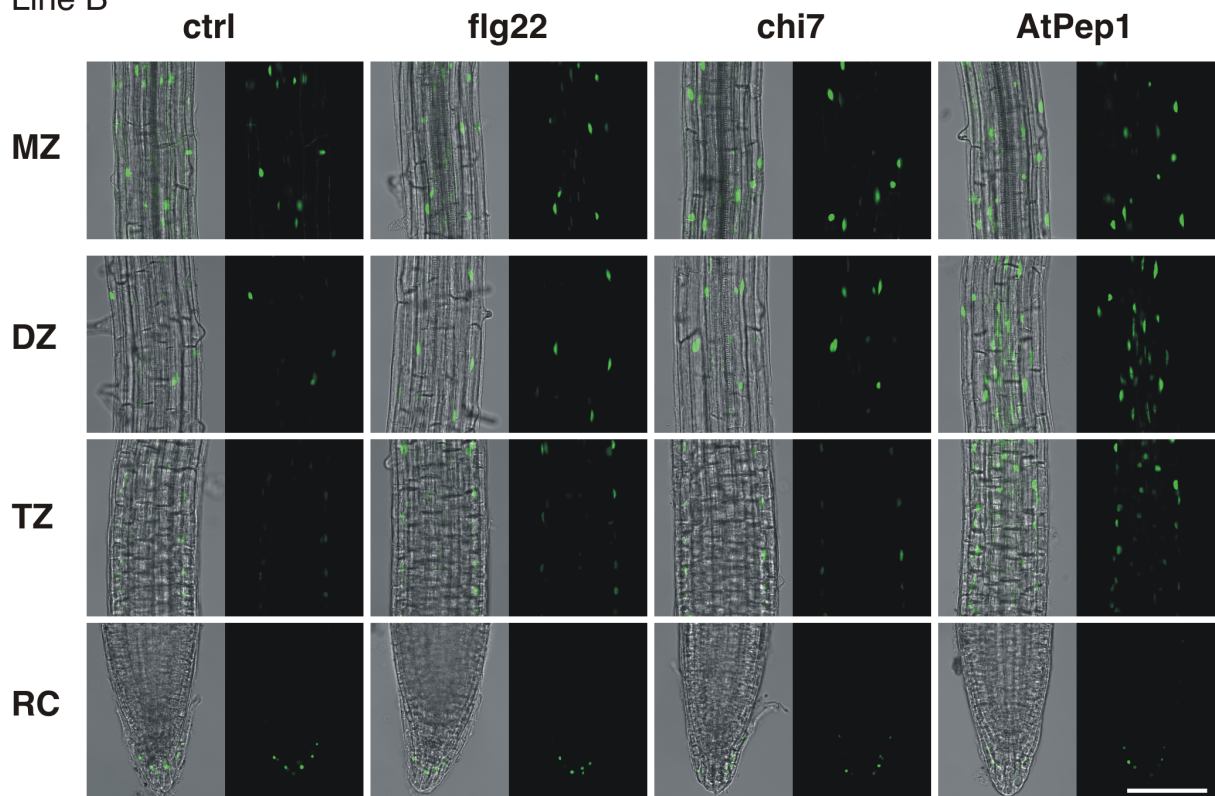


(f) *pZAT12::YFP_N*

Line A

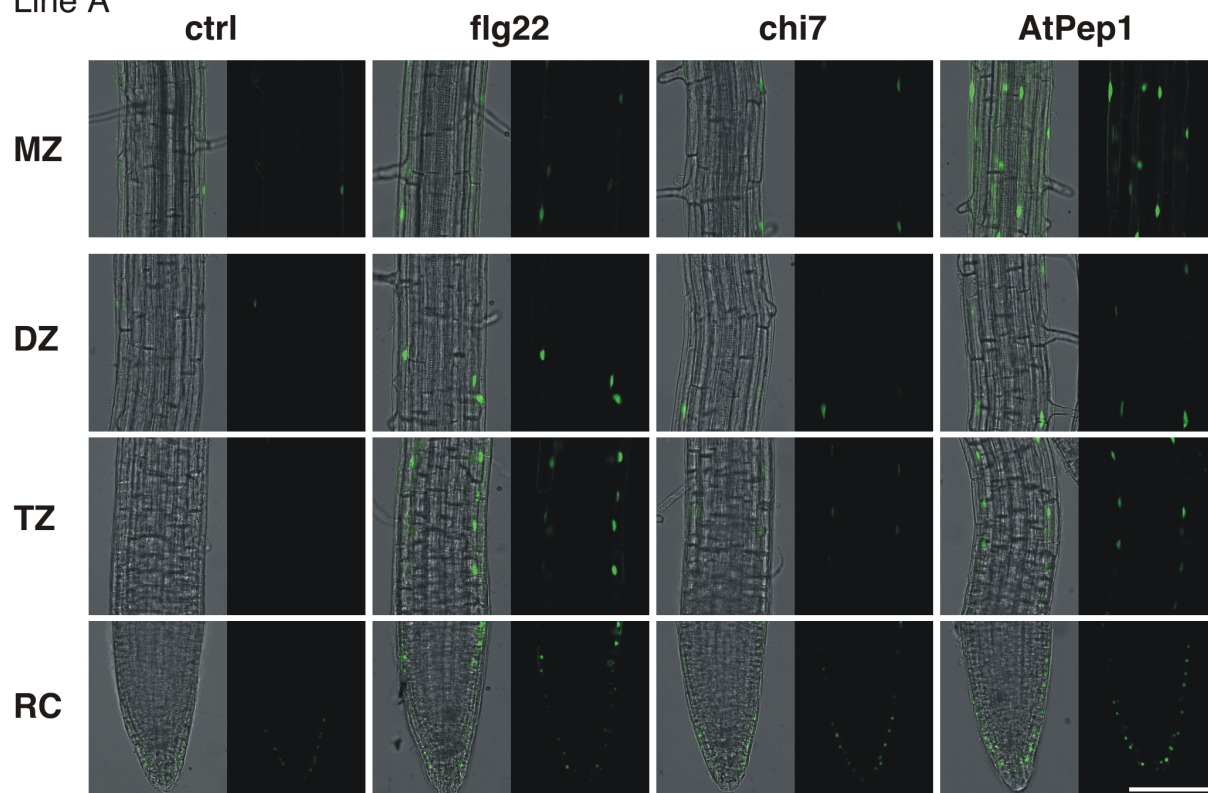


Line B

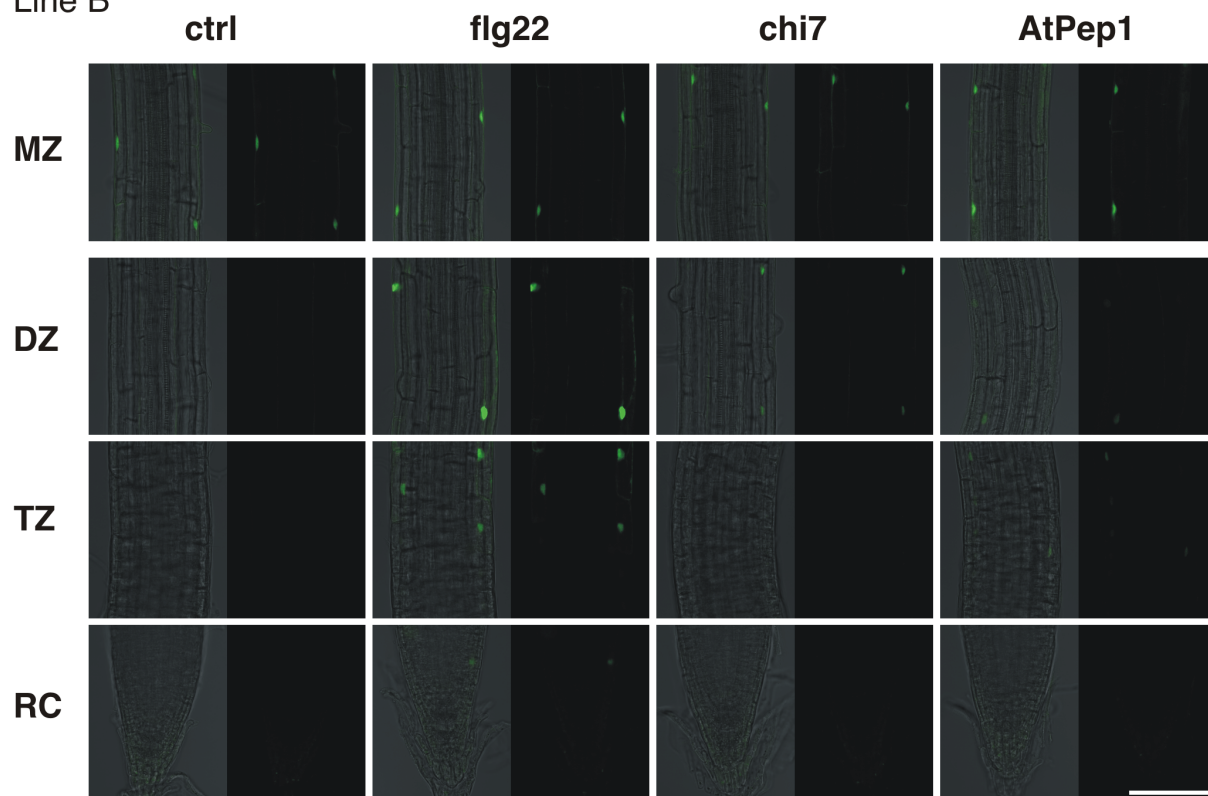


(g) *pPER5::YFP_N*

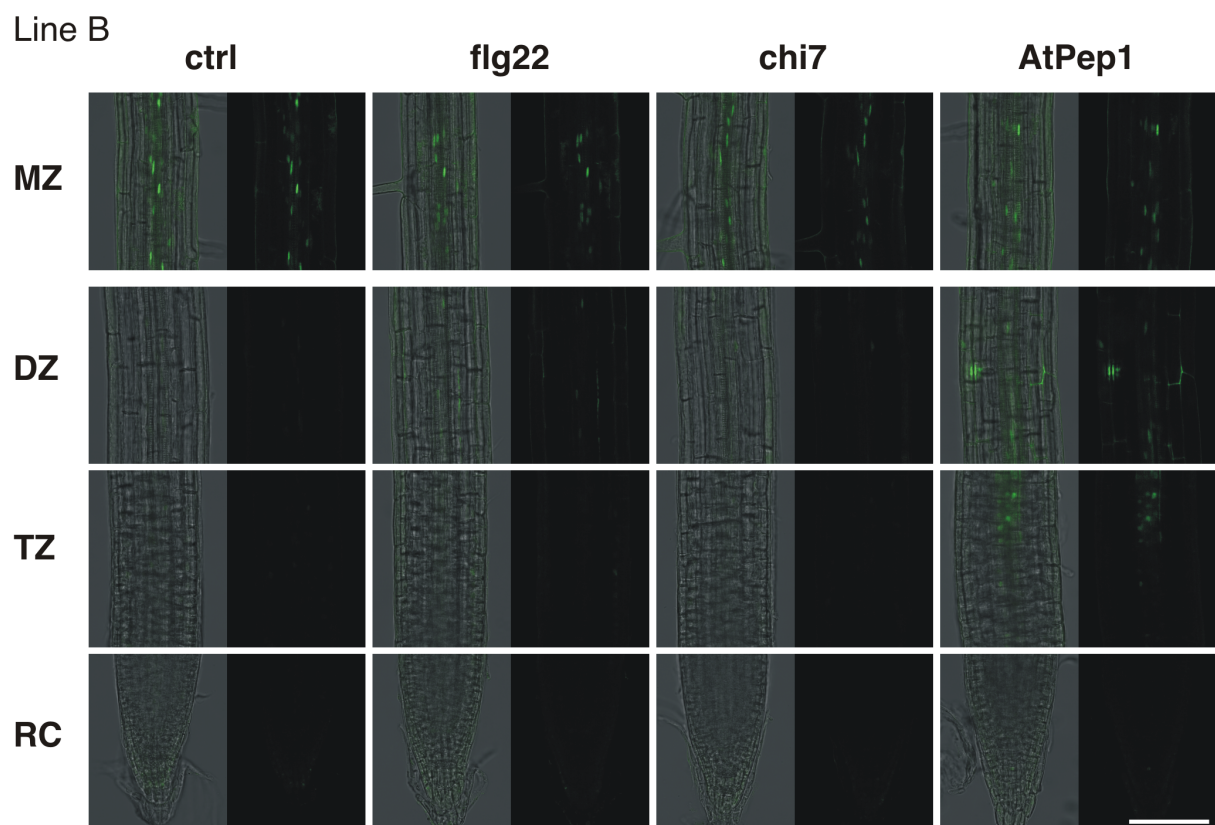
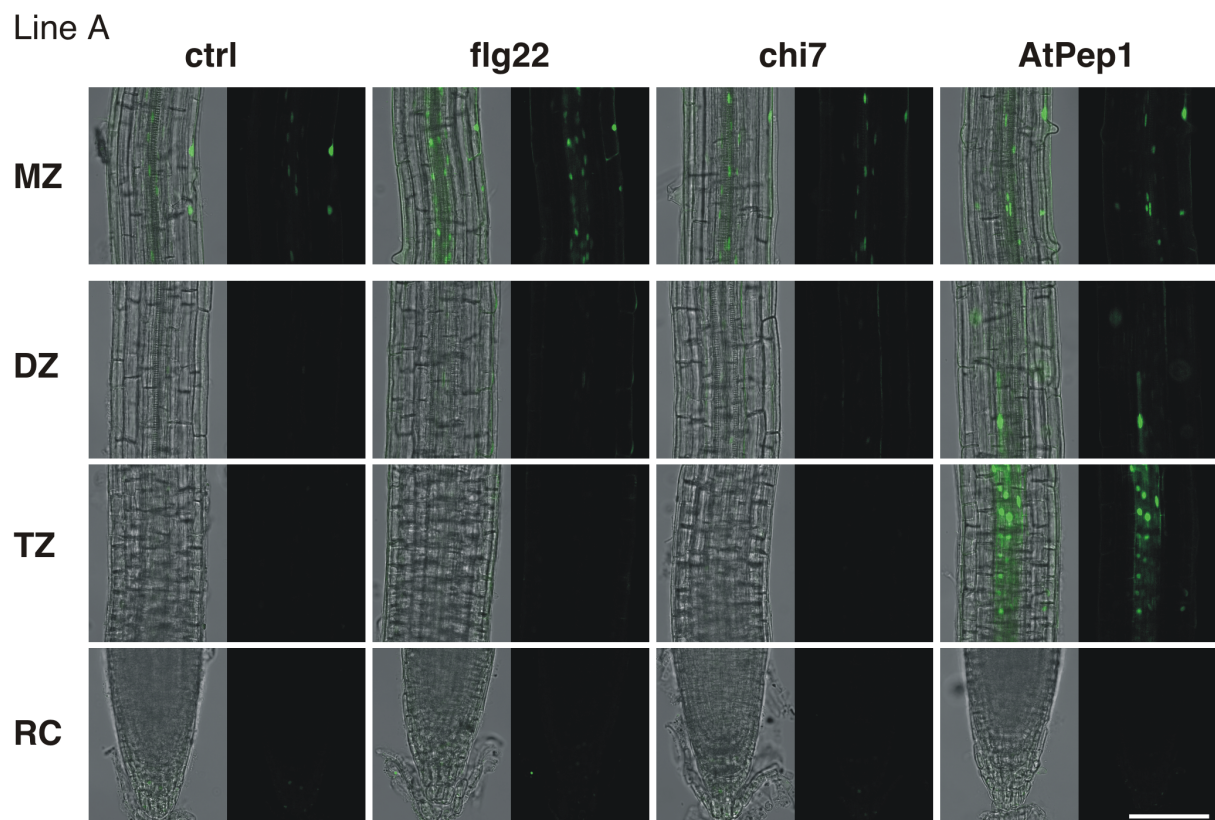
Line A



Line B



(h) *pICS1::YFP_N*



(i) *pPR1::YFP_N*

