

Supplementary Information

Immune Response of A Novel ATR-AP205-001 Conjugate

Anti-hypertensive Vaccine

Xiajun Hu^{1,2,3,*}, Yihuan Deng^{1,2,3,*}, Xiao Chen^{1,2,3,*}, Yanzhao Zhou^{1,2,3}, Hongrong Zhang^{1,2,3}, Hailang Wu^{1,2,3}, Shijun Yang^{1,2,3}, Fen Chen^{1,2,3}, Zihua Zhou^{1,2,3}, Min Wang^{1,2,3}, Zhihua Qiu^{1,2,3}, Yuhua Liao^{1,2,3}

¹Department of Cardiology, Union Hospital, Tongji Medical College, Huazhong University of Science and Technology, Wuhan 430022, China. ²Institute of Cardiology, Union Hospital, Tongji Medical College, Huazhong University of Science and Technology, Wuhan 430022, China. ³Key Lab of Molecular Biological Targeted Therapies of the Ministry of Education, Union Hospital, Tongji Medical College, Huazhong University of Science and Technology, Wuhan 430022, China.

*These authors contributed equally to this work.

Correspondence should be addressed to Y.L. (liaoyh27@163.com) and Z.Q. (qiu_zhихua512@163.com)

Supplementary Figure S1

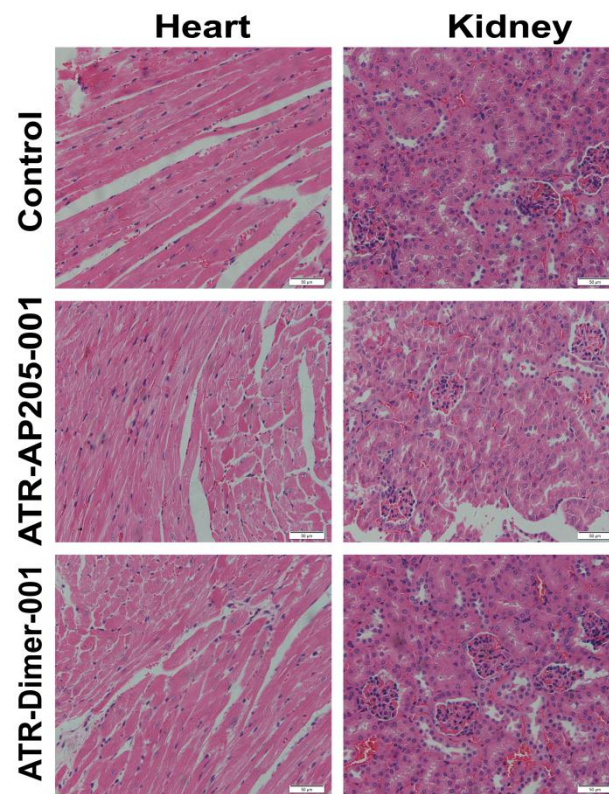


Figure S1. No immunologic damages were observed after ATR-AP205-01 or ATR-Dimer-001 vaccination. H&E staining of heart and kidney from mice after 5 times vaccination (n=6 per group). Scale bars, 50 μ m.

Supplementary Figure S2

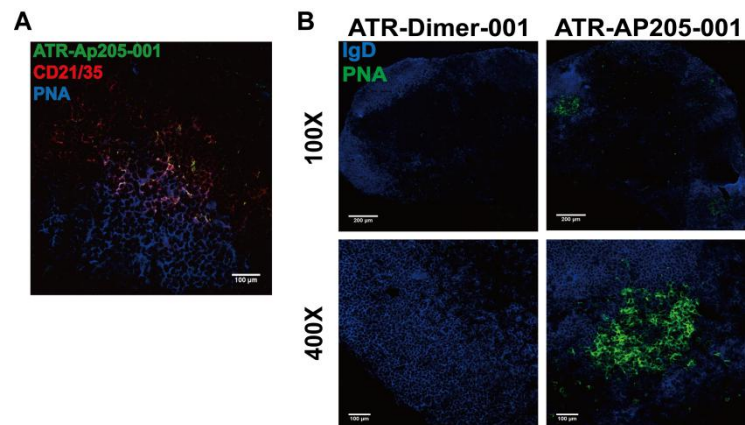


Figure S2. Early GC formation 4 days after ATR-AP205-001 vaccination. (A) Colocalization of GC (blue) and FDCs (red) presenting ATR-AP205-001 (green). Scale bars, 200μm. (B) GC staining 4 days after ATR-Dimer-001 or ATR-AP205-001 vaccination. 100X, Scale bars, 200μm. 400X, Scale bars, 100μm.

Supplementary Figure S3

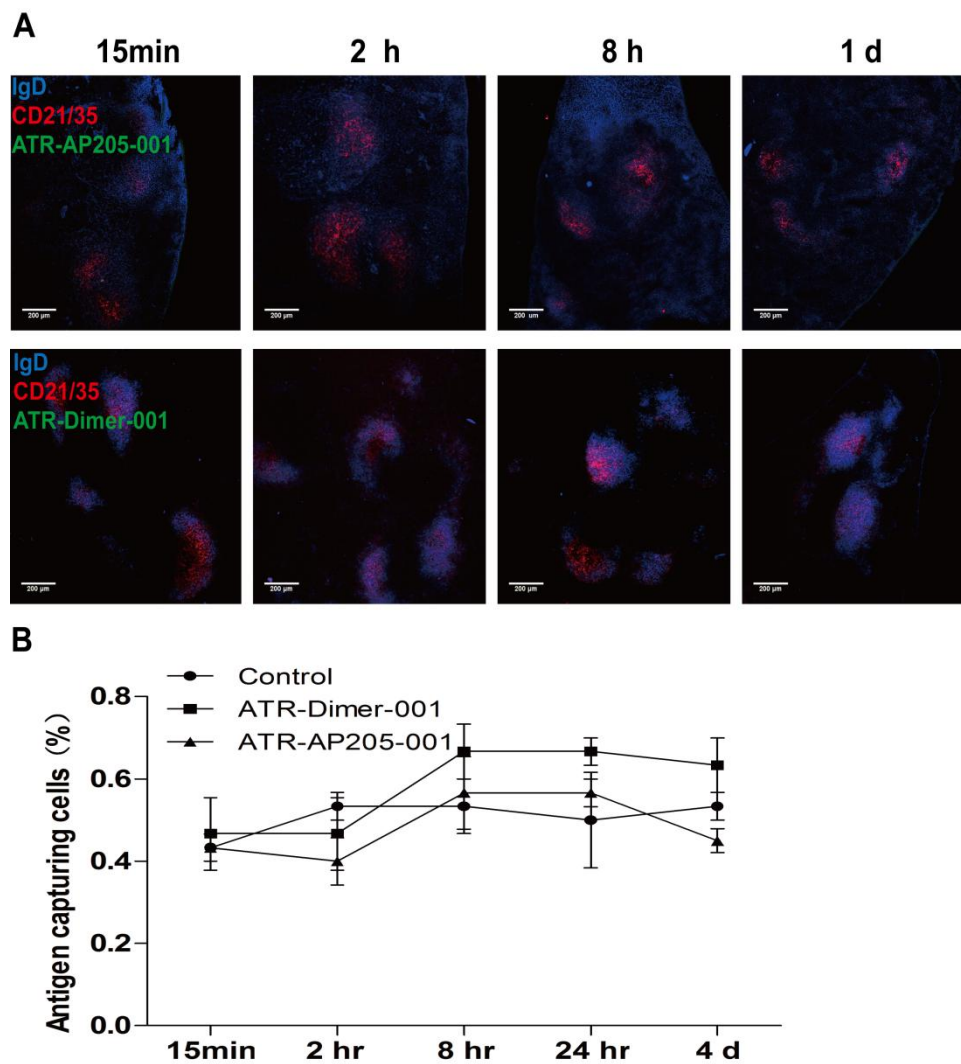


Figure S3. No fluorescent ATR-AP205-001 or ATR-Dimer-001 were observed in spleen. (A) Fluorescent images of spleen after immunization (n=6 per group). Scale bars, 200 μ m. (B) Percentages of Antigen-capturing cells in total cells determined by flow cytometry (n=6 per group). Data are presented as mean \pm SEM.

Supplementary Figure S4

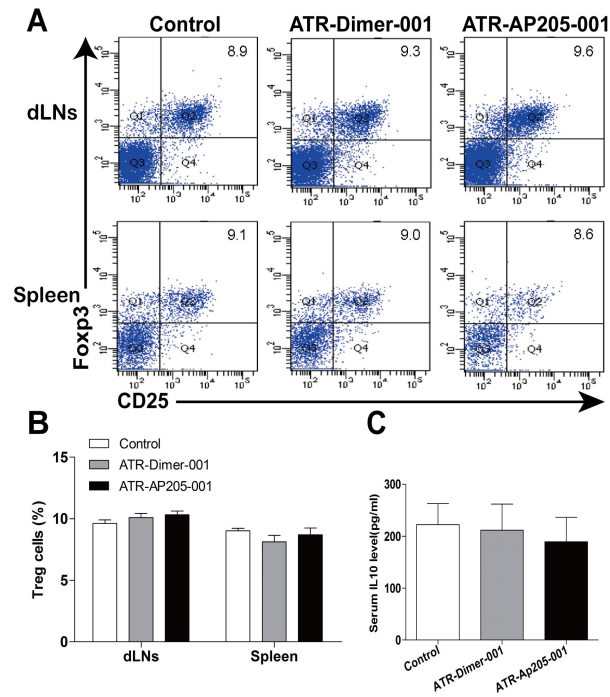


Figure S4. No Treg cells differentiation was observed after multiple vaccination. (A) Treg (CD25⁺Foxp3⁺) gated on CD4⁺ T cells. (B) Percentages of Treg cells in CD4⁺ T cells after 5 times immunization (n=7 per group). (C) Serum IL10 concentration (n=7 per group). Data are presented as mean \pm SEM.

Supplementary Figure S5

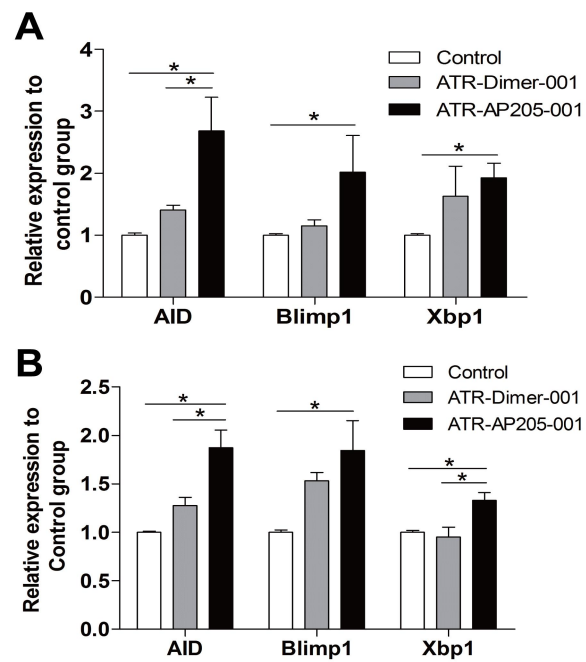


Figure S5. Relative mRNA expression of AID, Blimp1 and Xbp1 in dLNs and spleen on day 14 (n=7 per group). Data are presented as mean \pm SEM. *P < 0.05.

Supplementary Figure S6

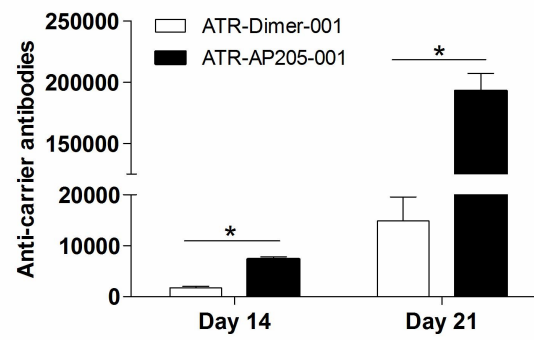


Figure S6. Antibody titers against the carriers in ATR-Dimer-001 or ATR-AP205-001 group. Data are presented as mean \pm SEM. *P < 0.05 vs ATR-Dimer-001 group.

Supplementary Figure S7

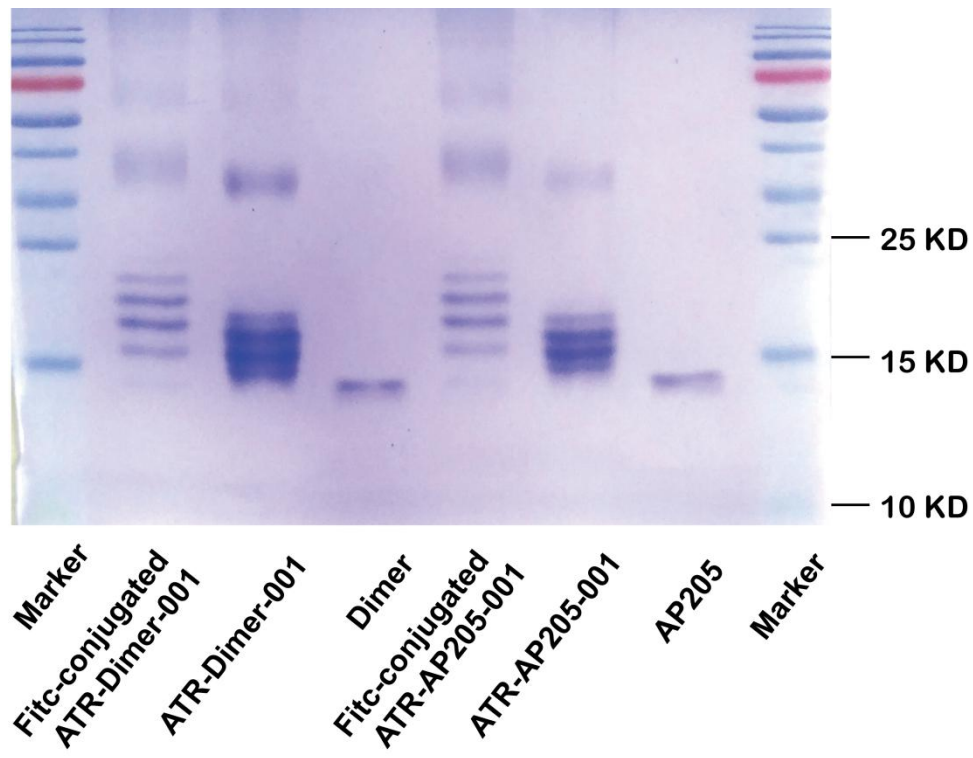


Figure S7. SDS-PAGE analysis of carriers and vaccines by eluting gel stained with coomassie brilliant blue.