

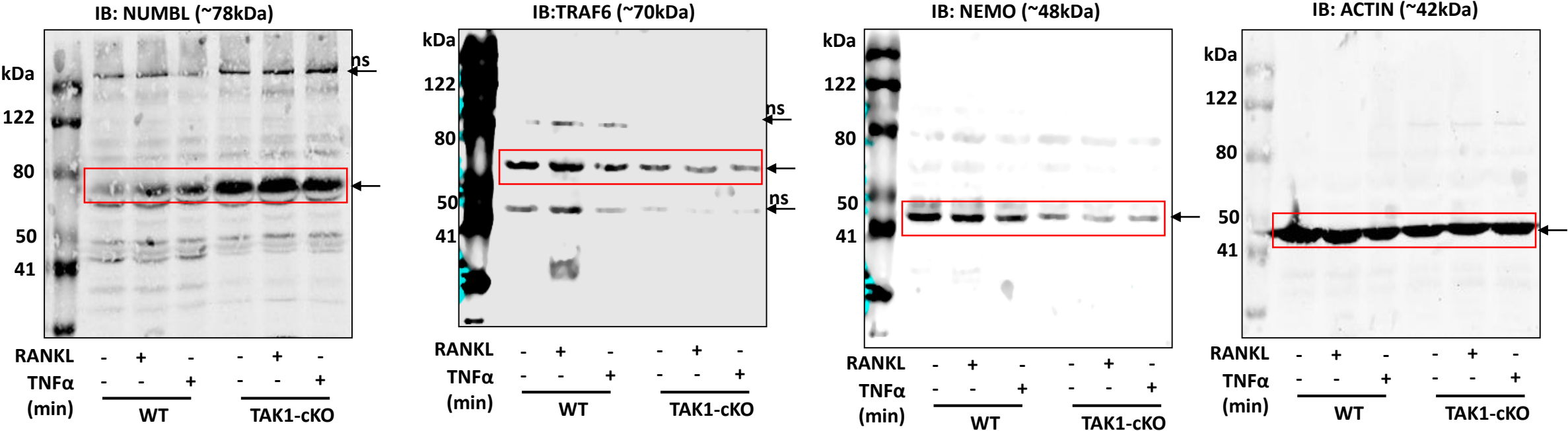
NUMBL Interacts with TAK1, TRAF6 and NEMO to Negatively Regulate NF- κ B Signaling During Osteoclastogenesis

Gaurav Swarnkar¹, Tim Hung-Po Chen¹, Manoj Arra¹, Amjad M Nasir¹, Gabriel Mbalaviele², Yousef Abu-Amer*¹

¹Department of Orthopaedic Surgery and Cell Biology & Physiology, Washington University School of Medicine, St. Louis MO 63110

²Bone and Mineral Division, Department of Medicine, Washington University School of Medicine, St. Louis MO 63110

Figure S.1A



← Expected specific bands
←_{ns} Non-specific bands
□ Cropped bands shown in the main figure

Figure S.1B

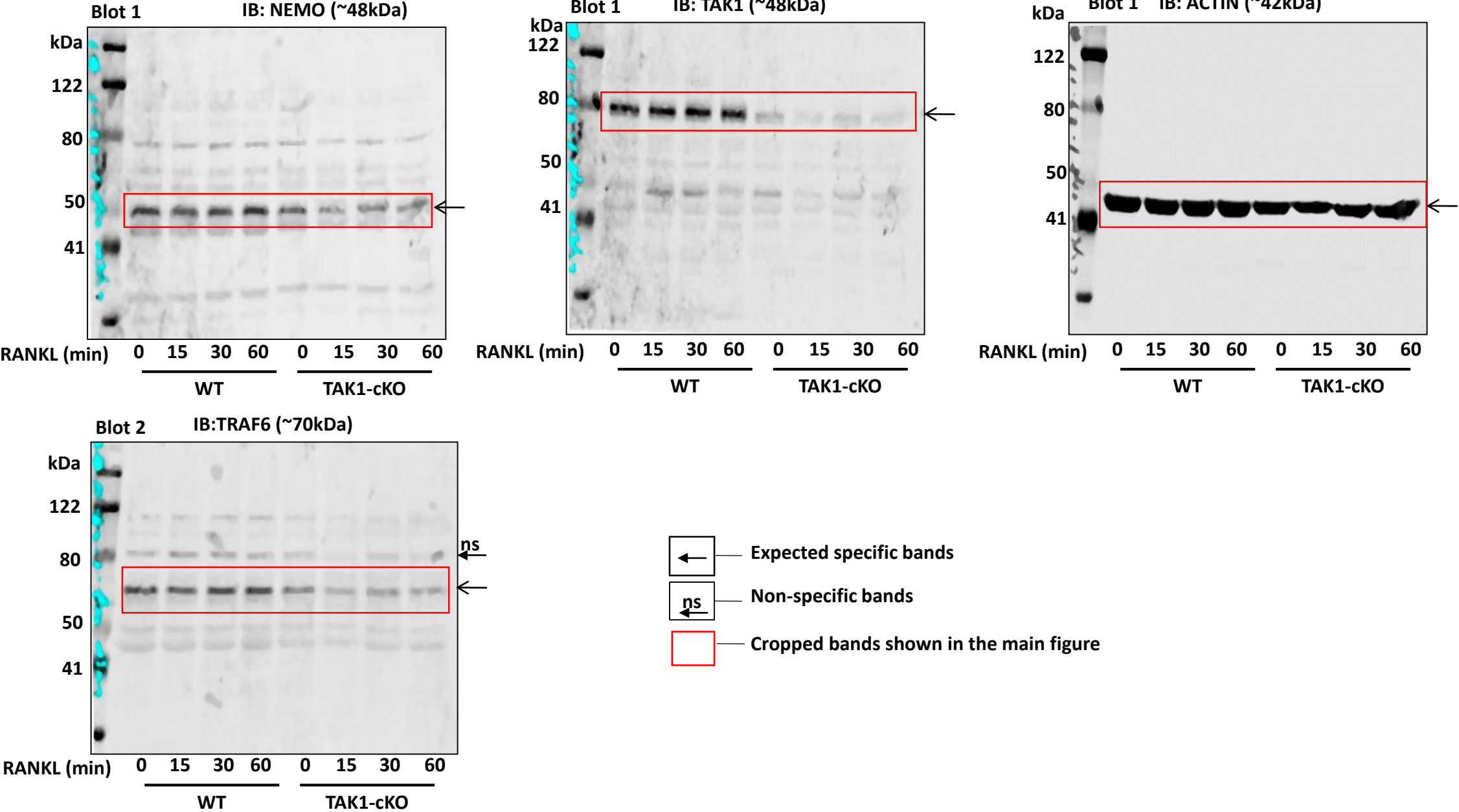
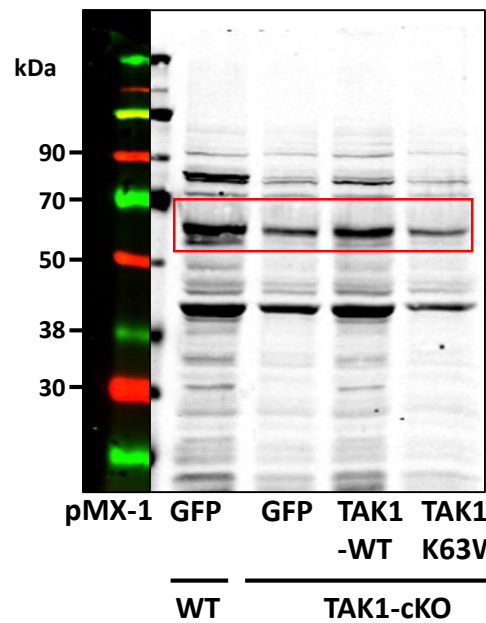
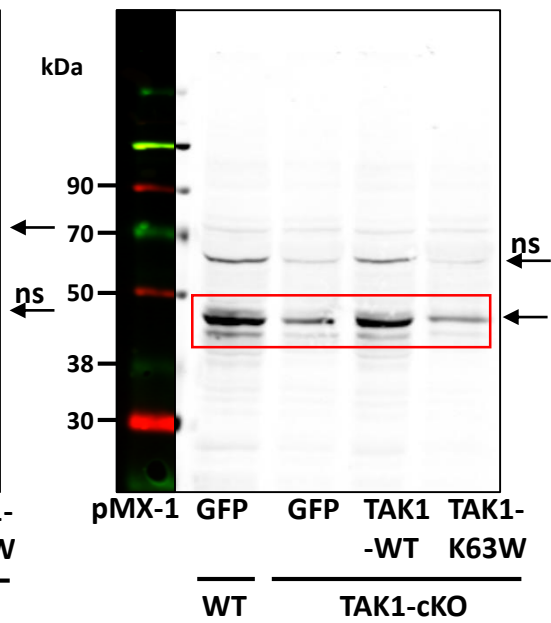


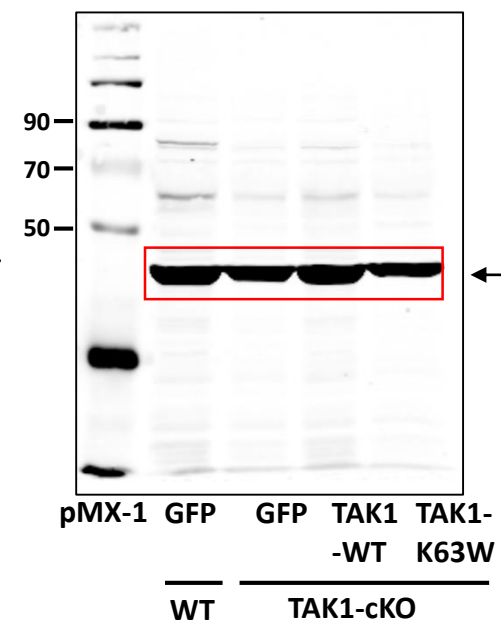
Figure S.1C Blot 1 IB: TRAF6



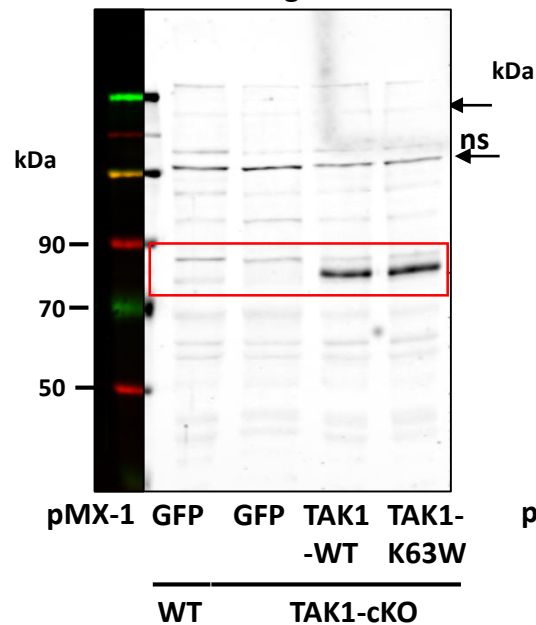
Blot 2 IB: NEMO



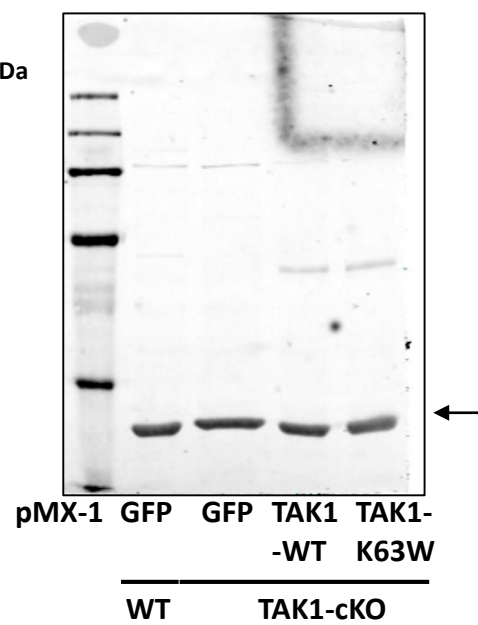
Blot 3 IB: ACTIN



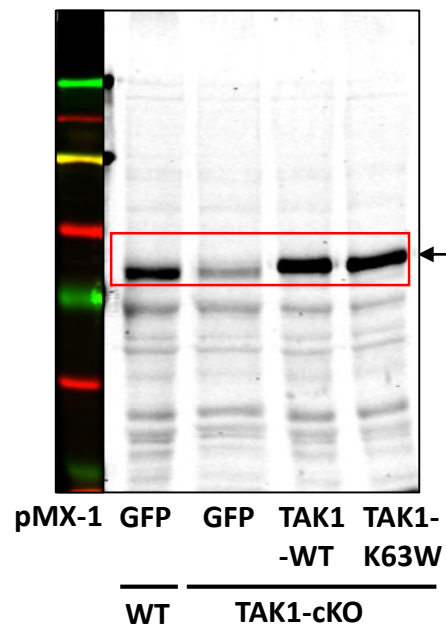
Blot 4 IB: Flag for TAK1



Blot 4 IB: ACTIN



Blot 5 IB: TAK1



Blot 5 IB: ACTIN

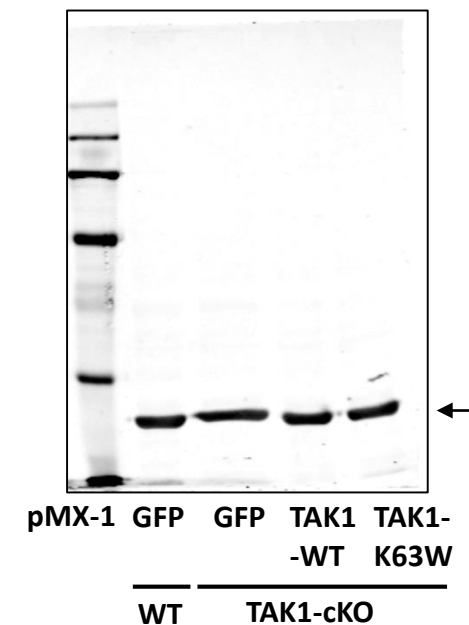
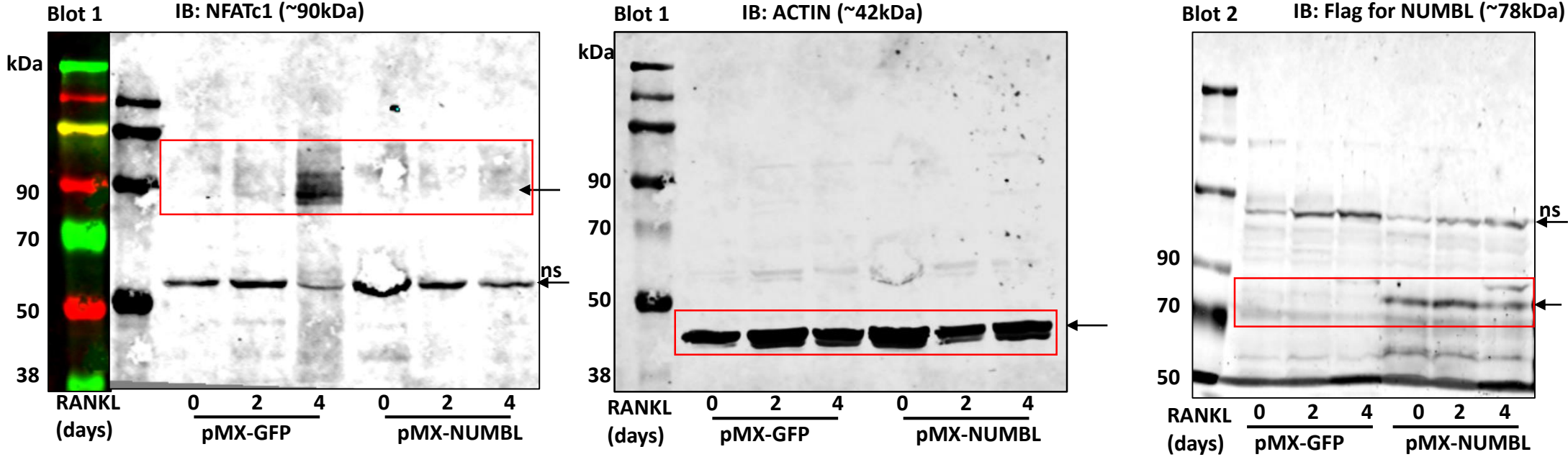
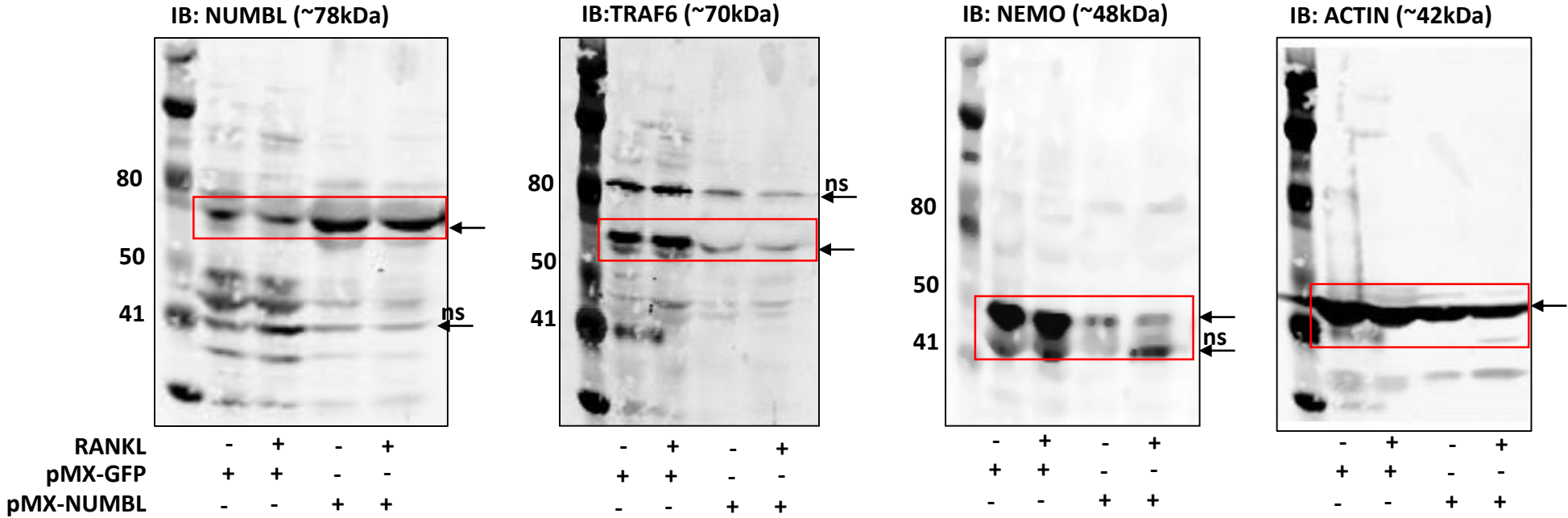


Figure S.2K



← Expected specific bands
ns ← Non-specific bands
Cropped bands shown in the main figure

Figure S.5A



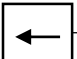
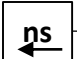

 Expected specific bands
 Non-specific bands
 Cropped bands shown in the main figure

Figure S.5B

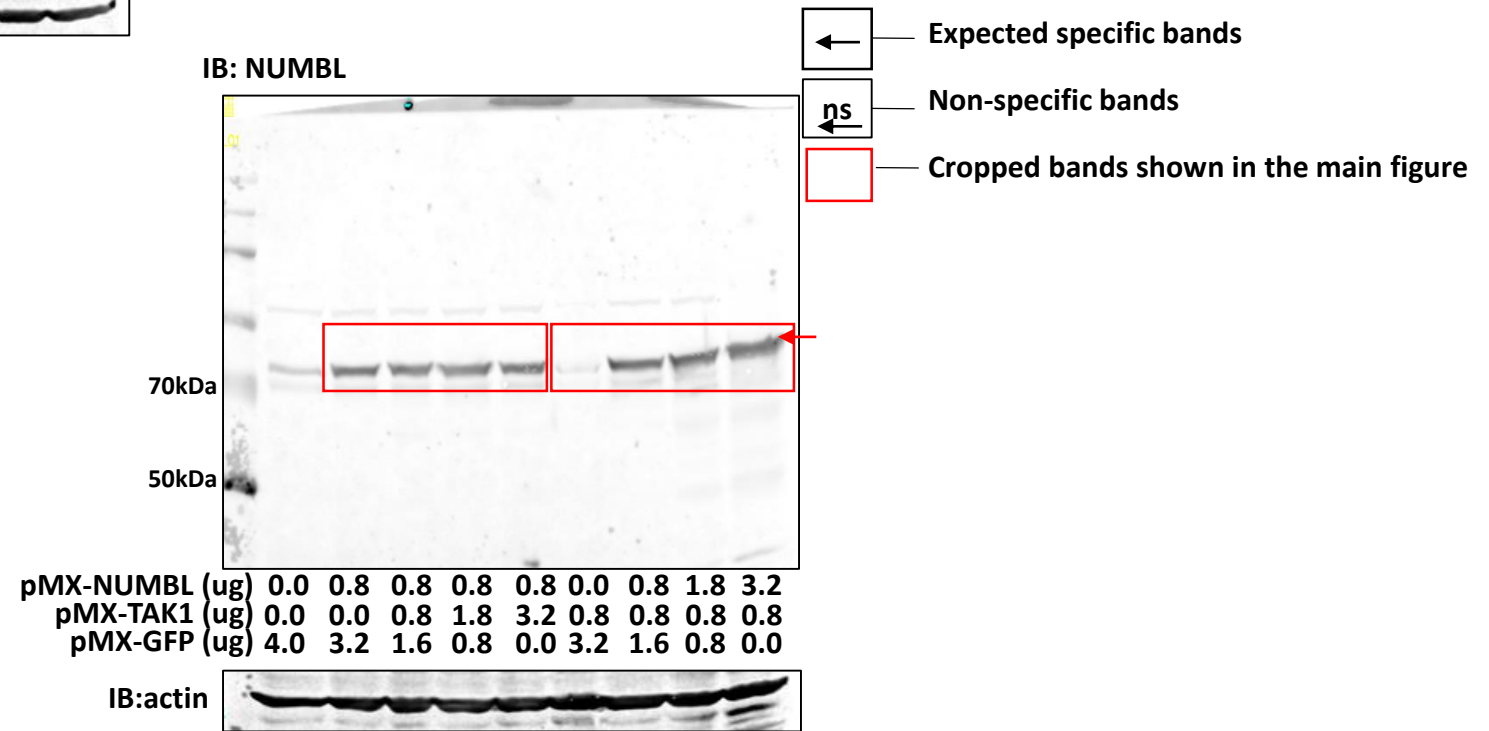
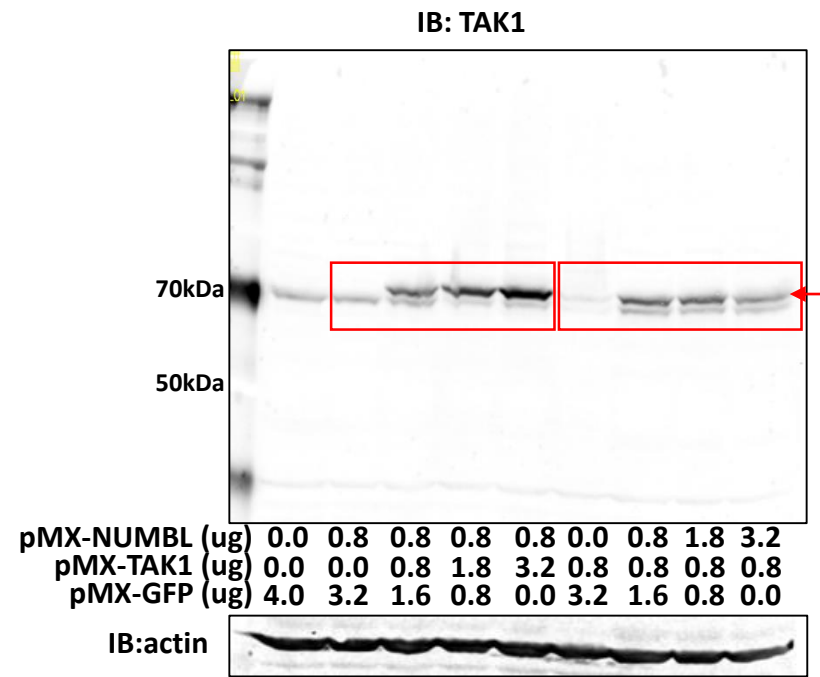
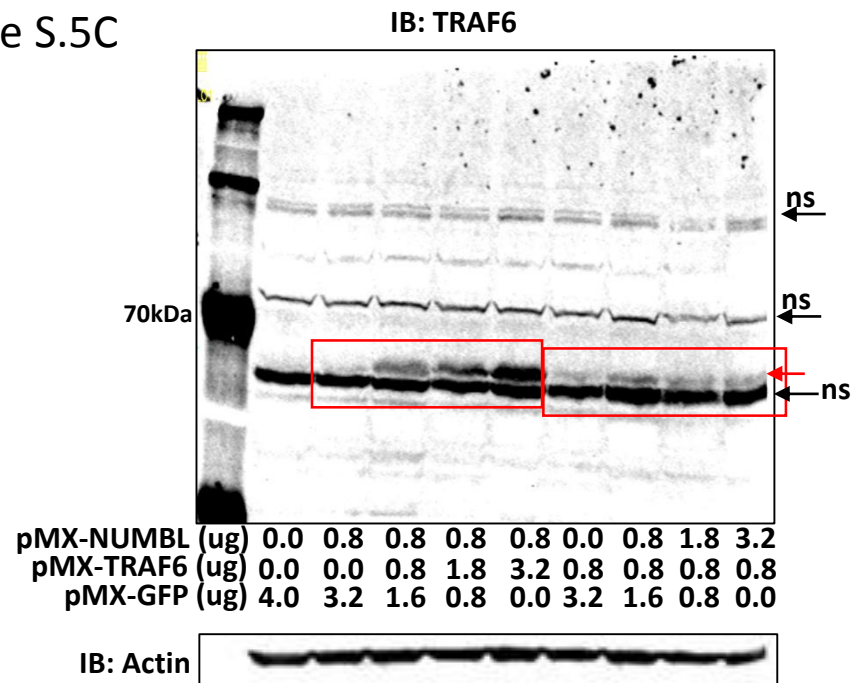
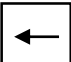
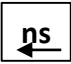



Figure S.5C



-  Expected specific bands
-  Non-specific bands
-  Cropped bands shown in the main figure

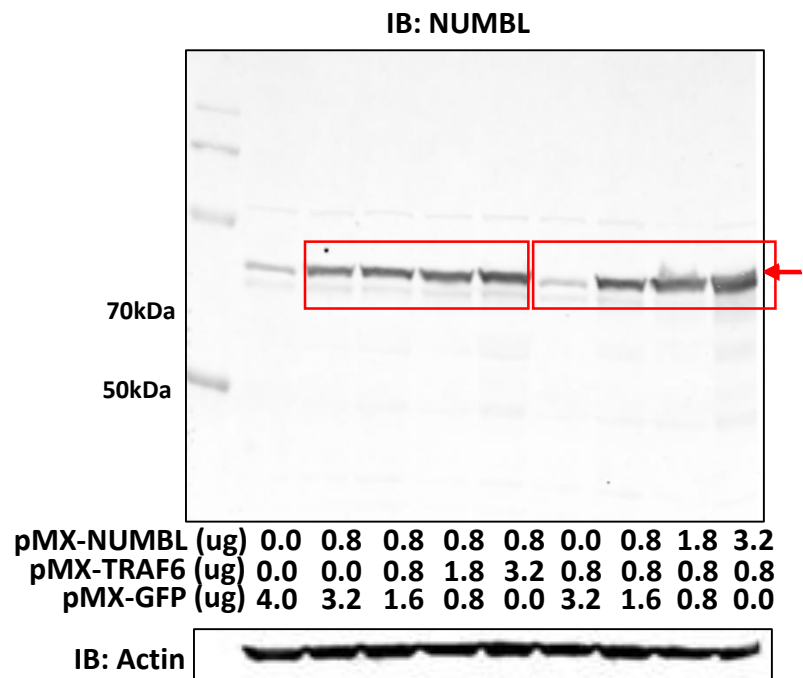
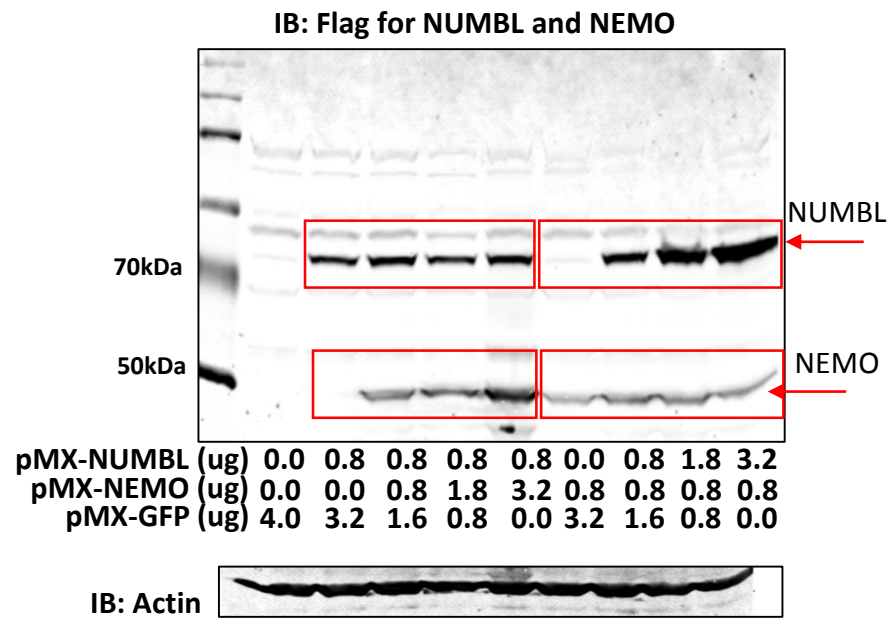


Figure S.5D



Expected specific bands



Non-specific bands



Cropped bands shown in the main figure

Figure S.5E

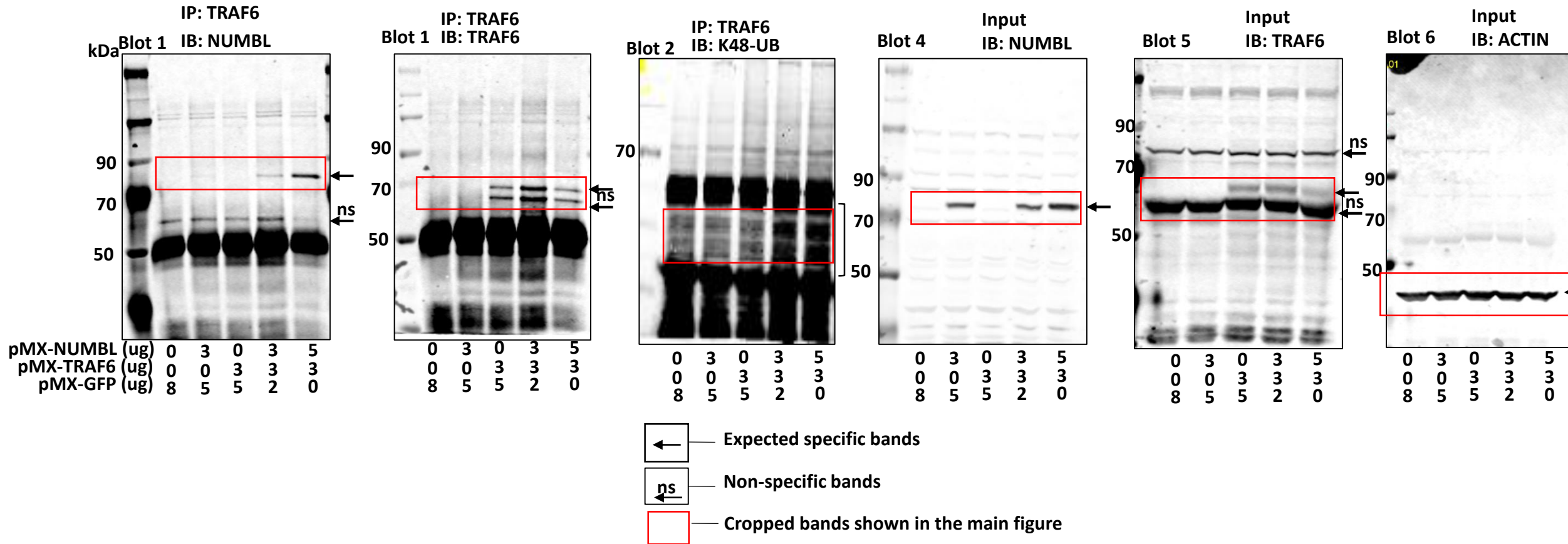
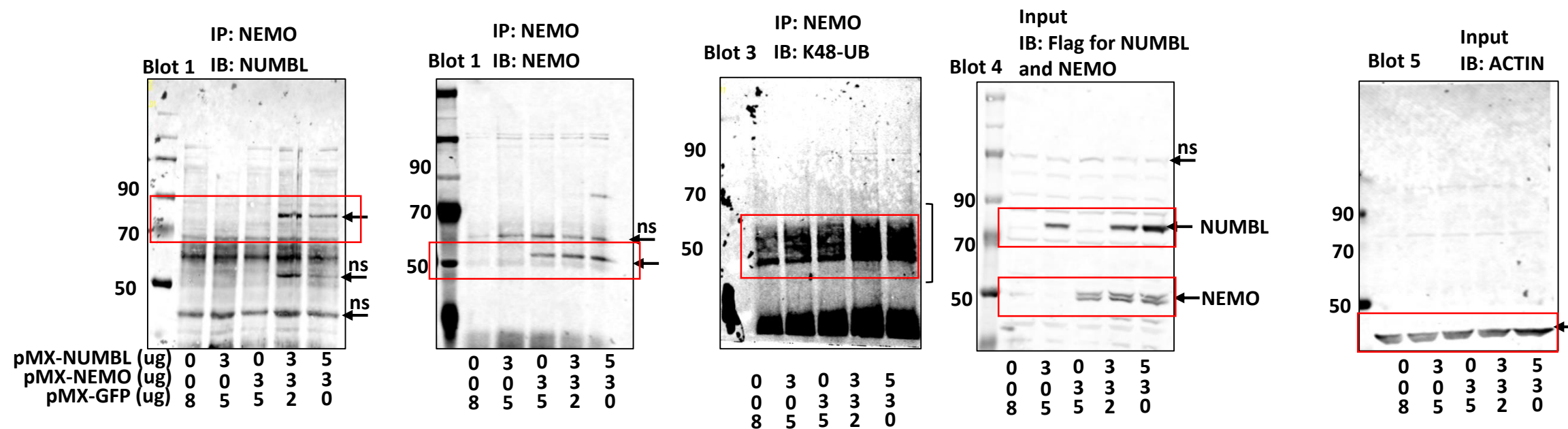
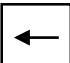
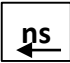



Figure S.5F



Note: For Blot 4 the membrane was blotted using anti-flag which recognizes both NUMBL and NEMO.

-  Expected specific bands
-  Non-specific bands
-  Cropped bands shown in the main figure