

Characterization of the promoter region of the bovine *SIX1* gene: Roles of MyoD, PAX7, CREB and MyoG

Da-wei Wei¹, Xue-yao Ma¹, Song-Zhang¹, Jie-yun Hong¹, Lin-sheng Gui^{1,3}, Chu-gang Mei^{1,3}, Hong-fang Guo¹, Li-Wang¹, Yue-Ning¹ & Lin-sen Zan^{1,2,4*}

¹College of Animal Science and Technology, Northwest A&F University, Yangling 712100 Shaanxi, People's Republic of China. ²National Beef Cattle Improvement Center, Northwest A&F University, Yangling 712100 Shaanxi, People's Republic of China. ³Modern Cattle Biotechnology and Application of National-Local Engineering Research Center, Yangling 712100 Shaanxi, People's Republic of China. ⁴Shaanxi Beef Cattle Engineering Research Center, Yangling 712100 Shaanxi, People's Republic of China.

Correspondence and requests for materials should be addressed to L.-S.Z. (email: zanlinsen@163.com). Tel.: +86-29-8709-1923; Fax: +86-29-8709-2164.

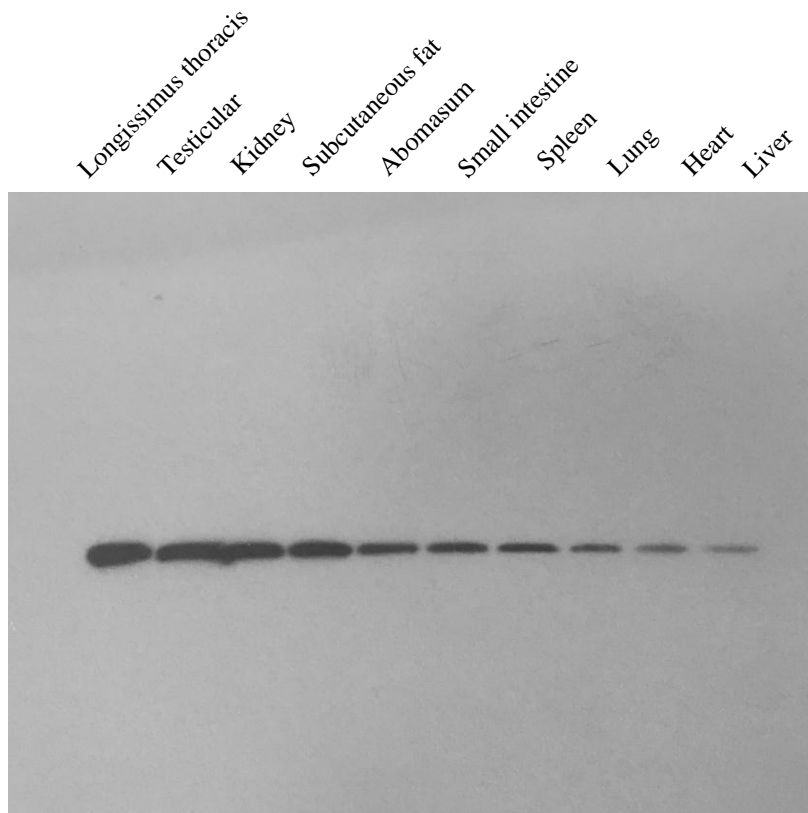
SUPPLEMENTARY INFORMATION includes:

Supplementary Figures S1

Supplementary Flies of the Ethic Committee

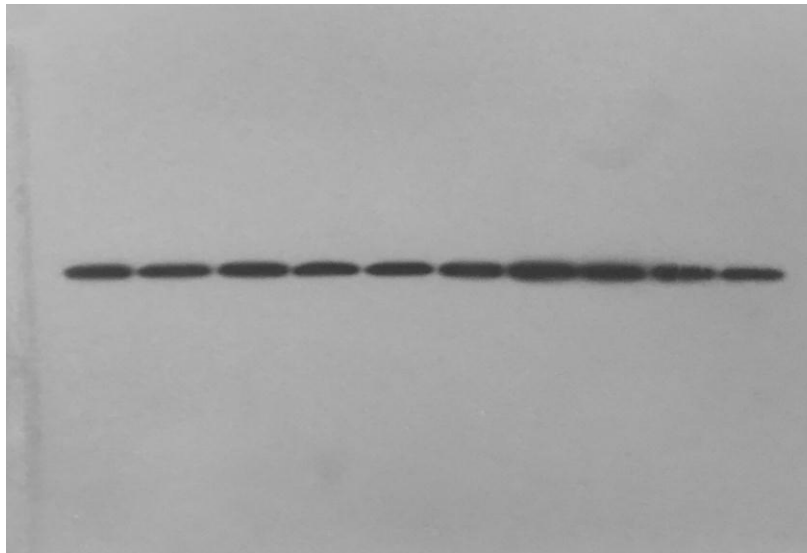
b1.

**Six1
32KD**



b2.

**β -actin
42KD**



Supplementary Figure S1: Western blots showing the different of bovine Six1 expression in tissues and organs and control.