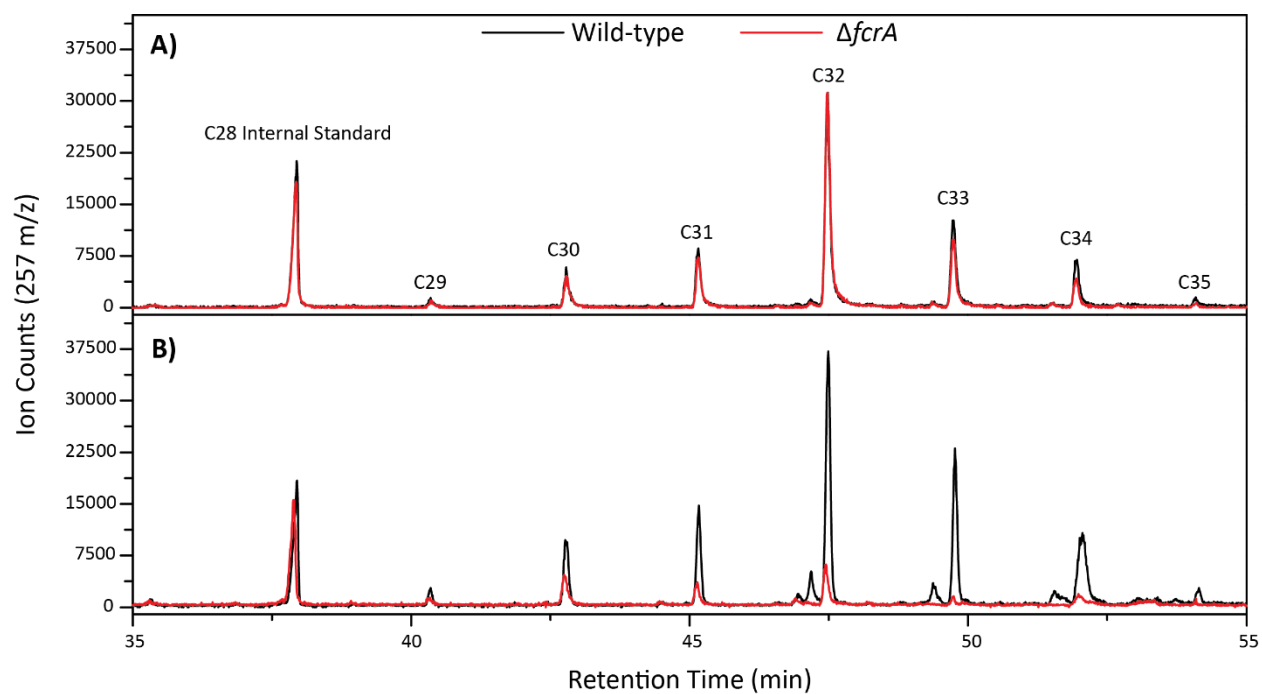


## Supplementary Figures



**Supplementary Figure 1. Comparison of WEs in wild-type RHA1 and  $\Delta fcrA$  mutant.** Neutral lipids were extracted from exponentially growing cells in C<sup>-</sup> conditions (A) without and (B) with SNP treatment, fractionated on silica resin, and examined by GC/MS. The C16 RCOOH<sub>2</sub><sup>+</sup> ion with an  $m/z$  of 257 was used to identify WEs. Similar trends were seen when other RCOOH<sub>2</sub><sup>+</sup> ions were examined.