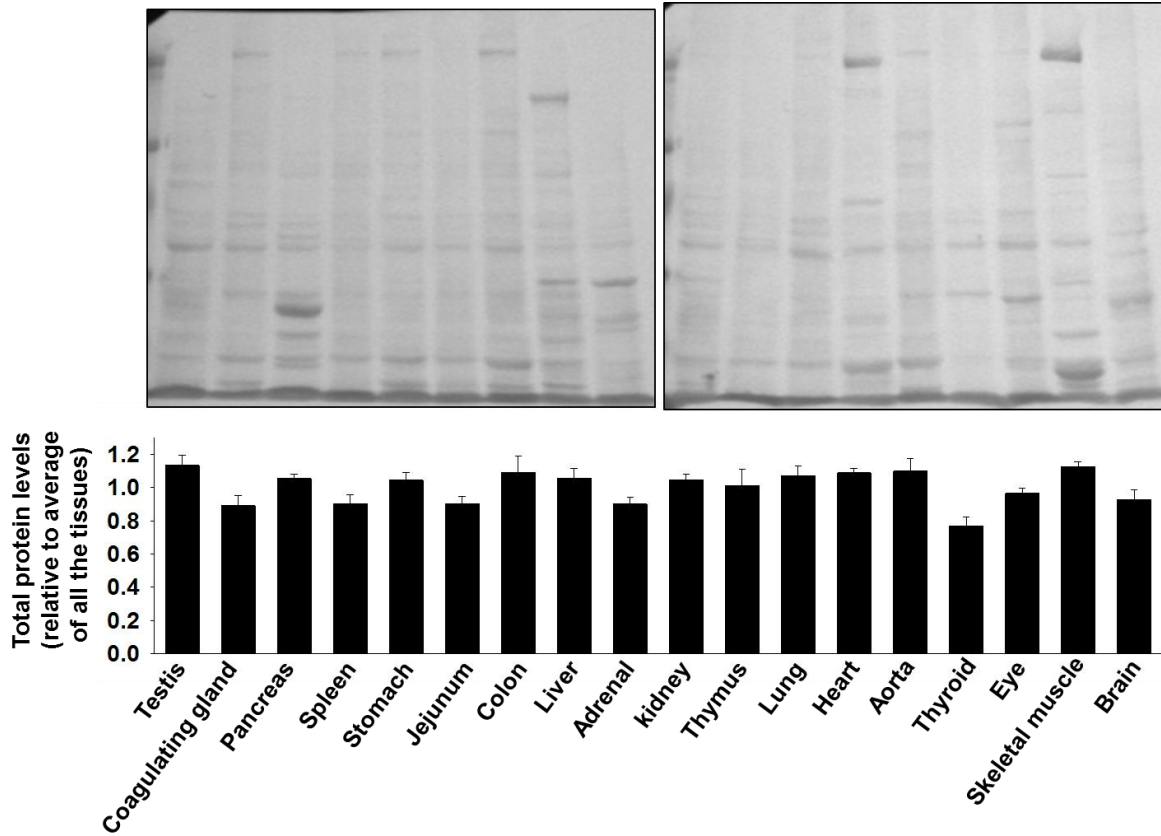


## Supplemental table

Gene (accession no.)	Primer (5'-)		bp
	Forward	Reverse	
TrkB FL (NM_012731.2)	CGGACACATTTGTTTCAGCAC	AAGTCCTTGCGAGCATTGTC	178
TrkB T1 (NM_001163168.2)	GAGCATCTCTCGGTCTATGC	CCCATCCAGGGGGATCTTAT	147
TrkB T2 (NM_55293.1)	TTGGCATGAAAGGTAAGCAG	AGTGGGCAAGGCTGAGTAAT	204
18s ribosome (NR_046239.1)	TGAGGCCATGATTAAGAGGG	AGTCGGCATCGTTTATGGTC	190
GAPDH (NM_017008.4)	GAGAATGGGAAGCTGGTCAT	GAAGACGCCAGTAGACTCCA	120

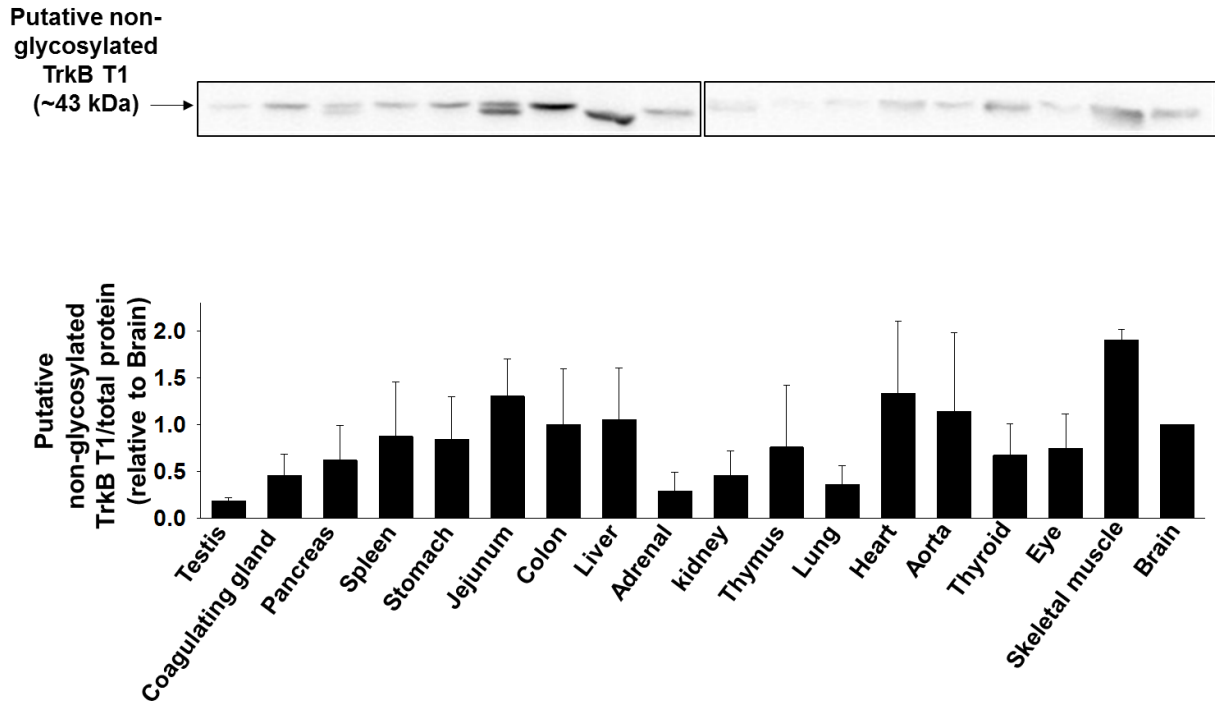
List of gene specific primers used for RT-PCR. bp: predicted base pairs of amplification products, TrkB FL: full length tyrosine receptor kinase B (TrkB), TrkB T1: truncated TrkB type 1, TrkB T2: truncated TrkB type 2, GAPDH: glyceraldehyde-3-phosphate dehydrogenase

## Supplemental figure 1



Equal loading of protein was confirmed by Ponceau-S staining. Total protein was extracted from homogenized tissues of Wistar rats and Western blotting was performed. The membranes were stained with Ponceau-S before they were blocked with 0.5% skim milk. The density of all the visible bands in each lane was measured as expression level of total protein (n = 3-4). Bar graph represents the data normalized to averaged density of all the tissues. Data were expressed as mean  $\pm$  SE.

## Supplemental figure 2



Expression level of putative non-glycosylated Truncated tyrosine receptor kinase B type-1 (TrkB T1) protein in rat tissues. Total protein was extracted from homogenized tissues of Wistar rats. Expression of putative non-glycosylated TrkB T1 protein was determined by Western blotting (n = 3-4) using anti-TrkB T1 antibody (sc-119, Santa Cruz Biotech). Equal loading of protein was confirmed by Ponceau-S staining. The data normalized to total protein were shown relative to brain in bar graph. Data were expressed as mean  $\pm$  SE.