

Metabolic Profiling of Green Tea Treatments in Zucker Diabetic Rats

Using ¹H NMR: Supplemental Figures

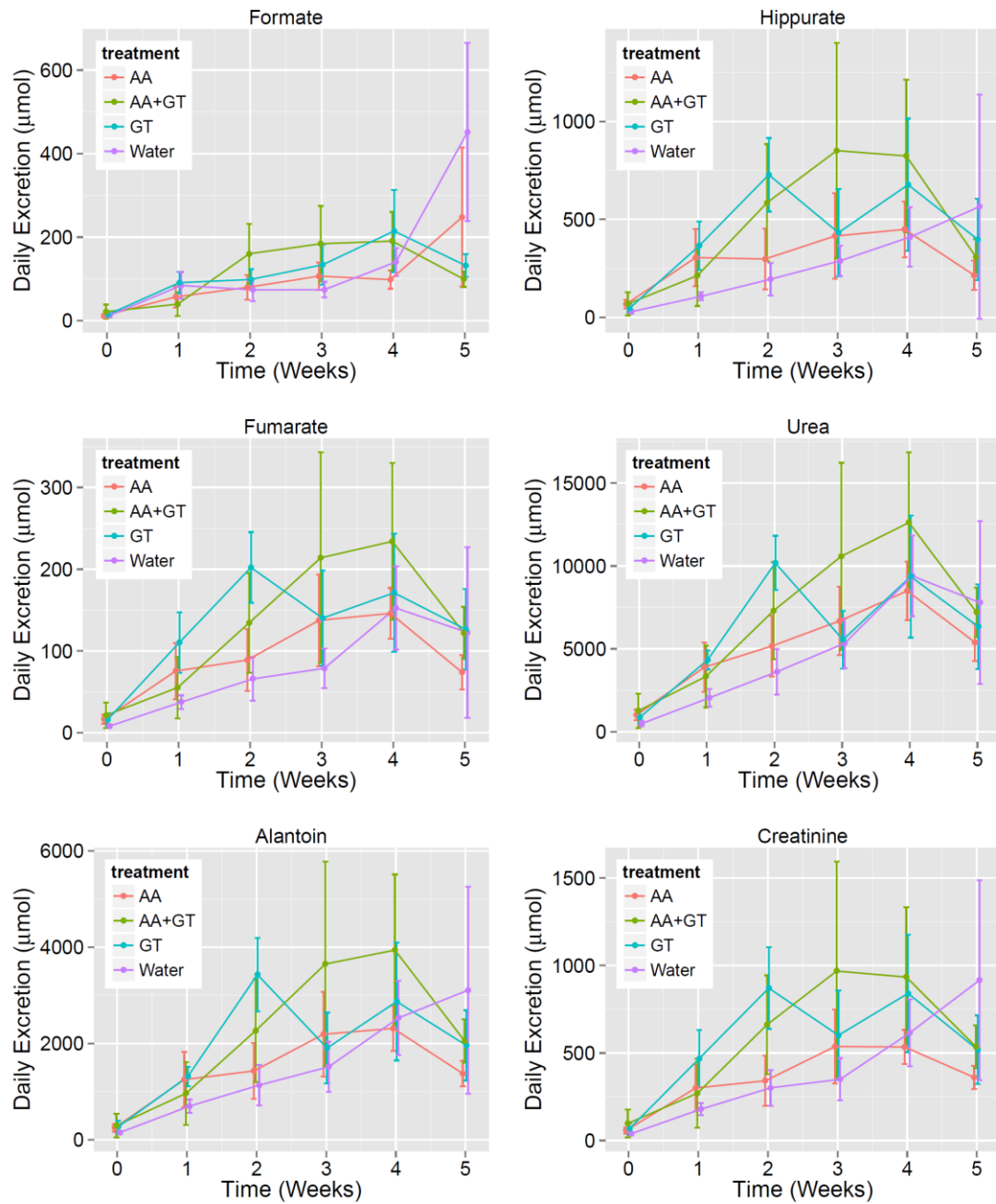
Shucha Zhang¹, Angela Myracle², Ke Xiao³, Ping Yan⁴, Tao Ye⁵, Elsa Janle^{*6},
Daniel Raftery^{*7}

1. Department of Neurosurgery, Brigham and Women's Hospital, 221 Longwood Ave, Boston, MA 02115
2. Food Science and Human Nutrition, University of Maine, 5735 Hitchner Hall, Orono, ME 04469
3. Department of Statistics, University of California at Riverside, 900 University Ave, Riverside, CA 92521.
4. Clinical Research, Fred Hutchinson Cancer Research Center, 1100 Fairview Ave. N., Seattle, WA 98109
5. Translational medicine, Biogen Idec Inc, 14 Cambridge Center, Cambridge, MA 02142
6. * Food and Nutrition, Purdue University, 700 West State Street, West Lafayette, IN 47907
7. * Anesthesiology and Pain Medicine, Mitochondria and Metabolism Center (MMC), University of Washington, 850 Republican Street, Seattle, Washington 98109

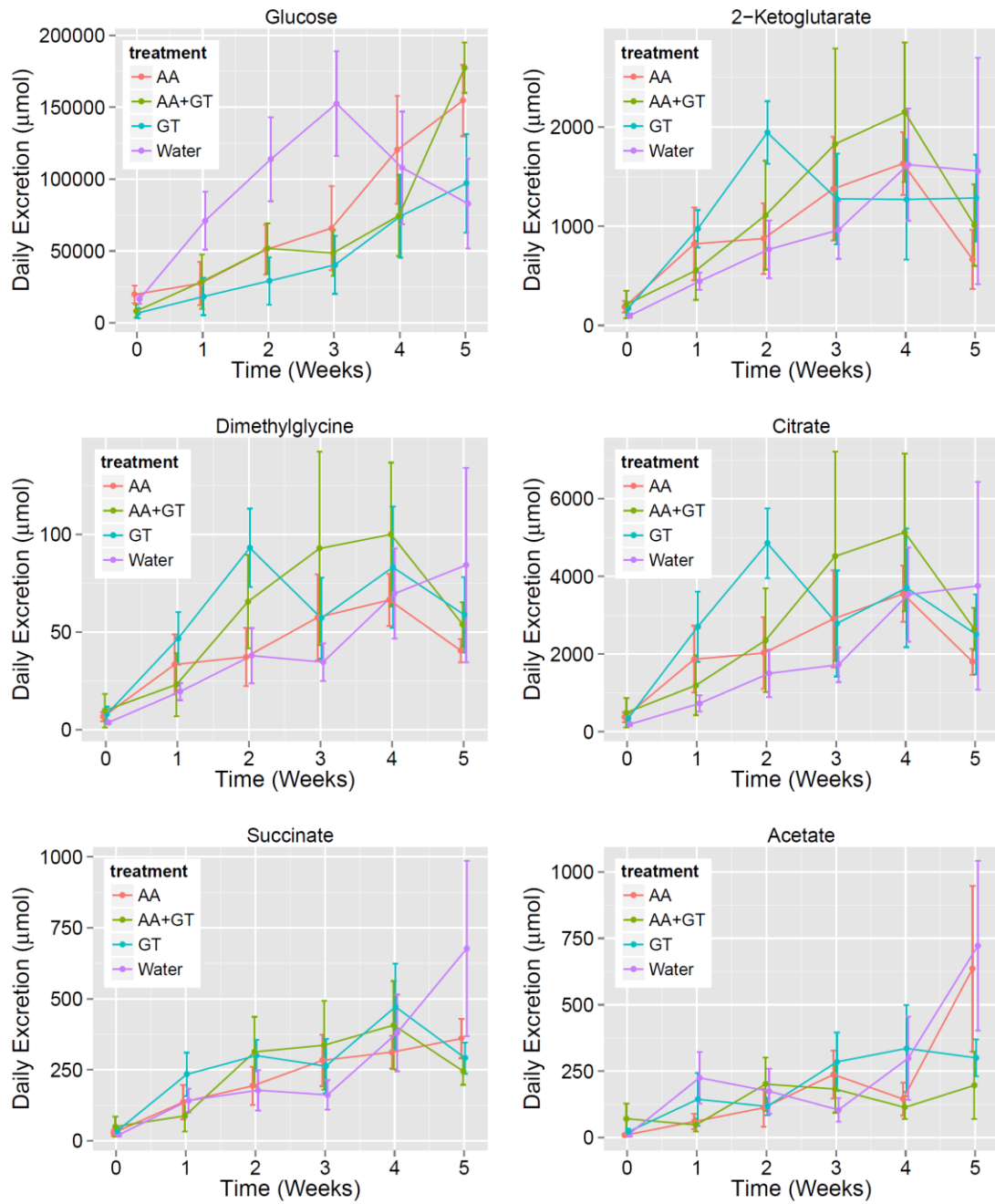
*To whom the correspondence should be addressed: draftery@uw.edu,

Phone: 206-543-9709, Fax: 206-616-4819; janle@purdue.edu, Phone: (765)

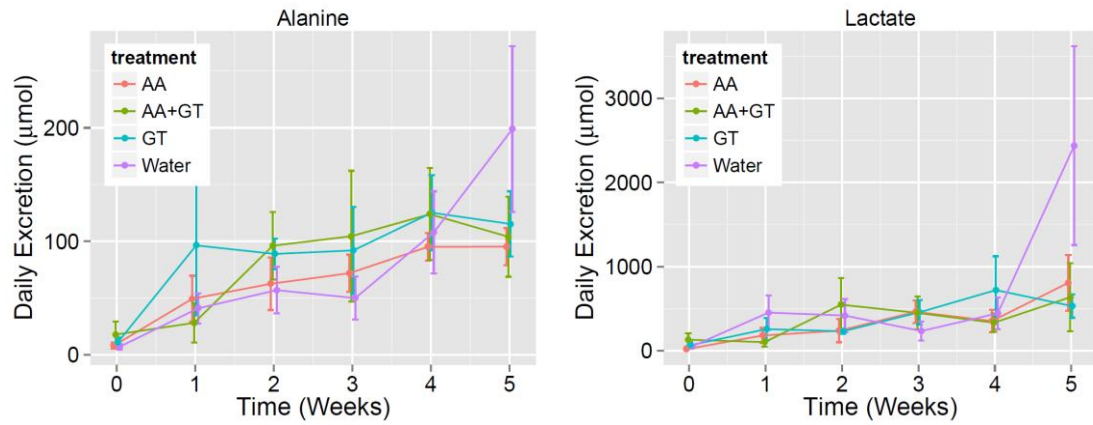
494-1566, Fax: (765) 494-0906



Supplementary Figure 1a. Daily excreted amounts of formate, hippurate, fumarate, urea, allantoin, and creatinine during the baseline week and treatment weeks.



Supplementary Figure 1b. Daily excreted amounts of glucose, 2-ketoglutarate, dimethylglycine, citrate, succinate, and acetate during the baseline week and treatment weeks.



Supplementary Figure 1c. Daily excreted amounts of alanine and lactate during the baseline week and treatment weeks.