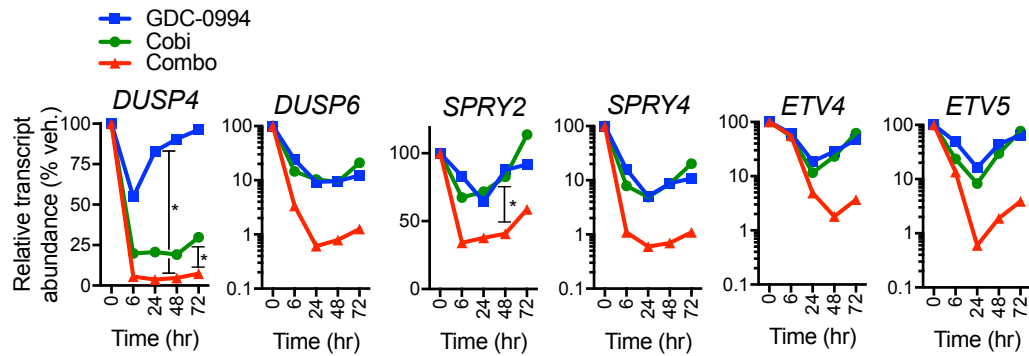


Figure S5

a



Supplemental Figure 5. Dual node targeting leads to deeper target gene suppression and overcome reactivation of transcripts in *KRAS* mutant cell line. Pathway reactivation at the level of MAPK target gene transcript in HCT116 cells using the EC₅₀ concentrations for single agents cobimetinib 0.25 μ M, GDC-0994 1.25 μ M compared to fractional dual node targeting with cobimetinib 0.125 μ M and GDC-0994 0.625 μ M at indicated time points. One-way ANOVA, * p<0.05.