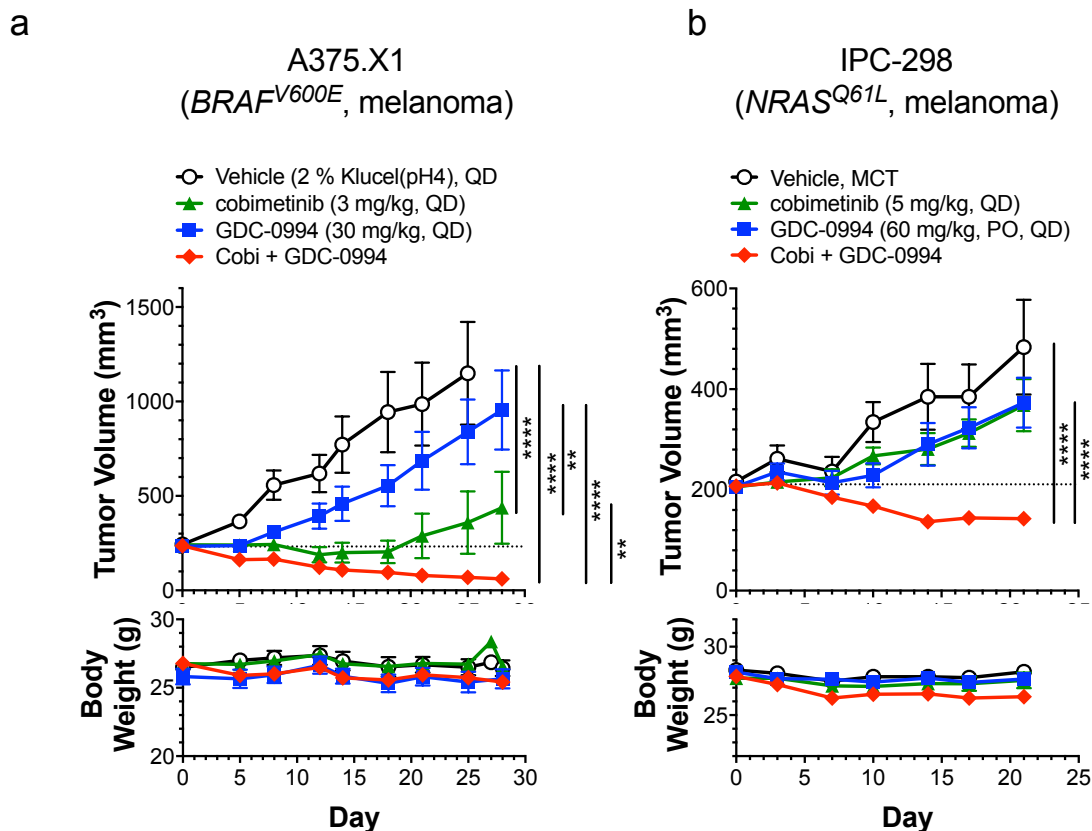


Figure S9



Supplemental Figure 9. Combination activity of cobimetinib and GDC-0994 in a *BRAF* and *NRAS* mutant melanoma xenograft model. (a) A375.X1 (*BRAF*^{V600E}, melanoma) tumor xenograft bearing animals (n=10/group) were treated with vehicle, cobimetinib (3 mg/kg, PO, QD), GDC-0994 (30 mg/kg, PO, QD) or the combination for 21 days and tumor growth and body weights were measured. Group mean tumor volume and body weights are plotted \pm SEM. (b) IPC-298 (*NRAS*^{Q61L}, melanoma) tumor xenograft bearing animals (n=10/group) were treated with vehicle, cobimetinib (5 mg/kg, PO, QD), GDC-0994 (60 mg/kg, PO, QD) or the combination for 21 days and tumor growth and body weights were measured. Group mean tumor volume and body weights are plotted \pm SEM. Groups achieving statistical significance are shown (Students t-test, ** p<0.005, *** p<0.001, **** p<0.0001).