

Figure A.

a.

```

Majority      -GPGG-RAGGFPAGQIEGGKA----
                10      20
SIVgag.pro   VGDHQ-AAMQIIRDIINEEAADWDL
PCS1.pro     -APSSGRGGNYFVQQIGGNYV
PCS2.pro     -GGPG-QKARLMAEALKEALAP
PCS3.pro     LAPVP---IPFAAAQQRGPRKPI
PCS4.pro     MAKCPDRQAGF-LGLGPWGKK
PCS5.pro     -GPWGKKPRNFPMAQVHQGLM
PCS6.pro     YGQMPRQTGGF-FRPWSMGKE
PCS7.pro     -WSMGKEAPQFPHGSSASGAD
PCS8.pro     -LQGG--DRGFAAPQFSLWRRPV
PCS9.pro     LTALG-MSLNFPIAKVEPVKV
PCS10.pro    KDPiEGEETYTDGSCNKQS
PCS11.pro    LVSQGIHQVLF-LEKIEPAQE
PCS12.pro    -NQGQYMNTPWRNPAEEREK
  
```

b.

```

Majority      -----GPL-----GQEA-N-----FPAGQVAGGKE--
                10      20      30
SIVenv1.pro  NVTESFDANNNTVTEQAIEDVWQLFETSIRPCVKLSE
PCS1.pro     -----APSS---GRGG-N-----YFVQQIGGNYV
PCS2.pro     -----GGP---GQR-R-----LMAEALKEALAP
PCS3.pro     -----LAPVP-----IP-----FAAAQQRGPRKPI
PCS4.pro     -----MAKCP---DRQA-G-----F-LGLGPWGKK
PCS5.pro     -----GPN---GKKPRN-----FPMAQVHQGLM
PCS6.pro     -----YGQMP---RQTG-G-----F-FRPWSMGKE
PCS7.pro     -----WSM---GKEAPQ-----FPHGSSASGAD
PCS8.pro     -----LQ---GGDR-G-----FAAPQFSLWRRPV
PCS9.pro     -----LTAL---GMSL-N-----FPIAKVEPVKV
PCS10.pro    -----KDPiE---GET-Y-----YTDGSCNKQS
PCS11.pro    -----LVSQ---GIHQ-V-----LFLEKIEPAQE
PCS12.pro    -----NQ---GQYM-N-----TPWRNPAEEREK
  
```

c.

```

Majority      ---AQGPR---NFPFAGAAQEGLE-----
                10      20      30
SIVenv2.pro  RVTIAIEKYLKDQAQLNAWGCAFRQVCHTTPWPNA
PCS1.pro     ---APSSG---RGGNYFVQQIGGNYV
PCS2.pro     ---GGPGQK---ARLMAEALKEALAP
PCS3.pro     ---LAPVP-----IPFAAAQQRGPRKPI
PCS4.pro     ---MAKCPD---RQAGFGLGPWGKK
PCS5.pro     GPWGKKPR---NFPMAQVHQ-GLM
PCS6.pro     ---YGQMPR---QTGGFFRPWSMGKE
PCS7.pro     ---WSMGKE-APQFPHGSSASGAD
PCS8.pro     ---LQGGD---RGFAAPQFSLWRRPV
PCS9.pro     -LTALGMS--LNFPIAKVEPVKV
PCS10.pro    ---KDPiEGEETYTDGSCNKQS
PCS11.pro    -LVSQGIHQVLF-LEKIEPAQE
PCS12.pro    ---NQGQY-M-NTPWRNPAEEREK
  
```

Figure A. Non-PCS peptides have no sequence homology with PCS peptides. The sequences of PCS peptides were aligned against that of non-PCS peptide SIVgag (a), SIVenv1 (b) or SIVenv2 (c) by Clustal W method. Alignment reports are shown, with amino acids that match those of non-PCS peptides decorated in black shades.

Figure B.

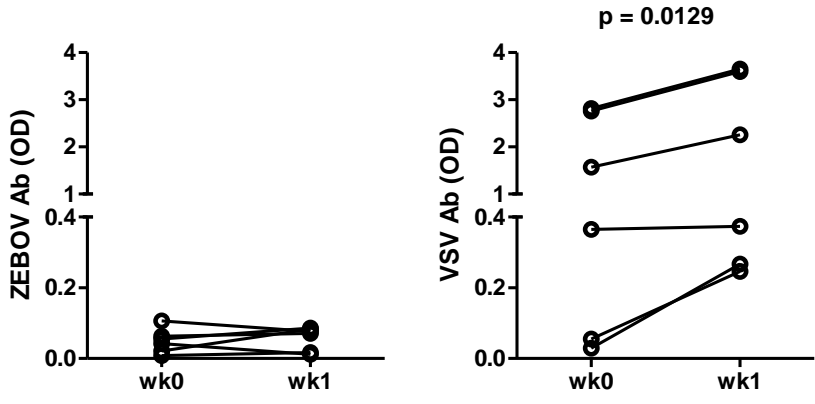


Figure B. rVSVwt induced anti-VSV antibodies in control monkeys of the PCS vaccination experiments. The six control monkeys of the PCS vaccination experiments (i.e. monkeys from Fig 6B), who received vaccine vehicles, rVSVwt and water, were quantified by ELISA for levels of plasma IgG to Zaire Ebola virus (ZEBOV) and vesicular stomatitis virus (VSV) at time points of weeks 0 and 1 after the second boost. OD, optical density. rVSVwt significantly boosted antibodies to VSV but not ZEBOV as confirmed by Student's paired *t* test.

Table A. Information list of 108 female Mauritian Cynomolgus macaques for screening of natural antibodies to SIV antigens.

No.	ID	Source	MHC haplotypes		Antibody (ng/ml)															
			Class I	Class II	PCS1	PCS2	PCS3	PCS4	PCS5	PCS6	PCS7	PCS8	PCS9	PCS10	PCS11	PCS12	SIVgag	SIVenv1	SIVenv2	
1	AB484J	Colony bred	M3/M6	M4/M1	3.08	5.15	3.78	4.65	3.14	2.96	4.50	2.95	3.89	3.23	56.10	3.38	3.63	4.34	3.02	
2	AB841J	Colony bred	M4/recM4M1	M3/M6	4.24	7.68	4.28	4.54	5.38	6.58	8.53	4.74	5.06	3.14	40.76	6.15	5.69	12.59	5.24	
3	AC177I	Colony bred	M1/M3	M1/M3	0.95	1.03	0.79	1.46	1.10	0.89	0.92	1.14	0.93	0.64	0.89	1.17	1.11	1.61	1.33	
4	AD241H	Colony bred	M1/M4	M1/M4	0.74	0.62	2.21	1.08	0.77	0.58	0.36	0.76	0.42	0.19	0.44	0.40	0.53	0.55	1.07	
5	AE205I	Colony bred	M3/M3	M3/M3	0.41	0.57	0.76	2.88	1.01	0.89	6.62	0.62	0.93	0.49	1.45	0.49	0.40	0.70	1.45	
6	AE916H	Colony bred	M1/M3	M1/M3	3.82	4.45	5.56	5.27	4.44	2.64	3.70	3.02	4.10	5.35	3.07	3.78	2.95	5.97	3.23	
7	AE969H	Colony bred	M1/M1	M1/M1	3.14	1.33	1.24	5.67	2.28	1.97	1.41	1.94	0.93	0.55	1.93	0.96	3.30	1.42	3.26	
8	AF203G	Colony bred	M1/M6	M1/M6	1.57	1.03	1.54	1.02	0.86	0.92	0.93	1.32	0.99	1.20	0.80	1.23	1.14	0.86	1.16	
9	AF527H	Colony bred	M1/M4	M1/M4	0.55	0.59	0.58	8.85	13.82	0.65	1.38	0.79	0.36	0.28	0.43	0.56	0.37	1.24	8.10	
10	AF855F	Colony bred	recM2M3/M6	M3/M2	1.51	3.05	1.53	1.25	1.42	3.61	1.20	2.06	1.18	0.93	4.59	2.06	2.07	3.51	1.72	
11	AH695F	Colony bred	M3/M3	M3/M3	1.16	1.59	1.08	1.31	1.21	2.04	0.89	1.51	1.42	0.90	2.62	1.17	1.38	1.94	1.42	
12	AJ753E	Colony bred	M1/M3	M1/M3	1.87	3.28	4.16	4.42	32.84	1.90	2.07	1.59	2.66	3.14	7.91	6.98	1.35	3.08	2.76	
13	AL397D	Colony bred	M1/recM4M5	M2/M5	0.55	0.63	0.70	3.25	0.95	0.73	0.50	1.32	0.66	0.43	0.44	0.61	0.65	1.07	13.27	
14	AL554E	Colony bred	M5/recM2M1	M5/M2	1.33	3.24	2.24	5.42	2.37	3.30	1.48	2.80	1.49	1.41	3.30	1.85	2.36	3.32	136.33	
15	AL66B	Colony bred	M2/recM2M4	M2/M4	3.91	3.30	3.33	1.19	1.63	4.55	2.53	3.16	2.48	3.63	4.92	4.25	4.04	9.61	1.94	
16	AL793C	Colony bred	M1/M1	M1/M1	1.27	2.13	1.23	2.10	1.01	1.39	0.74	2.28	0.96	0.81	1.13	1.38	1.38	2.83	1.14	
17	AL850A	Colony bred	M1/M6	M1/M6	0.68	1.21	0.87	3.46	1.24	0.95	1.23	1.17	0.68	0.52	0.74	0.84	1.44	3.39	2.95	
18	AN190C	Colony bred	M1/M4	M1/M4	1.60	0.54	0.84	1.61	0.96	1.01	0.59	0.84	0.50	0.43	1.70	0.70	0.64	0.93	1.24	
19	AP101B	Colony bred	M3/M6	M3/M6	1.23	1.03	1.01	5.74	1.16	1.85	0.83	1.11	0.90	0.79	105.01	0.93	0.79	1.23	1.24	
20	AP159A	Colony bred	M7/M1	M7/M3	2.58	0.73	0.84	1.11	2.19	1.05	0.50	0.96	0.63	0.67	66.25	14.12	0.70	0.84	1.07	
21	AP215A	Colony bred	M3/M6	M2/recM6M4M7	0.59	0.79	1.11	1.12	0.95	0.98	0.67	0.92	0.69	0.73	0.89	0.79	1.07	1.48	1.01	
22	AP489B	Colony bred	M3/recM4M1	M3/M1	1.84	0.47	0.40	0.60	0.53	0.41	0.33	0.55	0.25	0.31	0.33	0.31	0.36	0.55	0.50	
23	AR939A	Colony bred	M4/M7	M4/M7	2.62	0.44	0.61	1.25	0.98	0.53	1.07	0.73	0.41	0.25	0.41	0.49	0.34	0.58	0.96	
24	BF440D	Colony bred	M6/recM3M2	M6/M2	0.96	1.33	1.36	1.49	1.93	1.10	9.51	1.14	1.05	0.79	1.13	9.82	0.76	1.88	1.60	
25	BF282E	Colony bred	M3/M4	M3/M4	2.10	1.16	1.53	1.16	1.72	0.89	0.95	1.26	1.25	1.02	1.19	1.08	1.85	4.81	1.66	
26	BF289D	Colony bred	M4/recM3M1	M4/M1	0.64	0.44	0.40	1.73	1.01	0.55	0.44	0.55	0.36	0.25	0.36	0.43	0.49	0.73	14.50	
27	BF420E	Colony bred	M1/M3	M1/M3	1.21	3.08	1.97	3.83	2.22	1.84	1.13	1.73	2.01	0.93	1.93	1.50	1.21	1.79	2.93	
28	BF472D	Colony bred	M3/recM4M2	M3/M2	18.98	0.55	0.55	1.11	1.04	0.68	0.41	0.70	0.45	0.36	1.05	0.55	0.40	0.93	1.24	
29	BF513E	Colony bred	M2/M4	M2/M4	0.59	0.76	0.93	1.25	1.10	0.68	0.58	1.08	0.66	0.67	80.71	0.68	1.50	1.02	1.13	
30	BF519F	Colony bred	M2/recM3M2	M2/M2	1.30	0.65	0.70	1.36	1.19	1.36	0.53	0.90	0.47	0.39	1.24	0.67	0.95	0.84	7.94	
31	BF601C	Colony bred	M1/M6	M1/M6	0.84	0.41	0.46	1.05	0.68	0.52	0.36	0.67	0.28	0.22	0.39	0.40	0.34	4.76	0.67	
32	BF615C	Colony bred	M1/M4	M1/M4	1.96	2.91	1.79	1.99	1.39	6.22	3.47	2.30	2.10	2.00	16.04	2.43	3.01	3.99	1.90	
33	BF651B	Colony bred	M2/recM1M3	M2/M3	2.93	2.48	3.72	1.65	1.76	1.90	2.33	2.67	2.56	2.77	1.90	2.77	2.56	3.33	1.69	
34	BF656B	Colony bred	M6/M4	M6/M1	1.45	0.73	0.90	3.24	1.69	1.21	0.53	1.85	0.57	0.44	238.55	0.76	0.73	0.90	12.52	
35	BF664C	Colony bred	M3/M4	M3/M4	1.35	1.55	2.40	1.93	21.13	1.19	1.29	1.38	1.42	1.97	0.83	1.20	0.84	3.19	2.64	
36	BF690D	Colony bred	M1/M2	M1/M2	2.50	0.84	0.64	1.96	0.98	0.77	1.16	0.80	0.57	0.50	0.73	0.80	0.74	1.79	5.30	
37	BF757C	Colony bred	M3/M6	M2/M6	1.45	1.65	2.09	2.66	7.60	26.34	1.72	1.64	1.34	1.61	0.98	1.56	1.20	2.15	7.27	
38	BF919C	Colony bred	M3/M3	M3/M3	0.93	0.81	0.96	2.91	1.13	0.74	0.70	0.92	0.97	0.64	0.71	0.81	0.76	1.24	2.31	
39	BF996A	Colony bred	recM1M2/recM4M5	M2/M5	6.49	8.87	10.83	12.45	5.81	3.73	6.90	5.08	6.94	13.13	4.59	7.05	5.17	7.57	3.93	
40	BF9F	Colony bred	M2/M3	M2/M3	0.95	0.82	0.83	0.84	0.71	1.30	0.53	0.93	0.79	0.76	1.39	0.96	0.81	1.07	1.14	
41	BM52B	Colony bred	M1/recM4M3	M1/M3	1.69	1.46	1.79	2.94	1.66	1.93	1.16	2.15	1.28	0.96	1.72	52.03	1.82	1.87	2.13	
42	BM654B	Colony bred	M1/M3	M1/M1	0.92	2.17	0.96	3.21	2.03	1.07	0.92	1.17	0.93	0.79	0.86	0.90	1.05	2.89	2.49	
43	JR2E	Colony bred	M2/M5	M2/M5	0.59	5.34	0.64	2.10	0.74	0.80	2.00	0.73	0.45	0.28	1.56	0.64	2.95	0.67	1.66	
44	M62J	Colony bred	M1/recM3M2	M1/M2	2.07	0.53	0.64	0.99	1.04	0.79	0.86	0.74	0.60	0.64	13.69	0.64	0.58	1.05	1.48	
45	N917K	Colony bred	M4/M7	M4/M7	1.33	1.39	1.88	2.23	2.99	1.87	1.79	1.53	1.76	1.36	2.28	1.39	1.20	1.69	2.64	
46	AM466B	Colony bred	M2/M3	M2/M3	2.04	2.84	2.16	1.88	2.28	1.41	2.64	1.96	2.56	1.26	1.72	2.30	1.85	4.62	3.05	
47	BF843A	Colony bred	M1/M1	M1/M1	0.56	0.76	0.64	1.77	0.89	5.60	0.59	0.84	0.94	0.52	7.70	0.81	0.84	1.64	3.48	
48	270G1	Colony bred	recM3M1/recM4M1	M1/M1	0.89	1.46	1.69	2.38	1.99	1.24	1.67	1.51	2.14	1.13	0.87	1.02	0.90	1.51	4.95	
49	AA687K	Colony bred	M4/recM5M1	M4/M4	0.47	0.71	0.65	2.36	0.92	1.04	10.00	0.96	0.45	0.30	0.61	0.61	0.53	4.83	1.53	
50	AE938G	Colony bred	M2/M5	M2/M5	0.62	5.43	1.04	1.83	1.27	1.21	0.76	1.30	0.72	0.49	1.79	0.79	0.90	1.69	1.30	
51	AF391K	Colony bred	M2/recM2M5	M1/M5	0.33	0.39	0.53	0.91	1.04	6.04	0.31	0.73	0.36	0.24	0.37	0.40	1.60	0.56	0.99	
52	AF801F	Colony bred	M1/M1	M1/M1	1.32	2.20	1.72	3.27	1.78	1.48	1.50	1.48	1.52	1.17	4.52	1.47	1.56	2.19	1.61	
53	AH121H	Colony bred	M3/M3	M3/M3	2.47	0.69	0.77	1.03	0.74	0.62	0.52	0.80	0.66	0.41	0.74	0.61	0.53	0.74	0.87	

54	AK101C	Colony bred	M3/M6	0.89	1.68	0.89	28.73	51.19	1.54	1.20	1.39	0.90	0.41	0.87	1.02	0.86	2.70	2.41
55	AK143F	Colony bred	M1/M5	0.65	0.65	0.71	1.02	0.74	0.92	0.55	0.98	0.60	0.44	0.81	0.56	0.64	2.01	1.05
56	AK178F	Colony bred	M2/M2	3.56	6.38	3.56	4.26	3.53	3.61	5.38	3.36	5.13	2.68	5.51	5.10	5.13	5.04	3.33
57	AK492H	Colony bred	M1/recM4M1	0.30	0.32	0.39	0.79	0.59	0.65	0.28	0.59	0.31	0.22	0.43	0.31	0.33	0.39	1.44
58	AK751E	Colony bred	recM2M6/M2	0.79	0.48	0.62	1.09	0.98	0.73	0.37	0.81	0.51	0.53	0.73	0.55	0.56	0.74	1.50
59	AK820D	Colony bred	recM2M1/M2	0.67	0.50	0.74	1.46	0.87	1.19	0.34	2.04	0.57	0.30	0.40	0.59	0.33	0.62	8.77
60	AK944F	Colony bred	M2/recM2M1	0.33	6.33	0.74	2.16	0.80	1.07	1.32	0.93	15.77	0.30	1.08	0.98	0.46	0.89	1.23
61	AL871C	Colony bred	M2/M4	5.07	7.39	9.87	7.86	7.20	4.74	5.72	4.47	5.62	9.41	4.83	6.40	3.16	5.59	4.40
62	AL891C	Colony bred	M1/M5	0.95	0.69	0.86	1.49	0.77	0.83	3.87	0.98	0.72	0.61	2.28	0.79	0.80	2.31	1.05
63	AM414E	Colony bred	M1/M2	0.36	0.57	0.46	1.00	0.62	0.53	0.46	0.65	0.36	0.27	0.52	0.43	0.40	0.50	0.81
64	AM541D	Colony bred	M2/M3	1.42	2.20	3.01	2.54	1.72	1.30	1.70	1.51	1.67	2.55	1.92	1.64	1.16	3.64	1.76
65	AN984C	Colony bred	recM1M4/M1	1.30	1.48	3.04	7.65	2.73	3.54	1.42	4.50	1.42	1.01	113.94	1.70	1.21	2.58	71.76
66	AT1555A	Colony bred	M1/M2	0.50	0.54	0.70	4.79	0.80	1.13	0.58	0.89	1.21	0.39	0.65	2.74	0.47	0.74	1.17
67	BF117F	Colony bred	M4/M4	0.65	2.71	0.68	1.15	0.92	0.77	0.81	0.93	0.65	0.39	112.31	0.73	0.56	1.10	1.17
68	GA138H	Colony bred	M1/recM2M1	0.76	0.71	0.46	1.03	0.62	0.70	0.44	0.65	0.48	0.33	0.81	1.41	0.47	0.56	0.64
69	BF325D	Colony bred	M2/M2	1.33	16.38	0.83	2.08	1.16	2.13	1.35	1.23	0.66	0.53	2.59	0.81	0.73	1.54	3.66
70	BF71G	Colony bred	M1/M5	2.40	4.05	2.95	46.41	2.18	3.56	3.08	2.36	25.05	2.13	3.81	15.39	3.24	3.70	24.00
71	BF790B	Colony bred	M2/M3	0.47	0.53	0.56	1.53	0.56	0.79	0.33	0.92	0.45	0.36	0.61	0.52	0.62	1.17	2.09
72	BF989C	Colony bred	M1/M3	0.65	0.73	0.56	0.76	0.73	1.51	0.68	1.02	0.45	0.39	1.20	0.58	0.56	1.04	2.44
73	BM38B	Colony bred	M1/M3	0.64	0.99	0.68	4.56	2.83	2.06	0.52	1.10	0.63	0.27	0.86	0.64	0.77	1.48	183.14
74	BM48B	Colony bred	M2/M3	11.61	18.01	18.43	13.27	11.70	6.95	14.93	8.96	15.79	17.60	9.88	13.24	9.61	14.61	9.38
75	E143NB	Colony bred	M1/M2	5.04	1.40	1.39	1.77	1.45	4.00	0.95	1.81	1.08	0.83	6.21	1.14	1.39	1.75	7.94
76	F823FH	Colony bred	M1/M4	0.30	0.39	0.40	0.68	0.56	0.49	0.50	0.56	0.56	0.30	0.67	0.40	0.37	0.83	0.90
77	GA828A	Colony bred	M1/M3	0.44	0.47	0.56	1.16	14.25	0.86	0.47	0.61	0.48	0.36	0.55	0.35	0.39	0.59	1.57
78	GA916A	Colony bred	recM4M6/M4	0.33	0.48	0.50	26.54	1.39	0.56	0.33	0.74	0.31	0.27	0.36	0.37	0.83	0.62	1.23
79	GR35BI	Colony bred	M1/M4	0.92	1.08	1.42	3.82	2.73	1.78	1.32	2.01	0.84	0.68	0.84	0.99	0.96	1.30	3.19
80	GR503K	Colony bred	M1/M3	0.84	0.66	0.80	1.49	1.02	1.01	0.84	1.01	0.63	0.39	0.90	0.61	0.59	1.16	2.18
81	GR924L	Colony bred	M3/M2	1.83	1.00	0.90	3.79	1.73	24.40	0.74	1.16	0.85	0.55	1.67	2.12	0.73	5.24	1.11
82	HT01AK	Colony bred	M5/recM2M3M1	1.42	1.55	2.30	5.03	2.31	1.44	1.23	2.00	5.25	2.01	97.27	1.35	0.84	1.29	2.01
83	JA89CL	Colony bred	M1/M4	0.77	0.82	0.98	1.77	0.98	0.95	0.93	0.98	0.76	0.56	1.29	1.32	0.62	0.92	1.26
84	JR19C	Colony bred	M1/M4	3.08	0.47	0.61	1.48	1.20	1.81	44.86	0.77	0.45	0.33	0.79	0.52	0.50	1.01	2.68
85	LP84B	Colony bred	M3/M1	0.71	0.71	0.77	3.67	1.42	0.73	0.46	0.98	0.57	0.42	0.30	0.67	0.89	2.22	1.29
86	BF541C	Colony bred	M1/M6	4.89	0.47	0.56	0.97	0.77	0.44	0.37	0.61	0.42	0.30	1.13	0.44	1.26	0.65	1.24
87	RAM1GAD	Colony bred	recM4M6/M4	2.34	3.59	2.52	2.69	2.96	2.28	2.71	3.26	2.36	1.72	3.30	3.01	2.53	2.15	2.37
88	S23K	Colony bred	M1/M4	0.86	0.75	0.83	2.04	1.39	0.86	0.90	1.02	0.84	0.39	1.23	0.73	0.64	0.89	1.14
89	S309CG	Colony bred	M4/M4	3.59	0.39	0.39	6.48	0.46	0.50	0.34	0.59	0.36	0.22	0.43	0.31	0.30	0.62	8.46
90	SZ48B	Colony bred	M4/recM1M2	0.41	0.51	0.74	1.27	0.68	0.44	0.34	0.56	0.48	0.46	12.47	0.46	0.21	0.56	23.10
91	T392AG	Colony bred	M3/recM3M4	0.33	0.75	0.59	2.32	0.67	0.62	0.37	0.77	0.41	0.30	89.57	0.49	0.52	0.56	0.84
92	V67J	Colony bred	M1/M1	1.90	3.19	3.81	6.22	2.68	1.82	6.56	2.00	2.45	2.52	1.91	1.96	1.50	2.68	2.96
93	YR335N	Colony bred	M1/recM4M6	0.33	0.42	0.50	60.96	1.04	0.67	0.28	0.62	0.87	0.27	0.46	0.49	0.36	0.74	1.05
94	Z518DD	Colony bred	recM1M5/M3	1.42	0.59	0.62	0.97	1.04	0.81	0.49	0.77	0.45	0.33	0.55	0.46	0.49	1.01	1.32
95	AM260D	Capture bred	M1/M4	1.05	1.41	1.36	2.13	3.39	1.44	1.60	1.90	0.74	0.59	186.46	1.25	2.45	1.77	1.84
96	AM672	Capture bred	M1/M6	36.68	1.84	1.86	2.18	2.68	2.36	33.77	2.42	1.58	1.21	8.01	2.04	13.58	2.64	2.41
97	AT789	Capture bred	M1/M3	2.06	0.79	0.98	1.12	4.28	0.91	7.62	1.17	0.62	0.53	0.60	0.85	1.27	1.56	1.72
98	AV187	Capture bred	M7/M4	0.49	0.45	0.70	2.12	0.66	0.68	6.80	0.75	0.40	0.33	0.52	0.94	0.63	0.59	0.85
99	AV429	Capture bred	M1/M2	0.96	1.03	1.46	2.72	2.08	2.50	2.42	2.16	0.68	0.43	13.52	0.92	1.20	15.65	1.82
100	BM524	Capture bred	M2/M6	3.25	0.74	1.24	0.96	1.70	1.20	0.82	1.60	0.64	0.46	1.69	0.68	1.17	0.98	4.92
101	BM576	Capture bred	M1/M3	2.12	1.32	1.59	3.12	6.09	1.51	1.09	2.22	0.80	0.70	10.12	1.02	1.45	3.39	1.60
102	BM795	Capture bred	M3/M4	0.68	0.73	0.80	0.57	1.75	1.24	3.98	0.89	0.70	0.48	1.35	0.59	2.16	1.72	1.28
103	AM271	Capture bred	M3/M5	5.43	0.54	0.98	0.75	1.00	0.74	0.47	1.22	0.56	0.36	7.45	0.51	0.58	0.57	1.64
104	AT45	Capture bred	M1/recM1M3	1.60	1.25	1.36	7.61	1.61	1.19	0.87	1.91	0.69	0.70	5.11	0.84	1.27	7.68	1.71
105	BM796	Capture bred	M3/M4	1.47	2.13	5.29	2.60	6.42	2.07	80.35	2.28	2.40	1.76	10.27	1.35	10.20	2.03	2.25
106	BM805	Capture bred	M1/M4	1.04	1.20	1.62	1.33	2.72	1.00	0.93	1.91	0.98	0.48	148.85	0.65	1.05	0.89	1.98
107	BM843	Capture bred	M3/M4	0.48	0.61	1.10	5.83	1.45	0.96	2.45	1.16	0.40	0.36	264.26	0.87	1.05	1.21	1.61
108	BM280	Capture bred	M3/M3	70.81	0.83	1.22	1.48	2.10	1.89	5.99	2.05	0.81	0.63	12.70	1.80	1.20	3.97	1.92

Table B panel a. Univariate analysis of the effects of MHC haplotypes on natural antibodies to SIV PCS1.

MHC I haplotype	No.(%) of monkeys		P value ^a	MHC II haplotype	No.(%) of monkeys		P value ^a
	Ab high	Ab low			Ab high	Ab low	
M1	12 (24)	38 (76)	0.4898	M1	12 (21)	46 (79)	0.0883
Non-M1	14 (32)	30 (68)		Non-M1	18 (36)	32 (64)	
M2	9 (38)	15 (62)	0.2013	M2	12 (36)	21 (64)	0.2437
Non-M2	18 (24)	57 (76)		Non-M2	18 (24)	57 (76)	
M3	11 (29)	27 (71)	1.0000	M3	12 (31)	27 (69)	0.6597
Non-M3	17 (28)	43 (72)		Non-M3	18 (26)	50 (74)	
M4	7 (23)	23 (77)	0.6256	M4	9 (26)	26 (74)	0.8192
Non-M4	20 (30)	46 (70)		Non-M4	21 (30)	49 (70)	
M5	2 (25)	6 (75)	1.0000	M5	3 (25)	9 (75)	1.0000
Non-M5	27 (28)	68 (72)		Non-M5	27 (28)	69 (72)	
M6	4 (29)	10 (71)	1.0000	M6	4 (36)	7 (64)	0.4989
Non-M6	25 (28)	65 (72)		Non-M6	25 (27)	67 (73)	
M7	2 (50)	2 (50)	0.3080	M7	2 (67)	1 (33)	0.1991
Non-M7	28 (27)	76 (73)		Non-M7	28 (28)	73 (72)	

a. Fisher's exact test (uncorrected p value).

Recombinant haplotypes for MHC I or MHC II were excluded from analysis.

Ab high, ≥ 2 ng/ml; Ab low, < 2 ng/ml.

Table B panel b. Univariate analysis of the effects of MHC haplotypes on natural antibodies to SIV PCS2.

MHC I haplotype	No.(%) of monkeys		P value ^a	MHC II haplotype	No.(%) of monkeys		P value ^a
	Ab high	Ab low			Ab high	Ab low	
M1	9 (18)	41 (82)	0.1515	M1	11 (19)	47 (81)	0.0833
Non-M1	14 (32)	30 (68)		Non-M1	17 (34)	33 (66)	
M2	11 (46)	13 (54)	0.0137	M2	14 (42)	19 (58)	0.0160
Non-M2	14 (19)	61 (81)		Non-M2	14 (19)	61 (81)	
M3	9 (24)	29 (76)	0.6470	M3	10 (26)	29 (74)	1.0000
Non-M3	17 (28)	43 (72)		Non-M3	18 (26)	50 (74)	
M4	6 (20)	24 (80)	0.3326	M4	7 (20)	28 (80)	0.3517
Non-M4	20 (30)	46 (70)		Non-M4	21 (30)	49 (70)	
M5	4 (50)	4 (50)	0.1084	M5	5 (42)	7 (58)	0.2916
Non-M5	22 (23)	73 (77)		Non-M5	23 (24)	73 (76)	
M6	2 (14)	12 (86)	0.3483	M6	1 (9)	10 (91)	0.2826
Non-M6	25 (28)	65 (72)		Non-M6	25 (27)	67 (73)	
M7	0 (0)	4 (100)	0.5707	M7	0 (0)	3 (100)	0.5618
Non-M7	28 (27)	76 (73)		Non-M7	28 (28)	73 (72)	

a. Fisher's exact test (uncorrected p value).

Recombinant haplotypes for MHC I or MHC II were excluded from analysis.

Ab high, ≥ 2 ng/ml; Ab low, < 2 ng/ml.

Table B panel c. Univariate analysis of the effects of MHC haplotypes on natural antibodies to SIV PCS3.

MHC I haplotype	No.(%) of monkeys		P value ^a	MHC II haplotype	No.(%) of monkeys		P value ^a
	Ab high	Ab low			Ab high	Ab low	
M1	6 (12)	44 (86)	0.1159	M1	8 (14)	50 (86)	0.0934
Non-M1	11 (25)	33 (75)		Non-M1	14 (28)	36 (72)	
M2	7 (29)	17 (71)	0.2313	M2	10 (30)	23 (70)	0.1195
Non-M2	12 (16)	63 (84)		Non-M2	12 (16)	63 (84)	
M3	9 (24)	29 (76)	0.6094	M3	9 (23)	30 (77)	0.6281
Non-M3	11 (18)	49 (82)		Non-M3	13 (19)	55 (81)	
M4	6 (20)	24 (80)	1.0000	M4	8 (23)	27 (77)	0.8010
Non-M4	13 (20)	53 (80)		Non-M4	14 (20)	56 (80)	
M5	3 (38)	5 (62)	0.3629	M5	4 (33)	8 (67)	0.2597
Non-M5	19 (20)	76 (80)		Non-M5	18 (19)	78 (81)	
M6	2 (14)	12 (86)	0.7300	M6	2 (18)	9 (82)	1.0000
Non-M6	19 (21)	71 (79)		Non-M6	19 (21)	73 (79)	
M7	0 (0)	4 (100)	0.5799	M7	0 (0)	3 (100)	1.0000
Non-M7	22 (21)	82 (79)		Non-M7	22 (22)	79 (78)	

a. Fisher's exact test (uncorrected p value).

Recombinant haplotypes for MHC I or MHC II were excluded from analysis.

Ab high, ≥ 2 ng/ml; Ab low, < 2 ng/ml.

Table B panel d. Univariate analysis of the effects of MHC haplotypes on natural antibodies to SIV PCS4.

MHC I haplotype	No.(%) of monkeys		P value ^a	MHC II haplotype	No.(%) of monkeys		P value ^a
	Ab high	Ab low			Ab high	Ab low	
M1	25 (50)	25 (50)	0.6842	M1	30 (52)	28 (48)	0.8471
Non-M1	20 (45)	24 (55)		Non-M1	24 (48)	26 (52)	
M2	9 (38)	15 (62)	0.1592	M2	14 (42)	19 (58)	0.4036
Non-M2	42 (56)	33 (44)		Non-M2	40 (53)	35 (47)	
M3	19 (50)	19 (50)	1.0000	M3	17 (44)	22 (56)	0.4231
Non-M3	31 (52)	29 (48)		Non-M3	36 (53)	32 (47)	
M4	15 (50)	15 (50)	0.8280	M4	18 (51)	17 (49)	0.8377
Non-M4	31 (47)	35 (53)		Non-M4	34 (49)	36 (51)	
M5	4 (50)	4 (50)	1.0000	M5	7 (58)	5 (42)	0.7608
Non-M5	47 (49)	48 (51)		Non-M5	47 (49)	49 (51)	
M6	7 (50)	7 (50)	1.0000	M6	5 (45)	6 (55)	1.0000
Non-M6	44 (49)	46 (51)		Non-M6	45 (49)	47 (51)	
M7	2(50)	2 (50)	1.0000	M7	1 (33)	2 (67)	1.0000
Non-M7	52 (50)	52 (50)		Non-M7	50 (50)	51 (50)	

a. Fisher's exact test (uncorrected p value).

Recombinant haplotypes for MHC I or MHC II were excluded from analysis.

Ab high, ≥ 2 ng/ml; Ab low, < 2 ng/ml.

Table B panel e. Univariate analysis of the effects of MHC haplotypes on natural antibodies to SIV PCS5.

MHC I haplotype	No.(%) of monkeys		P value ^a	MHC II haplotype	No.(%) of monkeys		P value ^a
	Ab high	Ab low			Ab high	Ab low	
M1	19 (38)	31 (62)	0.2829	M1	16 (28)	42 (72)	0.6754
Non-M1	12 (27)	32 (73)		Non-M1	16 (32)	34 (68)	
M2	5 (21)	19 (79)	0.2138	M2	9 (27)	24 (73)	0.6543
Non-M2	27 (36)	48 (64)		Non-M2	25 (33)	50 (67)	
M3	16 (42)	22 (58)	0.2773	M3	14 (36)	25 (64)	0.6702
Non-M3	18 (30)	42 (70)		Non-M3	21 (31)	47 (69)	
M4	10 (33)	20 (67)	1.0000	M4	11 (31)	24 (69)	0.8289
Non-M4	23 (35)	43 (65)		Non-M4	24 (34)	46 (66)	
M5	3 (38)	5 (62)	1.0000	M5	5 (42)	7 (58)	0.5198
Non-M5	31 (33)	64 (67)		Non-M5	30 (31)	66 (69)	
M6	4 (29)	10 (71)	1.0000	M6	4 (36)	7 (64)	1.0000
Non-M6	30 (33)	60 (67)		Non-M6	30 (33)	62 (67)	
M7	2(50)	2 (50)	0.5938	M7	2 (67)	1 (33)	0.2614
Non-M7	33 (32)	71 (68)		Non-M7	33 (33)	68 (67)	

a. Fisher's exact test (uncorrected p value).

Recombinant haplotypes for MHC I or MHC II were excluded from analysis.

Ab high, ≥ 2 ng/ml; Ab low, < 2 ng/ml.

Table B panel f. Univariate analysis of the effects of MHC haplotypes on natural antibodies to SIV PCS6.

MHC I haplotype	No.(%) of monkeys		P value ^a	MHC II haplotype	No.(%) of monkeys		P value ^a
	Ab high	Ab low			Ab high	Ab low	
M1	9 (18)	41 (82)	0.3270	M1	11 (19)	47 (81)	0.3606
Non-M1	12 (27)	32 (73)		Non-M1	14 (28)	36 (72)	
M2	8 (33)	16 (67)	0.1611	M2	11 (27)	22 (73)	0.1362
Non-M2	14 (19)	61 (81)		Non-M2	14 (33)	61 (67)	
M3	8 (21)	30 (79)	0.6327	M3	6 (15)	33 (85)	0.3297
Non-M3	16 (27)	44 (73)		Non-M3	17 (25)	51 (75)	
M4	5 (17)	25 (83)	0.5949	M4	8 (23)	27 (77)	1.0000
Non-M4	16 (24)	50 (76)		Non-M4	17 (24)	53 (76)	
M5	2 (25)	6 (75)	1.0000	M5	4 (42)	8 (58)	0.4672
Non-M5	21 (22)	74 (78)		Non-M5	21 (31)	75 (69)	
M6	4 (29)	10 (71)	0.7333	M6	3 (27)	8 (73)	0.7152
Non-M6	20 (22)	70 (78)		Non-M6	21 (23)	71 (77)	
M7	0 (0)	4 (100)	0.5714	M7	0 (0)	3 (100)	1.0000
Non-M7	25 (24)	79 (76)		Non-M7	25 (25)	76 (75)	

a. Fisher's exact test (uncorrected p value).

Recombinant haplotypes for MHC I or MHC II were excluded from analysis.

Ab high, ≥ 2 ng/ml; Ab low, < 2 ng/ml.

Table B panel g. Univariate analysis of the effects of MHC haplotypes on natural antibodies to SIV PCS7.

MHC I haplotype	No.(%) of monkeys		P value ^a	MHC II haplotype	No.(%) of monkeys		P value ^a
	Ab high	Ab low			Ab high	Ab low	
M1	10 (20)	40 (80)	0.1615	M1	12 (21)	46 (79)	0.1331
Non-M1	15 (34)	29 (66)		Non-M1	14 (34)	33 (66)	
M2	8 (33)	16 (67)	0.4423	M2	10 (30)	23 (70)	0.6406
Non-M2	19 (25)	56 (75)		Non-M2	19 (25)	56 (75)	
M3	11 (29)	27 (71)	0.8202	M3	12 (31)	27 (69)	0.4944
Non-M3	16 (27)	44 (73)		Non-M3	16 (24)	52 (76)	
M4	10 (33)	20 (67)	0.4701	M4	11 (31)	24 (69)	0.6441
Non-M4	17 (26)	49 (74)		Non-M4	18 (26)	52 (74)	
M5	3 (38)	5 (62)	0.4290	M5	4 (33)	8 (67)	0.7303
Non-M5	24 (25)	71 (75)		Non-M5	25 (26)	71 (74)	
M6	3 (21)	11 (79)	0.7542	M6	3 (27)	8 (73)	1.0000
Non-M6	25 (28)	65 (72)		Non-M6	25 (27)	67 (73)	
M7	1 (25)	3 (75)	1.0000	M7	0 (0)	3 (100)	0.5618
Non-M7	28 (27)	76 (73)		Non-M7	28 (28)	73 (72)	

a. Fisher's exact test (uncorrected p value).

Recombinant haplotypes for MHC I or MHC II were excluded from analysis.

Ab high, ≥ 2 ng/ml; Ab low, < 2 ng/ml.

Table B panel h. Univariate analysis of the effects of MHC haplotypes on natural antibodies to SIV PCS8.

MHC I haplotype	No.(%) of monkeys		P value ^a	MHC II haplotype	No.(%) of monkeys		P value ^a
	Ab high	Ab low			Ab high	Ab low	
M1	11 (22)	39 (78)	1.0000	M1	14 (24)	44 (76)	1.0000
Non-M1	9 (20)	35 (80)		Non-M1	12 (24)	38 (76)	
M2	8 (33)	16 (67)	0.2654	M2	9 (27)	24 (73)	0.6305
Non-M2	15 (20)	60 (80)		Non-M2	17 (22)	58 (78)	
M3	6 (16)	32 (84)	0.3203	M3	9 (23)	30 (77)	1.0000
Non-M3	16 (27)	44 (73)		Non-M3	17 (25)	51 (75)	
M4	6 (20)	24 (80)	0.7952	M4	7 (20)	28 (80)	0.6299
Non-M4	16 (24)	50 (76)		Non-M4	18 (26)	52 (74)	
M5	3 (38)	5 (62)	0.3981	M5	5 (33)	7 (67)	0.1558
Non-M5	22 (23)	73 (77)		Non-M5	21 (26)	75 (74)	
M6	3 (21)	11 (79)	1.0000	M6	2 (18)	9 (82)	1.0000
Non-M6	22 (24)	68 (76)		Non-M6	23 (25)	69 (75)	
M7	0 (0)	4 (100)	0.5703	M7	0 (0)	3 (100)	0.5712
Non-M7	26 (25)	78 (75)		Non-M7	26 (26)	75 (74)	

a. Fisher's exact test (uncorrected p value).

Recombinant haplotypes for MHC I or MHC II were excluded from analysis.

Ab high, ≥ 2 ng/ml; Ab low, < 2 ng/ml.

Table B panel i. Univariate analysis of the effects of MHC haplotypes on natural antibodies to SIV PCS9.

MHC I haplotype	No.(%) of monkeys		P value ^a	MHC II haplotype	No.(%) of monkeys		P value ^a
	Ab high	Ab low			Ab high	Ab low	
M1	6 (12)	44 (88)	0.5629	M1	10 (17)	48 (83)	0.8057
Non-M1	8 (18)	36 (82)		Non-M1	10 (20)	40 (80)	
M2	7 (29)	17 (71)	0.1319	M2	8 (24)	25 (76)	0.4199
Non-M2	11 (15)	64 (85)		Non-M2	12 (16)	63 (84)	
M3	7 (18)	31 (82)	1.0000	M3	8 (20)	31 (80)	0.7983
Non-M3	10 (17)	50 (83)		Non-M3	12 (18)	56 (82)	
M4	5 (17)	25 (83)	1.0000	M4	6 (17)	29 (83)	0.7977
Non-M4	11 (17)	55 (83)		Non-M4	14 (20)	56 (80)	
M5	2 (25)	6 (75)	0.6381	M5	3 (25)	9 (75)	0.6925
Non-M5	17 (18)	78 (82)		Non-M5	17 (18)	79 (82)	
M6	1 (7)	13 (93)	0.4571	M6	1 (9)	10 (91)	0.6844
Non-M6	18 (20)	72 (80)		Non-M6	18 (20)	74 (80)	
M7	0 (0)	4 (100)	1.0000	M7	0 (0)	3 (100)	1.0000
Non-M7	20 (19)	84 (81)		Non-M7	20 (20)	81 (80)	

a. Fisher's exact test (uncorrected p value).

Recombinant haplotypes for MHC I or MHC II were excluded from analysis.

Ab high, ≥ 2 ng/ml; Ab low, < 2 ng/ml.

Table B panel j. Univariate analysis of the effects of MHC haplotypes on natural antibodies to SIV PCS10.

MHC I haplotype	No.(%) of monkeys		P value ^a	MHC II haplotype	No.(%) of monkeys		P value ^a
	Ab high	Ab low			Ab high	Ab low	
M1	5 (10)	45 (90)	0.7500	M1	7 (12)	51 (88)	0.5881
Non-M1	6 (14)	38 (86)		Non-M1	8 (16)	42 (84)	
M2	6 (25)	18 (75)	0.0772	M2	7 (21)	26 (79)	0.2248
Non-M2	7 (9)	68 (91)		Non-M2	8 (11)	67 (89)	
M3	5 (13)	33 (87)	1.0000	M3	5 (13)	34 (87)	1.0000
Non-M3	8 (13)	52 (87)		Non-M3	9 (13)	59 (87)	
M4	3 (10)	27 (90)	0.7487	M4	4 (11)	31 (89)	0.7686
Non-M4	10 (15)	56 (85)		Non-M4	11 (16)	59 (84)	
M5	2 (25)	6 (75)	0.2972	M5	3 (25)	9 (75)	0.3679
Non-M5	12 (13)	83 (87)		Non-M5	12 (13)	84 (87)	
M6	1 (7)	13 (93)	0.6865	M6	1 (9)	10 (91)	0.7686
Non-M6	13 (14)	77 (86)		Non-M6	14 (15)	78 (85)	
M7	0 (0)	4 (100)	1.0000	M7	0 (0)	3 (100)	1.0000
Non-M7	15 (14)	89 (86)		Non-M7	15 (15)	86 (85)	

a. Fisher's exact test (uncorrected p value).

Recombinant haplotypes for MHC I or MHC II were excluded from analysis.

Ab high, ≥ 2 ng/ml; Ab low, < 2 ng/ml.

Table B panel k. Univariate analysis of the effects of MHC haplotypes on natural antibodies to SIV PCS11.

MHC I haplotype	No.(%) of monkeys		P value ^a	MHC II haplotype	No.(%) of monkeys		P value ^a
	Ab high	Ab low			Ab high	Ab low	
M1	17 (34)	33 (66)	0.4003	M1	19 (33)	39 (67)	0.2411
Non-M1	19 (43)	25 (57)		Non-M1	22 (44)	28 (56)	
M2	8 (33)	16 (67)	1.0000	M2	14 (42)	19 (58)	0.5279
Non-M2	27 (36)	48 (64)		Non-M2	27 (36)	48 (64)	
M3	12 (32)	26 (68)	0.3939	M3	13 (33)	26 (67)	0.5360
Non-M3	25 (42)	35 (58)		Non-M3	28 (41)	40 (59)	
M4	13 (43)	17 (57)	0.6514	M4	16 (46)	19 (54)	0.2906
Non-M4	24 (36)	42 (64)		Non-M4	24 (34)	46 (66)	
M5	5 (63)	3 (37)	0.2561	M5	6 (50)	6 (50)	0.3660
Non-M5	35 (37)	60 (63)		Non-M5	35 (36)	61 (64)	
M6	5 (36)	9 (64)	1.0000	M6	3 (27)	8 (73)	0.5274
Non-M6	35 (39)	55 (61)		Non-M6	36 (39)	56 (61)	
M7	2 (50)	2 (50)	0.6335	M7	2 (67)	1 (33)	0.5572
Non-M7	39 (38)	65 (62)		Non-M7	38 (38)	63 (62)	

a. Fisher's exact test (uncorrected p value).

Recombinant haplotypes for MHC I or MHC II were excluded from analysis.

Ab high, ≥ 2 ng/ml; Ab low, < 2 ng/ml.

Table B panel I. Univariate analysis of the effects of MHC haplotypes on natural antibodies to SIV PCS12.

MHC I haplotype	No.(%) of monkeys		P value ^a	MHC II haplotype	No.(%) of monkeys		P value ^a
	Ab high	Ab low			Ab high	Ab low	
M1	8 (16)	42 (84)	0.6022	M1	8 (14)	50 (86)	0.1446
Non-M1	9 (20)	35 (80)		Non-M1	13 (26)	37 (74)	
M2	7 (29)	17 (71)	0.1319	M2	10 (30)	23 (70)	0.0691
Non-M2	11 (15)	64 (85)		Non-M2	11 (15)	64 (85)	
M3	6 (16)	32 (84)	0.7919	M3	9 (23)	30 (77)	0.4429
Non-M3	11 (18)	49 (82)		Non-M3	11 (16)	57 (84)	
M4	4 (13)	26 (87)	0.5703	M4	6 (17)	29 (83)	0.7965
Non-M4	13 (20)	53 (80)		Non-M4	15 (21)	55 (79)	
M5	1 (13)	7 (87)	1.0000	M5	2 (17)	10 (83)	1.0000
Non-M5	19 (20)	76 (80)		Non-M5	19 (20)	77 (80)	
M6	4 (29)	10 (71)	0.4637	M6	3 (27)	8 (73)	0.4430
Non-M6	16 (18)	74 (82)		Non-M6	17 (18)	75 (82)	
M7	1 (25)	3 (75)	1.0000	M7	1 (33)	2 (67)	0.4954
Non-M7	20 (19)	84 (81)		Non-M7	20 (20)	81 (80)	

a. Fisher's exact test (uncorrected p value).

Recombinant haplotypes for MHC I or MHC II were excluded from analysis.

Ab high, ≥ 2 ng/ml; Ab low, < 2 ng/ml.

Table B panel m. Univariate analysis of the effects of MHC haplotypes on natural antibodies to SIVgag.

MHC I haplotype	No.(%) of monkeys		P value ^a	MHC II haplotype	No.(%) of monkeys		P value ^a
	Ab high	Ab low			Ab high	Ab low	
M1	6 (12)	44 (88)	0.1828	M1	7 (12)	51 (88)	0.0829
Non-M1	10 (23)	34 (77)		Non-M1	13 (26)	37 (74)	
M2	6 (25)	18 (75)	0.3495	M2	9 (27)	24 (73)	0.1771
Non-M2	11 (15)	64 (85)		Non-M2	11 (15)	64 (85)	
M3	5 (13)	33 (87)	0.4228	M3	7 (18)	32 (82)	1.0000
Non-M3	13 (22)	47 (78)		Non-M3	13 (19)	55 (81)	
M4	7 (23)	23 (77)	0.5732	M4	8 (23)	27 (77)	0.5989
Non-M4	11 (17)	55 (83)		Non-M4	12 (17)	58 (83)	
M5	3 (38)	5 (62)	0.1623	M5	4 (33)	8 (67)	0.2294
Non-M5	16 (17)	79 (83)		Non-M5	16 (17)	80 (83)	
M6	3 (21)	11 (79)	0.7171	M6	2 (18)	9 (82)	1.0000
Non-M6	16 (18)	74 (82)		Non-M6	17 (18)	75 (82)	
M7	0 (0)	4 (100)	1.0000	M7	0 (0)	3 (100)	1.0000
Non-M7	20 (19)	84 (81)		Non-M7	20 (20)	81 (80)	

a. Fisher's exact test (uncorrected p value).

Recombinant haplotypes for MHC I or MHC II were excluded from analysis.

Ab high, ≥ 2 ng/ml; Ab low, < 2 ng/ml.

Table B panel n. Univariate analysis of the effects of MHC haplotypes on natural antibodies to SIVenv1.

MHC I haplotype	No.(%) of monkeys		P value ^a	MHC II haplotype	No.(%) of monkeys		P value ^a
	Ab high	Ab low			Ab high	Ab low	
M1	18 (36)	32 (64)	1.0000	M1	18 (31)	40 (69)	0.3153
Non-M1	15 (34)	29 (66)		Non-M1	21 (42)	29 (58)	
M2	8 (33)	16 (67)	0.3579	M2	13 (39)	20 (61)	0.6679
Non-M2	28 (37)	47 (63)		Non-M2	26 (35)	49 (65)	
M3	16 (42)	22 (58)	0.3982	M3	15 (38)	24 (62)	0.6776
Non-M3	20 (33)	40 (67)		Non-M3	23 (34)	45 (66)	
M4	8 (27)	22 (73)	0.2529	M4	12 (34)	23 (66)	0.8306
Non-M4	27 (41)	39 (59)		Non-M4	27 (39)	43 (61)	
M5	4 (50)	4 (50)	0.4534	M5	6 (50)	6 (50)	0.3449
Non-M5	33 (35)	62 (65)		Non-M5	33 (34)	63 (66)	
M6	7 (50)	7 (50)	0.3711	M6	5 (45)	6 (55)	0.5289
Non-M6	31 (34)	59 (66)		Non-M6	33 (36)	59 (64)	
M7	0 (0)	4 (100)	0.2943	M7	0 (0)	3 (100)	0.2900
Non-M7	39 (38)	65 (62)		Non-M7	39 (39)	62 (61)	

a. Fisher's exact test (uncorrected p value).

Recombinant haplotypes for MHC I or MHC II were excluded from analysis.

Ab high, ≥ 2 ng/ml; Ab low, < 2 ng/ml.

Table B panel o. Univariate analysis of the effects of MHC haplotypes on natural antibodies to SIVenv2.

MHC I haplotype	No.(%) of monkeys		P value ^a	MHC II haplotype	No.(%) of monkeys		P value ^a
	Ab high	Ab low			Ab high	Ab low	
M1	20 (40)	30 (60)	0.5109	M1	25 (43)	33 (57)	1.0000
Non-M1	18 (41)	26 (59)		Non-M1	21 (42)	29 (58)	
M2	11 (46)	13 (54)	0.8164	M2	15 (45)	18 (55)	0.8350
Non-M2	32 (43)	43 (57)		Non-M2	32 (43)	43 (57)	
M3	16 (42)	22 (58)	1.0000	M3	13 (33)	26 (67)	0.2291
Non-M3	25 (42)	35 (58)		Non-M3	31 (46)	37 (54)	
M4	12 (40)	18 (60)	0.8249	M4	14 (40)	21 (60)	0.5369
Non-M4	29 (44)	37 (56)		Non-M4	33 (47)	37 (53)	
M5	3 (38)	5 (62)	1.0000	M5	5 (42)	7 (58)	1.0000
Non-M5	42 (44)	53 (56)		Non-M5	42 (44)	54 (56)	
M6	7 (50)	7 (50)	0.7742	M6	6 (55)	5 (45)	0.5343
Non-M6	39 (43)	51 (57)		Non-M6	40 (43)	52 (57)	
M7	1 (25)	3 (75)	0.6274	M7	1 (33)	2 (67)	1.0000
Non-M7	47 (45)	57 (55)		Non-M7	46 (46)	55 (54)	

a. Fisher's exact test (uncorrected p value).

Recombinant haplotypes for MHC I or MHC II were excluded from analysis.

Ab high, ≥ 2 ng/ml; Ab low, < 2 ng/ml.