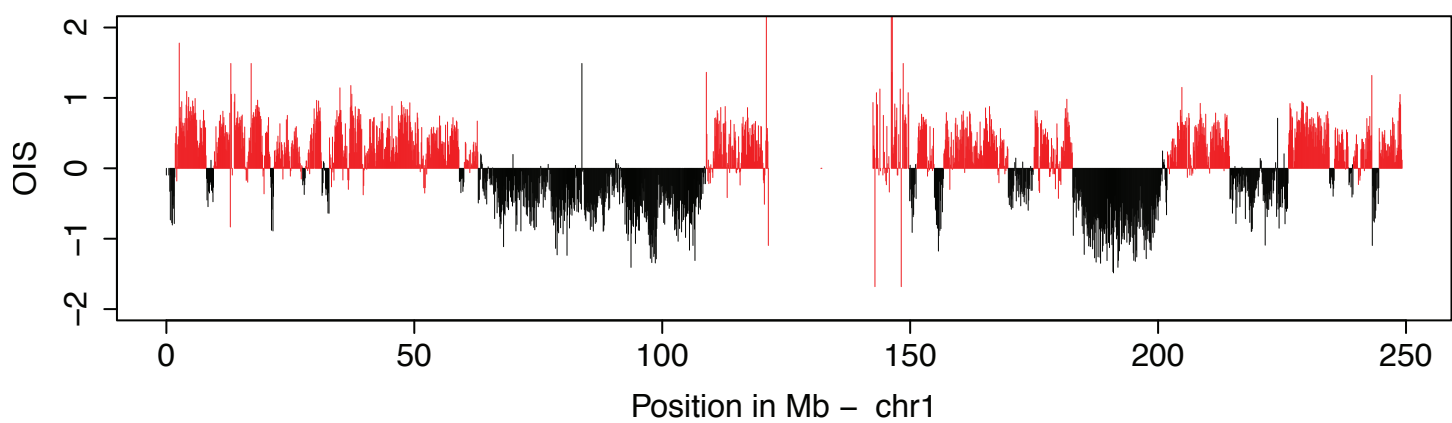
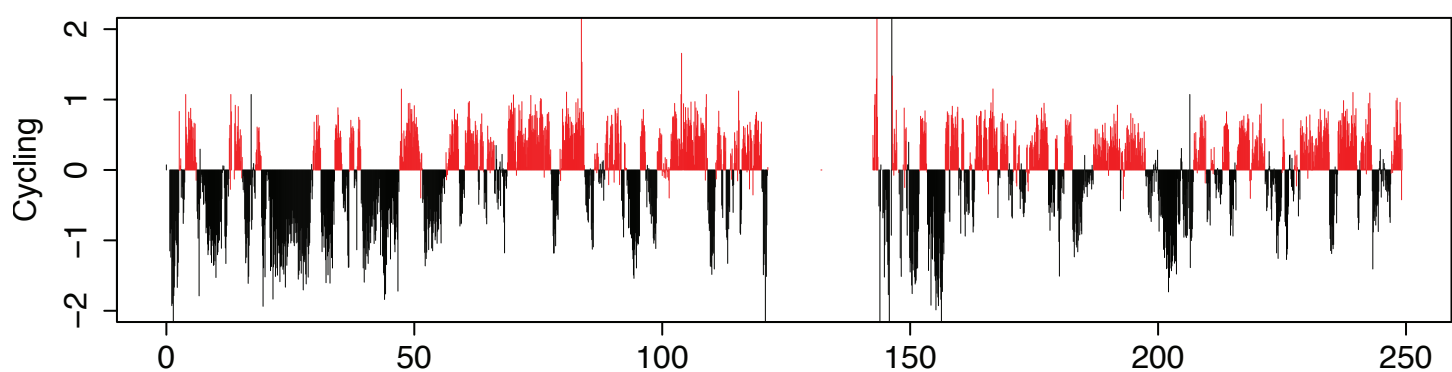
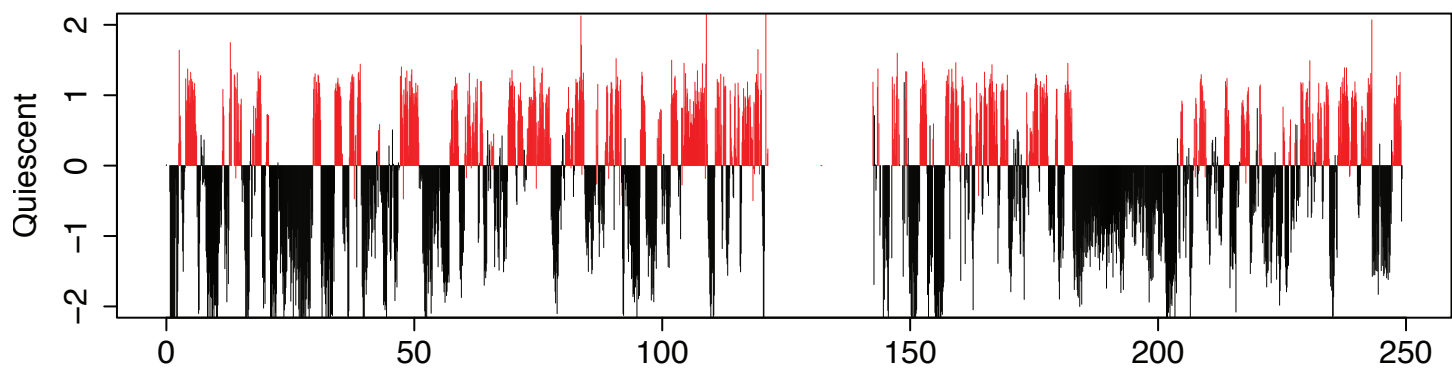
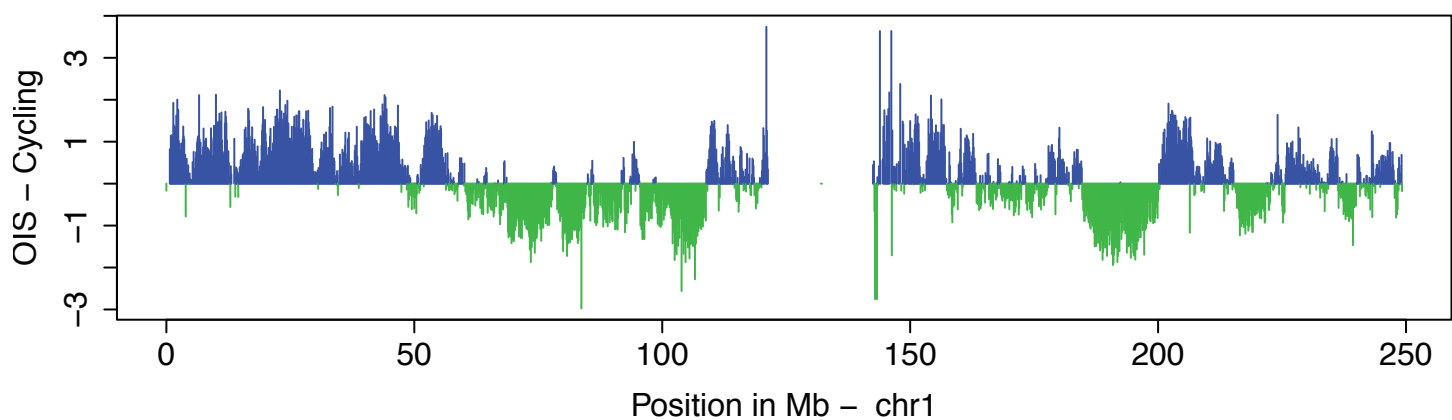


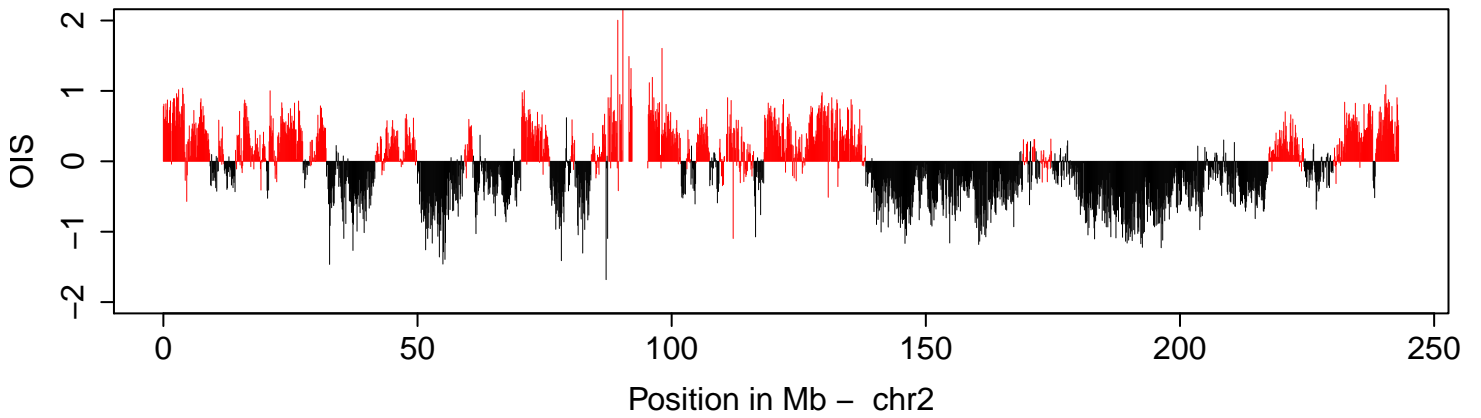
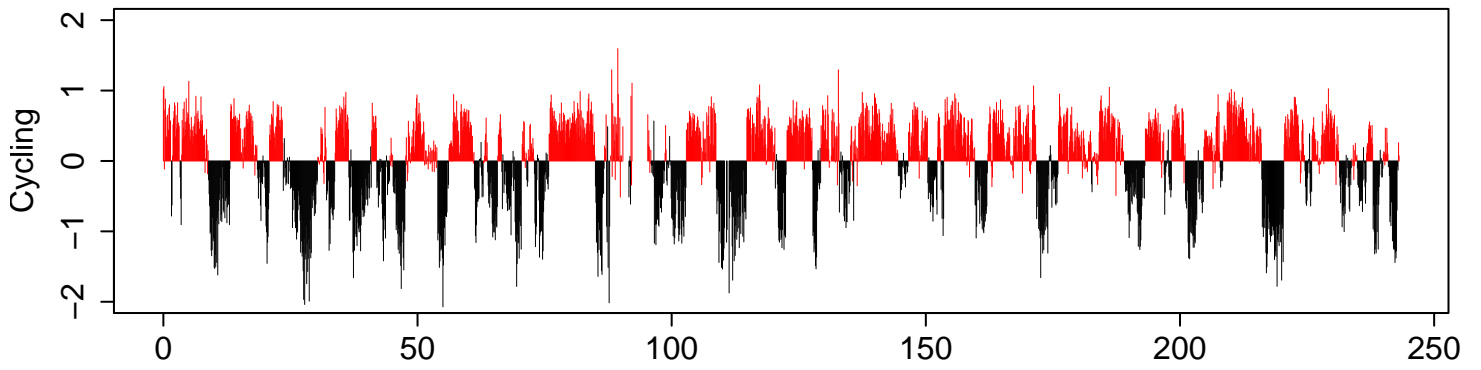
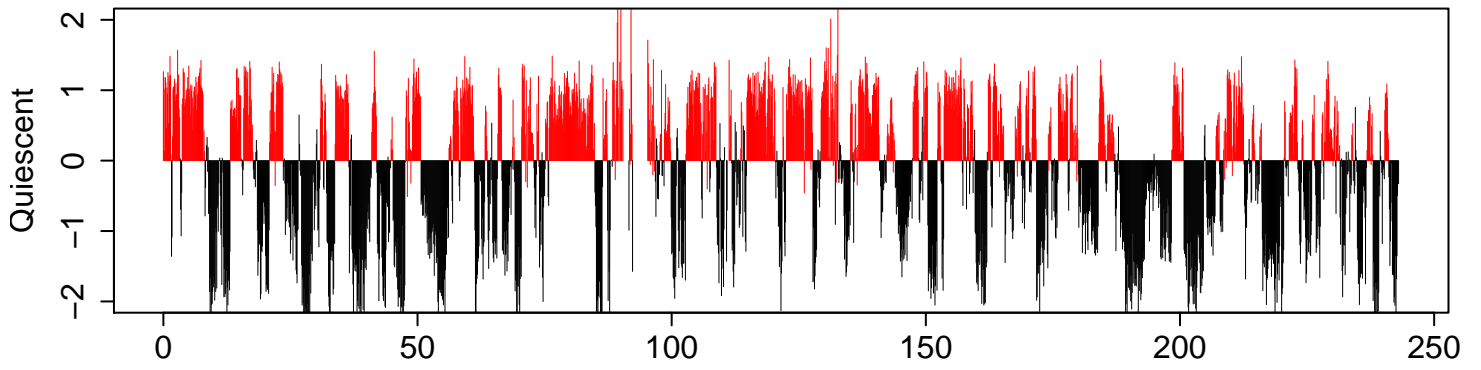
LMNB1 interaction (log2)



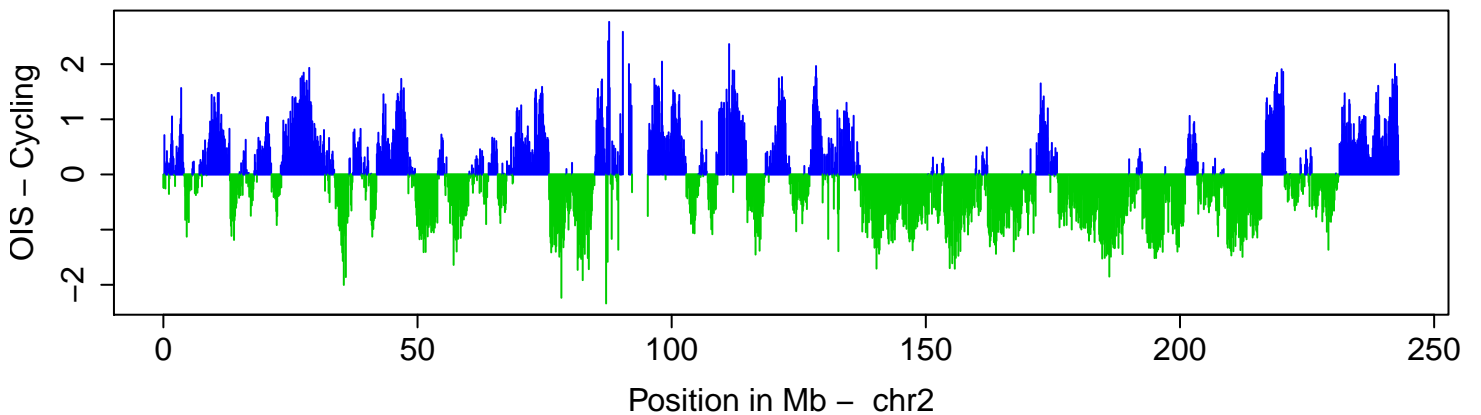
Change LMNB1 Interaction



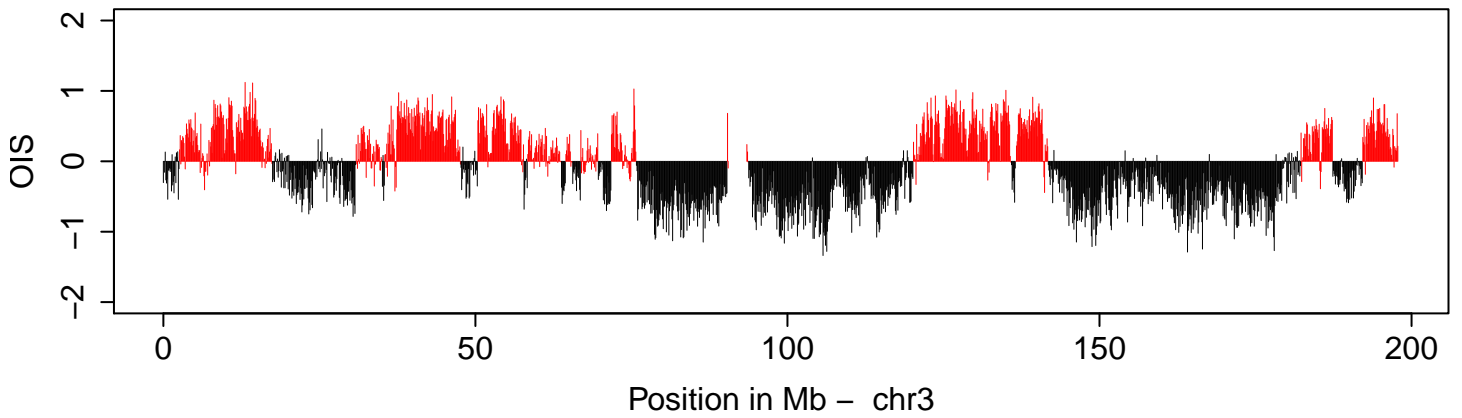
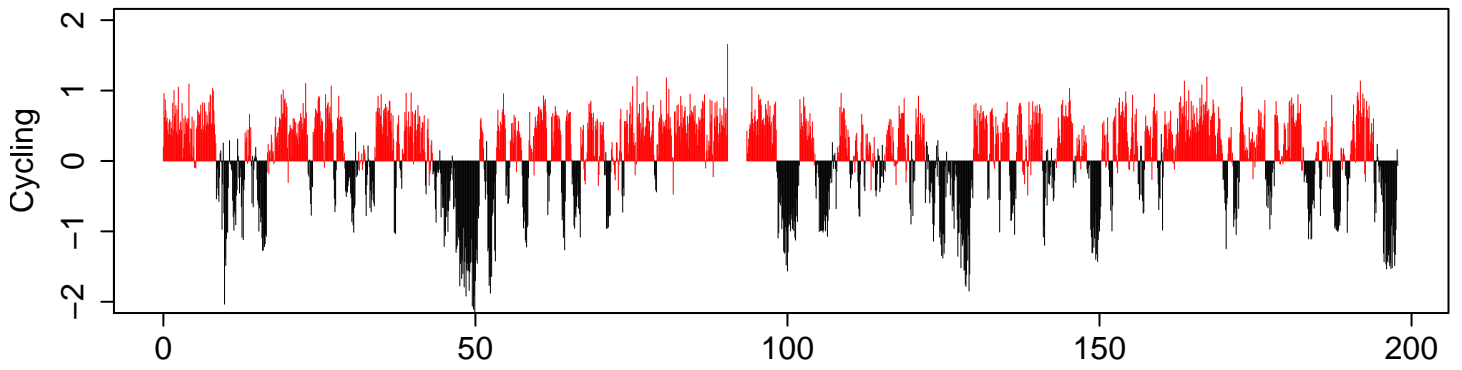
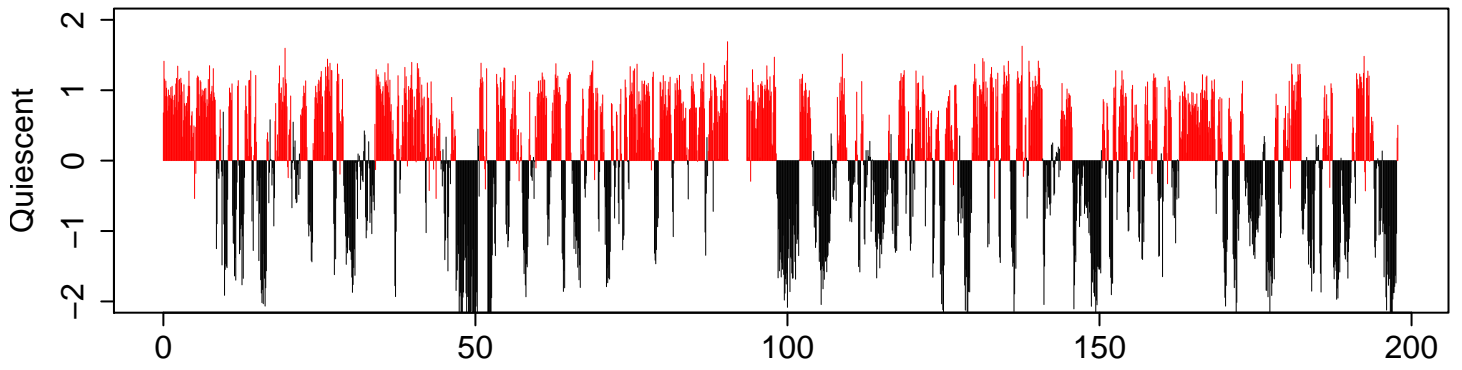
LMNB1 interaction (log2)



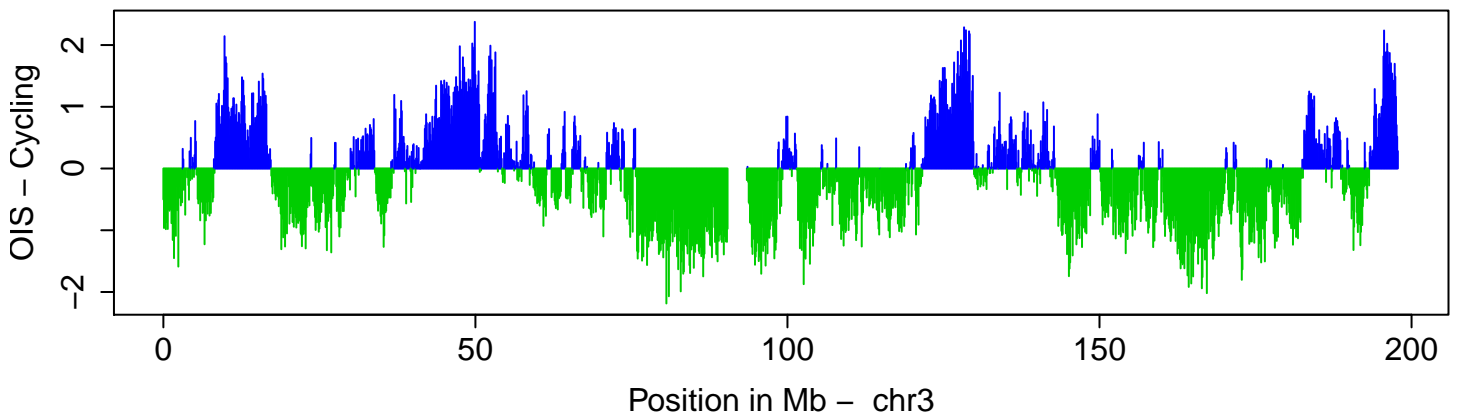
Change LMNB1 Interaction



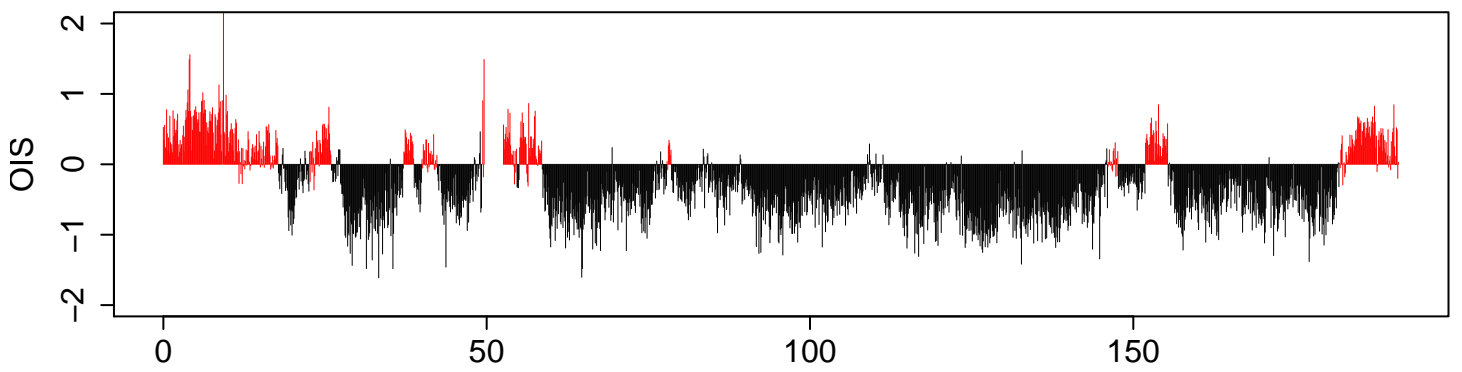
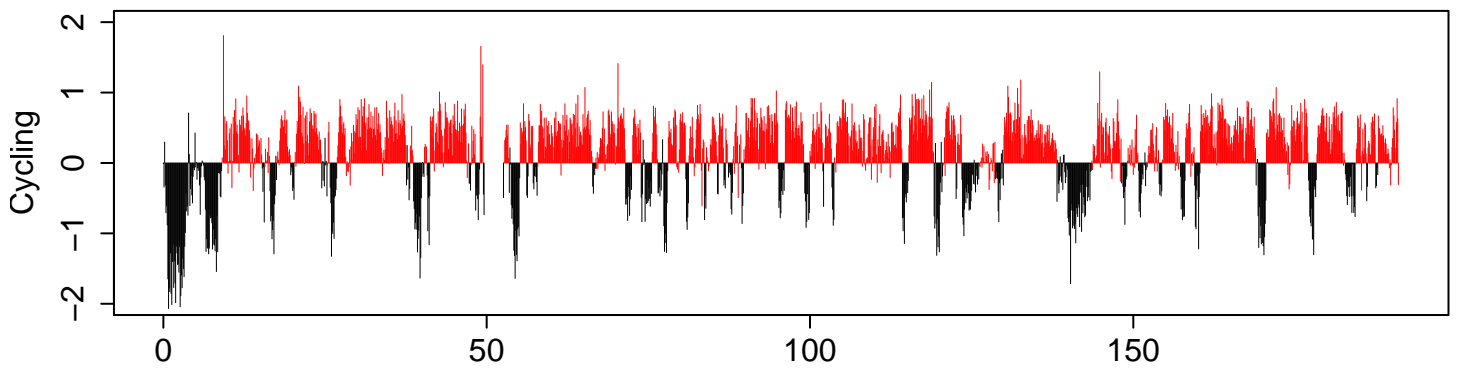
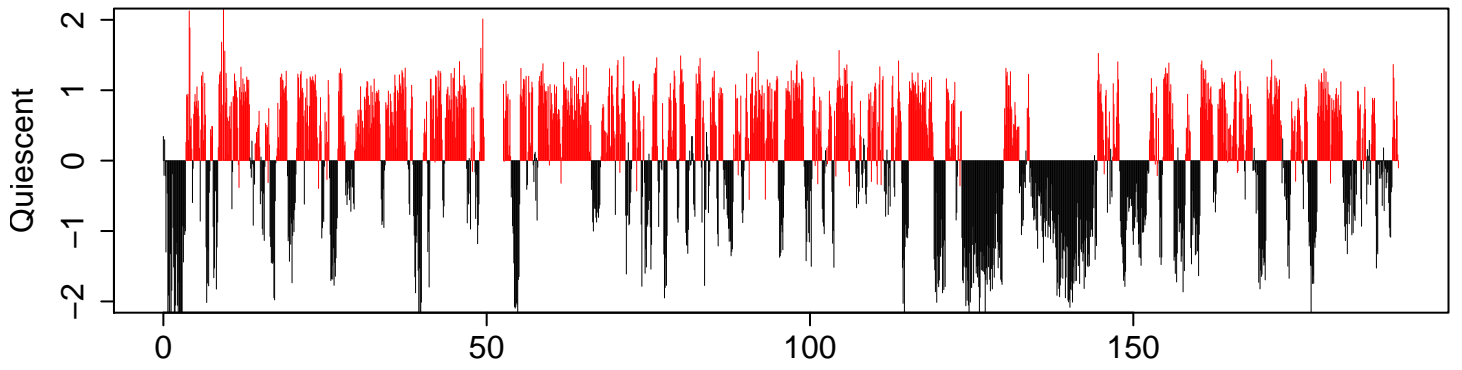
LMNB1 interaction (log2)



Change LMNB1 Interaction

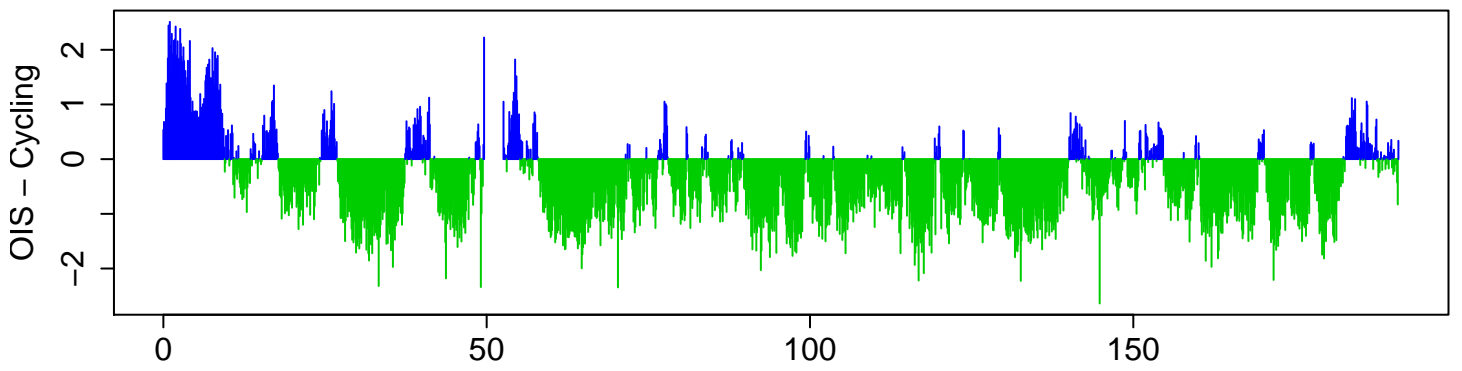


LMNB1 interaction (log2)



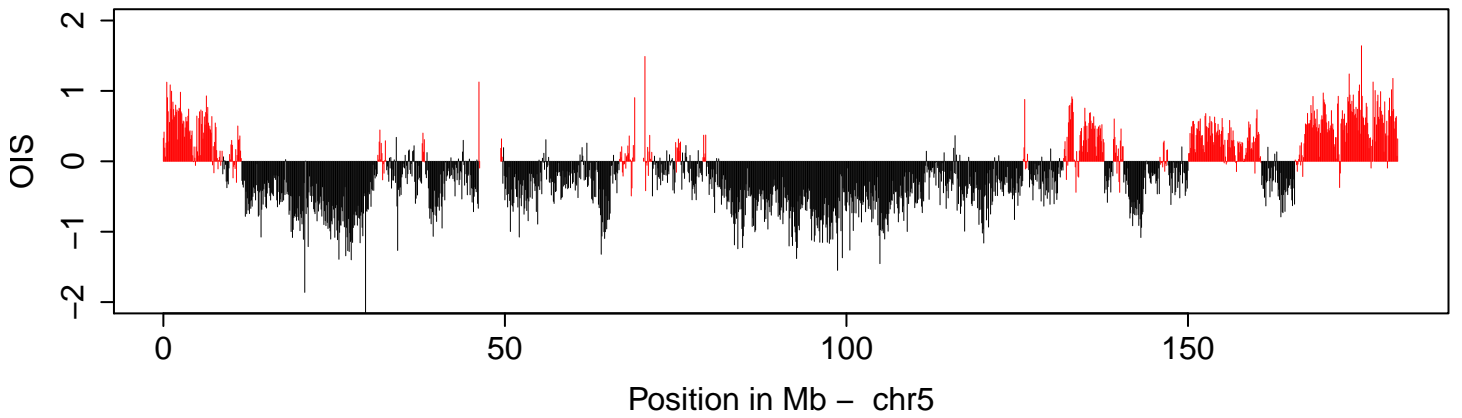
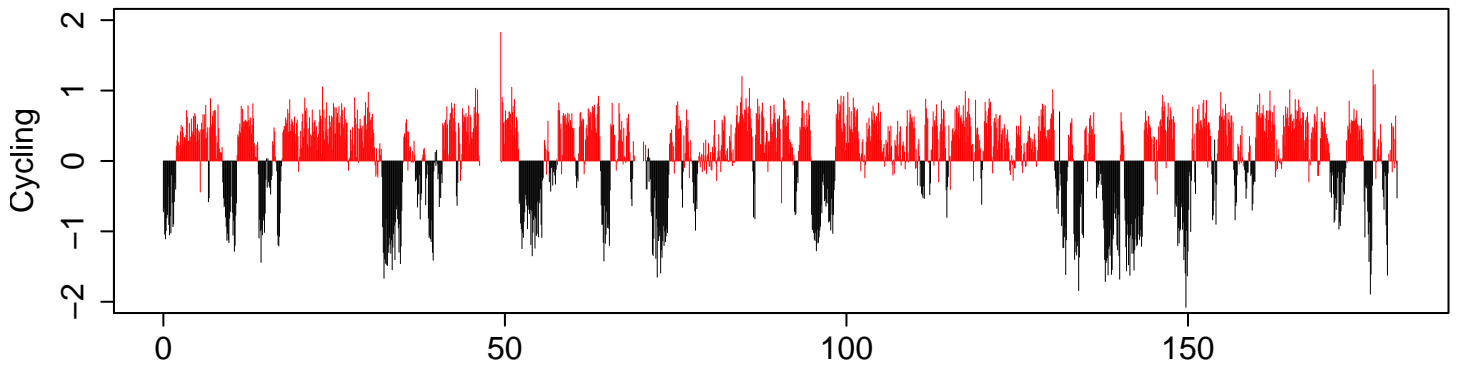
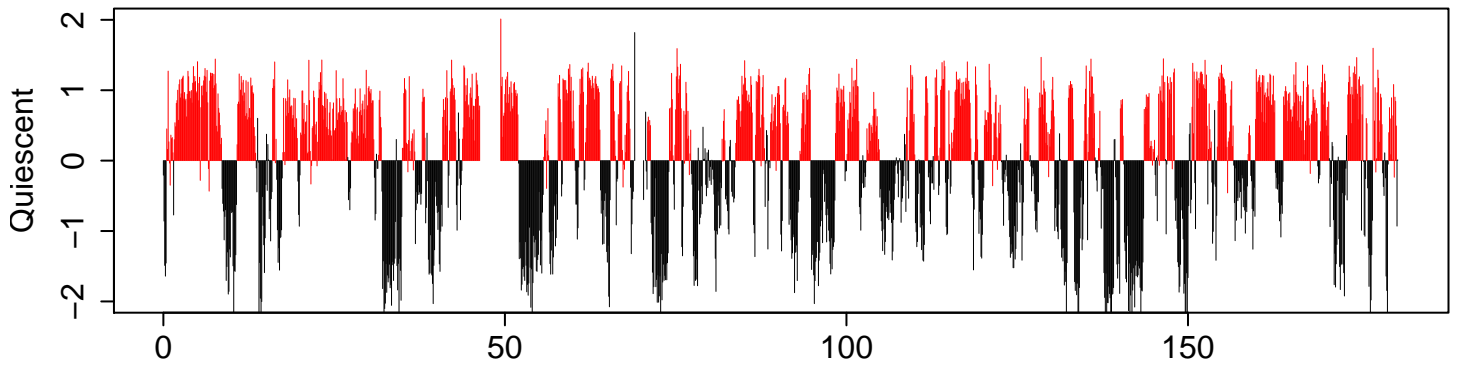
Position in Mb – chr4

Change LMNB1 Interaction

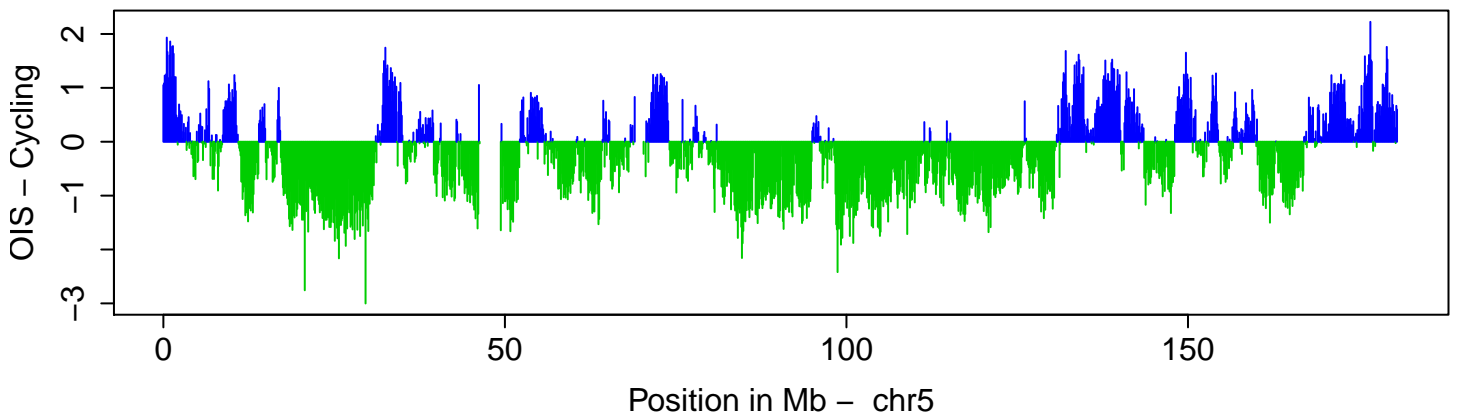


Position in Mb – chr4

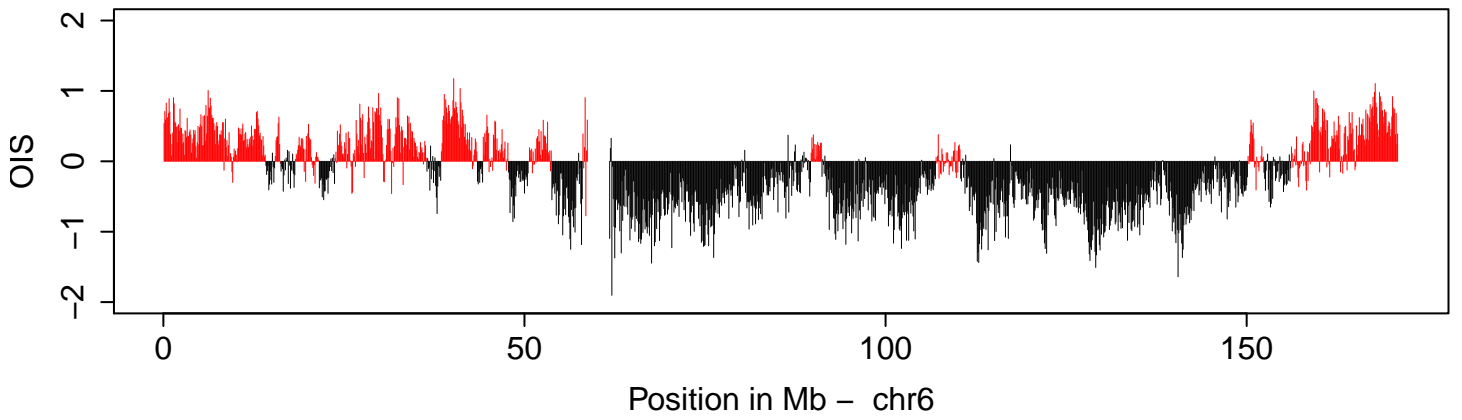
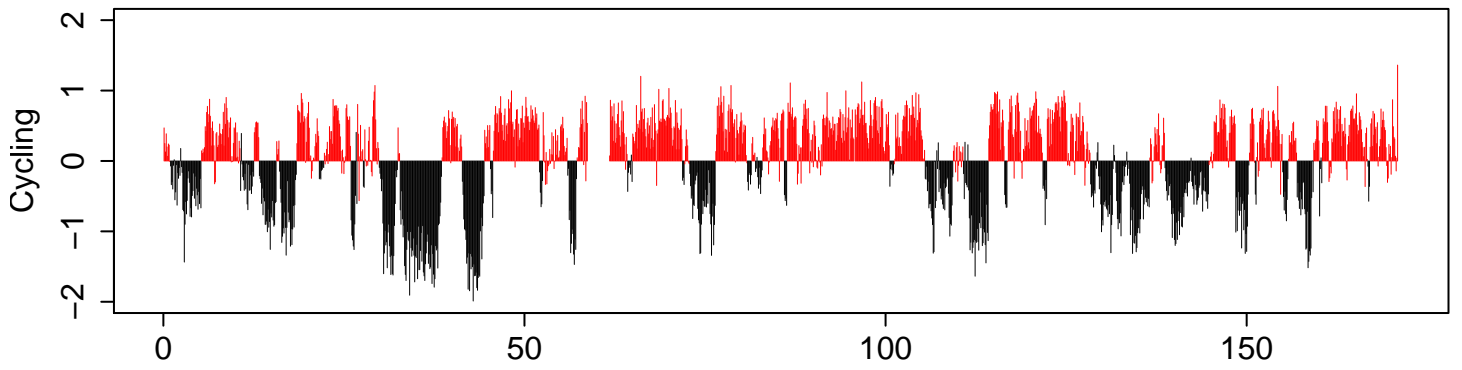
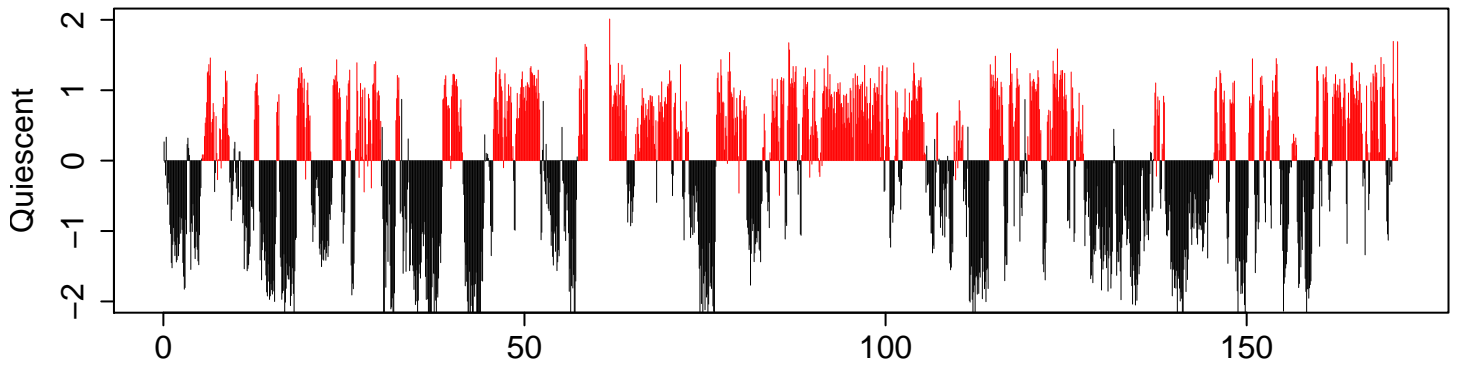
LMNB1 interaction (log2)



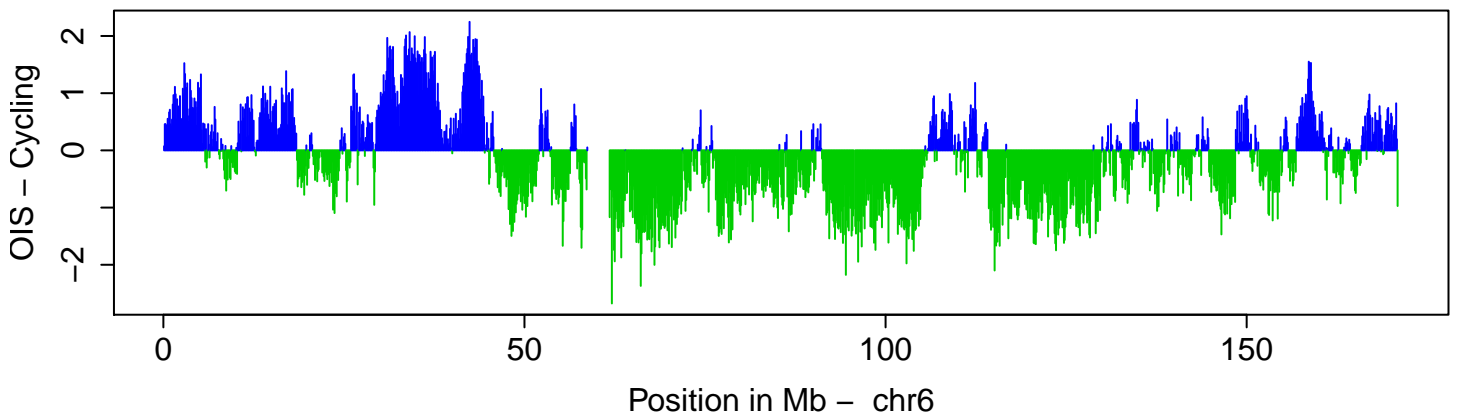
Change LMNB1 Interaction



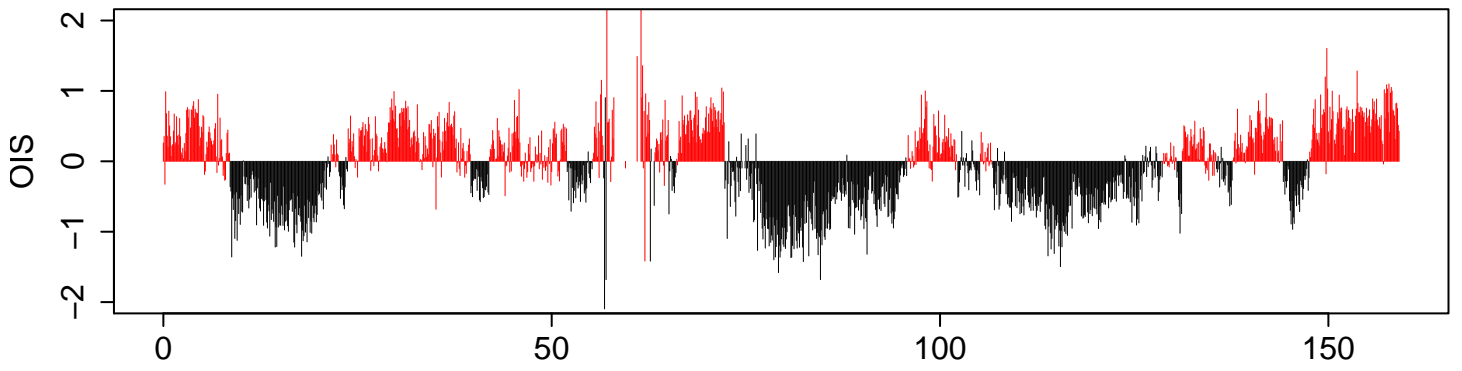
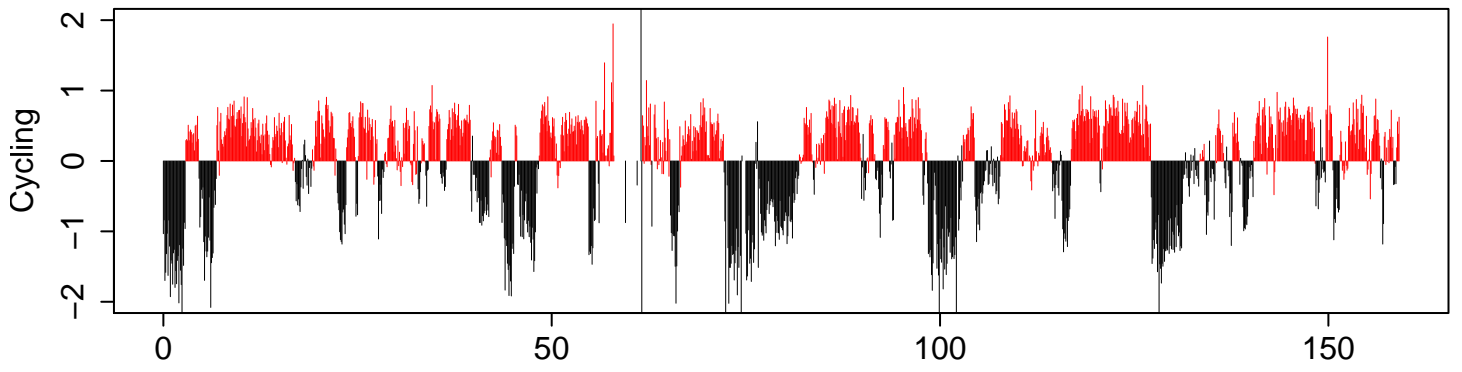
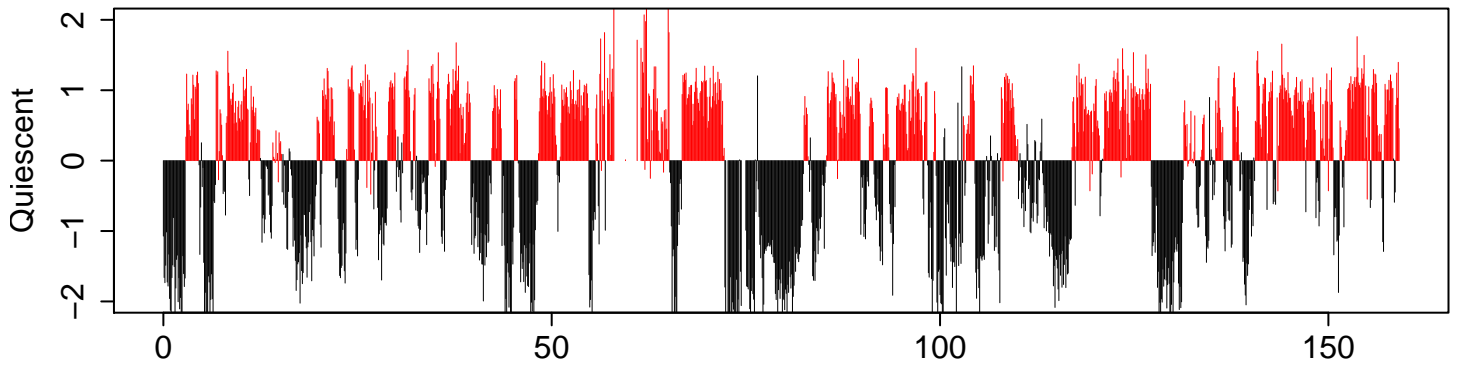
LMNB1 interaction (log2)



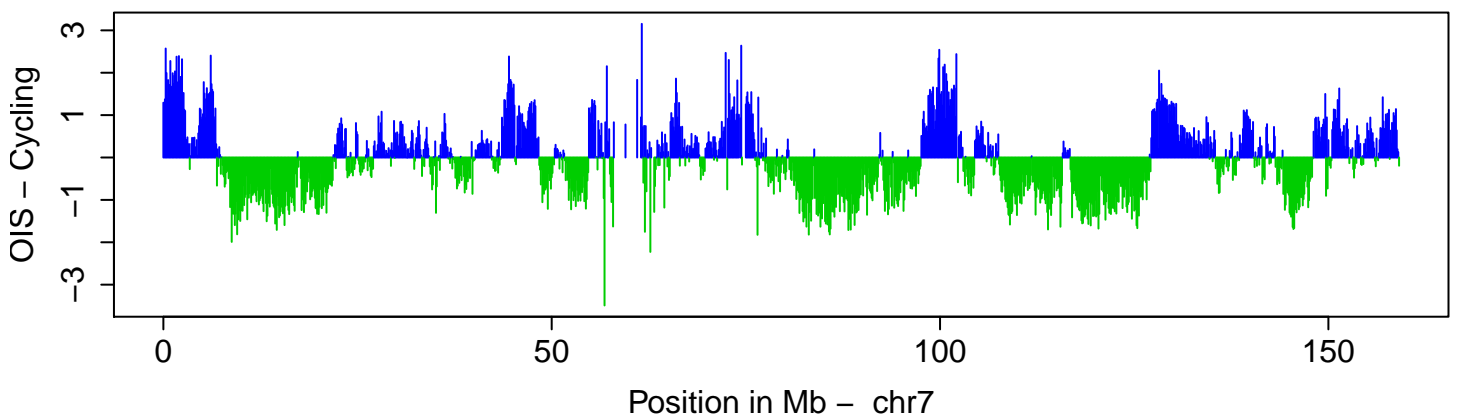
Change LMNB1 Interaction



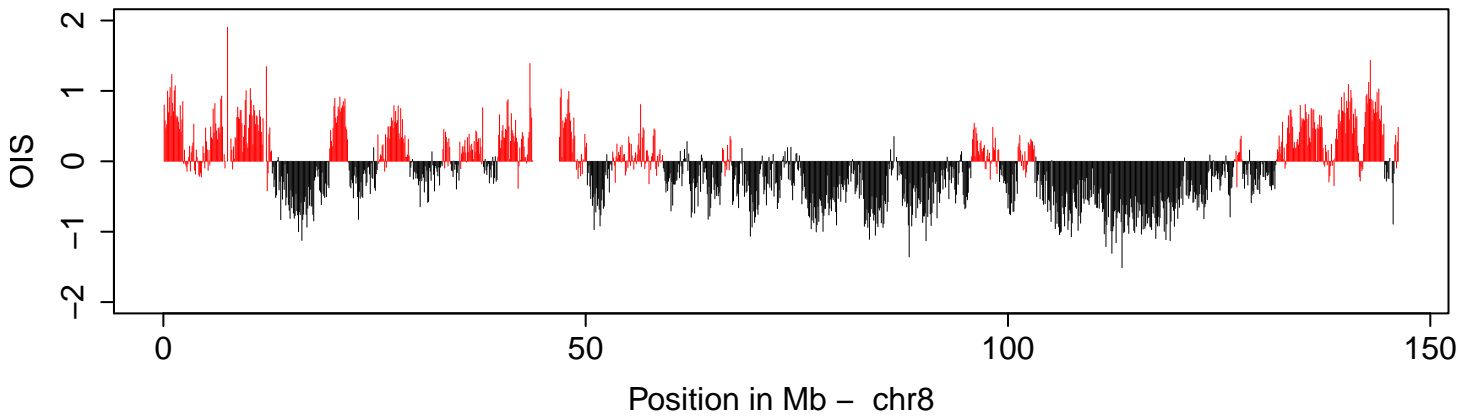
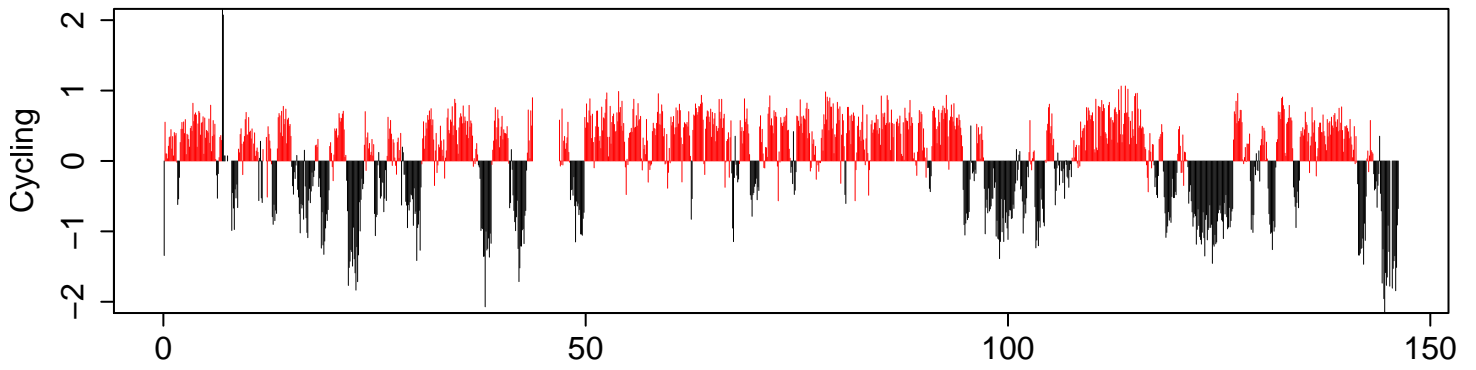
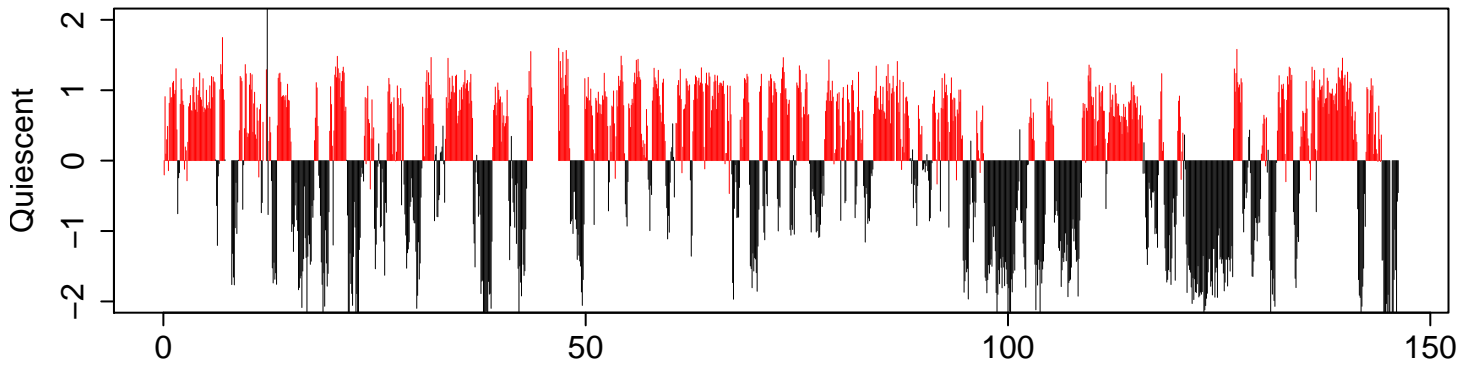
LMNB1 interaction (log2)



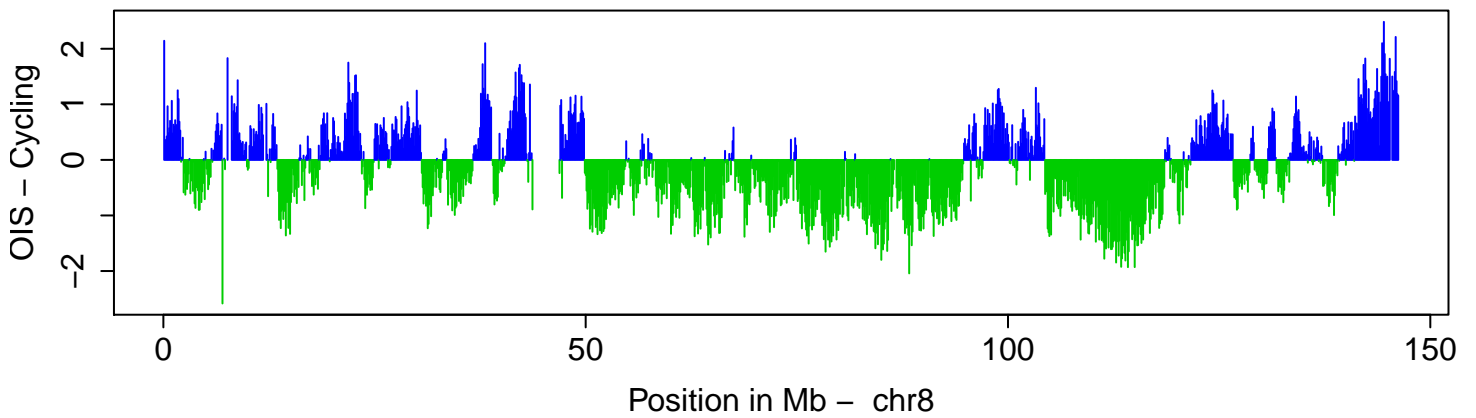
Change LMNB1 Interaction



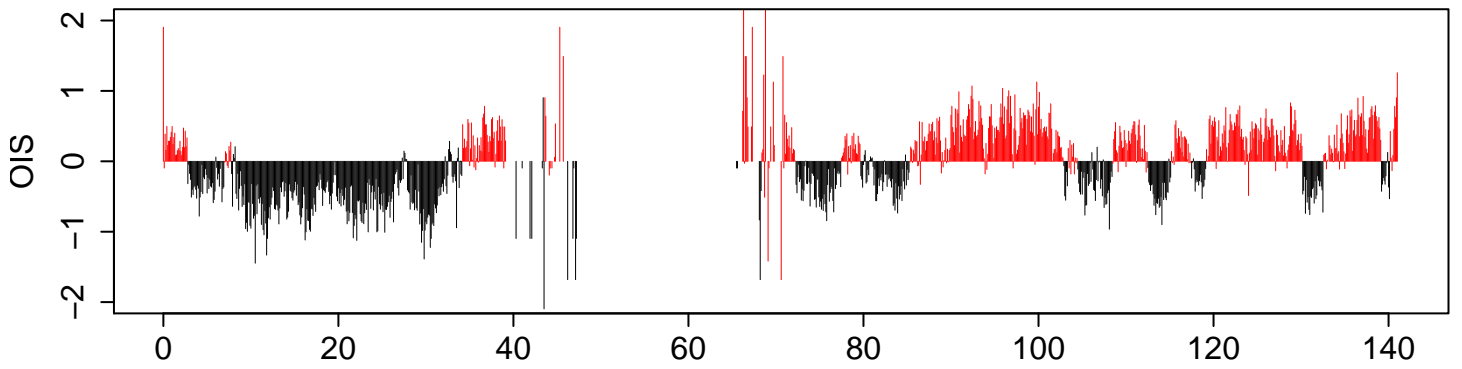
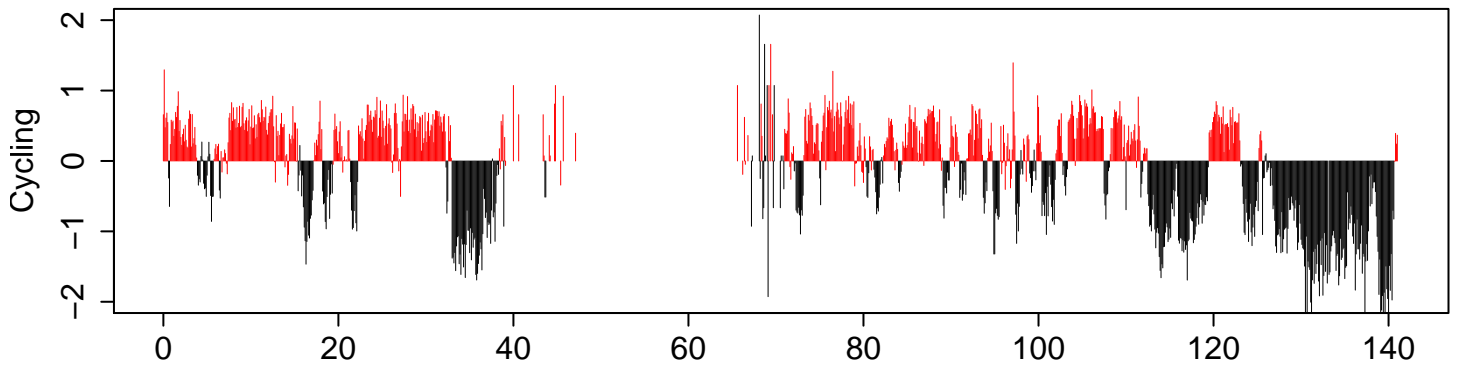
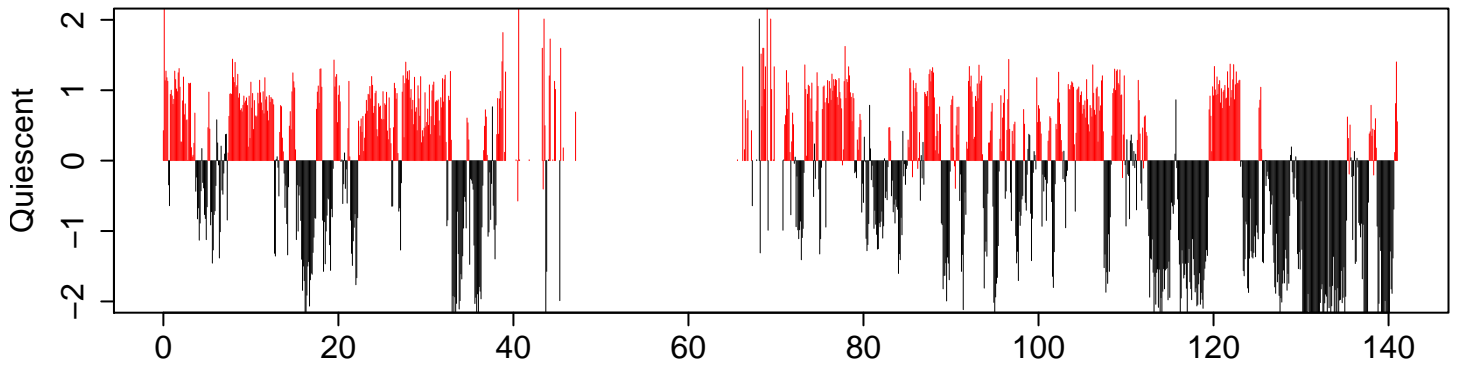
LMNB1 interaction (log2)



Change LMNB1 Interaction

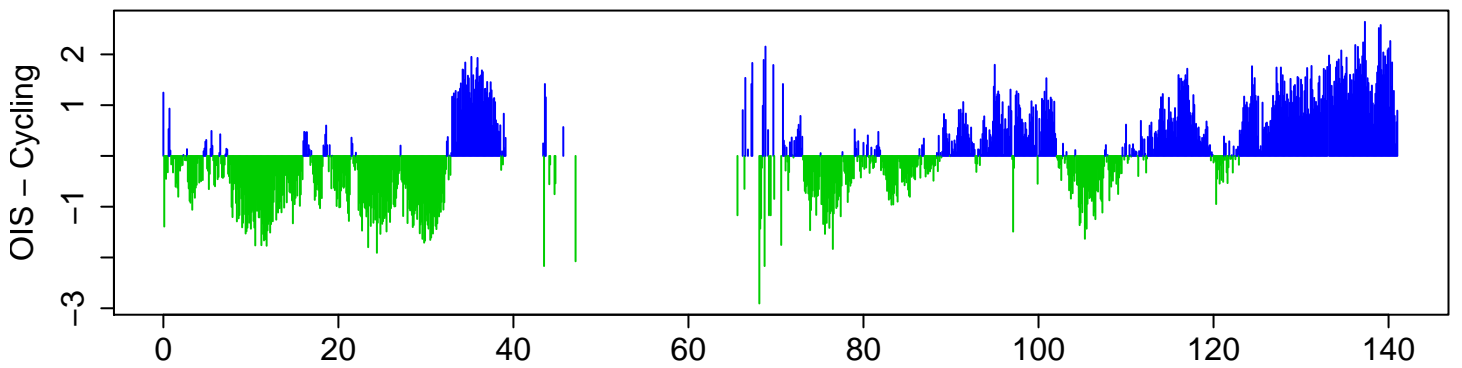


LMNB1 interaction (log2)



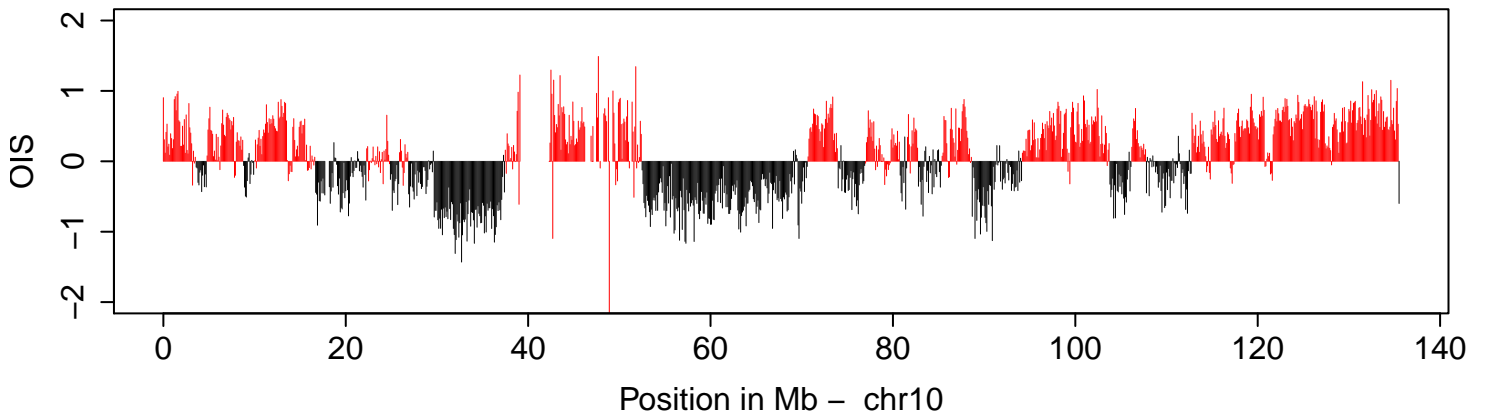
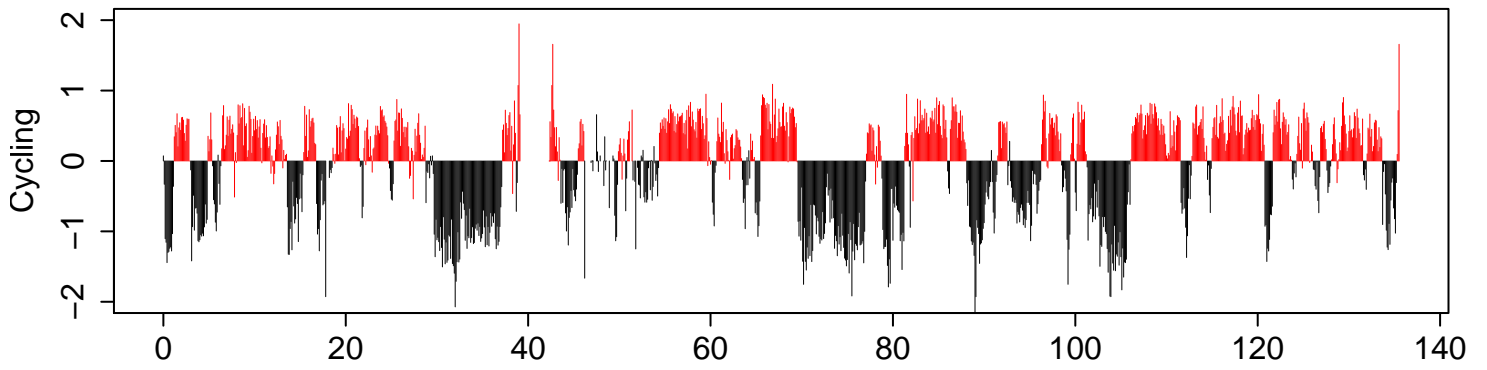
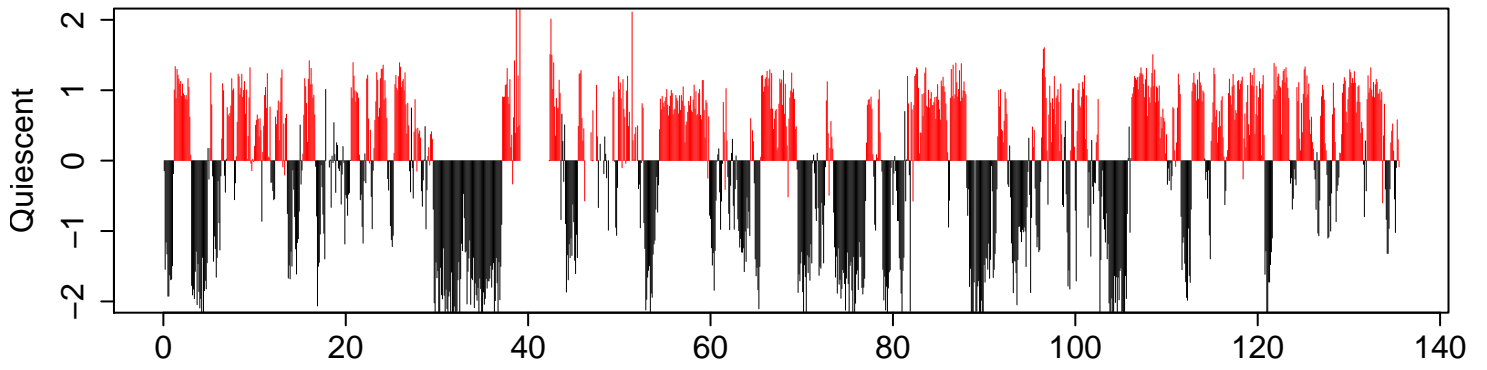
Position in Mb - chr9

Change LMNB1 Interaction

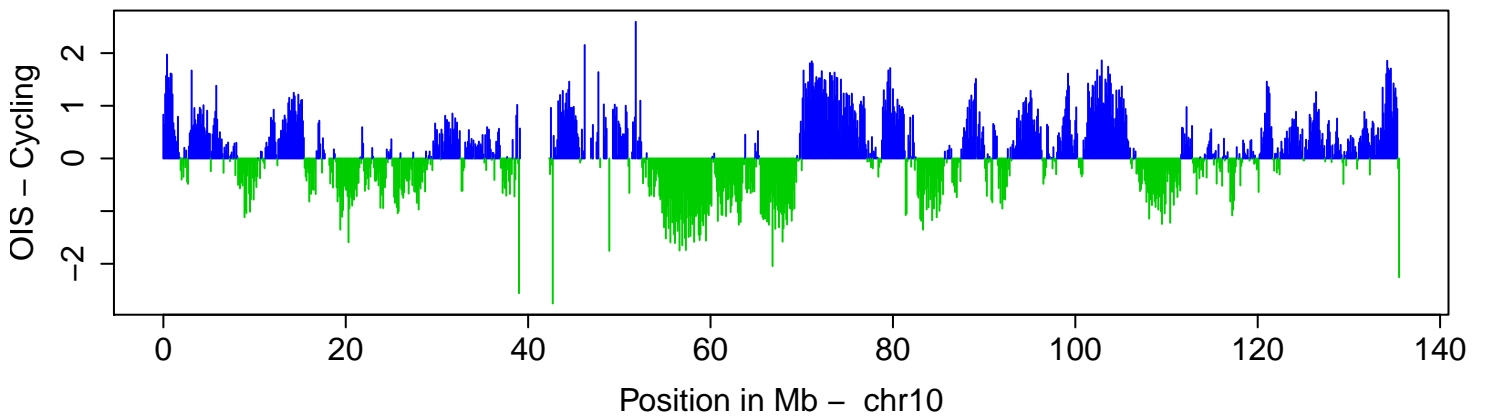


Position in Mb - chr9

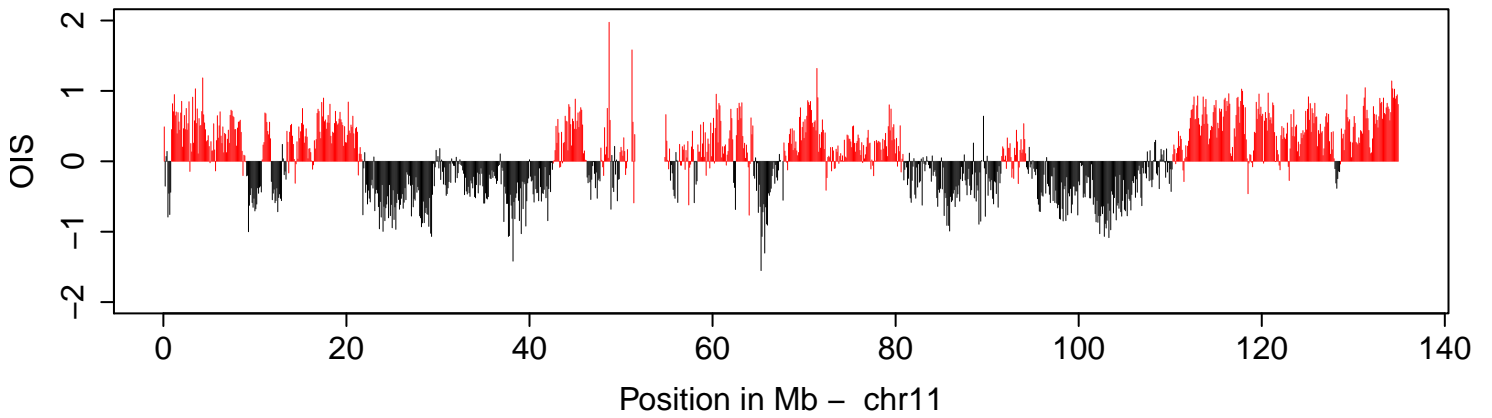
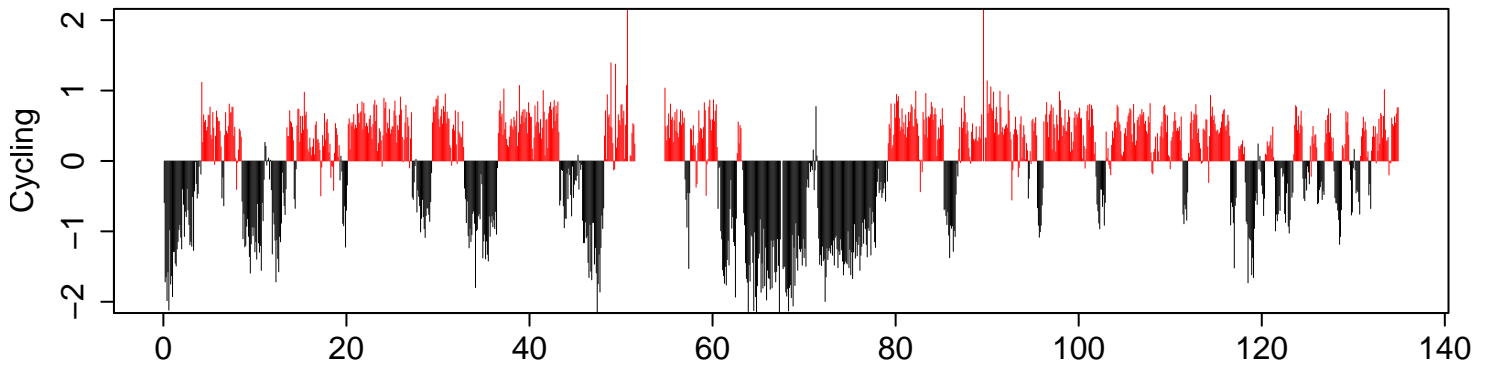
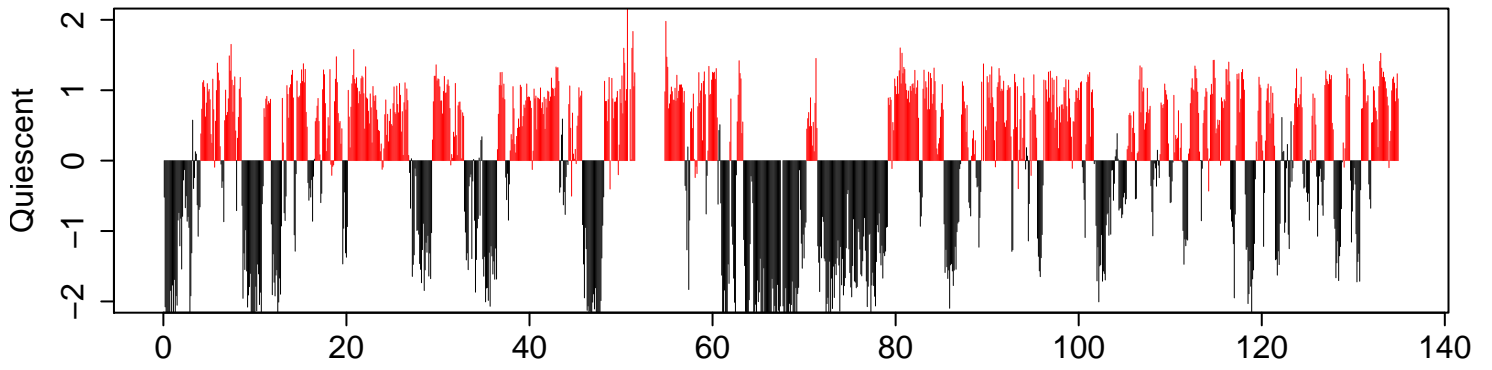
LMNB1 interaction (log2)



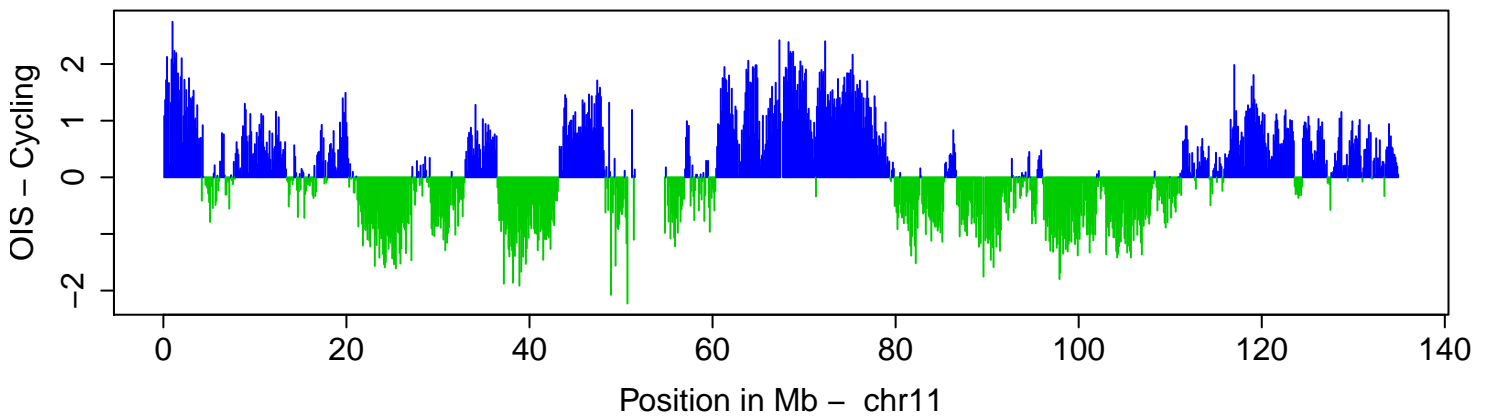
Change LMNB1 Interaction



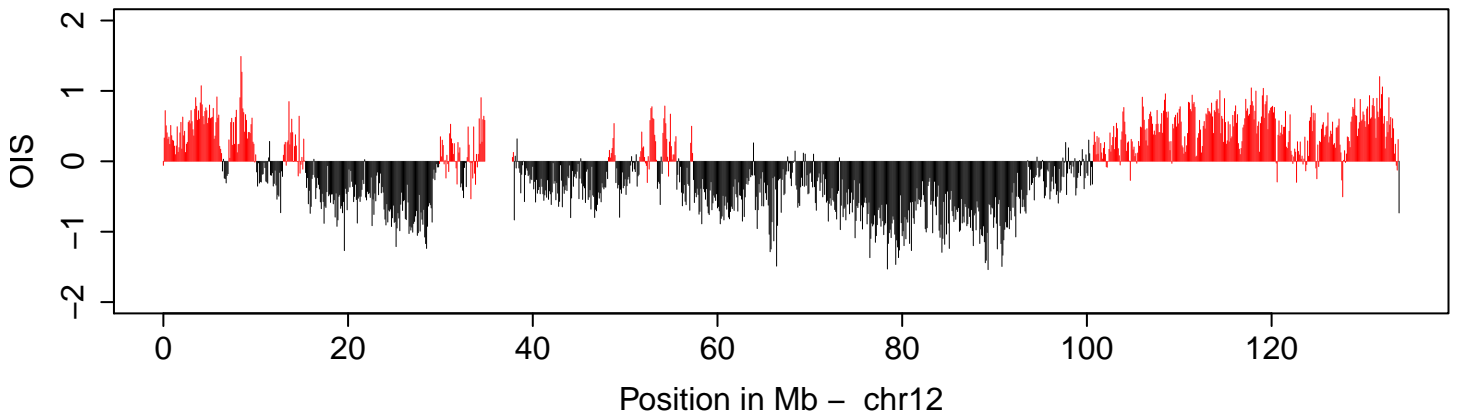
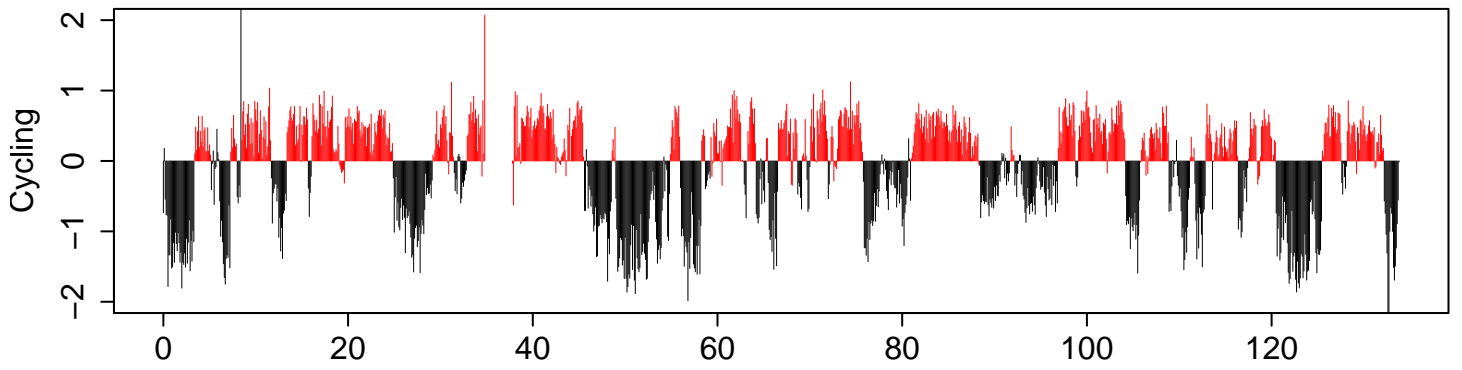
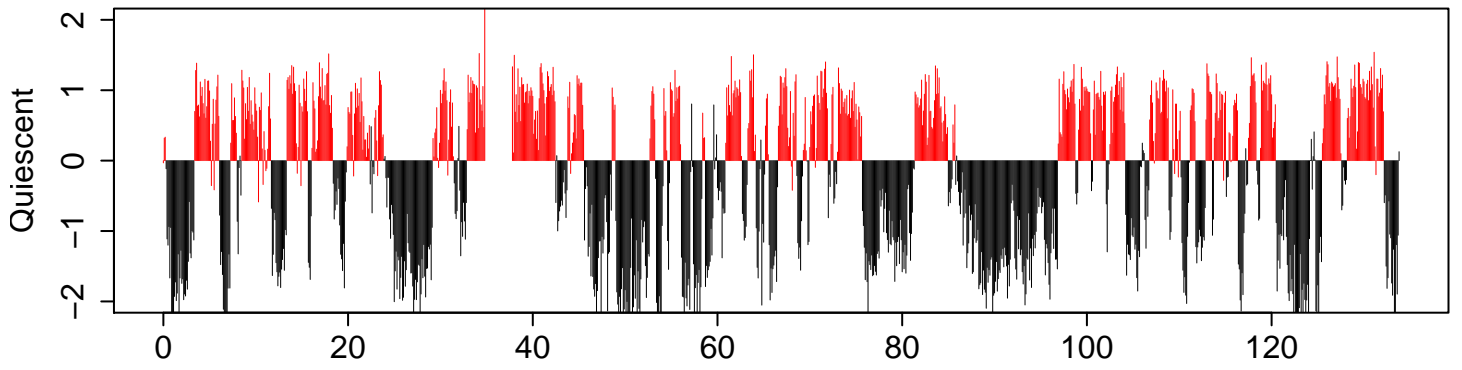
LMNB1 interaction (log2)



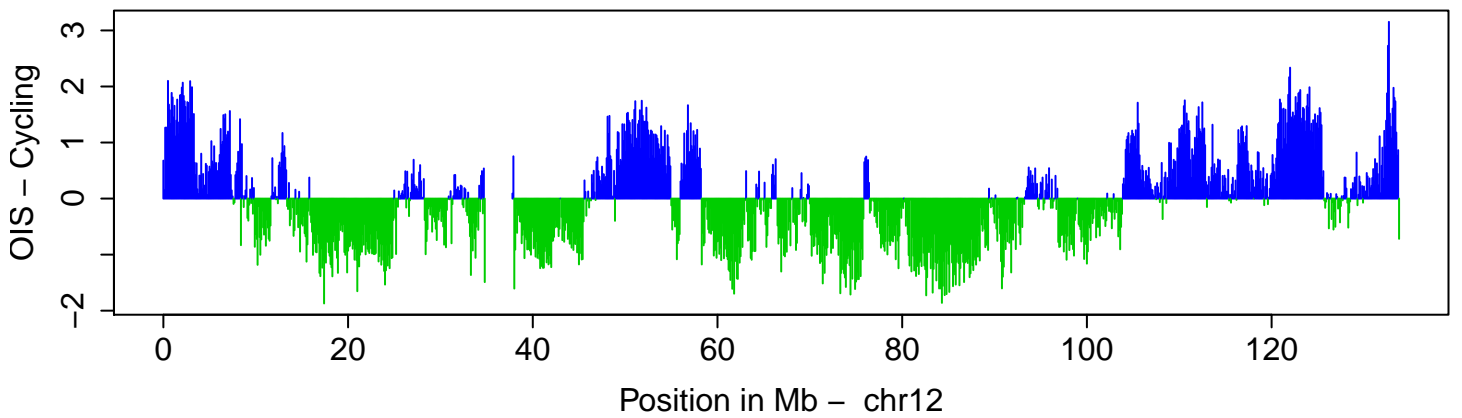
Change LMNB1 Interaction



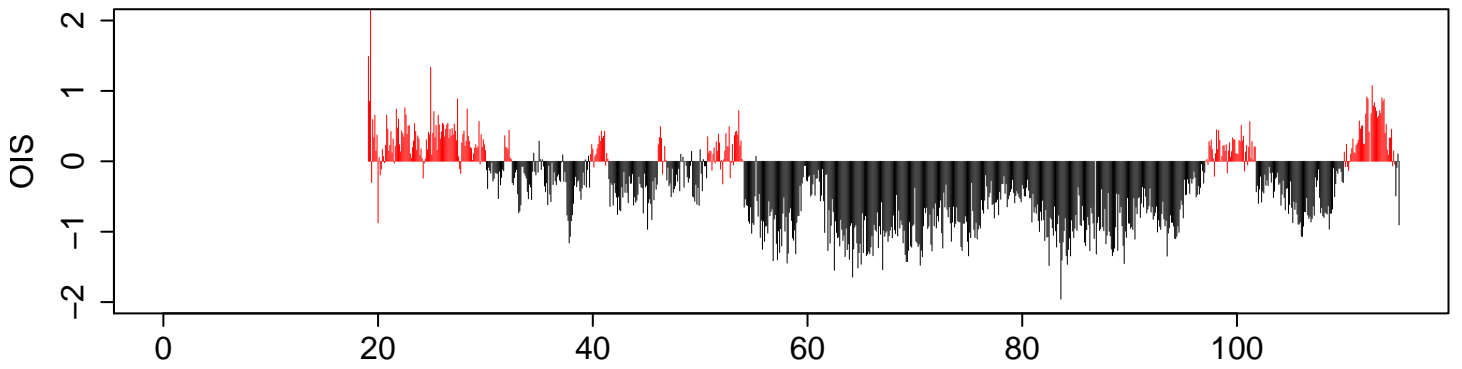
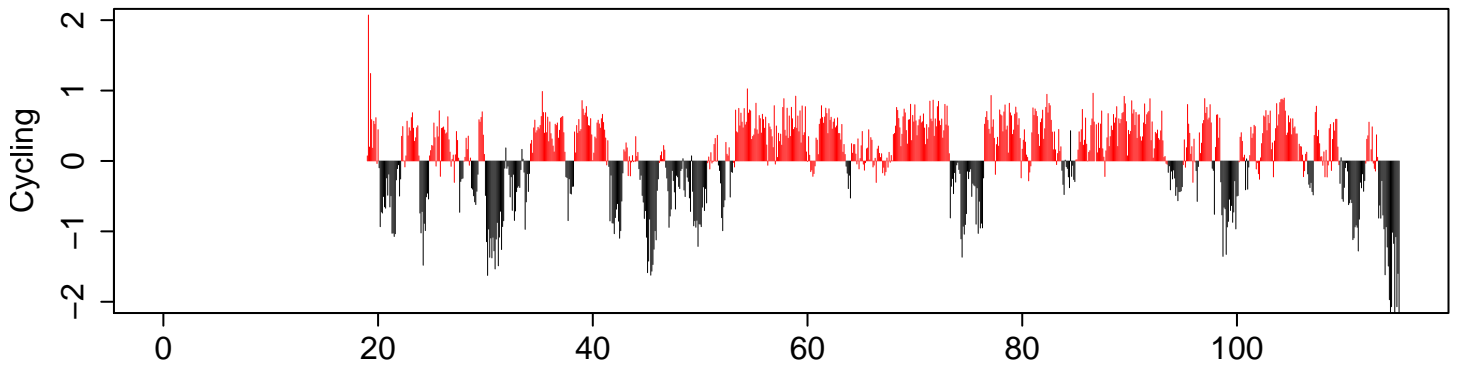
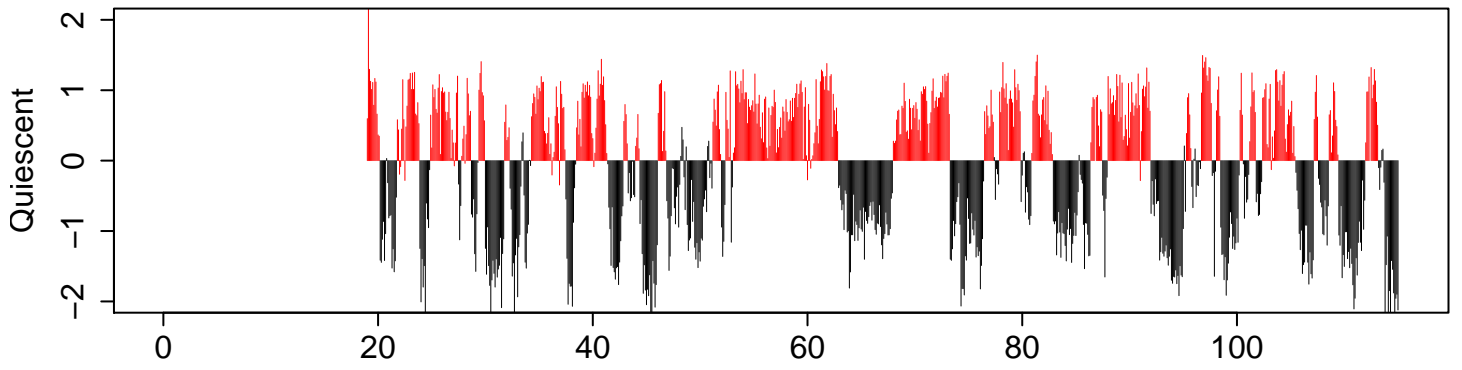
LMNB1 interaction (log2)



Change LMNB1 Interaction

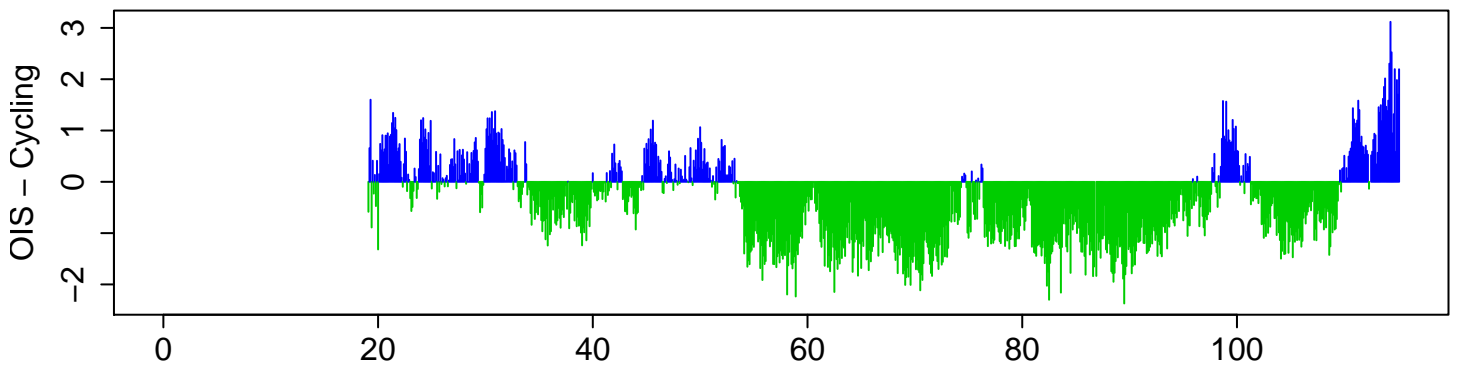


LMNB1 interaction (log2)



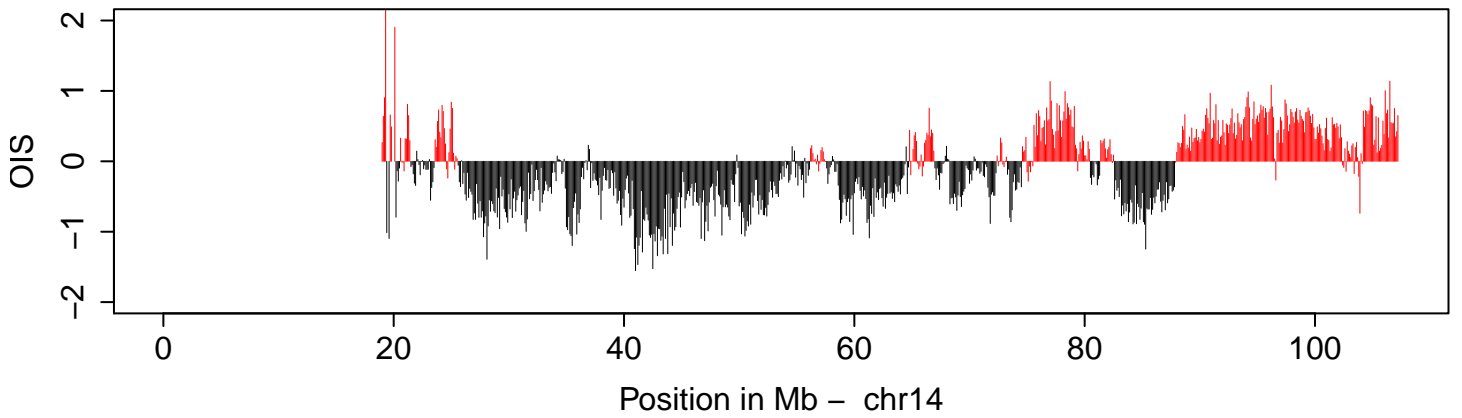
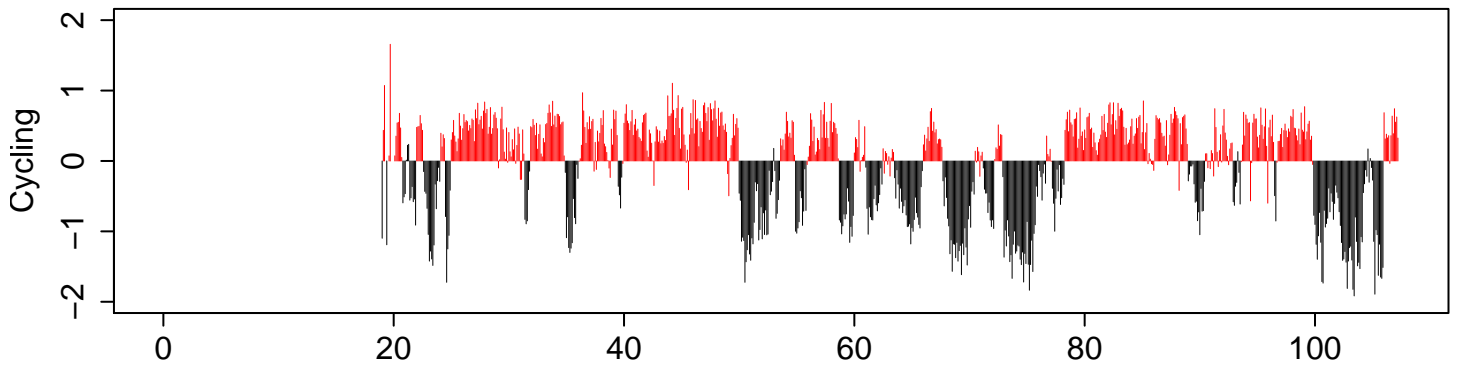
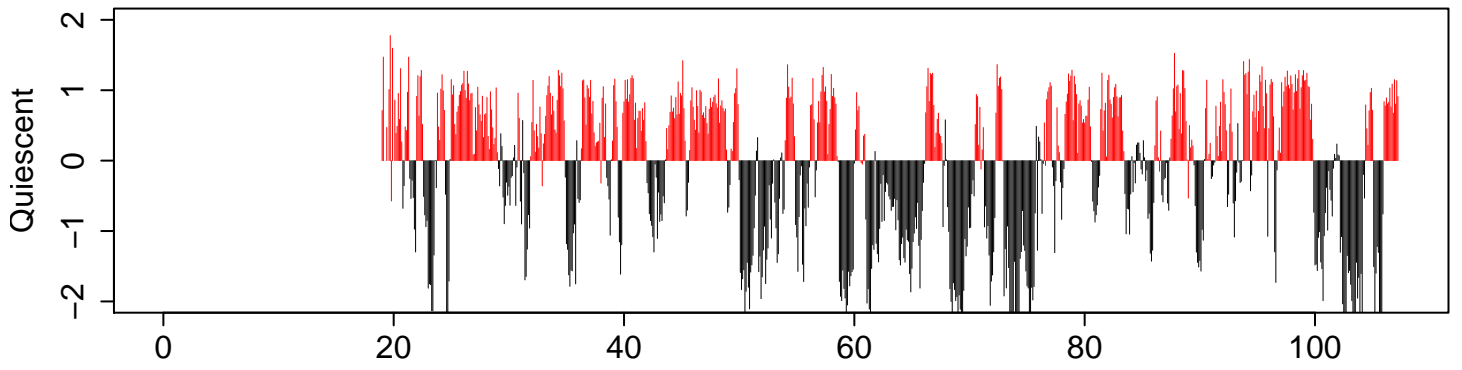
Position in Mb – chr13

Change LMNB1 Interaction

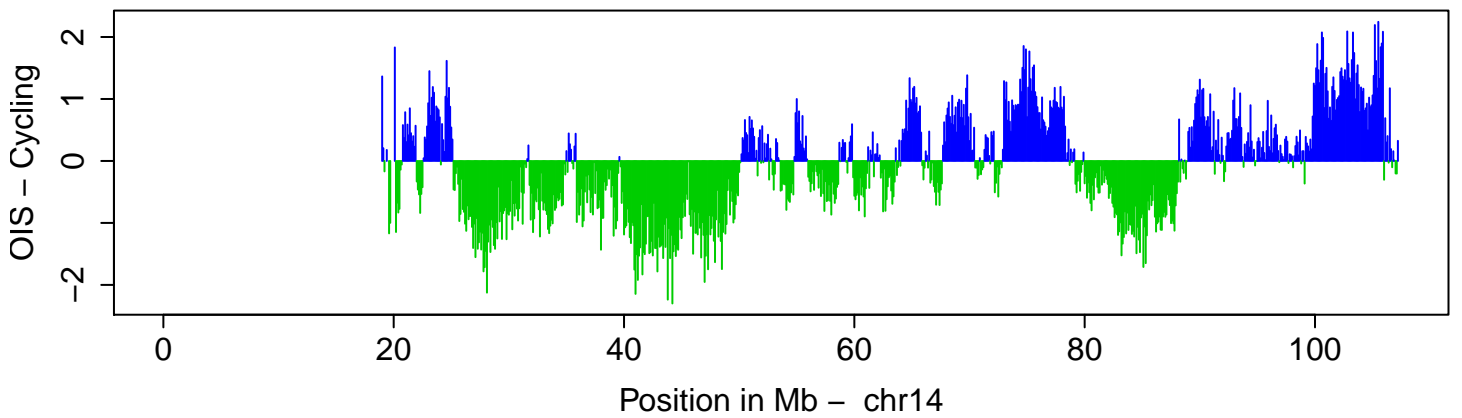


Position in Mb – chr13

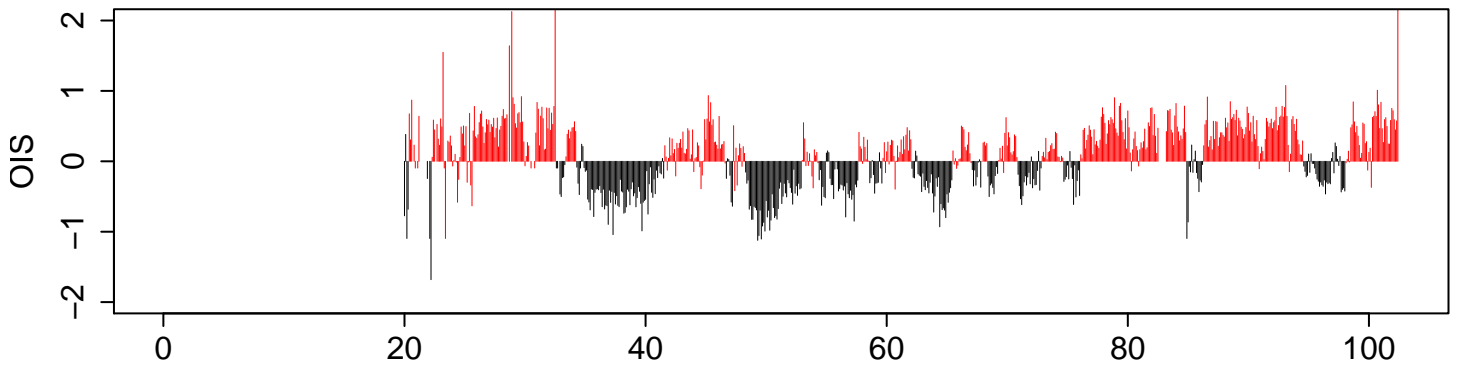
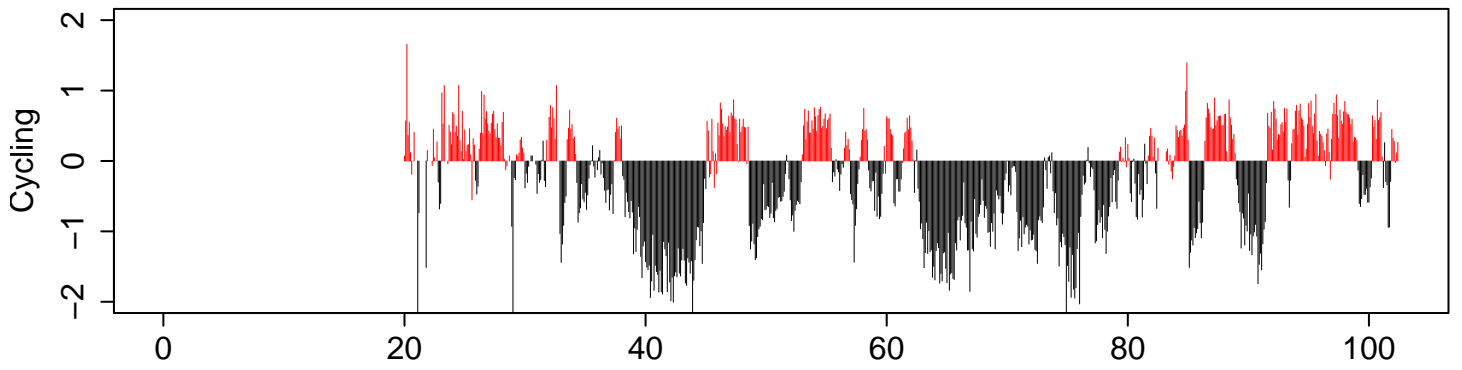
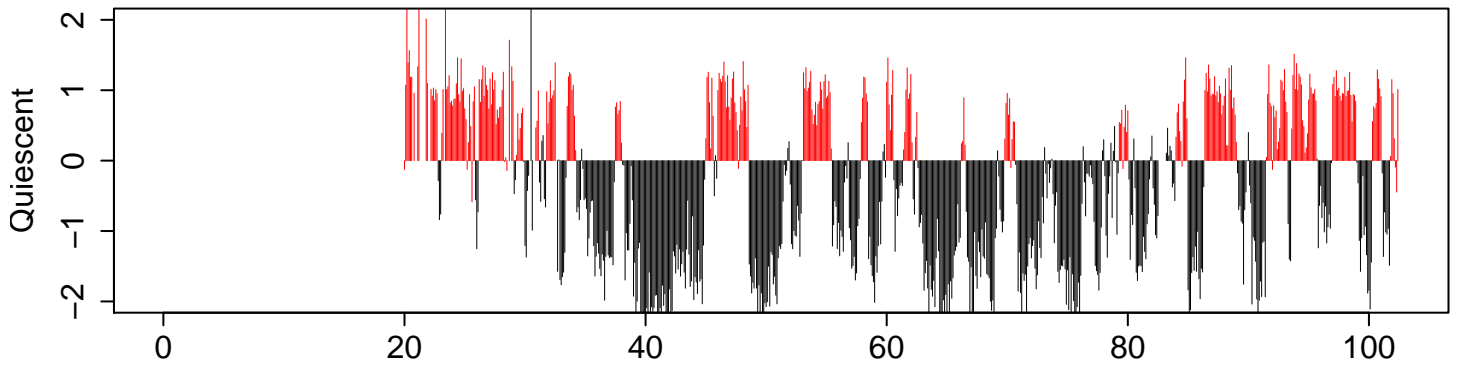
LMNB1 interaction (log2)



Change LMNB1 Interaction

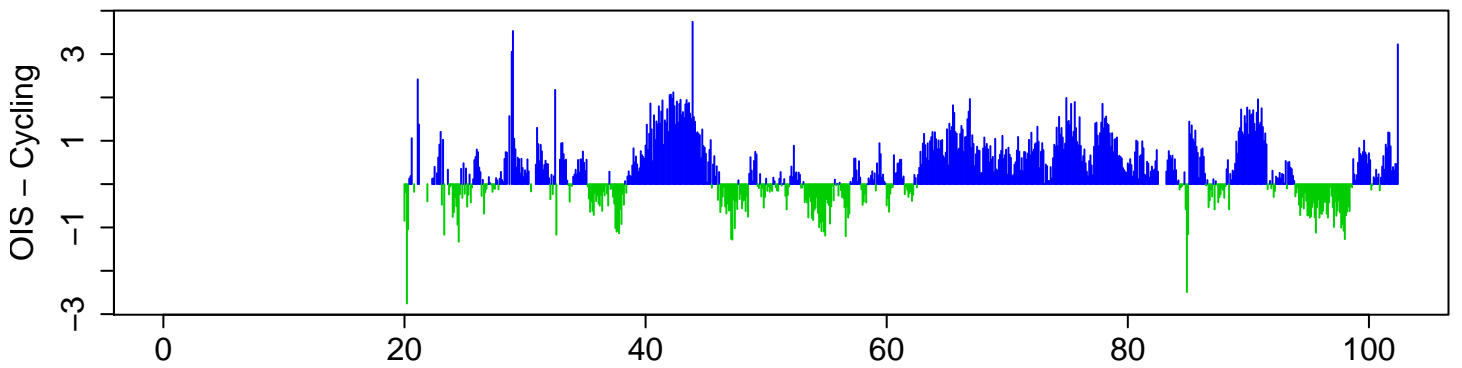


LMNB1 interaction (log2)



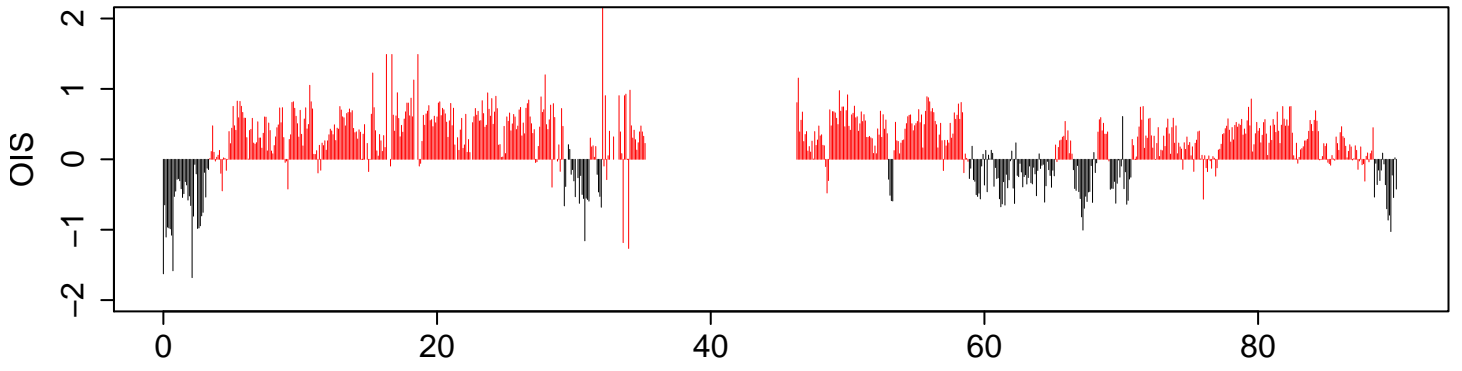
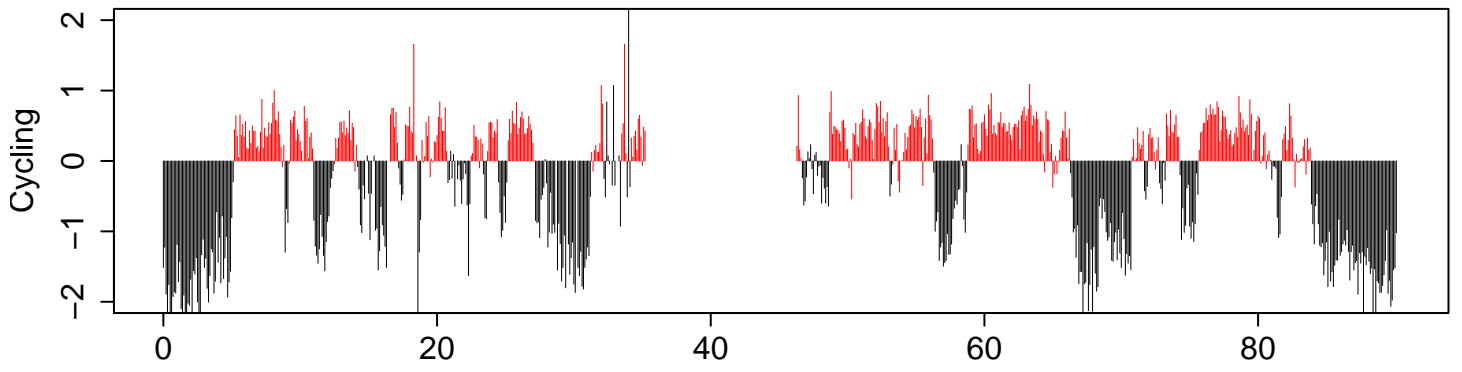
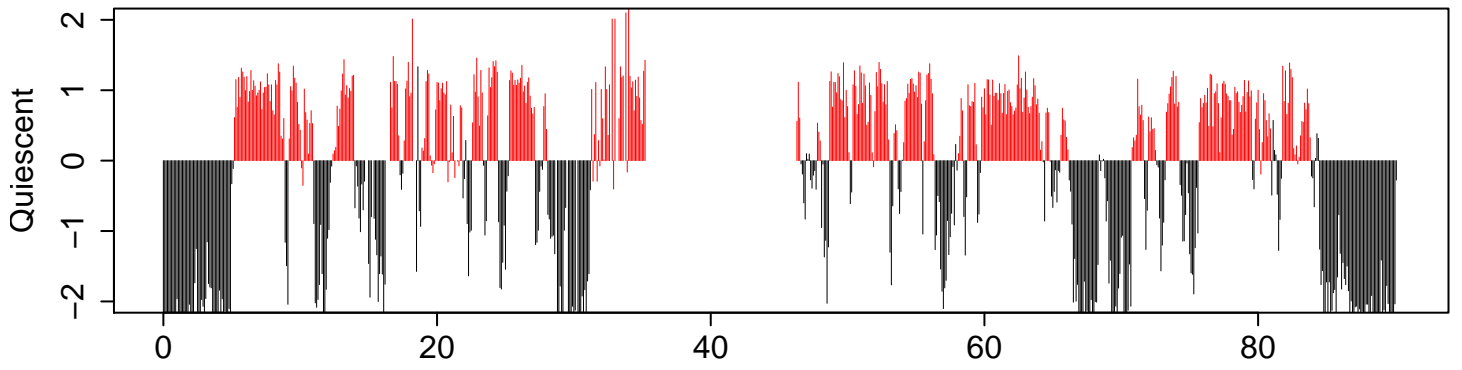
Position in Mb - chr15

Change LMNB1 Interaction

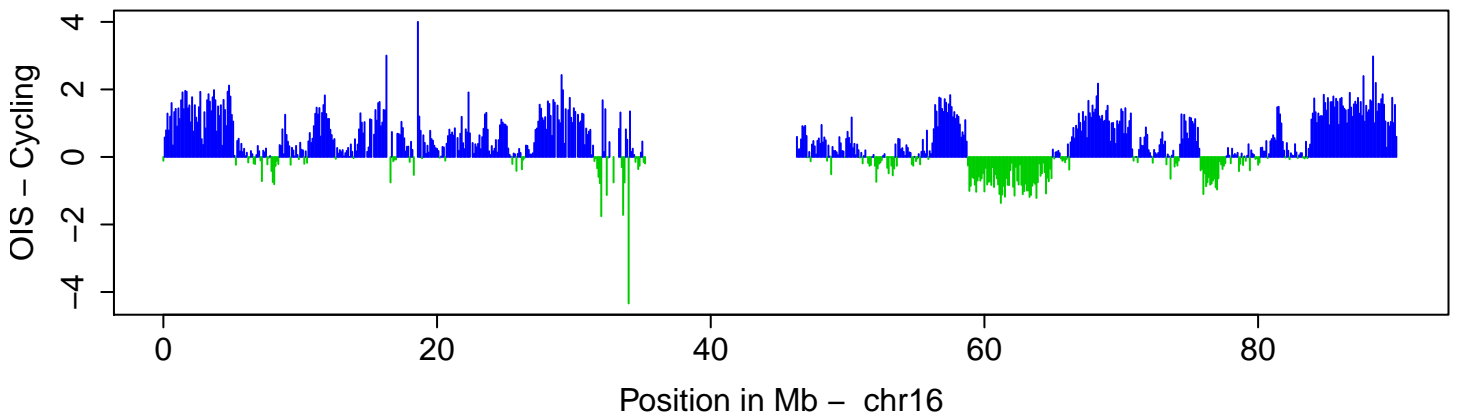


Position in Mb - chr15

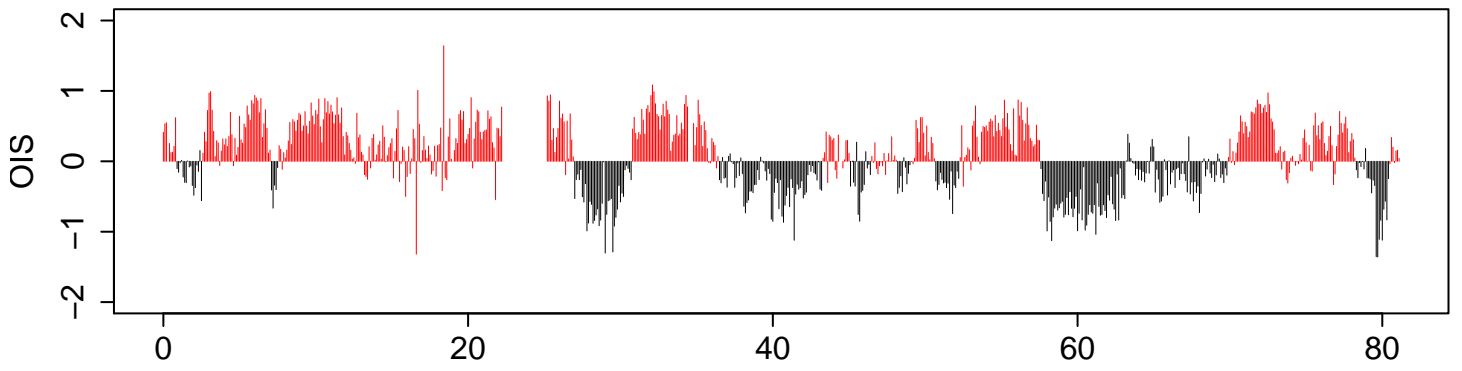
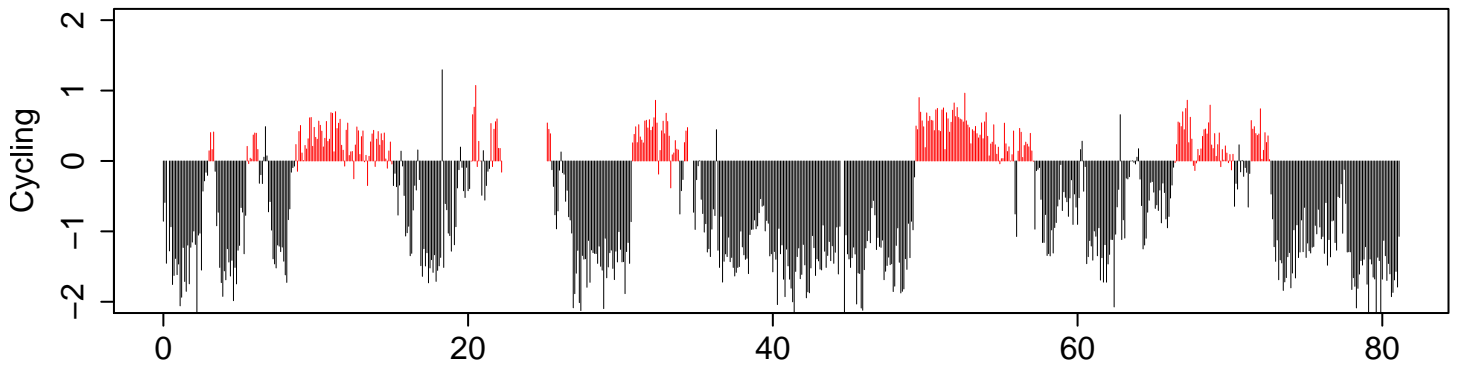
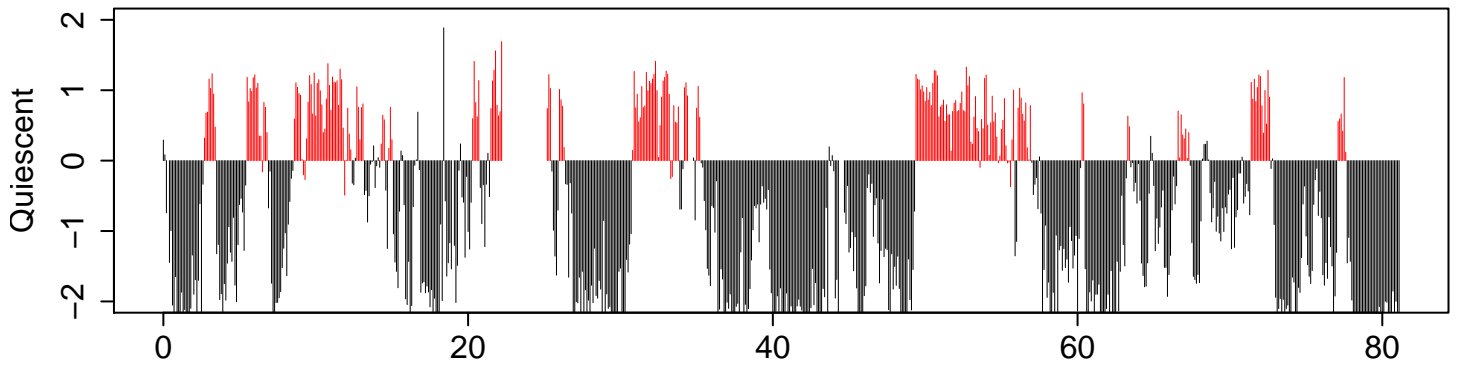
LMNB1 interaction (log2)



Change LMNB1 Interaction

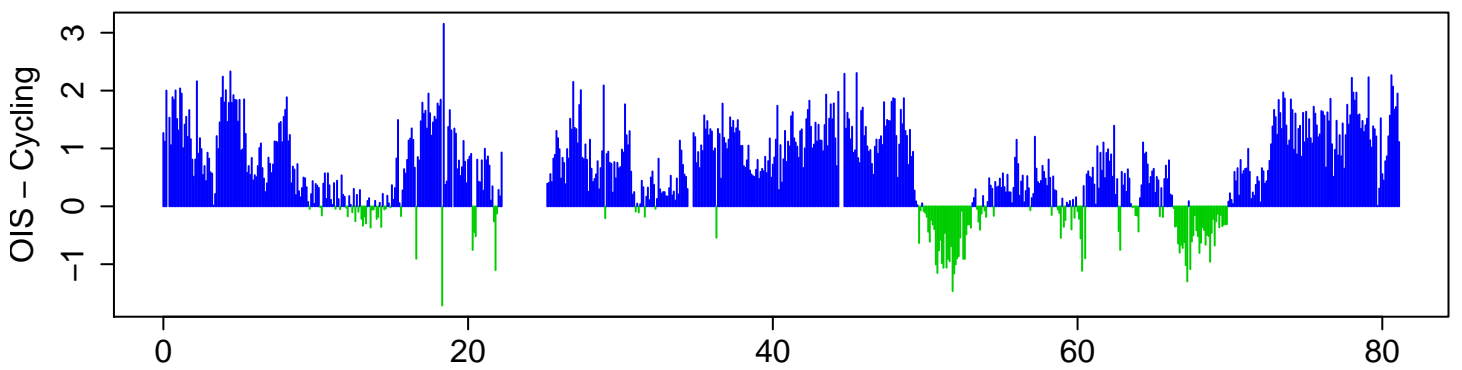


LMNB1 interaction (log2)



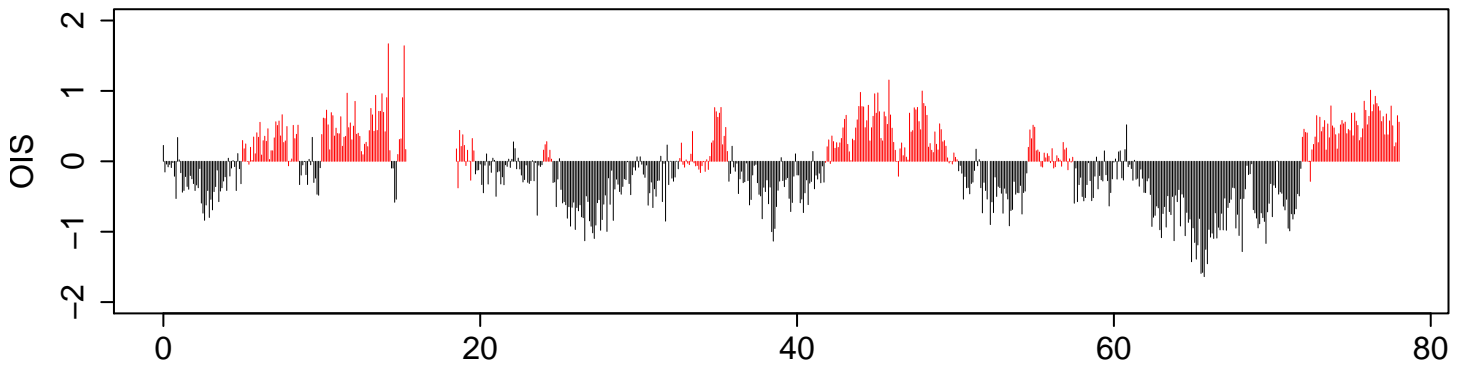
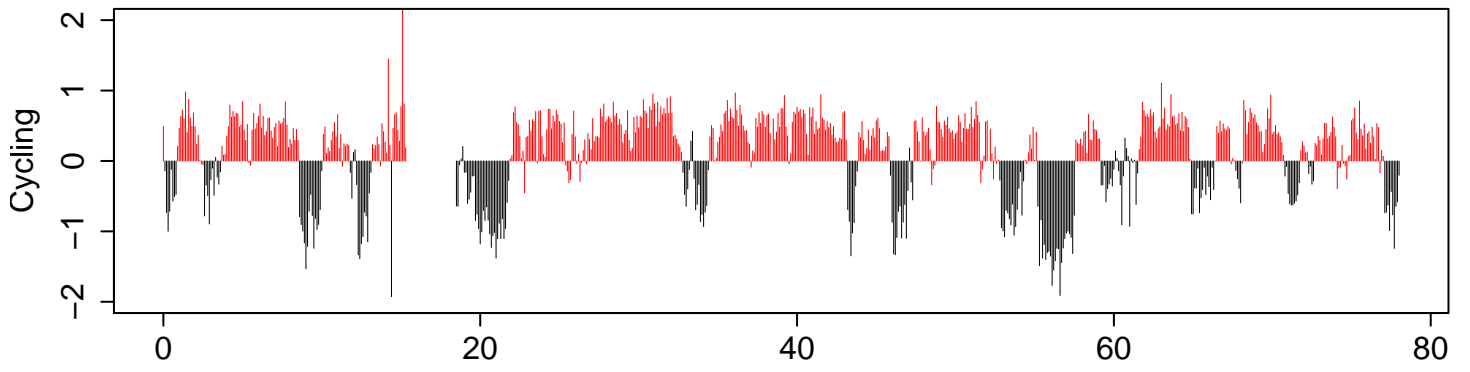
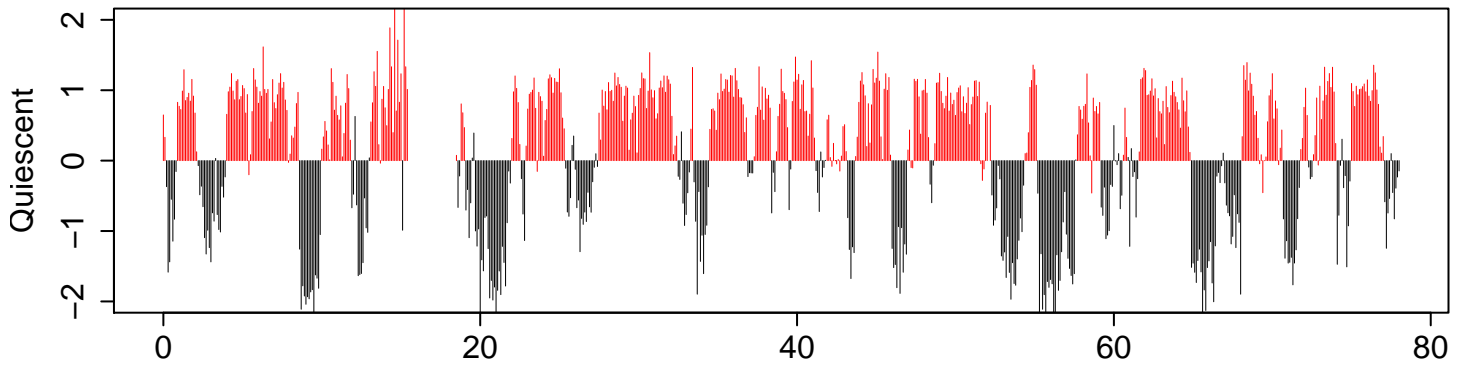
Position in Mb - chr17

Change LMNB1 Interaction

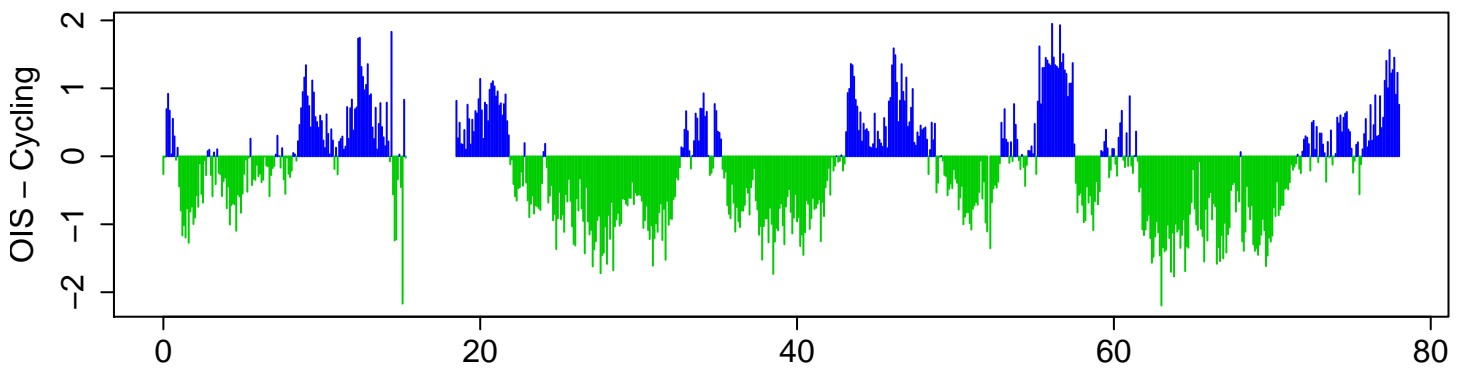


Position in Mb - chr17

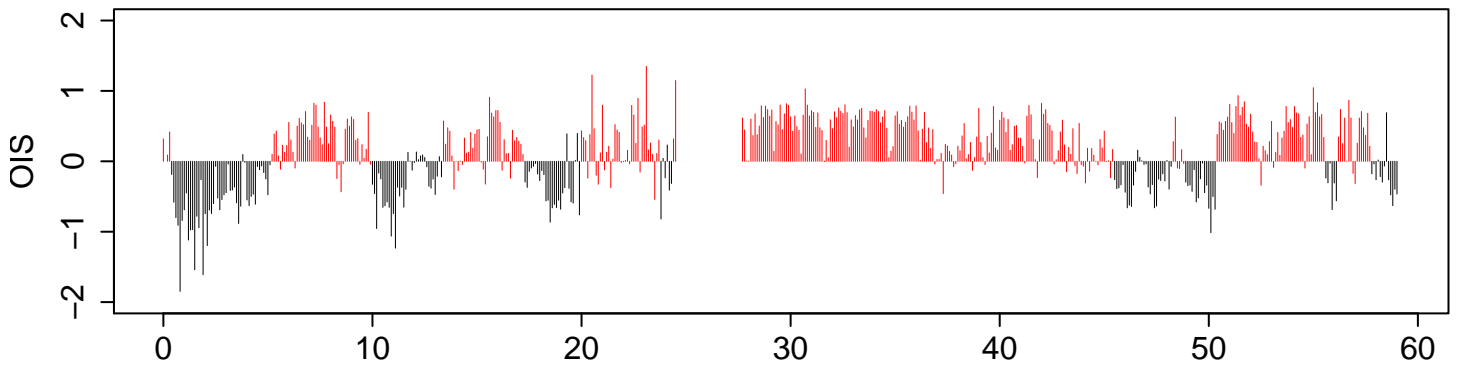
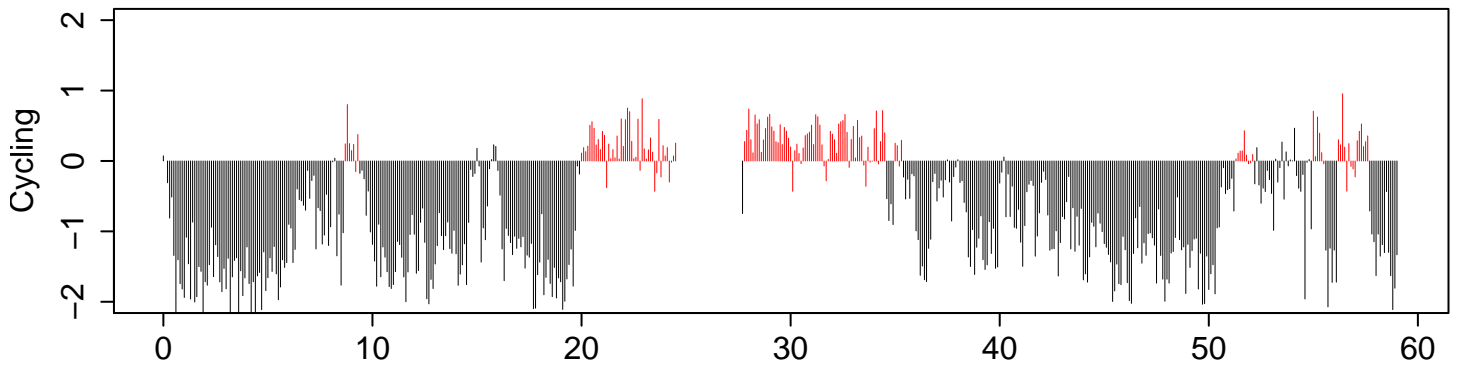
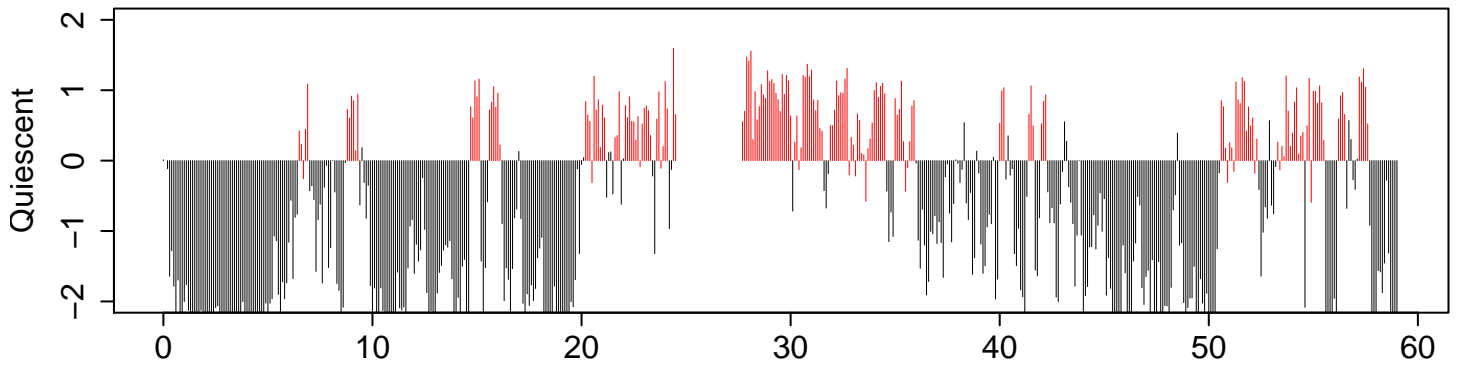
LMNB1 interaction (log2)



Change LMNB1 Interaction

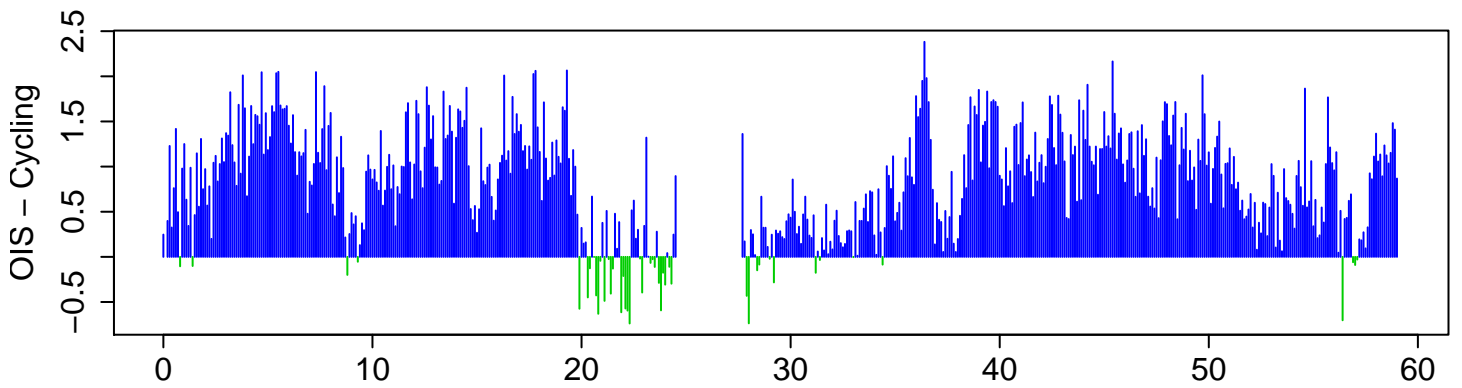


LMNB1 interaction (log2)



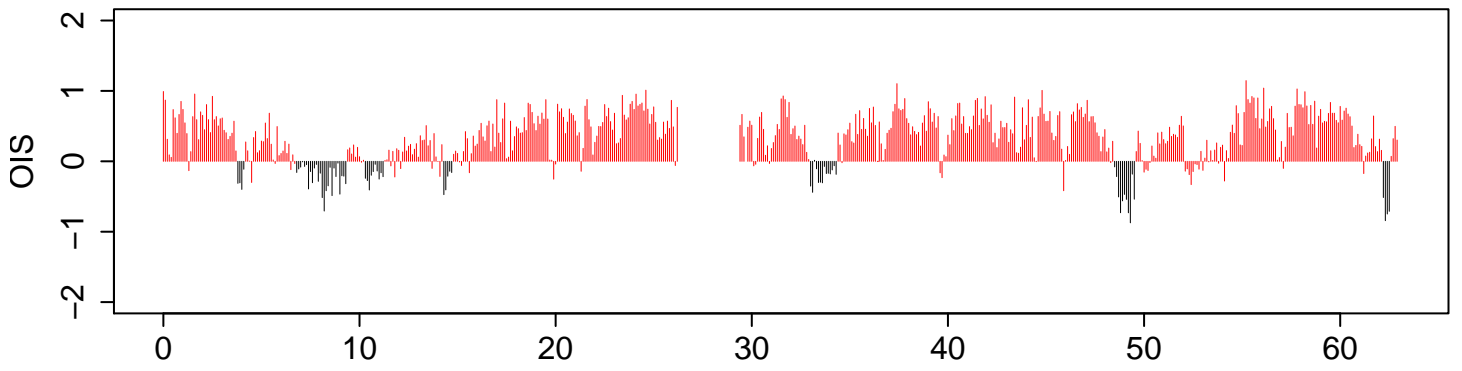
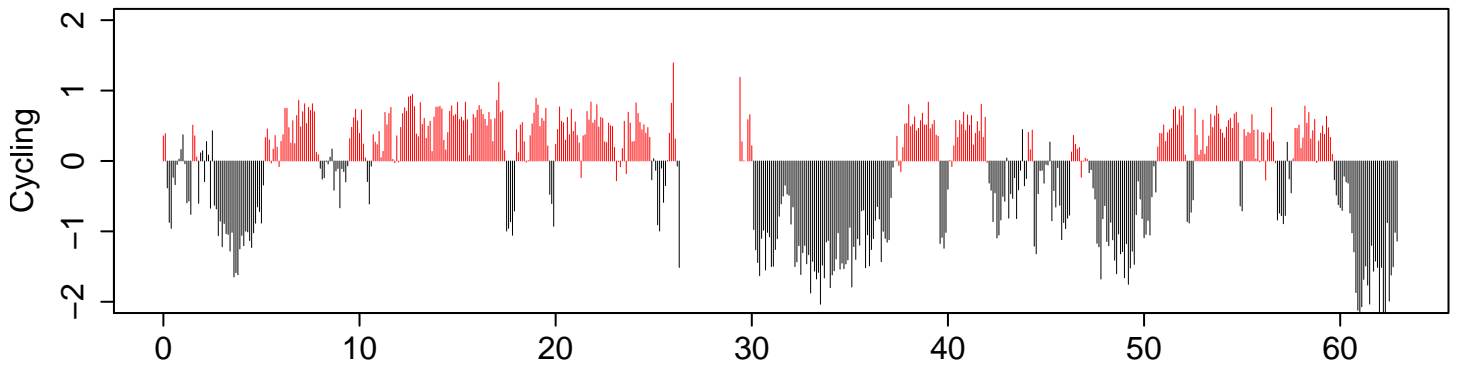
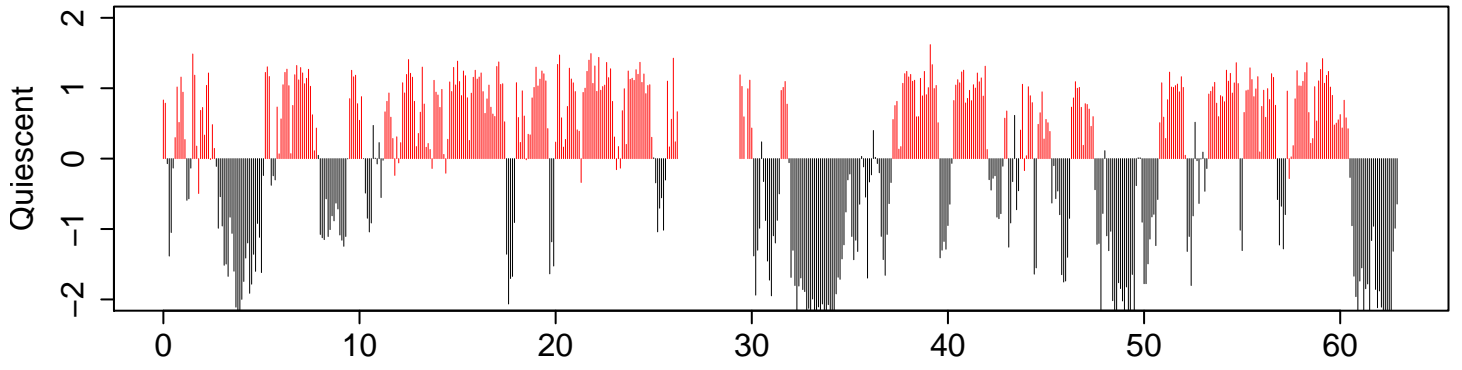
Position in Mb - chr19

Change LMNB1 Interaction

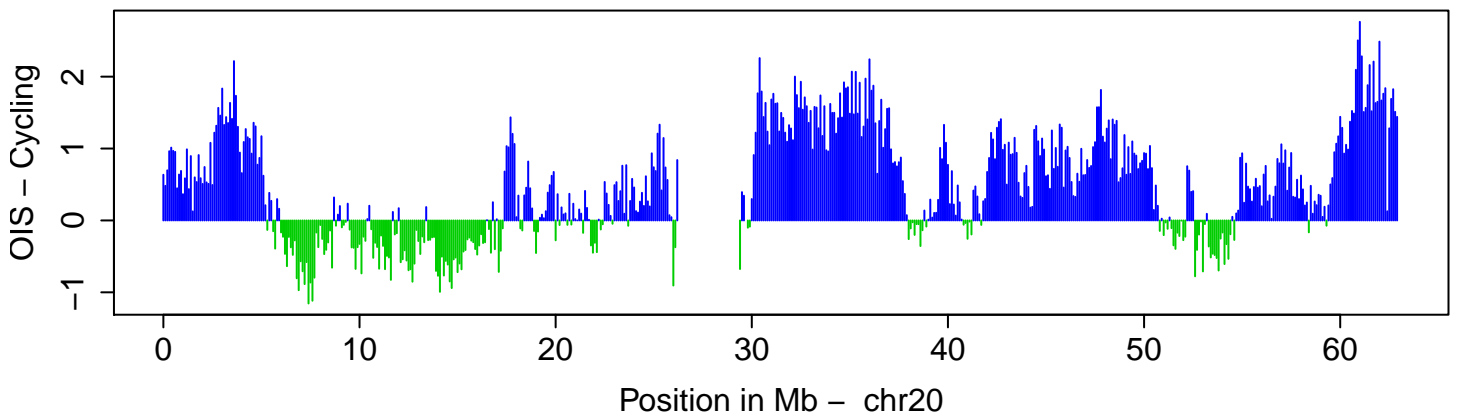


Position in Mb - chr19

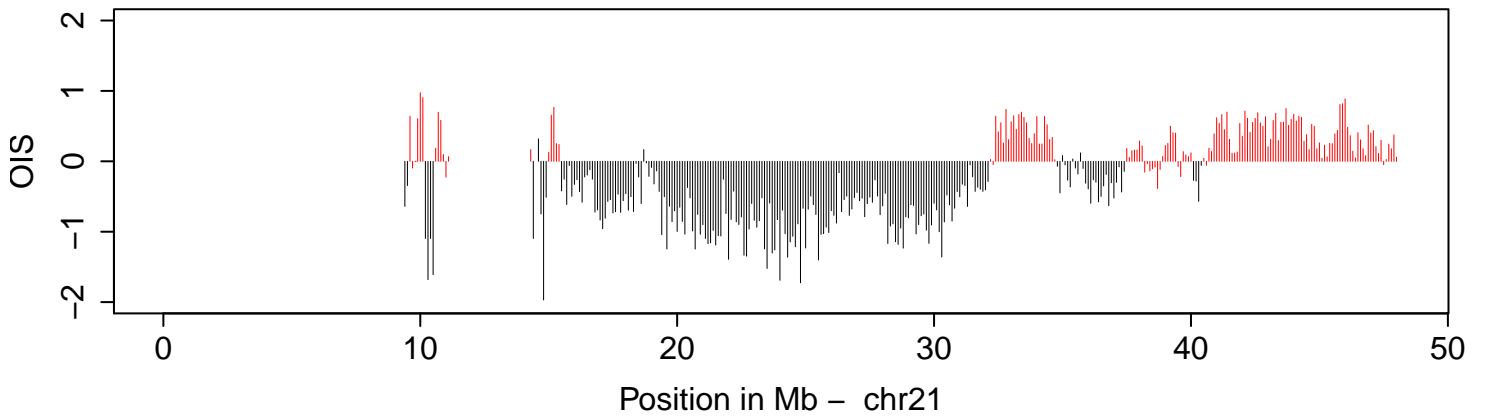
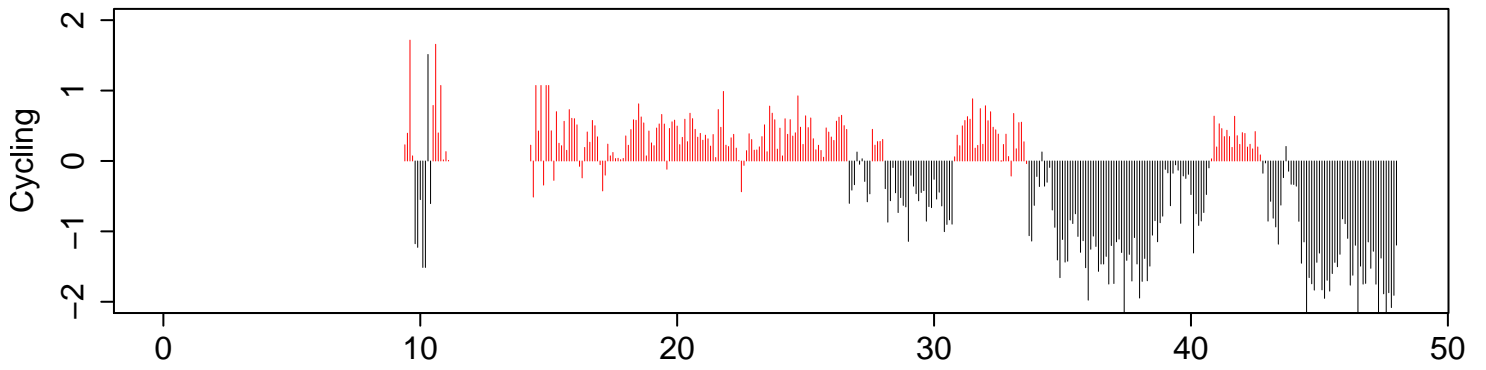
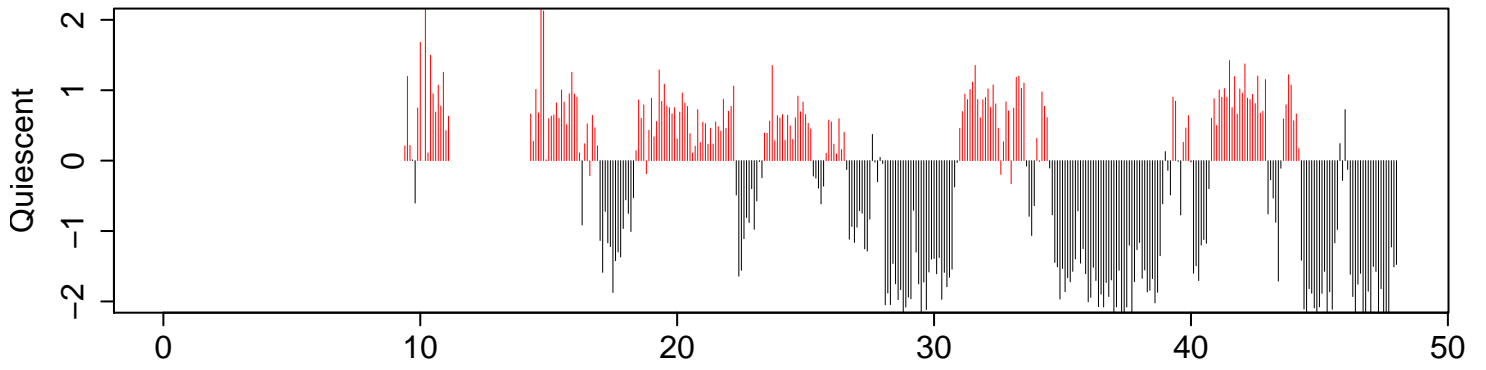
LMNB1 interaction (log2)



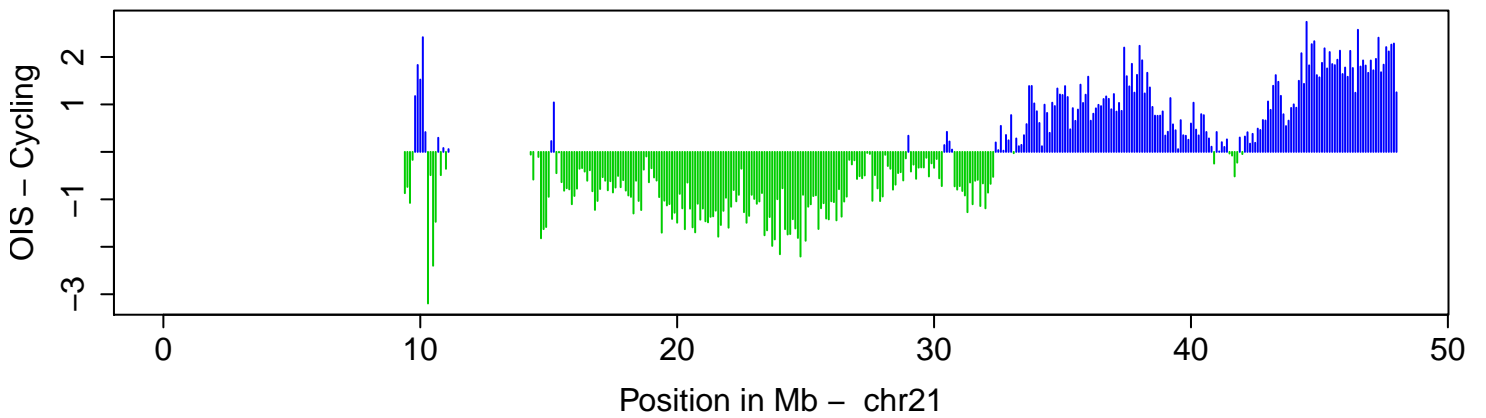
Change LMNB1 Interaction



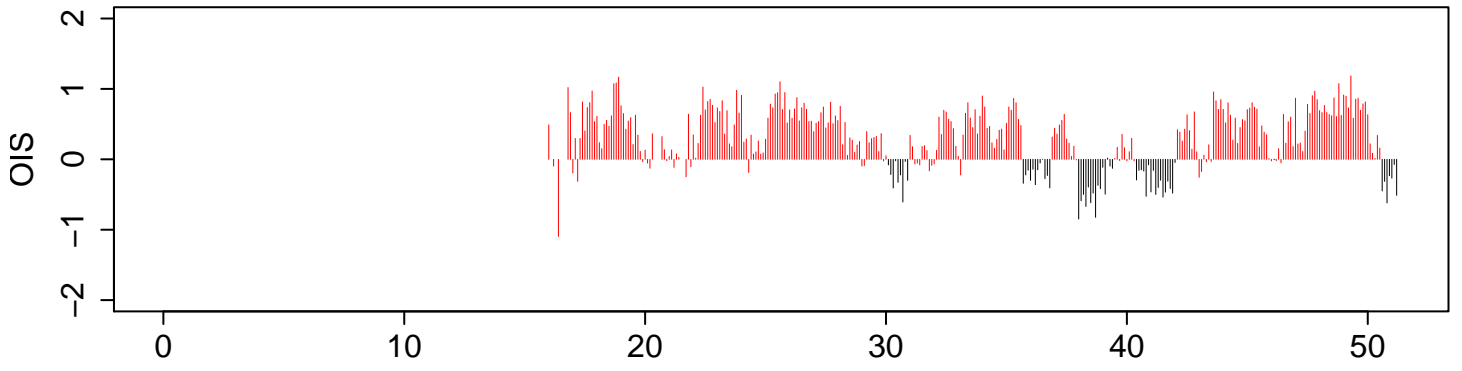
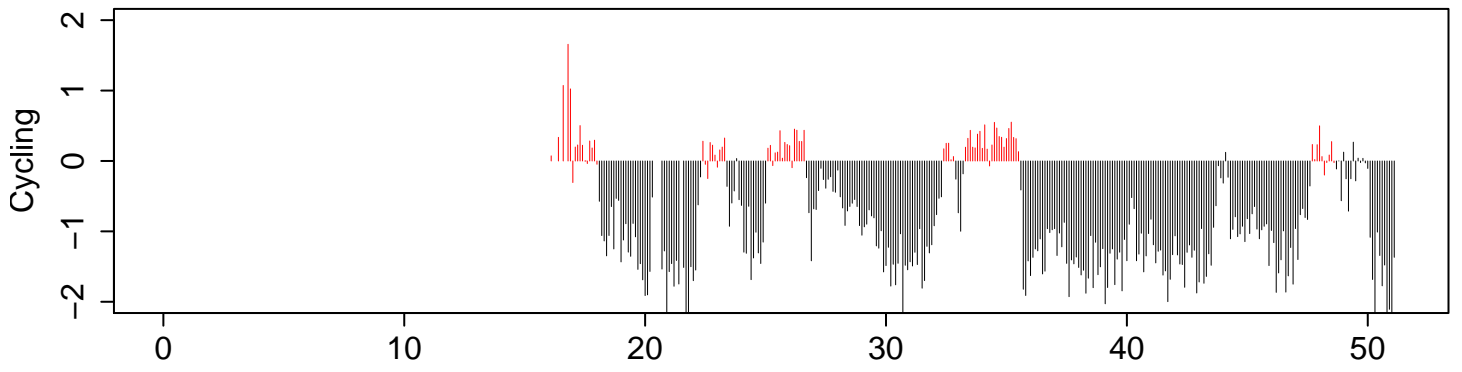
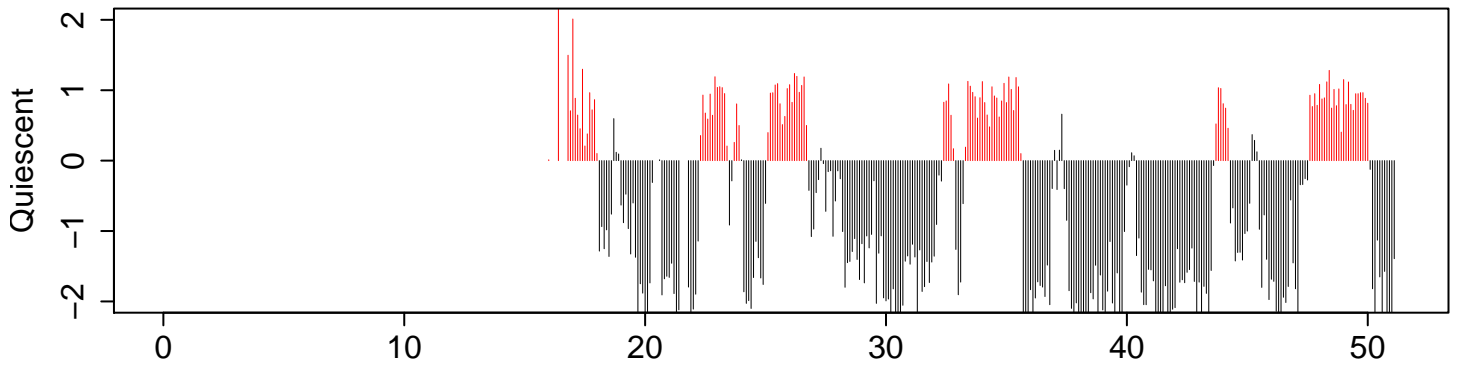
LMNB1 interaction (log2)



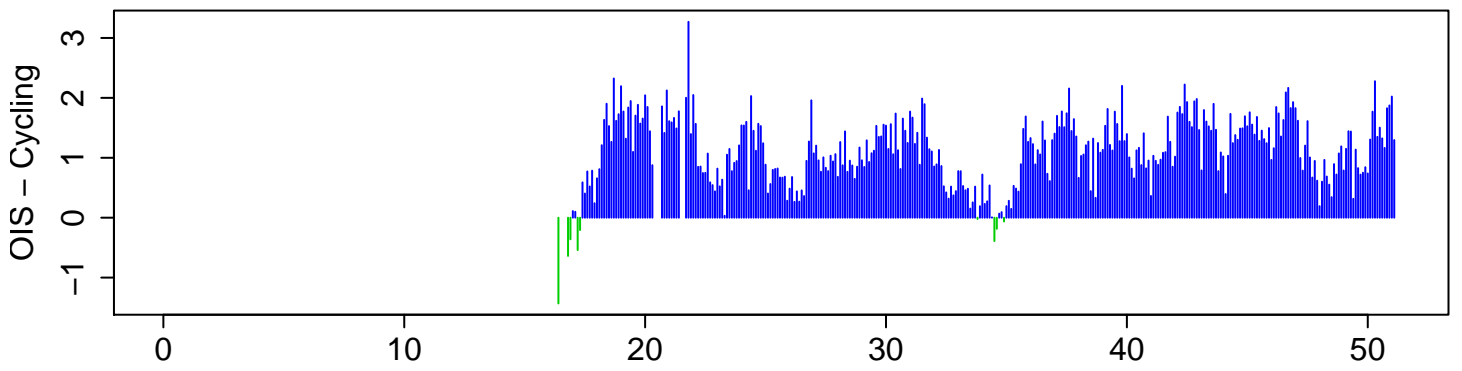
Change LMNB1 Interaction

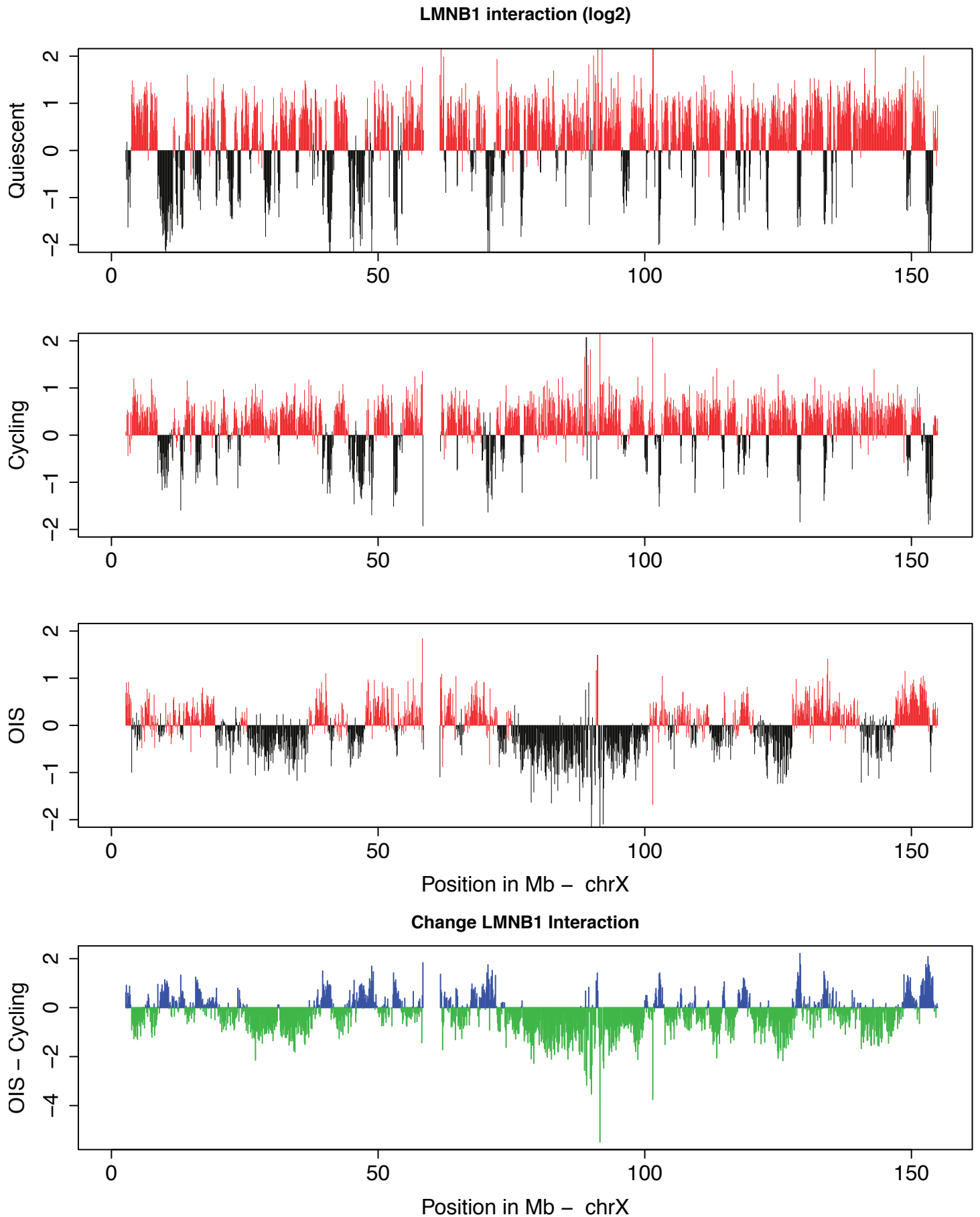


LMNB1 interaction (log2)



Change LMNB1 Interaction





Supplemental figure S2: Genome-NL interaction profiles along all chromosomes in quiescent cells after 10 days of serum starvation, cycling and OIS cells 10 days after retroviral transduction. Y-axis represents log2 of Dam-LMNB1 over Dam-only methylation ratio. The blue/green peaks show the changes in LMNB1 interaction in OIS cells (compared to cycling) for all chromosomes.