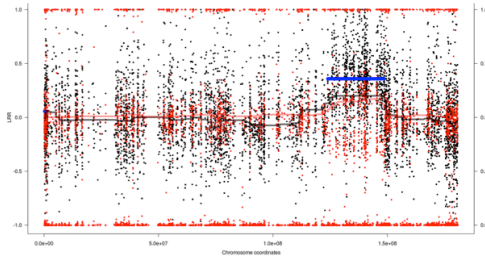
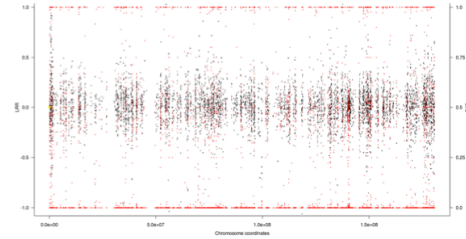


DecipherID 261240 detected *post hoc*

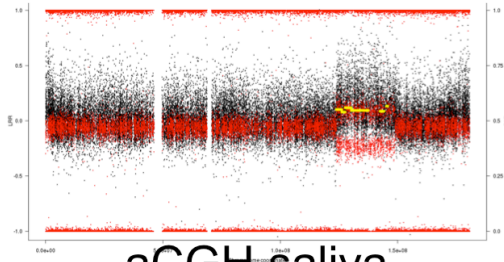
exome blood



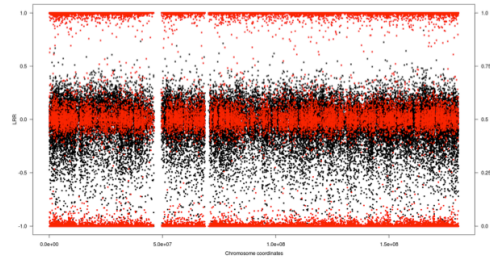
exome blood



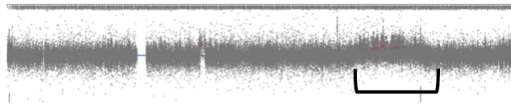
SNP saliva



SNP blood



aCGH saliva



undetected

(hypersegmented and overlooked)

Supplementary Figure 18: Post-hoc detection of sample 261240: Initially undetected in exome (done on blood), SNP-chip results showed that the event is absent in blood. Post-hoc detection, by exome, of saliva successfully detected the event. Note that array CGH of saliva identified small segments of elevation but none was sufficiently large to pass size filtering. The Mscore of this detection was 12.