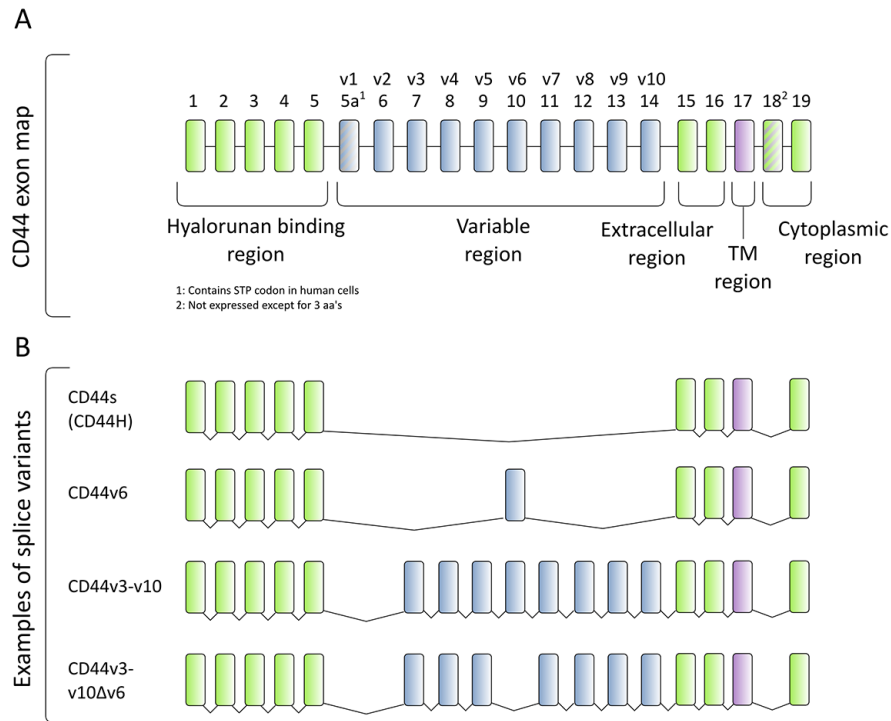
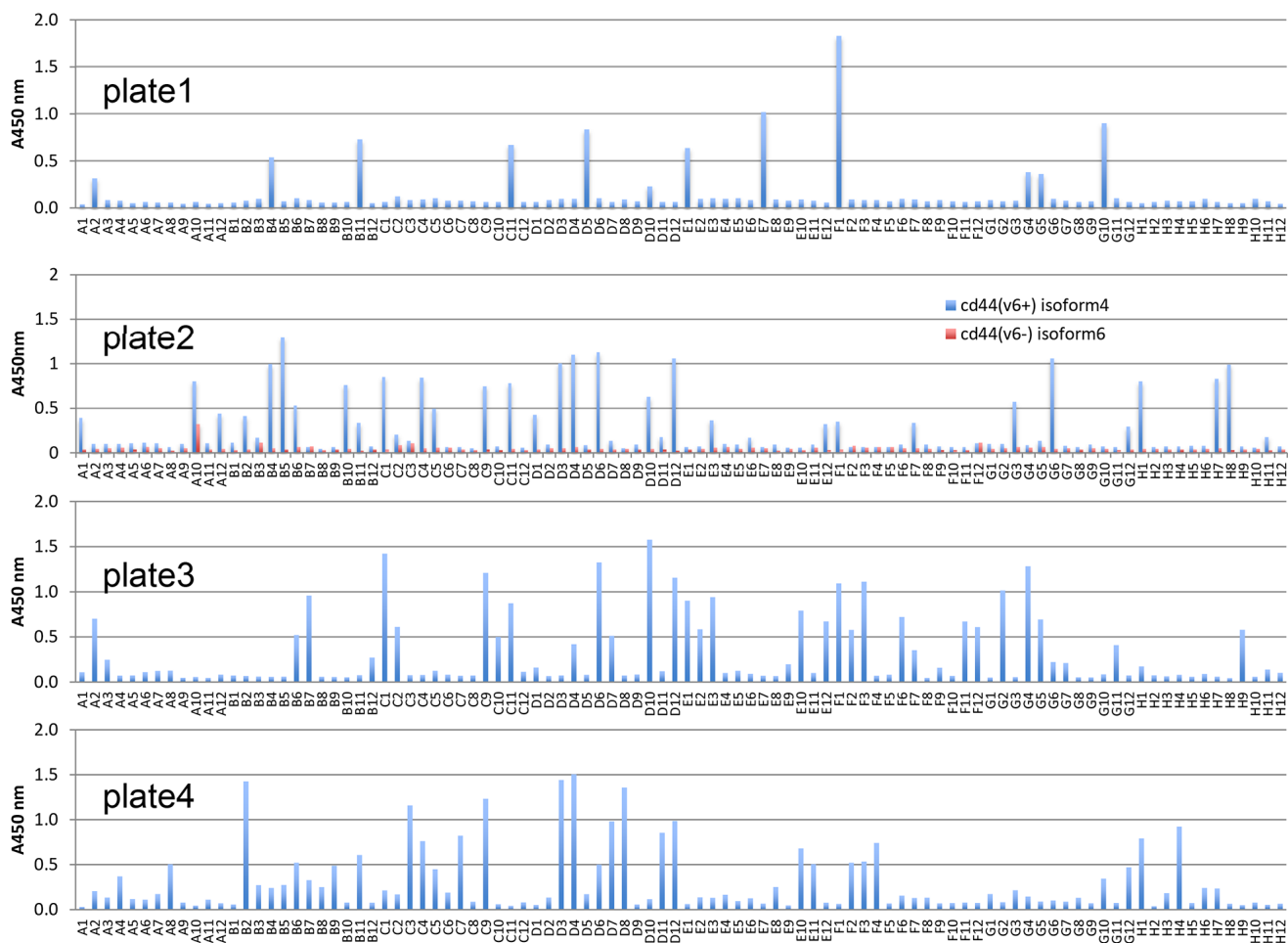


# Generation and evaluation of antibody agents for molecular imaging of CD44v6-expressing cancers

## SUPPLEMENTARY MATERIALS



**Supplementary Figure 1:** (A) Gene map of CD44. (B) Standard CD44 (CD44s) does not contain variable exons. The exons v1-v10 are alternatively spliced [20].



**Supplementary Figure 2: Primary ELISA of 384 (4x96) scFv clones from 2 rounds of selection to CD44v6.** No or very few (1/96) clones have cross reactivity to CD44(v6-) as demonstrated on plate2 above (red bars).