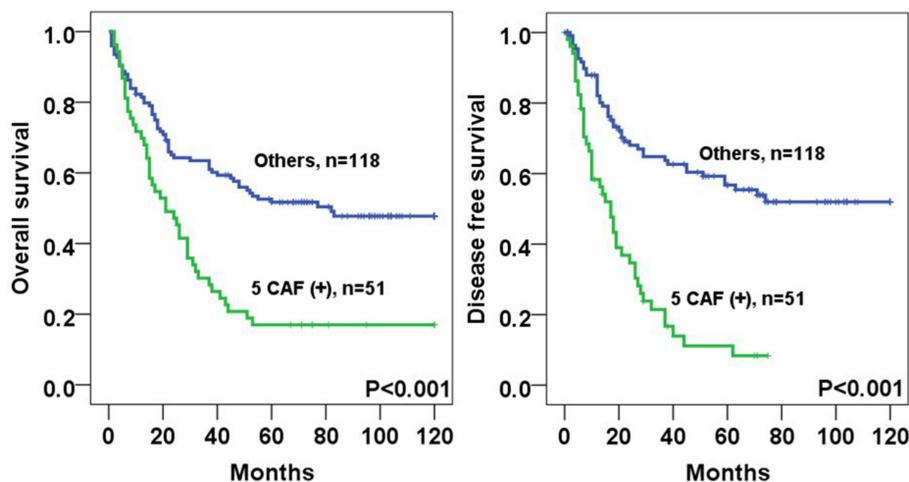


Twist1 is highly expressed in cancer-associated fibroblasts of esophageal squamous cell carcinoma with a prognostic significance

SUPPLEMENTARY MATERIALS



Supplementary Figure 1: Kaplan Meier survival curves of patients with esophageal squamous cell carcinoma (ESCC) according to expression of 5 cancer associated fibroblast (CAF) markers (Twist1, FSP1, SMA, Tenascin C, PDGFRa). Patients with ESCC showing expression of all 5 CAF markers showed significantly reduced overall survival and disease free survival rate than other patients