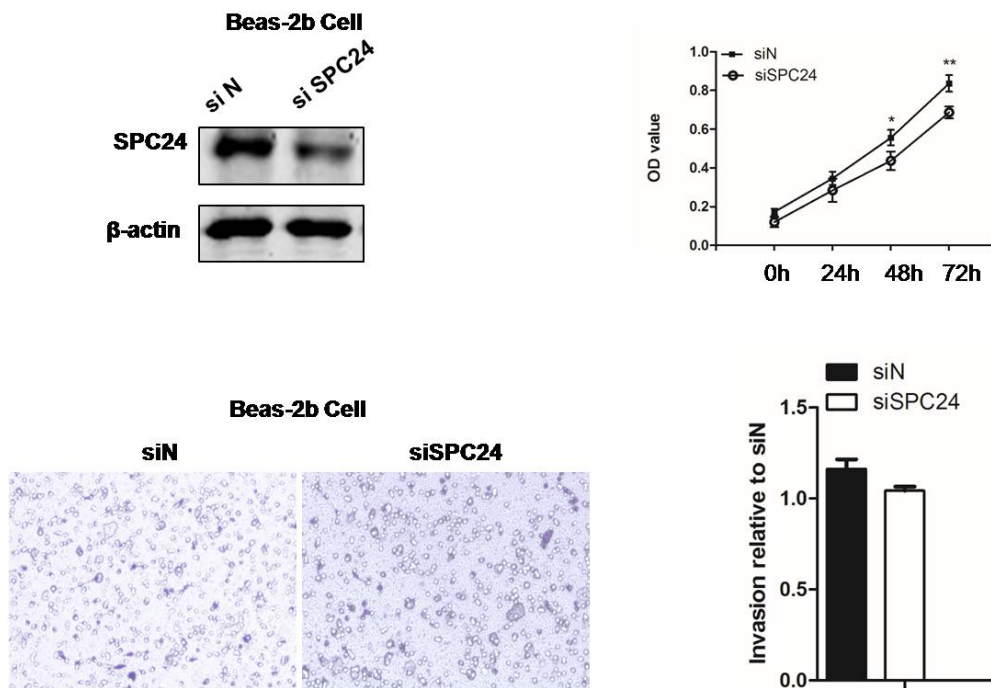


# A potential prognostic biomarker SPC24 promotes tumorigenesis and metastasis in lung cancer

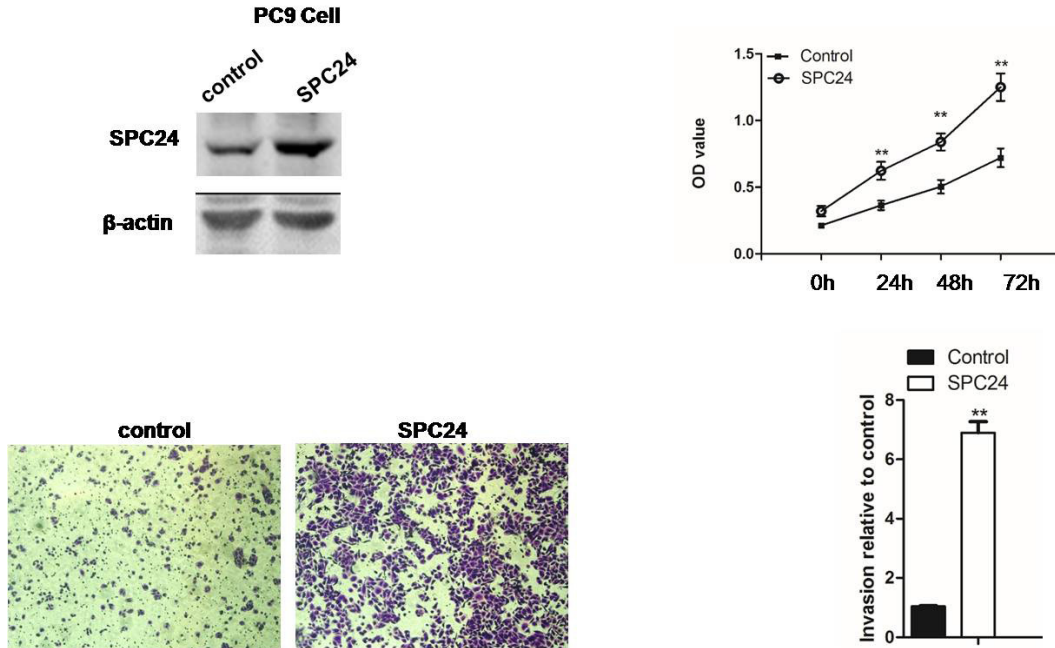
## Supplementary Materials

### Knockdown of SPC24 in normal human bronchial epithelial cells (BEAS 2B) has minimal effects on cell proliferation and migration



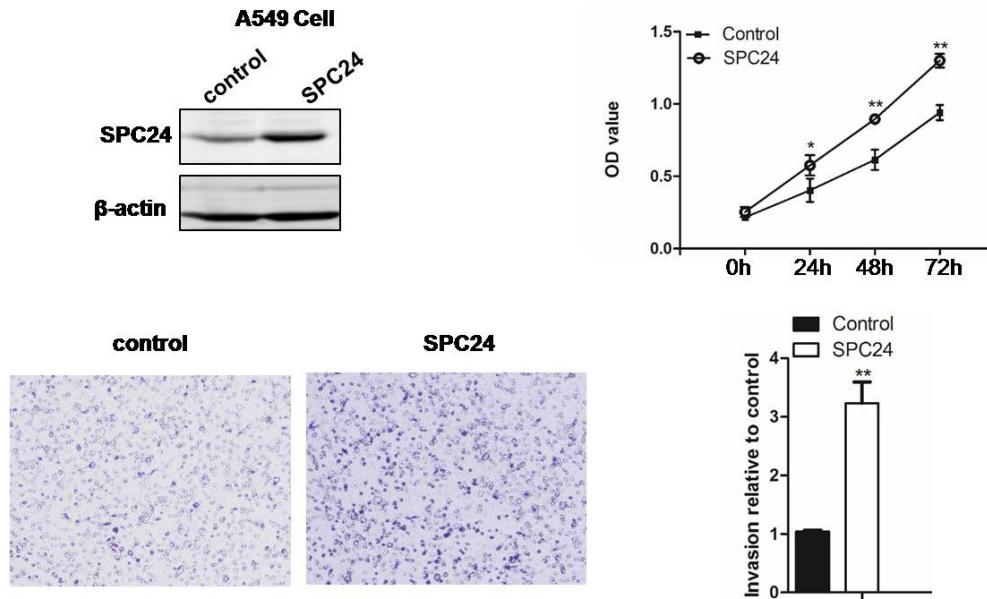
**Supplementary Figure 1: Knockdown of SPC24 in normal human bronchial epithelial cells (BEAS 2B) has minimal effects on cell proliferation and migration.** *SPC24* was knocked down by siRNA in BEAS 2B cells. Cell proliferation for *SPC24*-knockdown and control cells was measured as viable cell numbers that was recorded as OD<sub>450</sub> at 0, 24, 72, and 96 h. Transwell cell migration was also assayed and quantified for the control and si*SPC24* cells.

## Overexpression of SPC24 promotes cell proliferation and migration in PC9 cells



**Supplementary Figure 2: Over-expression of SPC24 promotes cell proliferation and migration in PC9 cells.** SPC24 was over-expressed in PC9 cells. Cell proliferation and migrations were measured by the OD<sub>450</sub> colorimetric and Transwell assays.

## Overexpression of SPC24 promotes cell proliferation and migration in A549 cells



**Supplementary Figure 3: Over-expression of SPC24 promotes cell proliferation and migration in A549 cells.** SPC24 was over-expressed in A549 cells. Cell proliferation and migrations were measured by the OD<sub>450</sub> colorimetric and Transwell assays.