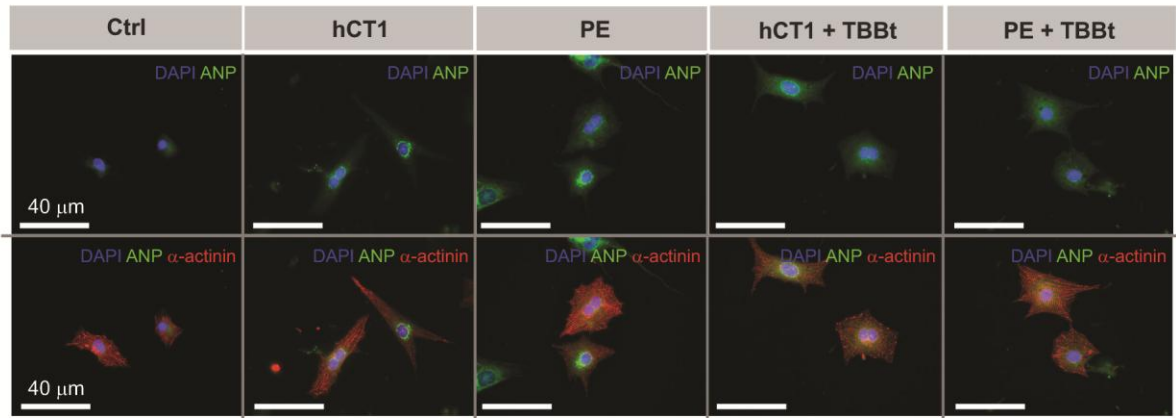


24 h treatment



Supplementary information, Figure S3. Casein kinase 2 (CK2) activation is required for hCT1 induced cardiomyocyte hypertrophy. Immunocytochemistry images from Figure 3I-K. Primary rat cardiomyocytes were treated for 24 h with control serum-free medium (Ctrl), hCT1 (0.5 nM), or PE (100 μ M) in the presence or absence of the CK2 inhibitor (TBBt, 50 μ M). Immunocytochemistry was used to stain cells for: α -actinin (red), the pro-hypertrophic marker atrial natriuretic peptide – ANP (green), and nuclei were stained with DAPI (blue). Scale bar, 40 μ m.