

Fig. 1S Liu Wei Di Huang Wan had no effects on the hyperglycemia (A), the hypertension (B) and the size of tumor (C) in *MLH3*(-/+) mice with hyperglycemia, hypertension and tumor, separately.

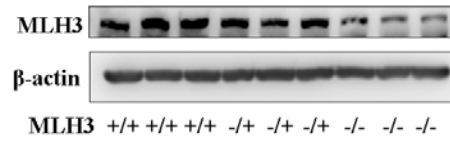


Fig. 2S The expression of MLH3 in WT mice, *MLH3*^{-/+} mice and *MLH3*^{-/-} mice. The expression of MLH3 was detected by western-blot.