

Supplemental Figures for:
Efficacy and Safety of Pertuzumab and Trastuzumab Administered in a Single Infusion Bag, Followed by Vinorelbine: VELVET Cohort 2 Final Results
Michael Andersson et al.

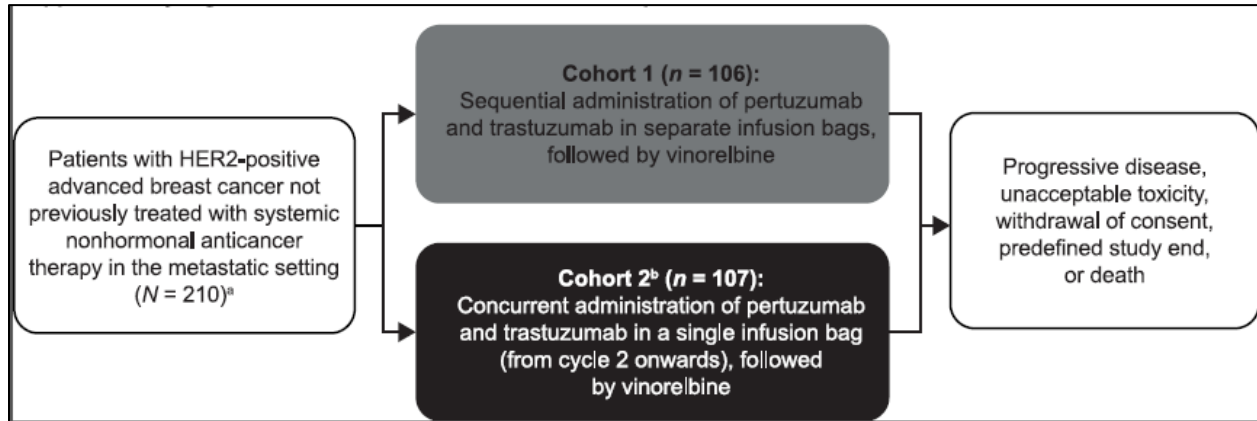


Figure S1. VELVET study design. Reprinted from Perez EA, López-Vega JM, Petit T et al. Safety and efficacy of vinorelbine in combination with pertuzumab and trastuzumab for first-line treatment of patients with HER2-positive locally advanced or metastatic breast cancer: VELVET Cohort 1 final results. *Breast Cancer Res* 2016;18:126 under the terms of the Creative Commons Attribution 4.0 International License (<https://creativecommons.org/licenses/by/4.0/>).

^aSample size was based on assuming a best overall response of 70–80% in each cohort.

^bRecruitment into Cohort 2 began after Cohort 1 had finished enrolling patients.

Abbreviation: HER2, human epidermal growth factor receptor 2.

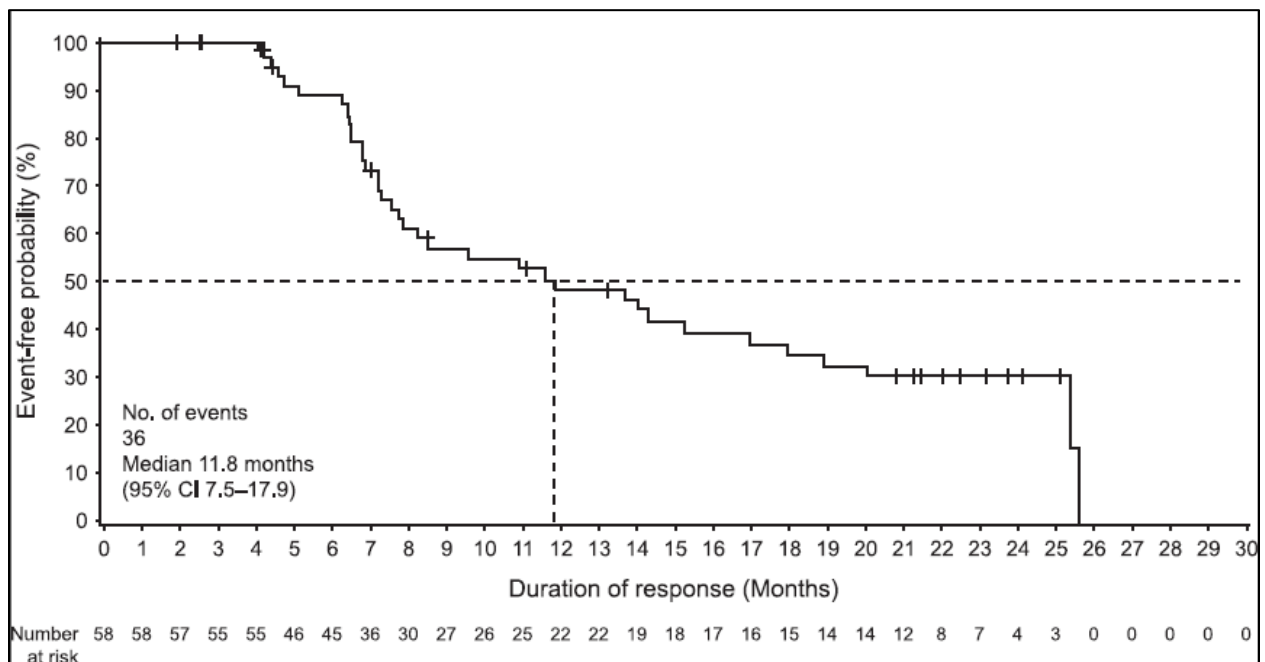


Figure S2. Investigator-assessed duration of response in responders (intent-to-treat population)
Abbreviation: CI, confidence interval.