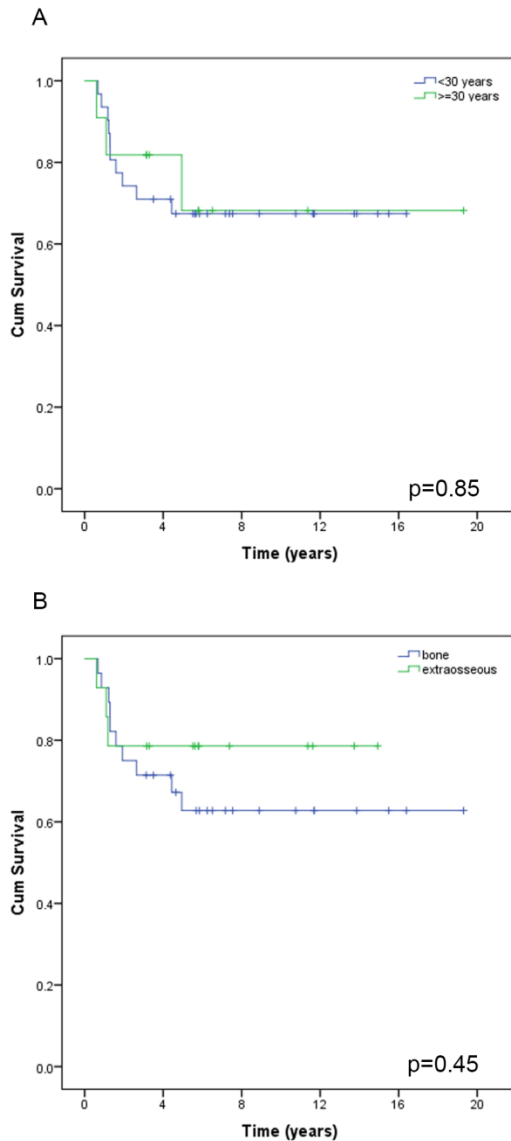


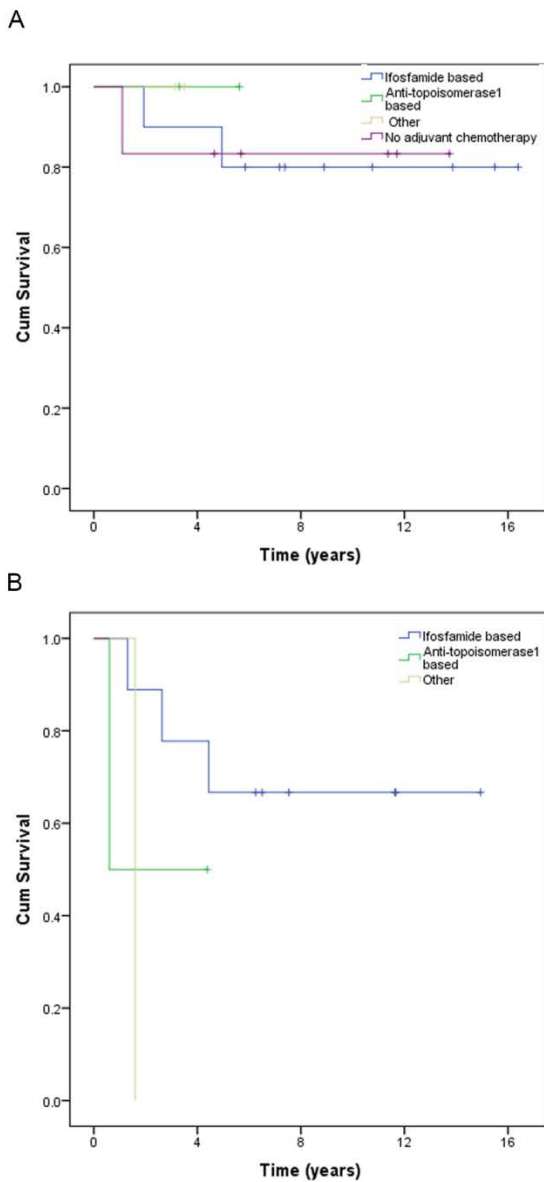
Supplemental Figures for:  
Vincristine, Ifosfamide, and Doxorubicin (Vid) for Initial Treatment of Ewing Sarcoma in Adults  
Robert Benjamin et al.

**Figure S1.** Kaplan Meier curves for patients who presented with localized disease grouped by age (A; <23.5 n=21, ≥23.5) and bone vs extra-osseous site of primary (B; bone n= 14, extra-osseous n=28).



Supplemental Figures for:  
 Vincristine, Ifosfamide, and Doxorubicin (Vid) for Initial Treatment of Ewing Sarcoma in Adults  
 Robert Benjamin et al.

**Figure S2.** Kaplan Meier curves for patients who presented with localized disease and with  $\geq 95\%$  necrosis (A; ifosfamide based n=10, anti-topoisomerase1 based n=2, other regimen n=2, no adjuvant chemotherapy n=6) or  $< 95\%$  necrosis (B; ifosfamide based n=9, anti-topoisomerase1 based n=2, other regimen n=1) grouped by adjuvant chemotherapy regimen.



Supplemental Figures for:  
Vincristine, Ifosfamide, and Doxorubicin (Vid) for Initial Treatment of Ewing Sarcoma in Adults  
Robert Benjamin et al.

**Figure S3.** Kaplan Meier curves for patients who presented with localized disease and with  $\geq 95\%$  necrosis (A; Etoposide based n=3, No etoposide including no adjuvant therapy n=18) or  $< 95\%$  necrosis (B; Etoposide based n=8, No Etoposide n=4).

