

Figure S2. BiFC negative controls and subcellular localization of TPL, CDF1, CDF1-ΔN, and CDF1-mut. (a) BiFC interaction analysis in transiently infected *N. benthamiana* leaves between full-length of CDF1 protein, CDF1-ΔN, CDF1-mut variants, TPL, and GST protein (a negative control). Scale bars show 50 μm. (b) Representative images of full-length YFP fusions of CDF1 protein, CDF1-ΔN, CDF1-mut variants, and TPL protein in transiently infected *N. benthamiana* leaf epidermal cells. Scale bars show 10 μm. For both (a) and (b) Histone H2B-RFP was used to determine the position of the nucleus in the same cell.

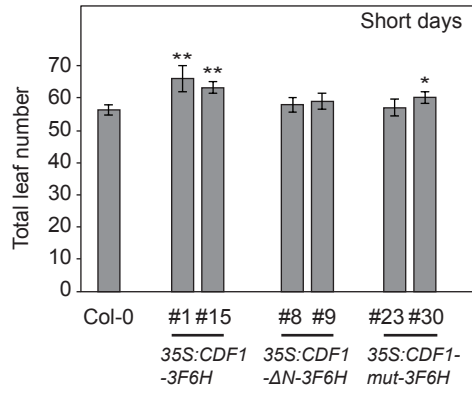


Figure S3. Flowering phenotype of Col-0, *35S:CDF1-3F6H*, *35S:CDF1-ΔN-3F6H*, and *35S:CDF1-mut-3F6H* transgenic lines in short days. Quantification of flowering time by total leaf number at bolting from figure 2d under long days. Means +/- SEM were calculated from N=16 individuals. *P < 0.05, **P < 0.01 (one-tailed t test).

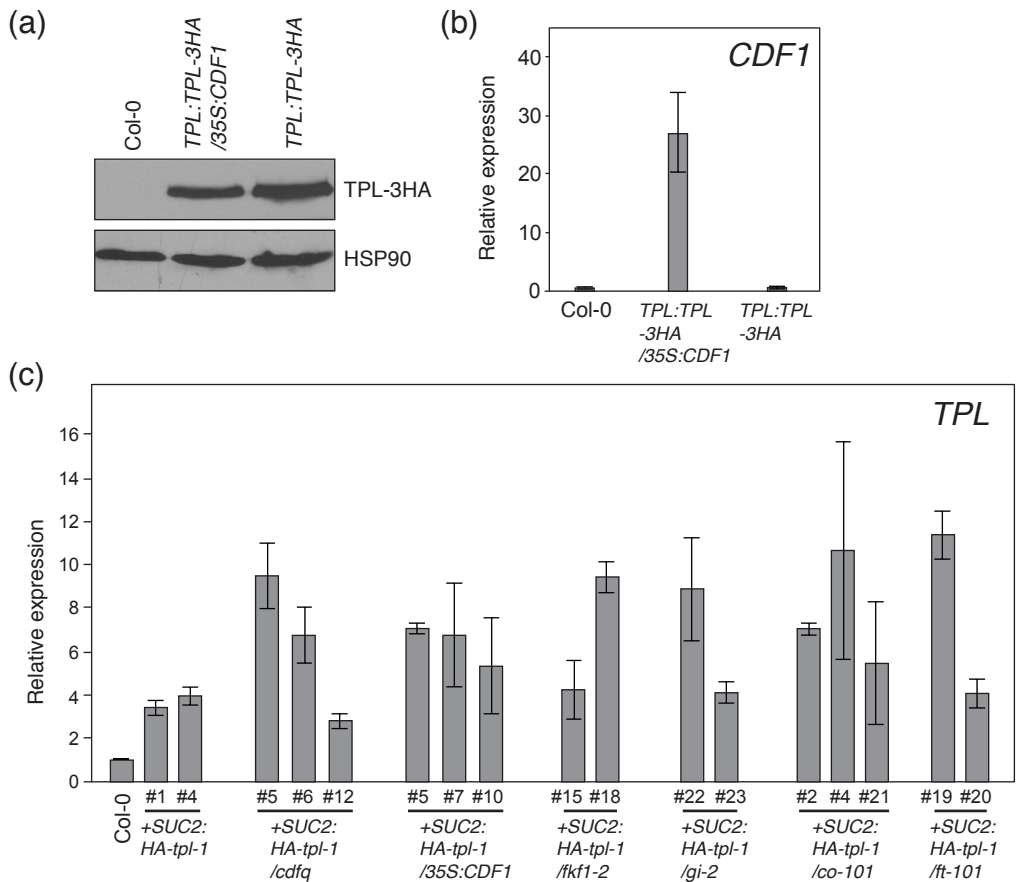


Figure S4. Protein expression level of TPL in *TPL:TPL-3HA* and *TPL:TPL-3HA/35S:CDF1* transgenic line, *CDF1* gene expression in *TPL:TPL-3HA/35S:CDF1* transgenic line, and *TPL* gene expression in *SUC2:HA-tpi-1* transgenic lines. (a) Protein expression levels of TPL-3HA in Col-0, *TPL:TPL-3HA*, and *TPL:TPL-3HA/35S:CDF1*. The long-day grown 14-day-old seedlings were harvested at the ZT12 time point. HSP90 was used as a loading control. (b) Gene expression analysis of *CDF1* in Col-0, *TPL:TPL-3HA*, and *TPL:TPL-3HA/35S:CDF1* plants. The long-day grown 14-day-old seedlings were harvested at the ZT4 time point. (c) Gene expression analysis of *TPL* in *SUC2:HA-tpi-1* transgenic lines. The long-day grown 14-day-old seedlings were harvested at the ZT12 time point. For (b) and (c), means \pm SEM were calculated from three independent experiments.

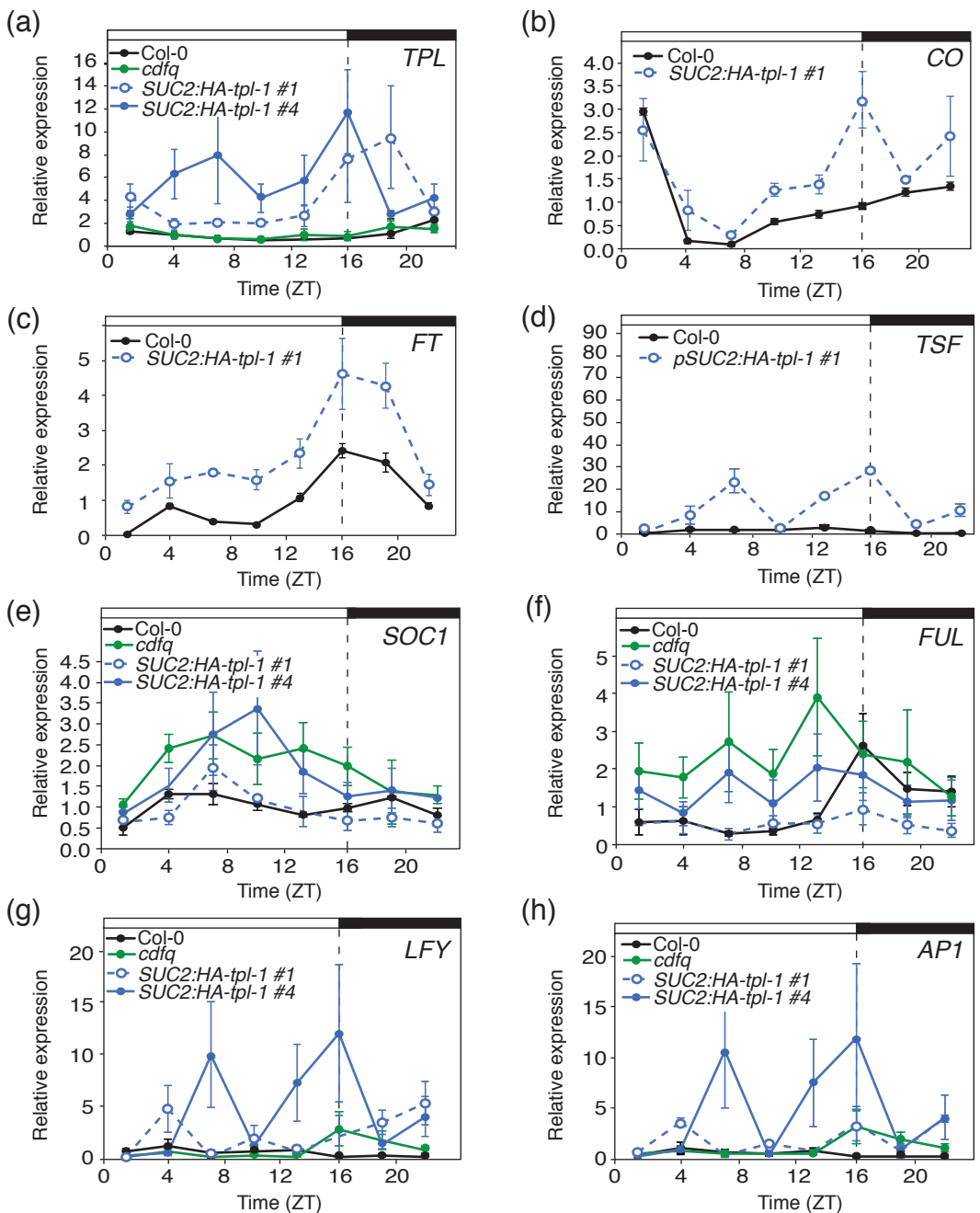


Figure S5. Gene expression profiles of *TPL*, *LFY*, *AP1*, *FUL*, and *SOC1* in WT, *cdfq* mutants, and *SUC2:HA-tpl-1* transgenic lines. (a,e,f,g,h) Diurnal gene expression analysis of *TPL*, *SOC1*, *FUL*, and *AP1* in Col-0, *cdfq*, and *SUC2:HA-tpl-1* plants. Experiments were performed on 2-week-old seedlings grown in long days, with 3-hour resolution. Means \pm SEM were calculated from four independent experiments. (b,c,d) Diurnal gene expression analysis of *CO*, *FT*, and *TSF* in Col-0 and the *SUC2:HA:tpl-1* #1 transgenic line.

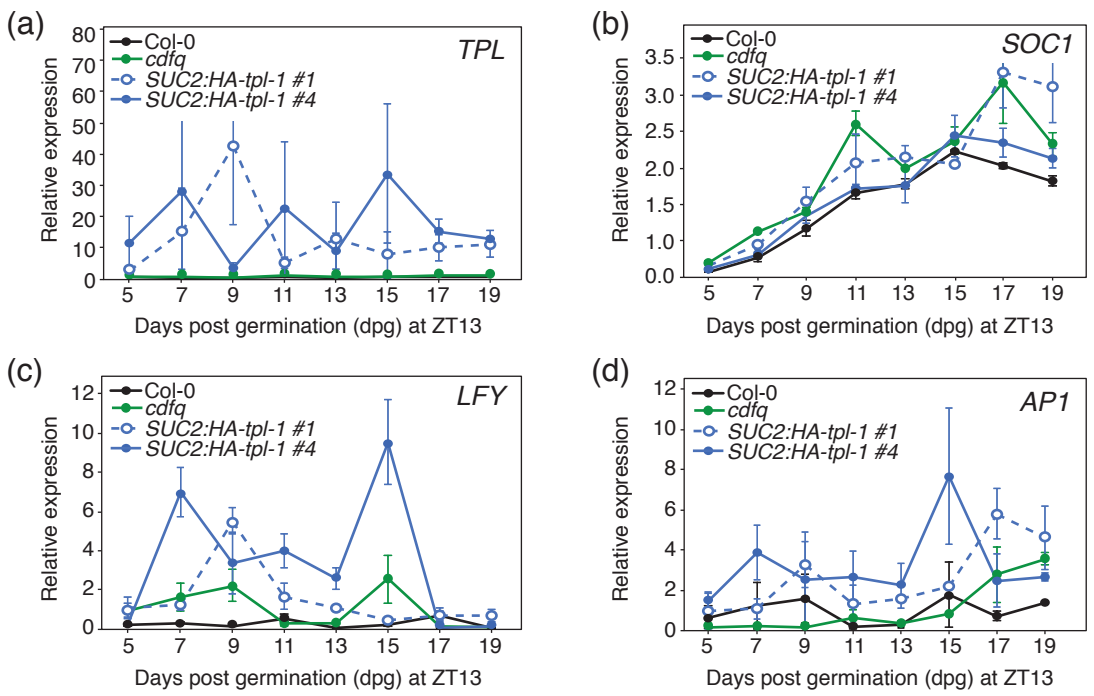


Figure S6. Gene expression levels of *TPL*, *SOC1*, *LFY*, and *AP1* over developmental time in WT, *cdfq* mutants, and *SUC2:HA-tp1-1* transgenic lines. (a,b,c,d) Gene expression analysis of *TPL* (a), *SOC1* (b), *LFY* (c), and *AP1* (d) in Col-0, *cdfq*, and *SUC2:HA-tp1-1* plants over developmental time (days post germination). Plants were harvested over time from 5-days to 19-days old at the ZT13 time point of long days. Means \pm SEM were calculated from four independent experiments.