

Supplementary Information

Protease resistance of porcine acidic mammalian chitinase under gastrointestinal conditions implies that chitin-containing organisms can be sustainable dietary resources

Eri Tabata¹, Akinori Kashimura¹, Satoshi Wakita¹, Misa Ohno¹, Masayoshi Sakaguchi¹, Yasusato Sugahara¹, Yasutada Imamura¹, Shiro Seki², Hitoshi Ueda³, Vaclav Matoska⁴, Peter O. Bauer^{4,5}, Fumitaka Oyama¹

¹Department of Chemistry and Life Science, Kogakuin University, Hachioji, Tokyo 192-0015, Japan, ²Department of Environmental Chemistry, Kogakuin University, Hachioji, Tokyo 192-0015, Japan, ³Department of Integrative Biology, Graduate School of Natural Science and Technology, Okayama University, Okayama 700-8530, Japan, ⁴Laboratory of Molecular Diagnostics, Department of Clinical Biochemistry, Hematology and Immunology, Homolka Hospital, Roentgenova 37/2, Prague 150 00, Czech Republic, ⁵Bioinova Ltd., Videnska 1083, Prague 142 20, Czech Republic

(a)

AMCase	GAPDH	β -actin	Pep A	Pep C	H ⁺ /K ⁺ -ATPase	Gastrin	Gif	Mucin	Chit1
--------	-------	----------------	-------	-------	----------------------------------------	---------	-----	-------	-------

(b)

TGACTTCACAGGCACCTTCTGCAACCAGGGCAAGTTCCCCCTGATCAACACCCTGAAGGATGCT
CTTGGCCTGAATAGCACAAAGTTGCACCGACCTCCACTACATGGTCTACATGTTCCAGTATGATT
CCACCCACGGCAAGTTCCACGGCACAGTCAAGGCGGAGAACGGGAAGCTTGTCATCTTCTAGGC
GGACTGTTAGTTGCATTCCACCTTTTTCTTGACAAAACCTAACTTGCGCAGAAAAATGAGATGAG
ATTGGCATGGCTGGATCCGGCGGCATCGATTCTTCTTACTACACAGGAAGCCTGAACTGGGTGC
CTGTTTCCGTCGAGGGTTACTGGCAGATTACCTTGGACAGCATCACCGAGTTCCCTCAAGACCCA
CAAGTACGACCCCGCCAGAGGTACCGCTTCGGCGACTTCAGCGTGGCCTTGAGCCCATGGCC
TACTTGAAGCTGCCTACTTTGGCGAGATCAGCATCTGGGTTCACTGACTACTTCACGGCCAT
GGCCAGGAGGGCTGGTTCCCACTGCTGTGTGTGGGGCTGCGGCCACAGTGGGAGAACCACCAC
CTACAAGACGGACCGGTGGTCTCTTCTATTAACAATATCGCTGAAAATGTCAACCACAGGACGT
ACTGGCAGTTTCTGAGTGGCCAAACGCCCTTAAACGAAGGAGTTGCGGAATGGATGGAGGAGGA
AGAAGAAGCATATGGATGGATGGACTTCGGCCGCCGAGTGCTGAGGAAGGAGACCAGCGTCCCC
TAGAACCAGCTCCAGACCACAACCTGAAGACACAGTTTGATCGGCTTAAAGCGGAAGCAGGCA
CCTATAACCTGACCATCAGTGAAGTTAGTGTGATTGATGCACCATTTCCCTTCCCTGCTCAGCG
GATCCGTCAACTCAGCCATCAGGTTTCTGCGCAAATATGGCTTTGATGGCCTTGACCTTG

Figure S1. Single standard DNA molecule used for qPCR. (a) Schematic representation of the standard DNA molecule. (b) Nucleotide sequence of the single standard DNA. The single standard DNA, 956 bases long, contained cDNA fragments of AMCase, GAPDH, β -actin, pepsinogen A (Pep A), pepsinogen C (Pep C), H⁺/K⁺-ATPase, Gastrin, gastric intrinsic factor (Gif), Mucin and Chit1 in a one-to-one ratio. Primers for qPCR in each target DNA region are shown in underline.

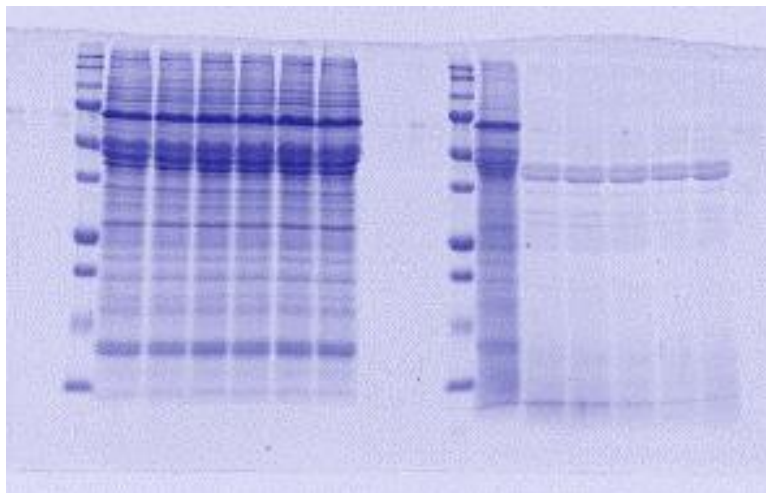
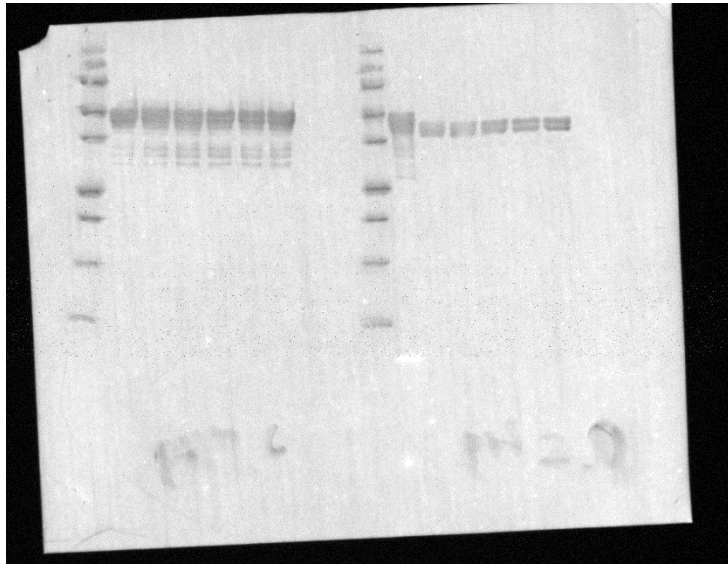


Figure S2. Full-length gel image shown in Fig. 3a. Full-length gel images of SDS-PAGE and CBB staining.

(a)



(b)

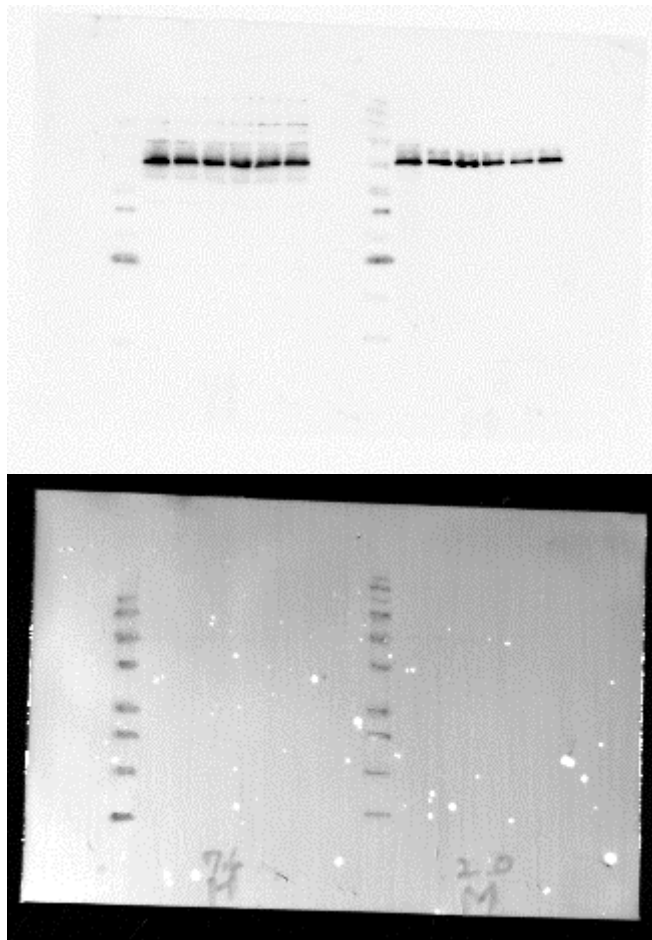


Figure S3. Full-length gel and blots shown in Fig. 3b and c. (a) Western blotting using anti-pepsin and molecular weight markers. (b) Western blotting using anti-AMCase and its molecular weight markers.

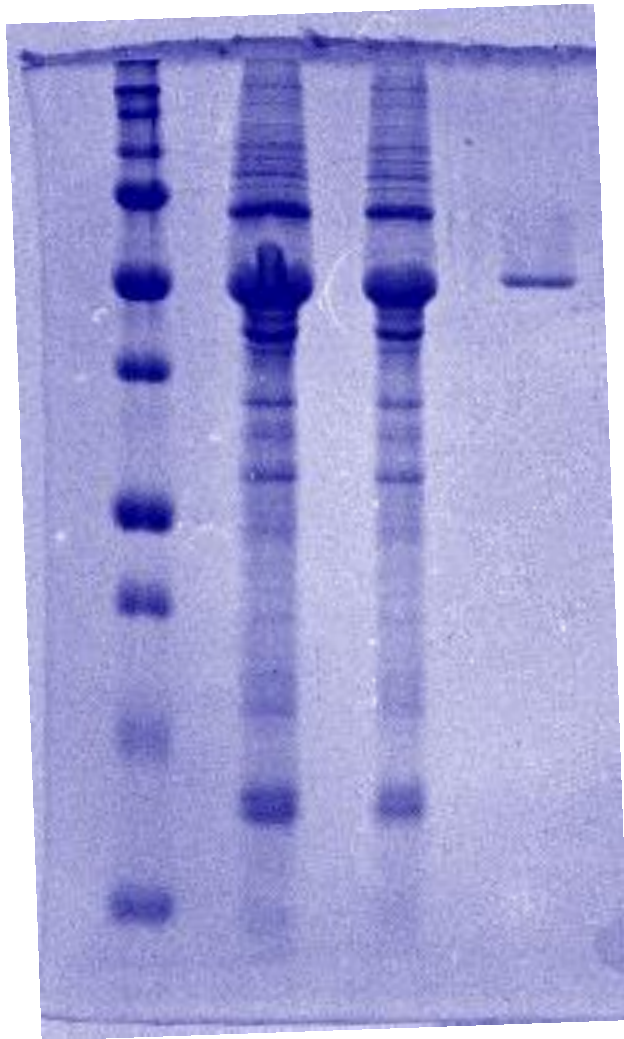


Figure S4. Full-length gel image shown in Fig. 4. Full-length gel image of SDS-PAGE and CBB staining.

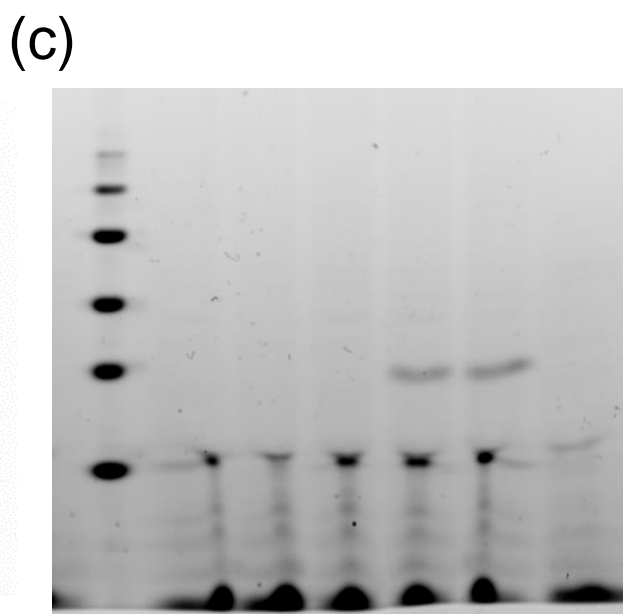
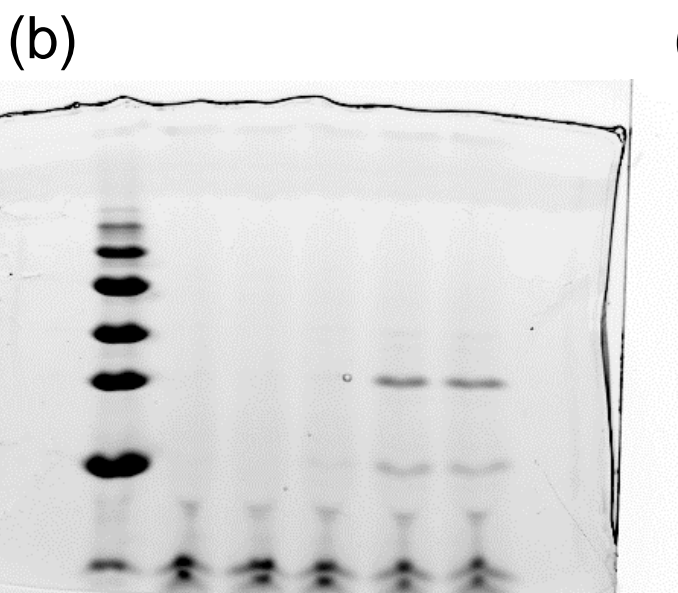
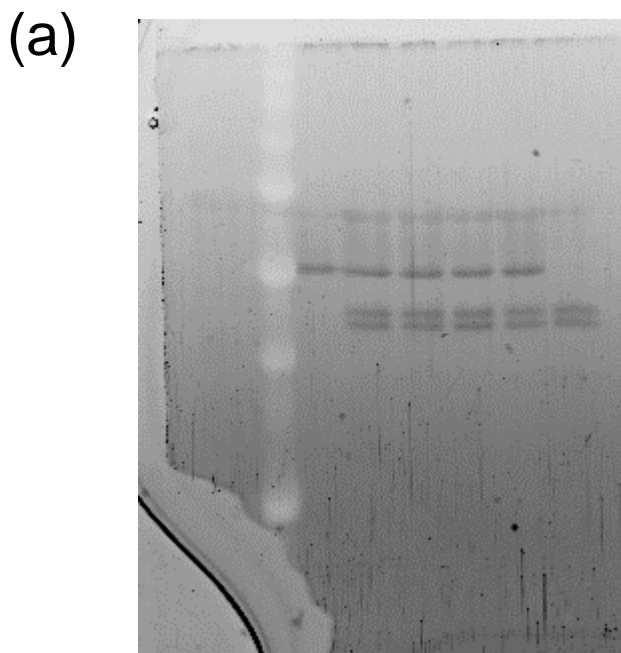
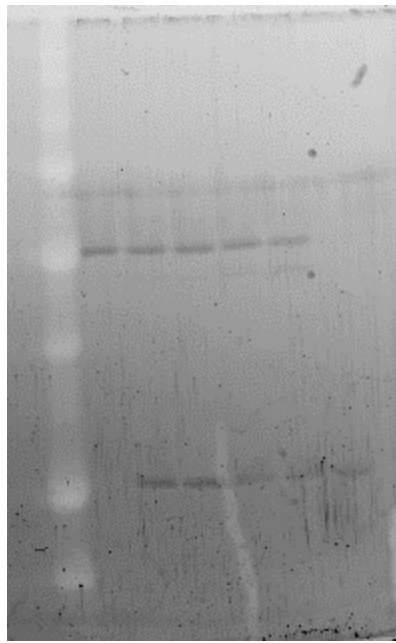
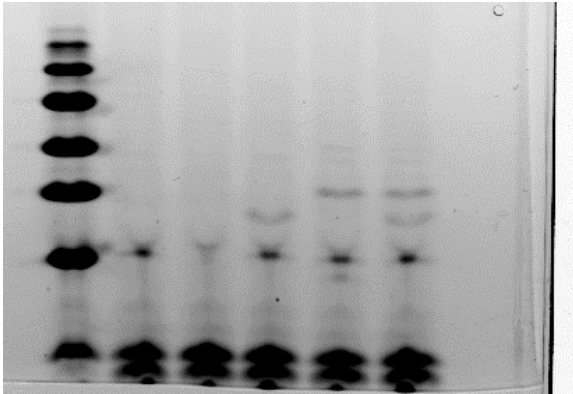


Figure S5. Full-length gel and blots shown in Fig. 5. (a) Full-length gel images of SDS-PAGE and SYPRO Ruby staining in Fig. 5a. (b and c) Full-length gel images of FACE methods in Fig. 5c and d.

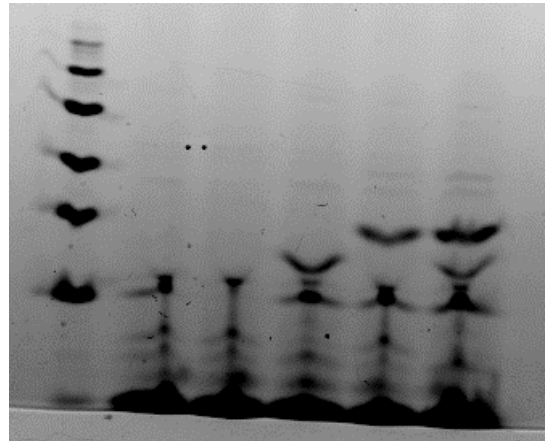
(a)



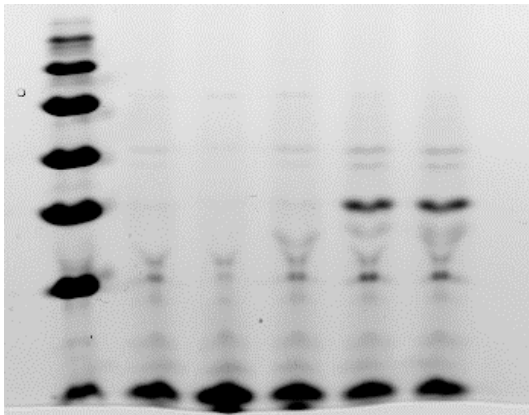
(b)



(d)



(c)



(e)

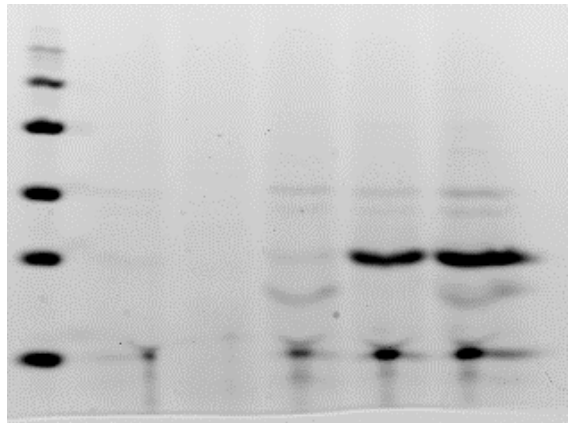
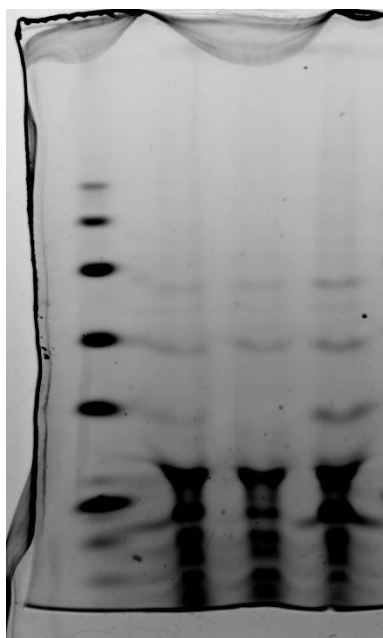


Figure S6. Full-length gel and blots shown in Fig. 6. (a) Full-length gel images of SDS-PAGE and SYPRO Ruby staining in Fig. 6a. (b-e) Full-length gel images of FACE methods in Fig. 6c-f.

(a)



(b)

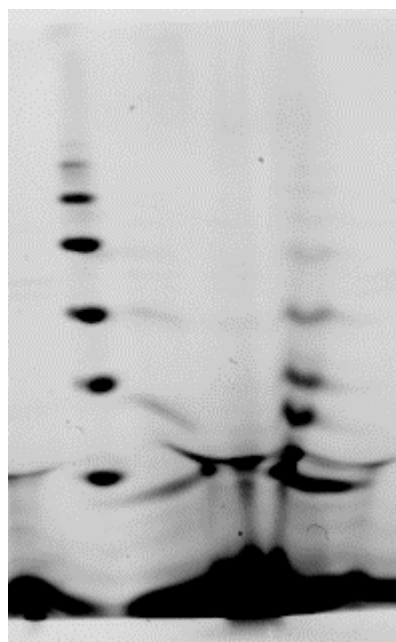


Figure S7. Full-length gel and blots shown in Fig. 7. (a and b) Full-length gel images of FACE methods in Fig. 6a and b.

Table S1. List of qPCR primers.

Gene	Forward primer	Reverse primer
AMCase	TGACTTCACAGGCACTTTCT	CGGTGCAACTTGTGCTATTC
GAPDH	ACCTCCACTACATGGTCTACA	ATGACAAGCTTCCCGTTCTC
β -actin	CTTCTAGGCGGACTGTTAGTTG	AGCCATGCCAATCTCATCTC
Pepsinogen A	GGCGGCATCGATTCTTCTTA	ATTACCTTGGACAGCATCACC
Pepsinogen C	GAGTTCCTCAAGACCCACAAG	GATGCTGATCTCGCCAAAGTA
H ⁺ /K ⁺ -ATPase	CTGGGTTCACTGACTACTTCAC	GAGAACCACCACCTACAAGAC
Gastrin	GGACCGGTGGTCTCTTCTATTA	TCCGCAACTCCTTCGTTTAAG
Gif	ATGGATGGAGGAGGAAGAAGA	TCTGGAGCTCGGTTCTAGG
Mucin	CCACAACCTGAAGACACAGT	GCTGAGCAGAGGAAGGAAAT
Chit1	GTCAACTCAGCCATCAGGTT	CAAGGTCAAGGCCATCAAA