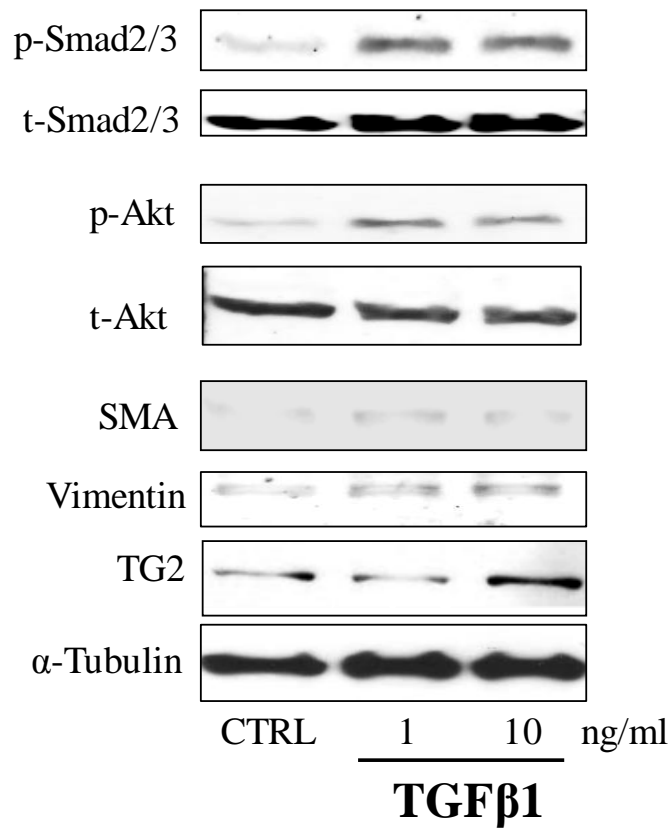


**Supplementary Figure 1. Quantification of the fluorescent signals in the deposition of plasma fibronectin and tubules in co-cultures of HUVECs and human fibroblasts.** Co-culture untreated or treated with R294 (50 $\mu$ M) or the inhibitor vehicle (0.01% DMSO) for 9 days, and incubated with biotinylated pFN (10 $\mu$ g/ml) for 24 h prior to cell fixation as described under Materials and Methods and the Figure 1b legend. The intensity of staining obtained with anti-CD31 antibody and TRITC-pFN deposition was measured in different fields with Image J software and displayed as Integrated mean and Corrected total fluorescence (CTF). CTF = mean Integrated Density– (Area of selected cell X Mean fluorescence of background readings). Student *t* tests were performed to determine statistical relevance; \*\* $P < 0.001$ ; \*\*\* $P < 0.0001$ .



**Supplementary Figure 2.** Representative Western Blot showing Induction of p-Smad 2/3 signalling by TGFβ1 in HUVECs and detection of increases in markers for EndMT via Western blotting.