

Figures S3.1- S3.6 Graphical representation of the detected F_{ST} outlier loci (loci being under natural selection) assuming different hierarchical models for two *Armillaria cepistipes* populations:
 A – ARLEQUIN and B – BAYESCAN.

Figure S3.1 Loci: 17 SSRs
Populations: 1- Carpathian; 2- Alpine

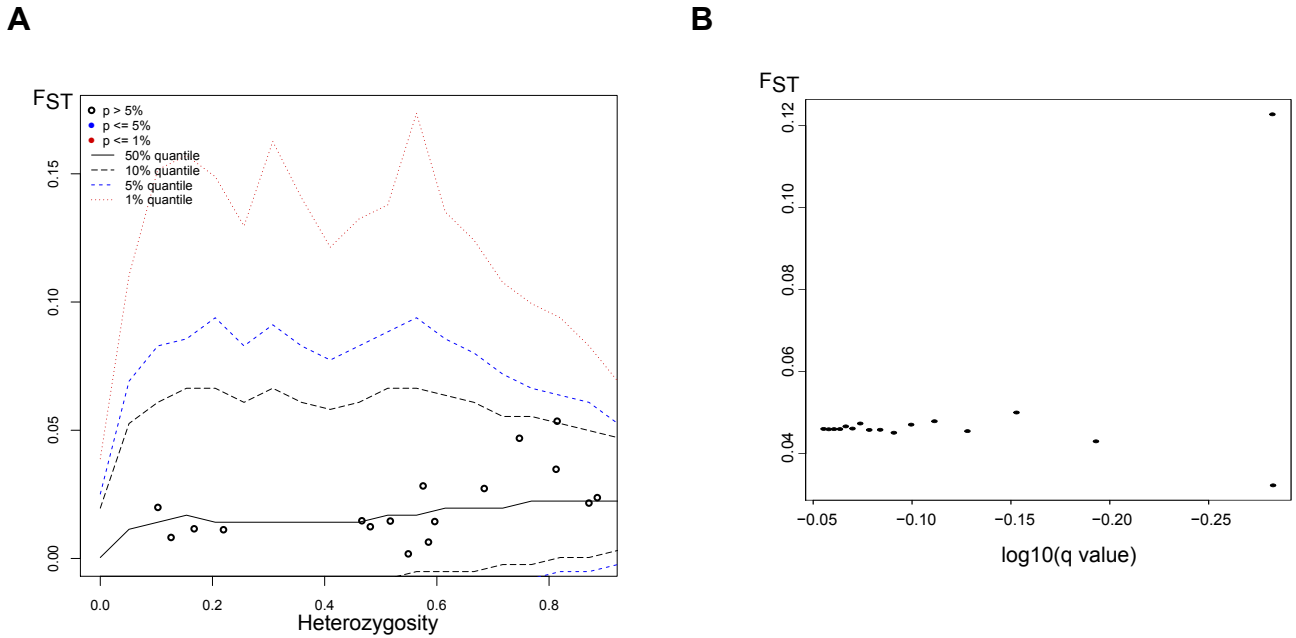


Figure S3.2 Loci: 24 SNPs
Populations: 1- Carpathian; 2- Alpine

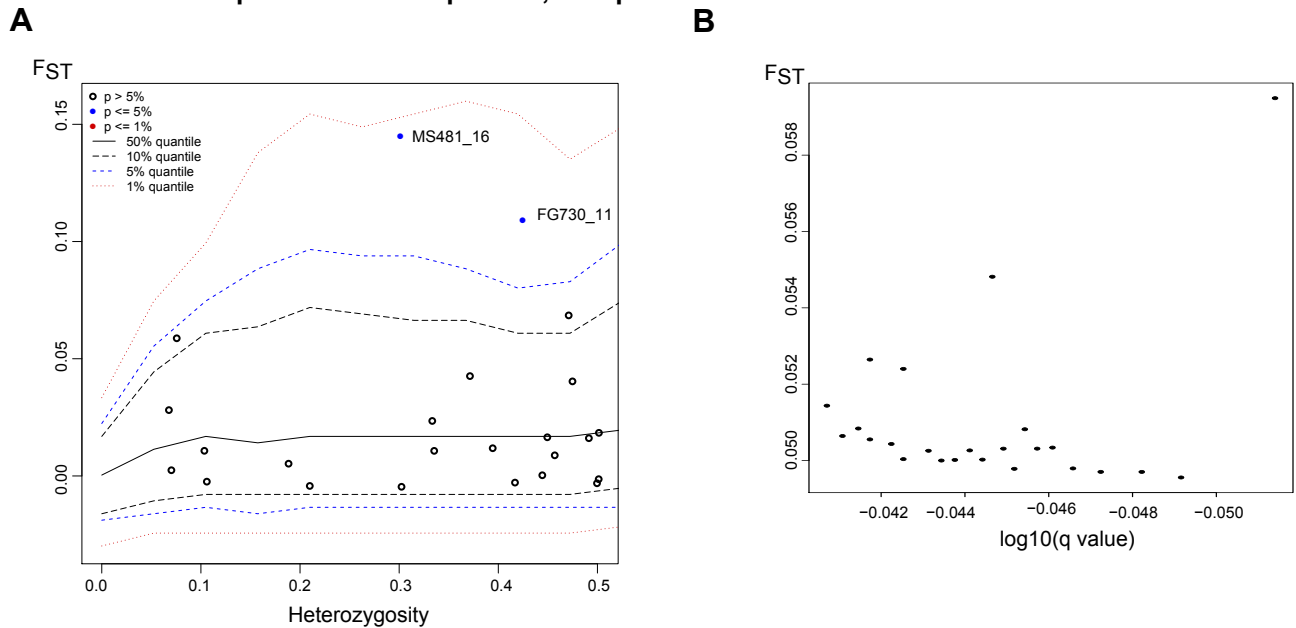


Figure S3.3 Loci: 17 SSRs
Carpathian population with two subpopulations: 1- Beech; 2- Mixed/conifer

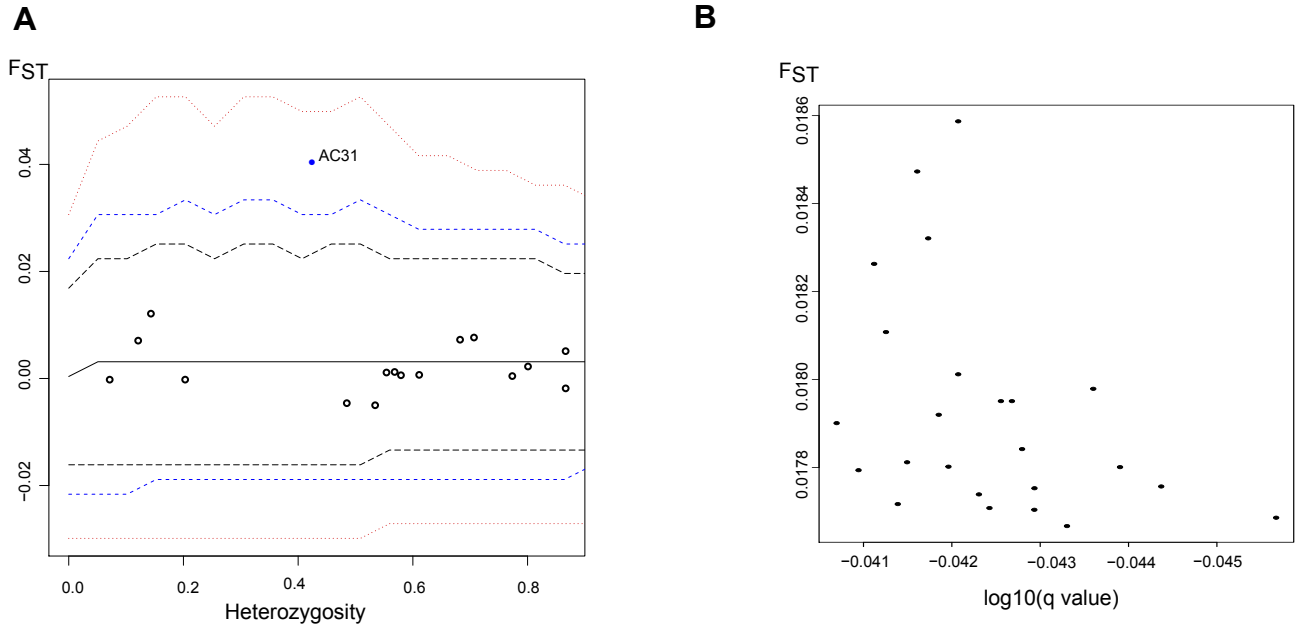


Figure S3.4 Loci: 17 SSRs
Alpine population with two subpopulations: 1- North; 2- South

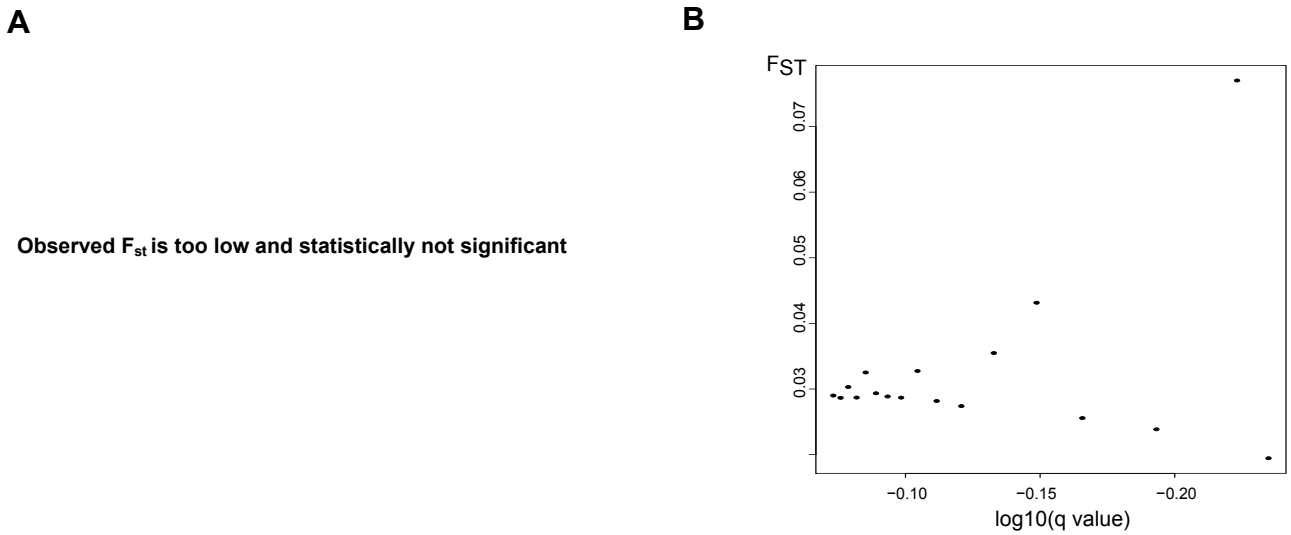


Figure S3.5 Loci: 24 SNPs
Carpathian population with two subpopulations: 1- Beech; 2- Mixed/conifer

A

Observed F_{st} is too low and statistically not significant

B

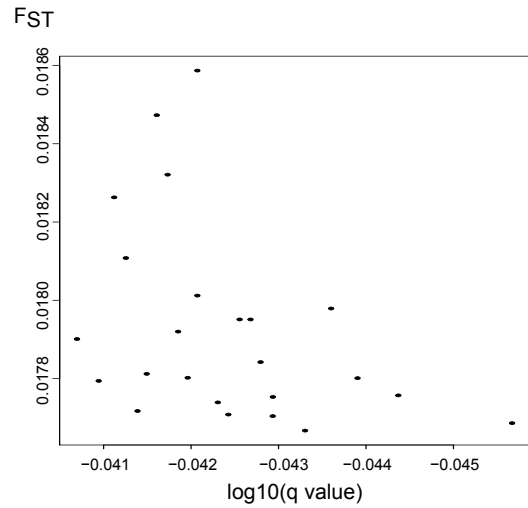
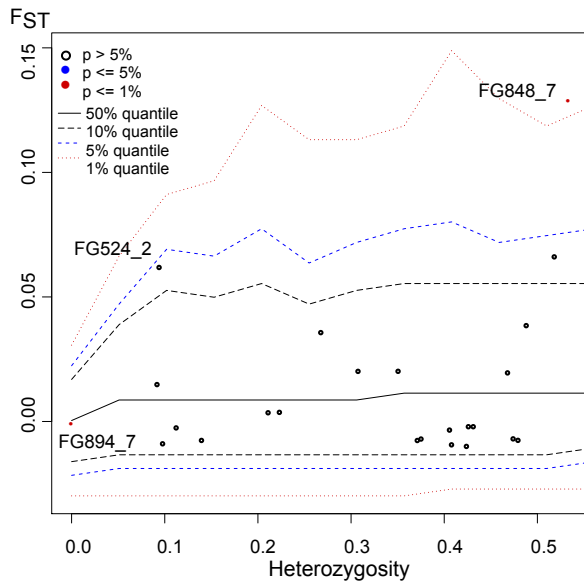


Figure S3.6 Loci: 24 SNPs
Alpine population with two subpopulations: 1- North; 2- South

A



B

