

## **Increased NK cell immunity in a transgenic mouse model of NKp46 overexpression**

Ariella Glasner<sup>1</sup>, Batya Isaacson<sup>1</sup>, Sergey Viukov<sup>2</sup>, Tzahi Neuman<sup>3</sup>, Nehemya Friedman<sup>4,5</sup>

Michal Mandelboim<sup>4,5</sup>, Veronika Sexl<sup>6</sup>, Jacob H Hanna<sup>2</sup> and Ofer Mandelboim<sup>1</sup>

<sup>1</sup>The Lautenberg Center for General and Tumor Immunology, Department of Immunology and Cancer Research, IMRIC, Faculty of Medicine, The Hebrew University Medical School, Jerusalem, Israel.

<sup>2</sup>Department of Molecular Genetics, Weizmann Institute of Science, Rehovot 7610001, Israel.

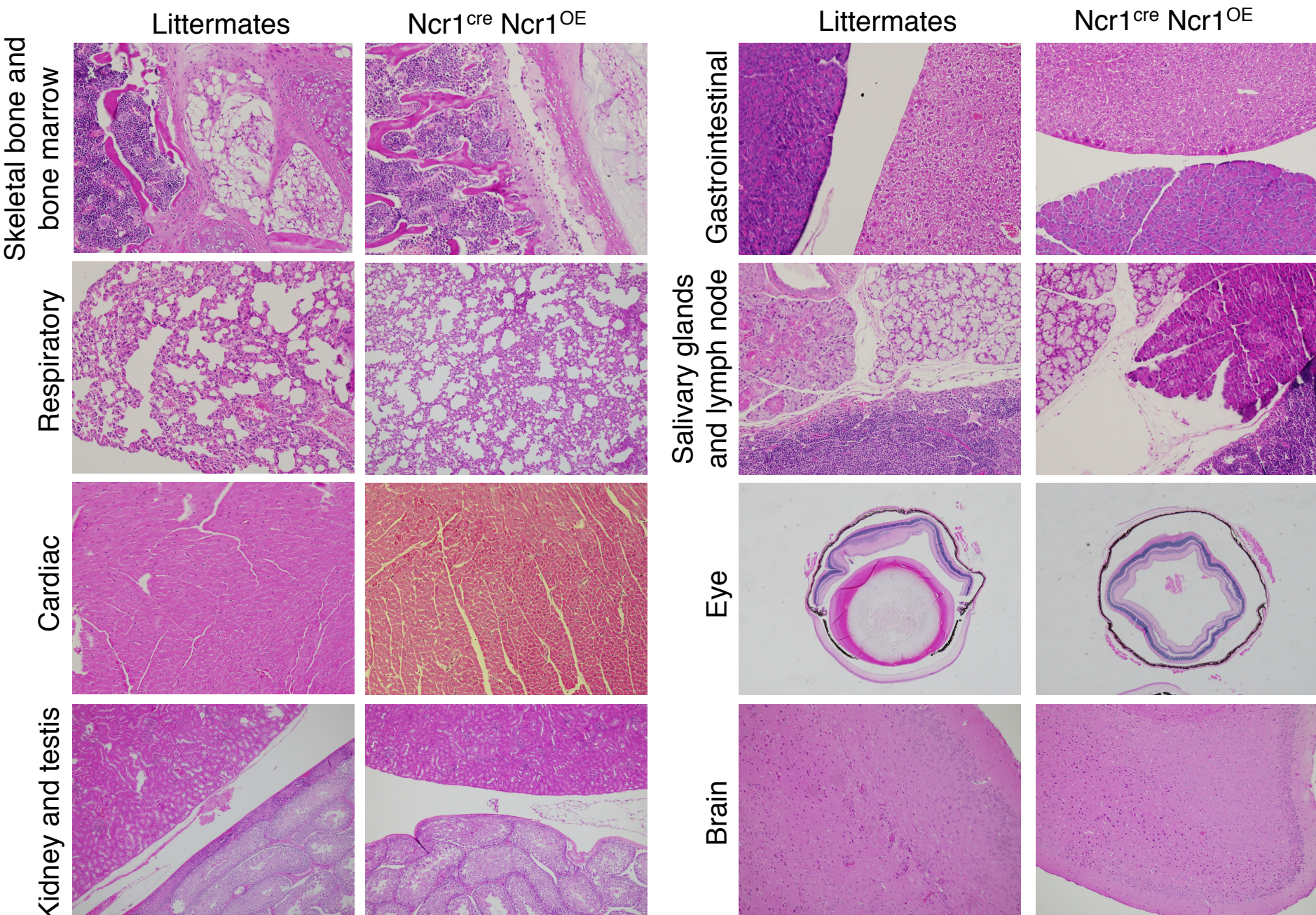
<sup>3</sup>Department of Pathology, Hadassah Medical Organization, The Hebrew University Medical Center, Jerusalem, Israel.

<sup>4</sup>Central Virology Laboratory, Ministry of Health, Chaim Sheba Medical Center, Tel-Hashomer, Ramat-Gan, Israel

<sup>5</sup>Department of Epidemiology and Preventive Medicine, School of Public Health, Sackler Faculty of Medicine, Tel-Aviv University, Tel-Aviv, Israel

<sup>6</sup>Institute of Pharmacology and Toxicology, University of Veterinary Medicine, Vienna, Austria.

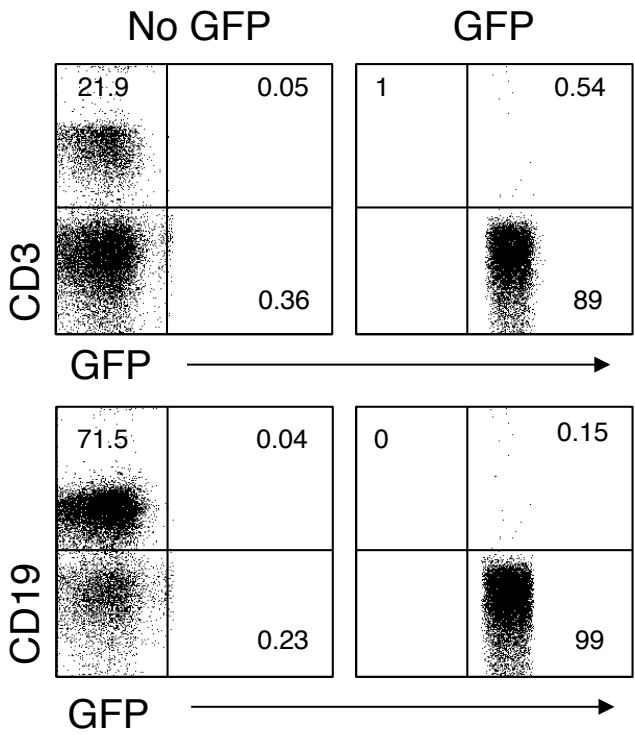
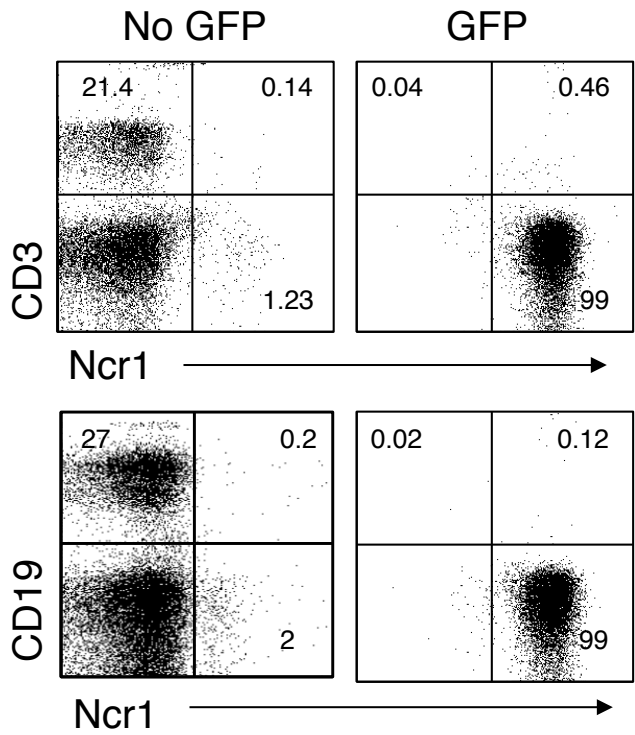
Correspondence should be addressed to Ofer Mandelboim: [oferm@ekmd.huji.ac.il](mailto:oferm@ekmd.huji.ac.il)



**Figure S1. Comparison of the major anatomical systems between  $Ncr1^{cre}$   $Ncr1^{OE}$  and littermate controls**

Samples of the major anatomical systems representative of three  $Ncr1^{cre}$   $Ncr1^{OE}$  TGs and three littermates are shown. 100 or 200 fold magnification was used.

**Figure S1**

**A****B**

**Figure S2. GFP or Ncr1 are not expressed on non-NK lymphocytes**

(A,B) FACS plots depicting CD3 and CD19 expression in GFP (A) or Ncr1 (B) expressing cells in GFP expressing lymphocytes, compared to non-GFP expressing lymphocytes. The plots are representative of two independent stainings. Percentages are indicated.