

Loss of ABHD5 promotes the aggressiveness of prostate cancer cells

Guohua Chen¹, Guoli Zhou², Siddhesh Aras³, Zhenhui He⁴, Stephanie Lucas¹, Izabela Podgorski⁵, Wael Skar¹, James G. Granneman³ and Jian Wang^{1,6,*}

Department of Pathology¹, Center for Molecular Medicine and Genetics³, Department of Pharmacology⁵, and Cardiovascular Research Institute⁶, Wayne State University, Detroit, MI 48201 USA

² Biomedical Research Informatics Core, Clinical and Translational Sciences Institute, Michigan State University, East Lansing, MI 48824 USA

⁴ Department of Laboratory Medicine, Foshan University Medical College, Foshan, Guangdong 528000, China

*** To whom correspondence should be addressed:**

Email: jianwang@med.wayne.edu

Phone: 313-577-9433

Fax: 313-972-8025

Supplementary Figure 1. Effects on phospho-AMPK α and p53 protein expression by ABHD5 knockdown in LNCaP cells.

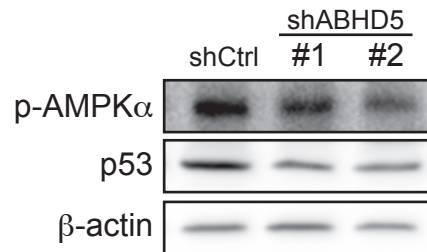
Levels of phospho-AMPK α , p53 and β -actin in the LNCaP cells with or without ABHD5 knockdown were analyzed by Western blotting.

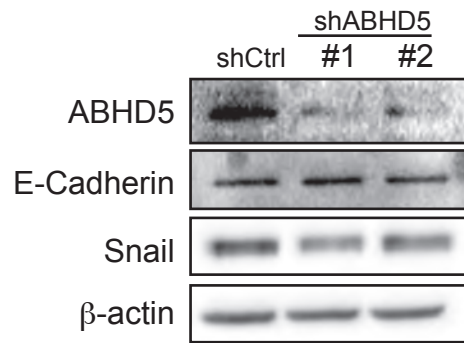
Supplementary Figure 2. Negligible effects on EMT marker expression and cell invasion by ABHD5 knockdown in PC3 cells.

A. Levels of ABHD5, E-Cadherin, Snail and β -actin analyzed by Western Blotting.

B. Cell invasion determined by Boyden Chamber Transwell assay.

Supplementary Figure 1



A**B**