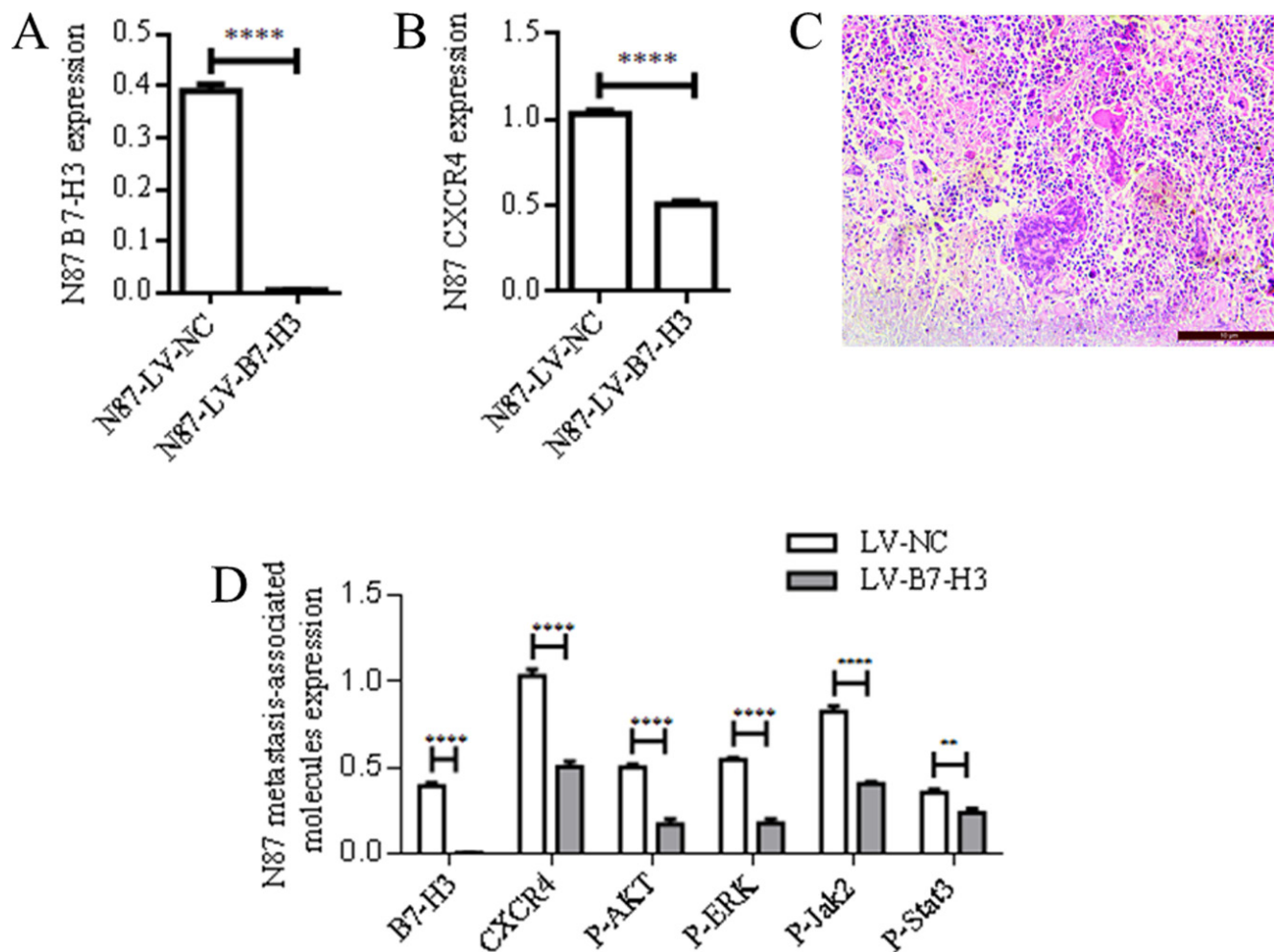


B7-H3 promotes gastric cancer cell migration and invasion

Supplementary Materials



Supplementary Figure 1: Western blotting band densitometric analyses, and spleen metastasis H&E staining. B7-H3 (A) and CXCR4 (B) plasma protein band densitometric analyses. H&E staining of spleen metastases in mice injected with B7-H3-silenced or control N87 cells (Magnification, ×200) (C) Metastasis-associated molecule (B7-H3, CXCR4, p-AKT, p-ERK, p-Jak2, p-Stat3) plasma protein band densitometric analyses (D) * $P < 0.005$, **** $P < 0.0001$.