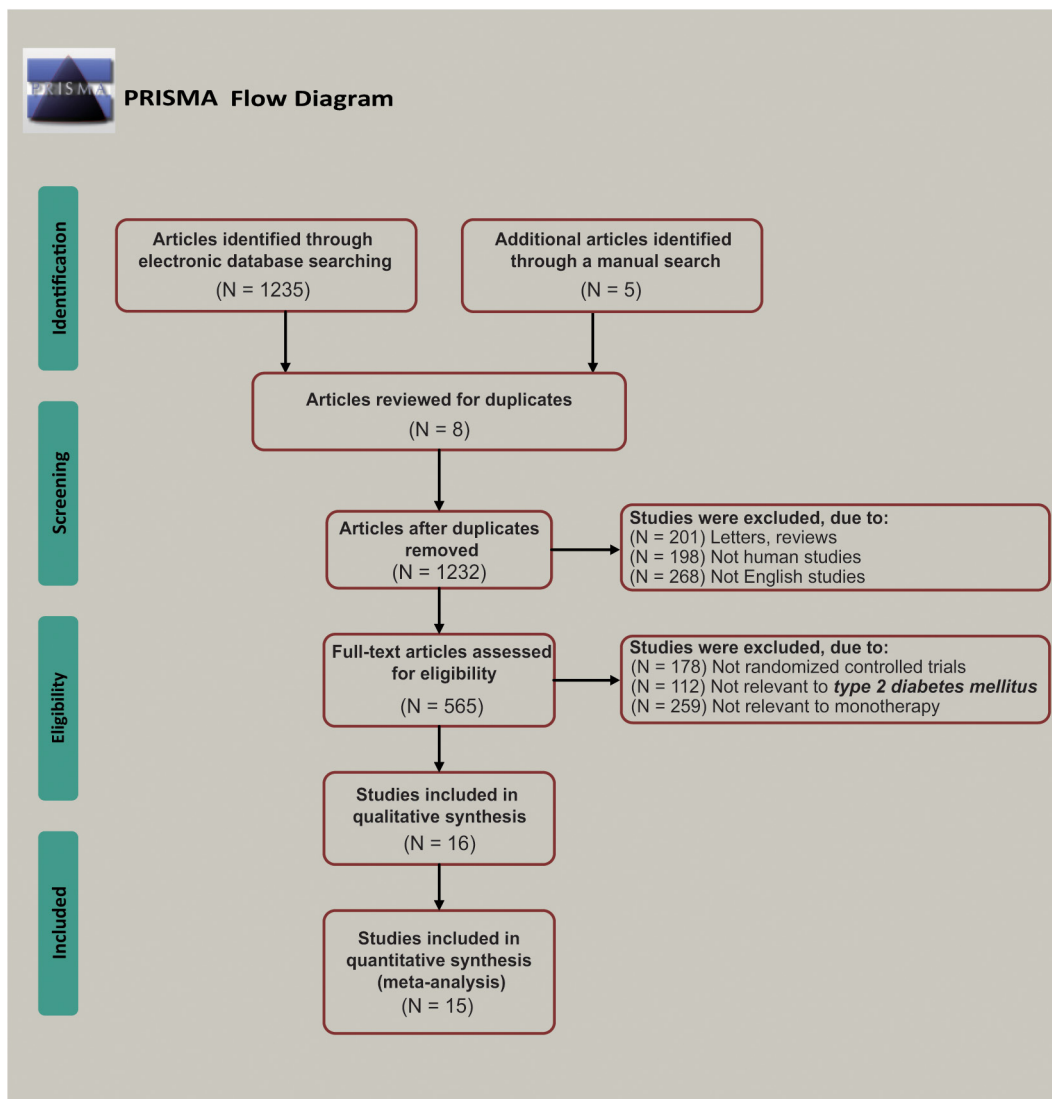
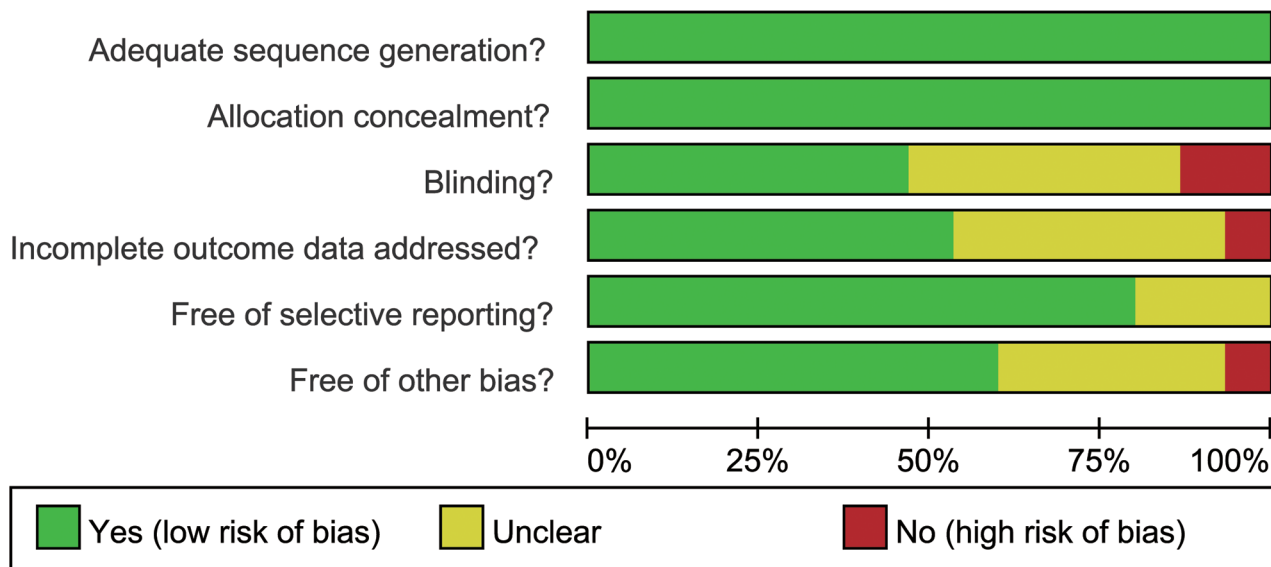


Comparison of twelve single-drug regimens for the treatment of type 2 diabetes mellitus

SUPPLEMENTARY MATERIALS



Supplementary Figure 1: Flow chart of the literature search and study selection process.



Supplementary Figure 2: Cochrane system bias evaluation of included studies.

Appendix Table 1A: The baseline characteristics for included studies.

Appendix Table 1B: The baseline characteristics for included studies.

See Supplementary File 1

Appendix Table 2: Weighted mean difference (WMD) and 95%CI of twelve treatment modalities of FPG, HDL, LDL and Triglycerides.

See Supplementary File 2

Appendix Table 3: SUCRA values of eleven treatment modalities under six endpoint outcomes after sensitivity analysis

Treatments	SUCRA values (%)					
	FPG	HbA1c	TC	HDL	LDL	Triglycerides
A	75.10	71.00	53.50	73.71	76.83	33.88
B	54.60	67.73	55.88	57.14	63.67	29.62
C	45.30	37.73	44.25	45.57	47.17	80.88
D	33.00	48.27	15.62	39.57	30.17	83.88
E	65.70	79.00	69.50	76.00	76.33	36.25
F	74.10	61.09	80.88	52.29	56.17	73.75
G	NR	60.09	NR	NR	NR	NR
I	79.60	95.73	NR	NR	NR	NR
J	23.80	11.73	NR	NR	NR	NR
K	55.80	32.00	68.25	56.71	NR	73.12
L	43.70	35.00	61.62	NR	NR	36.38

Notes: SUCRA=surface under the cumulative ranking curves; NR=not report; FPG=fasting plasma glucose; HbA1c=glycated hemoglobin; TC=total cholesterol; HDL=high density lipoprotein; LDL=low density lipoprotein; A=Glibenclamide; B=Glimepiride; C=Pioglitazone; D=Rosiglitazone; E=Repaglinide; F=Metformin; G=Sitagliitin; I=Liraglutide; J= Acarbose; K=Benfluorex; L=Glipizide; Bold font, the SUCRA is relatively higher when compared with other interventions.

Appendix Table 4: SUCRA values of twelve treatment modalities under six endpoint outcomes after meta regression analysis

Treatments	SUCRA values (%)					
	FPG	HbA1c	TC	HDL	LDL	Triglycerides
A	75.46	68.74	54.96	57.85	60.91	38.13
B	57.81	68.06	58.13	54.50	52.04	35.41
C	45.27	40.47	56.33	53.54	48.76	82.63
D	34.19	50.68	48.74	50.75	36.88	85.30
E	65.60	78.36	19.09	68.64	69.66	43.44
F	71.56	61.47	63.50	54.02	55.10	77.00
G	46.23	48.73	73.51	59.43	46.13	22.14
H	50.16	59.11	40.40	46.13	80.52	45.84
I	80.65	95.15	NR	NR	NR	NR
J	24.37	12.40	NR	NR	NR	NR
K	54.64	32.80	70.90	55.14	NR	76.52
L	44.08	34.03	64.42	NR	NR	43.59

Notes: SUCRA=surface under the cumulative ranking curves; NR=not report; FPG=fasting plasma glucose; HbA1c=glycated hemoglobin; TC=total cholesterol; HDL=high density lipoprotein; LDL=low density lipoprotein; A=Glibenclamide; B=Glimepiride; C=Pioglitazone; D=Rosiglitazone; E=Repaglinide; F=Metformin; G=Sitagliitin; H=Exenatide; I= Liraglutide; J= Acarbose; K=Benfluorex; L=Glipizide; Bold font, the SUCRA is relatively higher when compared with other interventions.