

SUPPLEMENTAL MATERIAL

Appendix

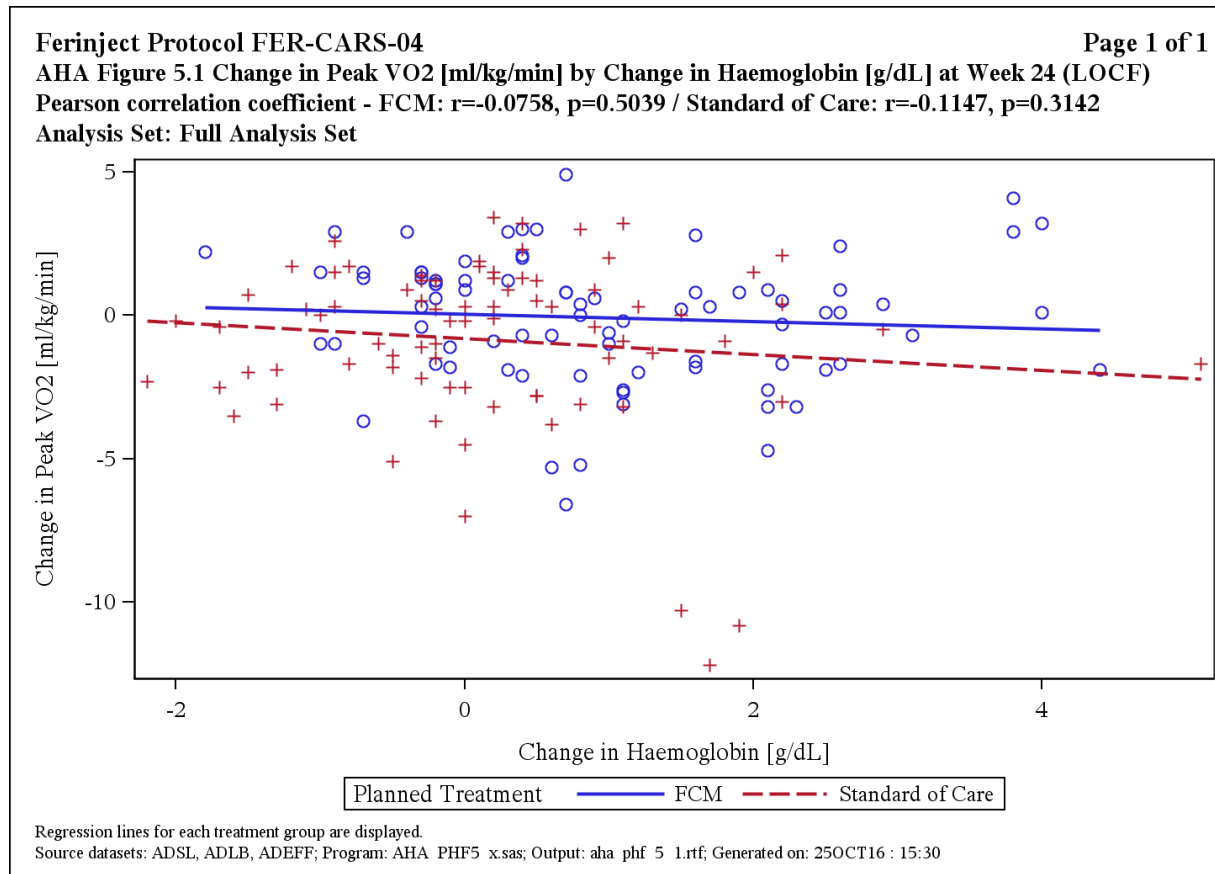
Participants of the EFFECT-HF study:

Steering Committee: Dirk J. van Veldhuisen (chair); Piotr Ponikowski (co-chair), Alain Cohen-Solal, Michael Böhm, Marco Metra, Peter van der Meer, Artem Doletsky, Adriaan A. Voors, Iain Macdougall, and Viviane Conraads and Henry Krum.

Data Safety and Monitoring Board: Henry Dargie (chair), Rudolf Wuthrich, and Peter Shabe (Statistician). Endpoint Adjudication Committee: Stefan D. Anker (Chair), Gerasimos Filippatos, Frank Ruschitzka.

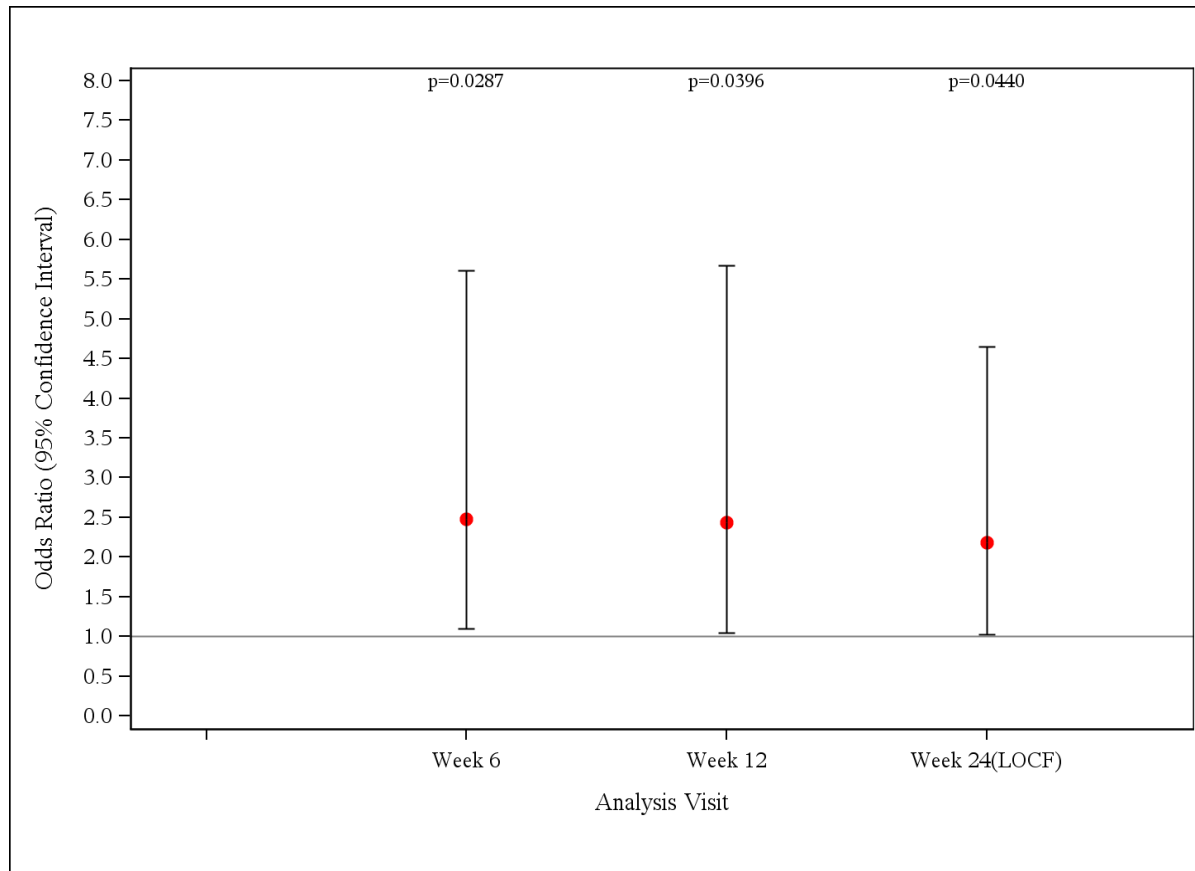
Supplementary Figure 1: **Association between the change in Peak VO₂ and the change in Hemoglobin at week 24 (LOCF).**

There was no association between the effect of FCM on Peak VO₂ and the effect on Hemoglobin ($r=-0.0758$, $p=0.51$).



Supplementary Figure 2: **Effect of FCM on NYHA functional class**

Values are changes compared to baseline and relative to the change in the control (standard of care) group, whereby an Odds ratio (OR) > 1.0 means effect in the FCM group is better than the standard of care group.



Supplementary Figure 3: **Effect of FCM on PGA score.**

Values are changes compared to baseline and relative to the change in the control (standard of care) group, whereby an Odds ratio (OR) > 1.0 means effect in the FCM group is better than the standard of care group.

