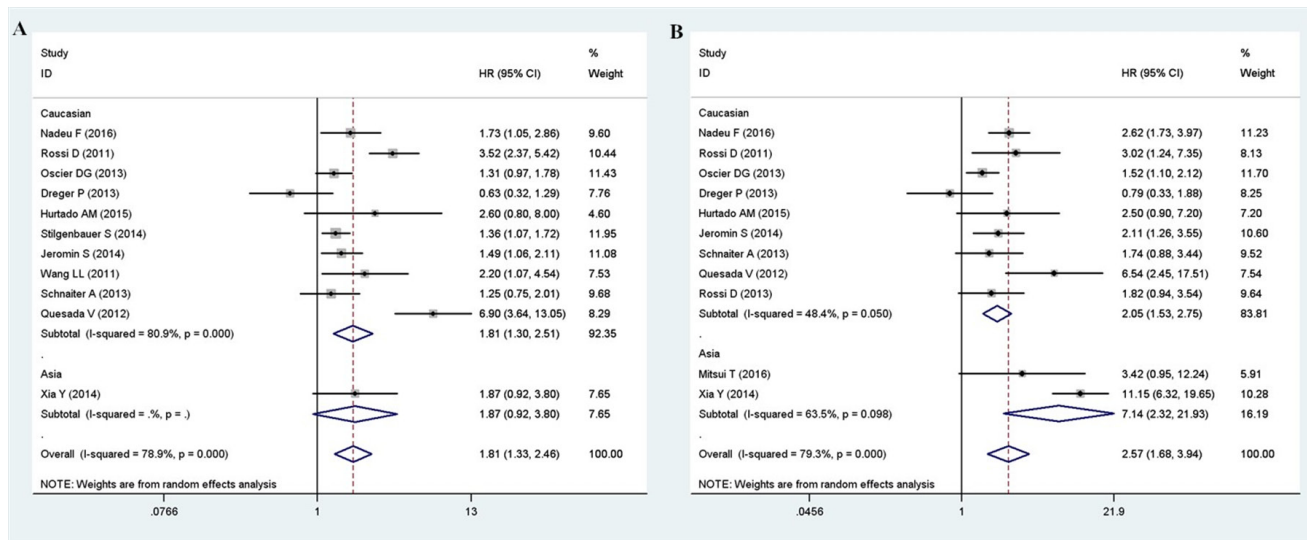
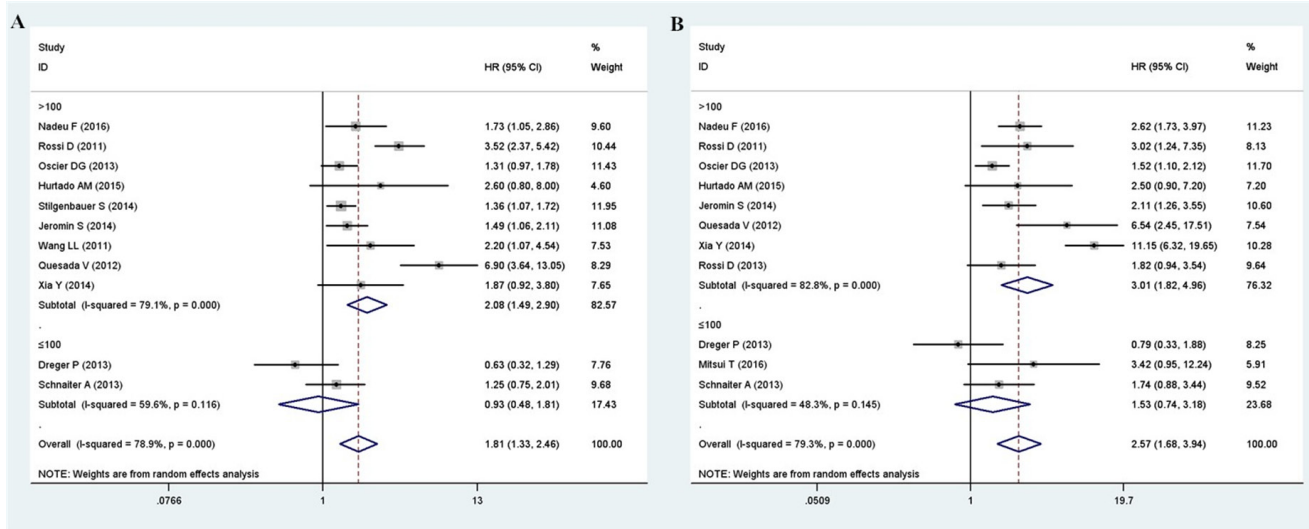


SF3B1 mutation is a prognostic factor in chronic lymphocytic leukemia: a meta-analysis

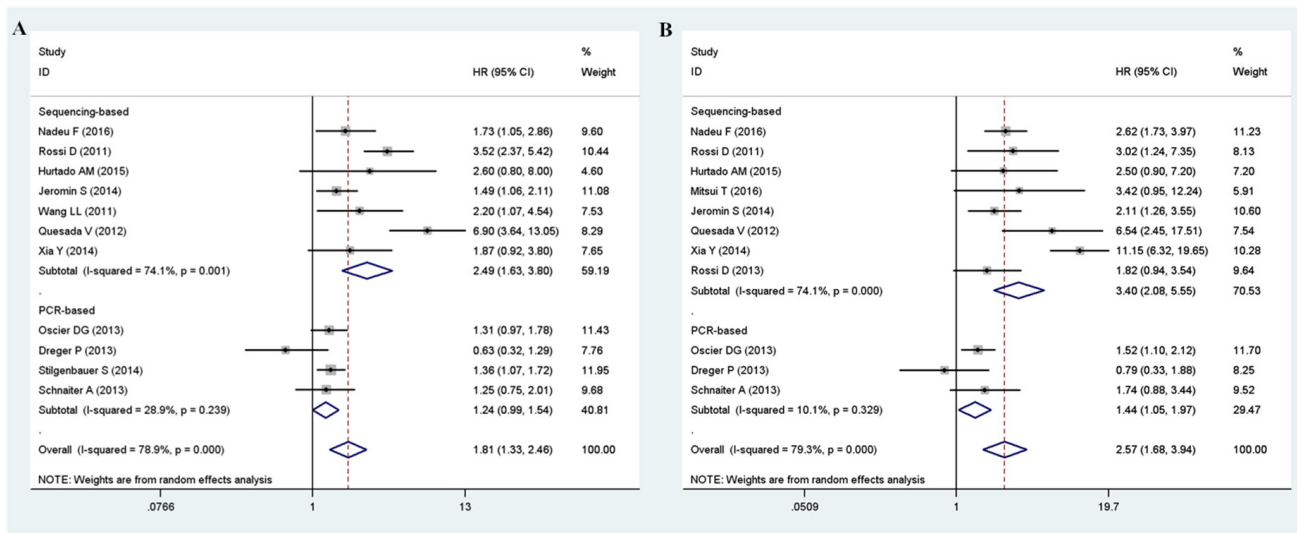
SUPPLEMENTARY MATERIALS



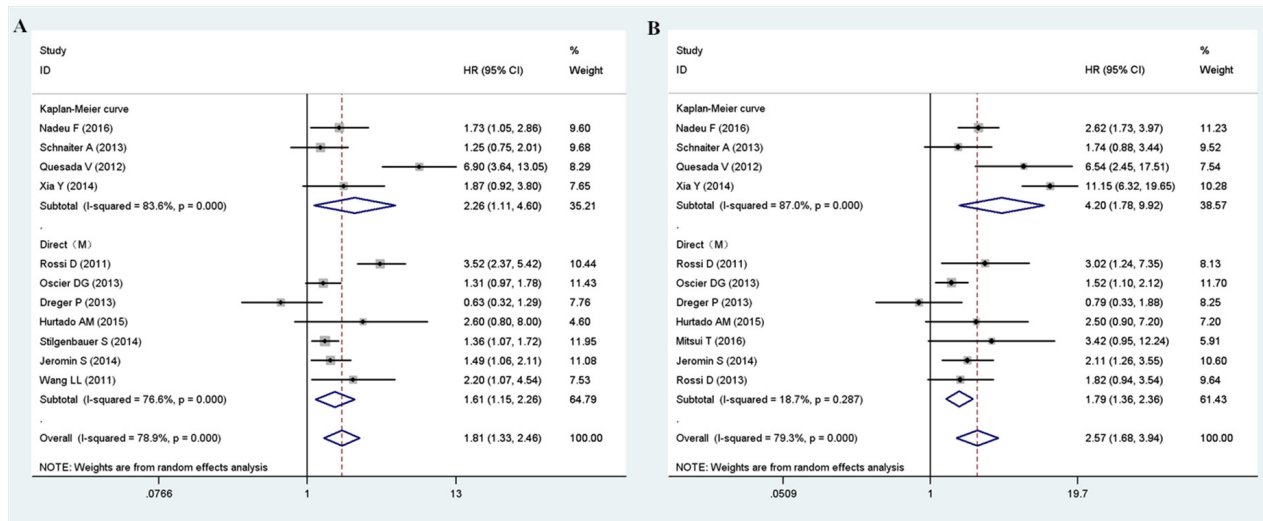
Supplementary Figure 1: Patients source subgroup analysis of the association between SF3B1 mutation and PFS (A) / OS (B) of CLL.



Supplementary Figure 2: Sample size subgroup analysis of the association between SF3B1 mutation and PFS (A) / OS (B) of CLL.



Supplementary Figure 3: Detection methods subgroup analysis of the association between SF3B1 mutation and PFS (A) / OS (B) of CLL.



Supplementary Figure 4: Data extraction subgroup analysis of the association between SF3B1 mutation and PFS (A) / OS (B) of CLL.