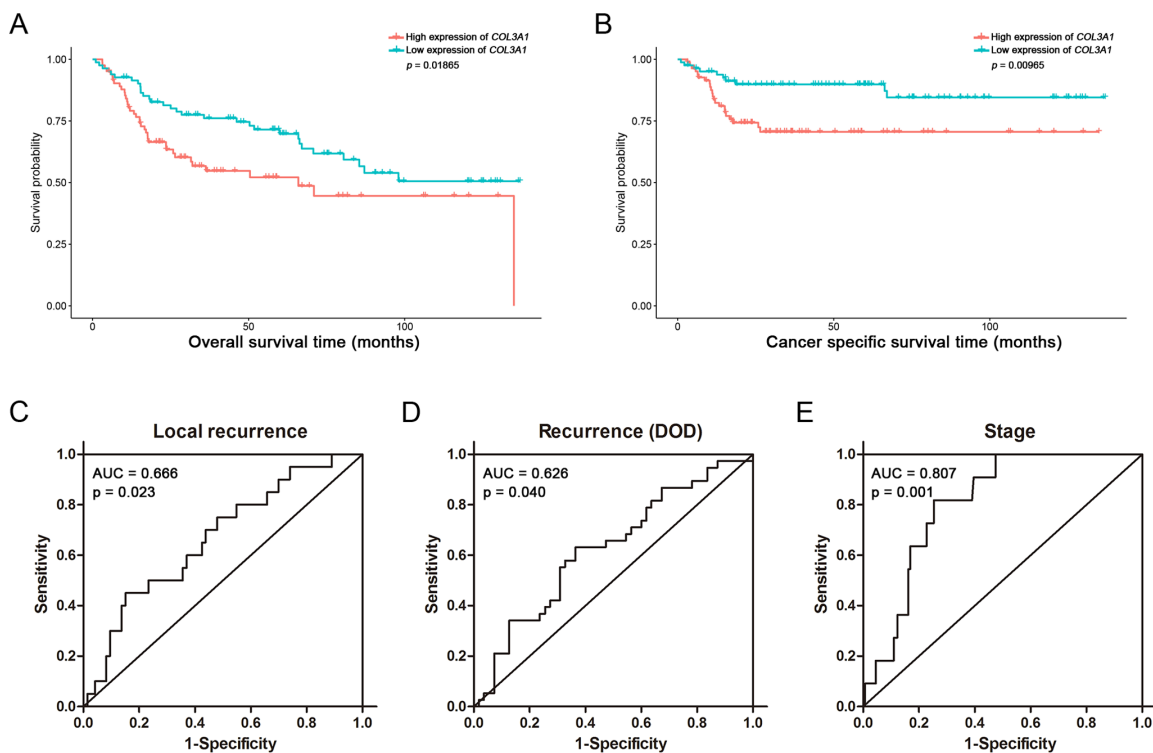
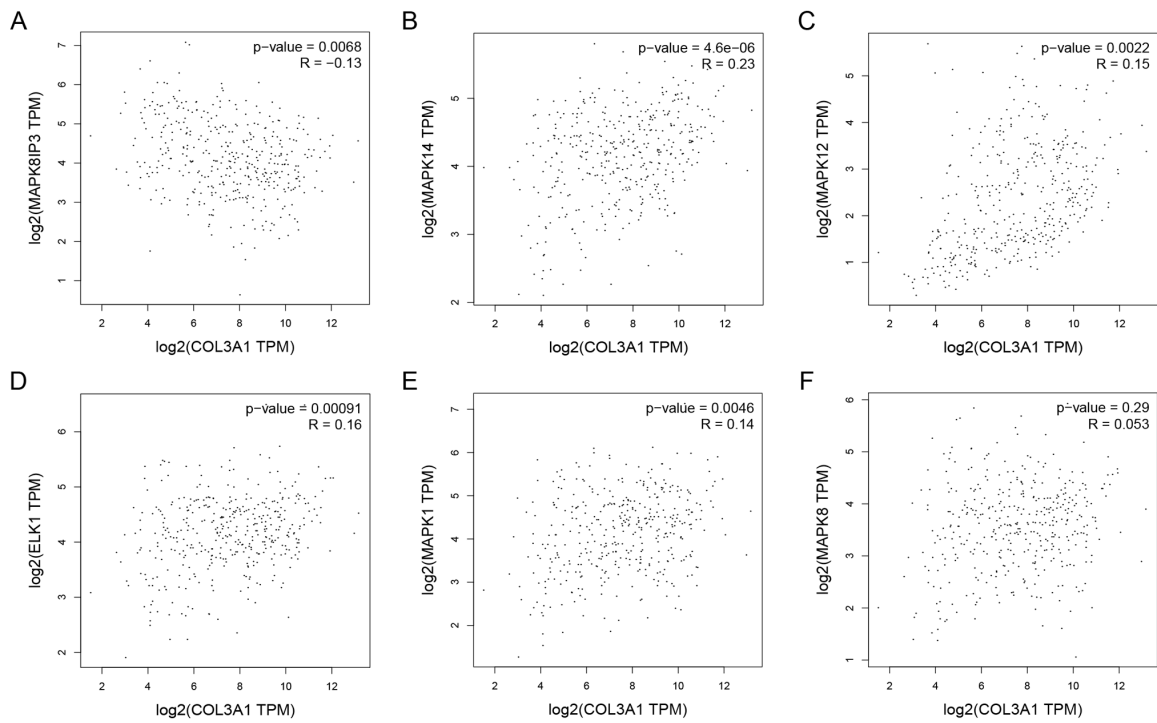


Overexpression of COL3A1 confers a poor prognosis in human bladder cancer identified by co-expression analysis

SUPPLEMENTARY MATERIALS



Supplementary Figure 1: Validation of correlation of the correlation between expression of COL3A1 and clinical features. (A, B) Survival analysis of COL3A1 using test set (GSE13507). (C-E) ROC curves of the expression of COL3A1 and local recurrence, recurrence and tumor stage.



Supplementary Figure 2: Cox regression analysis of the expression of *COL3A1* and key molecules in MAPK pathway. (A) *MAPK8IP3*, (B) *MAPK14*, (C) *MAPK12*, (D) *ELK1*, (E) *MAPK1* and (F) *MAPK8*.

Supplementary Table 1: Enriched biological process of genes in blue module (terms including COL3A1 with highlighted color)

See Supplementary File 1

Supplementary Table 2: Enriched KEGG pathways of genes in blue module

See Supplementary File 2