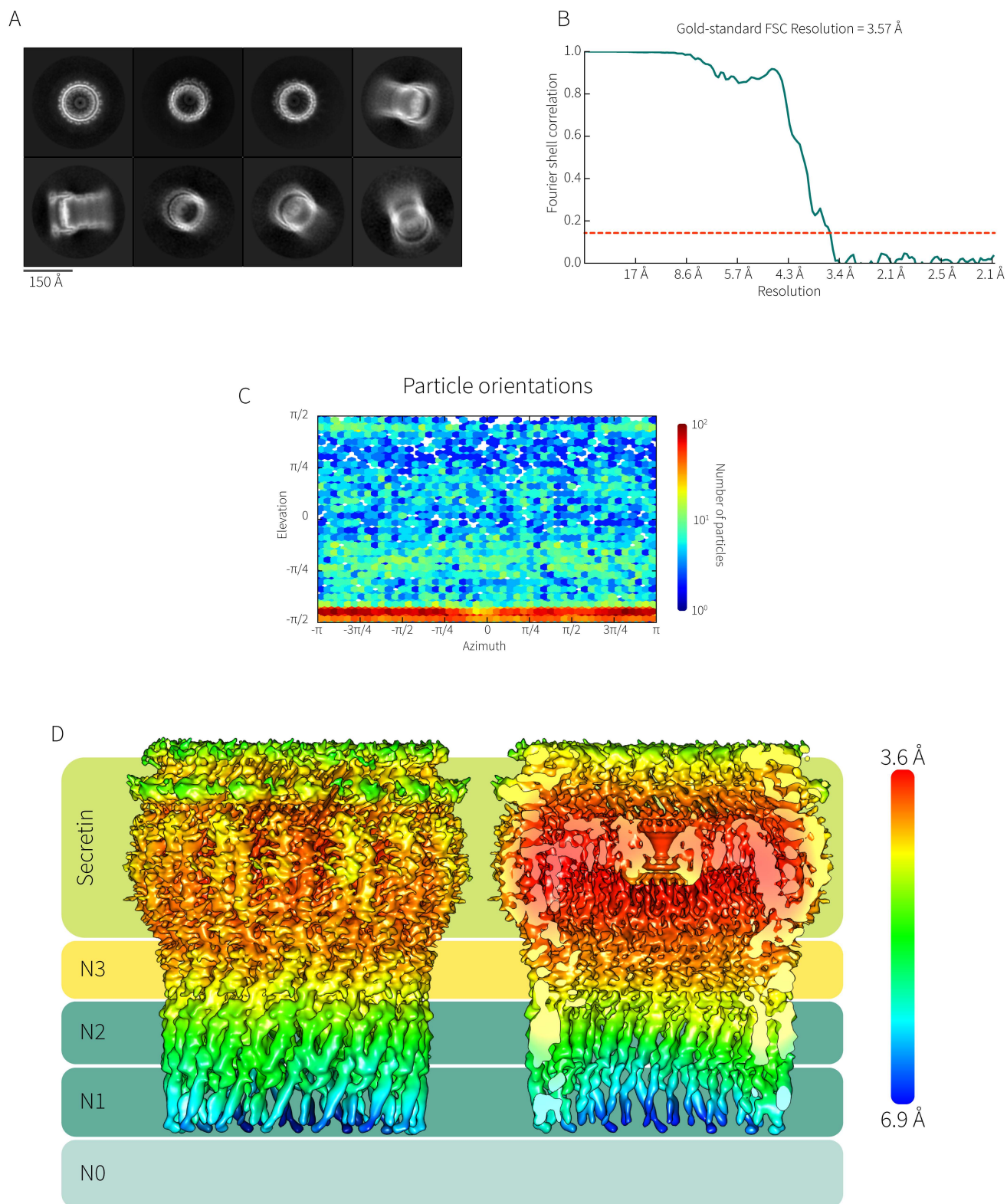


Supplementary Figure S2



Supplementary Figure S2. Cryo EM map parameters. (A) Representative 2D class averages of XcpQ particles. (B) Fourier shell correlation plot of the 3D map showing a gold standard resolution of 3.57 Å (FSC=0.143 criteria). (C) Plot showing the distribution of particle orientations over the azimuth and elevation angles of the final map (D) Local resolution of the XcpQ model showing deterioration of the resolution in the N terminal domains (calculated with Relion 2.1 Local resolution).