

Electronic Supplementary Material 3

Allele frequency calculation

Allele frequency of HLA-A, HLA-B, HLA-C, HLA-DRB1, HLA-DQA1 and HLA-DQB1 based on the EU, German and Bern sample (<http://www.allelefrequencies.net>).

Filters used:

EU population:

Populations: All Populations / Country: none specified / Source of Dataset: All Sources / Region: Europe / Ethnic Origin: Caucasoid

German population:

Populations: All Populations / Country: Germany / Source of Dataset: All Sources / Region: Europe / Ethnic Origin: Caucasoid

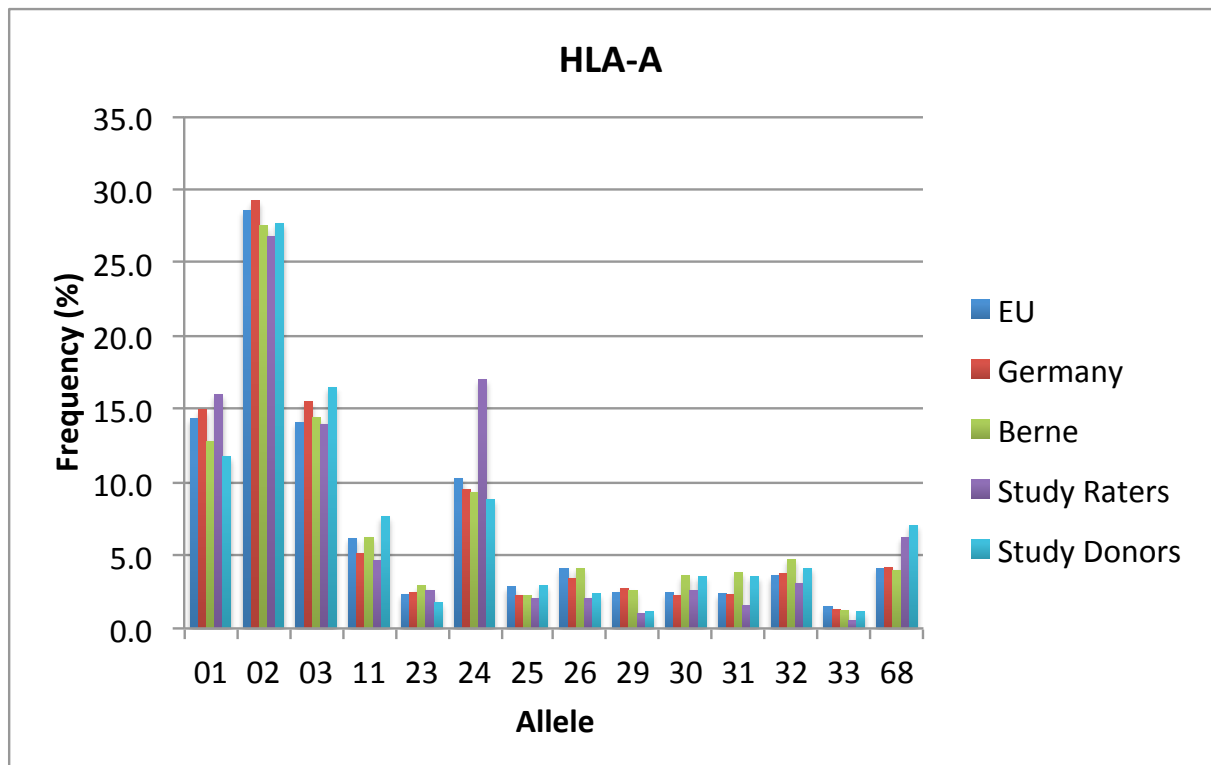
Berne population:

Populations: All Populations / Country: Switzerland / Source of Dataset: All Sources / Region: Europe / Ethnic Origin: none specified

Probst, Fischbacher, Lobmaier, Wirthmüller & Knoch: Men's preferences for women's body odours are not associated with HLA

Typed alleles and their frequencies within the European, German, and Berne population, and frequencies of alleles in the study raters and donors:

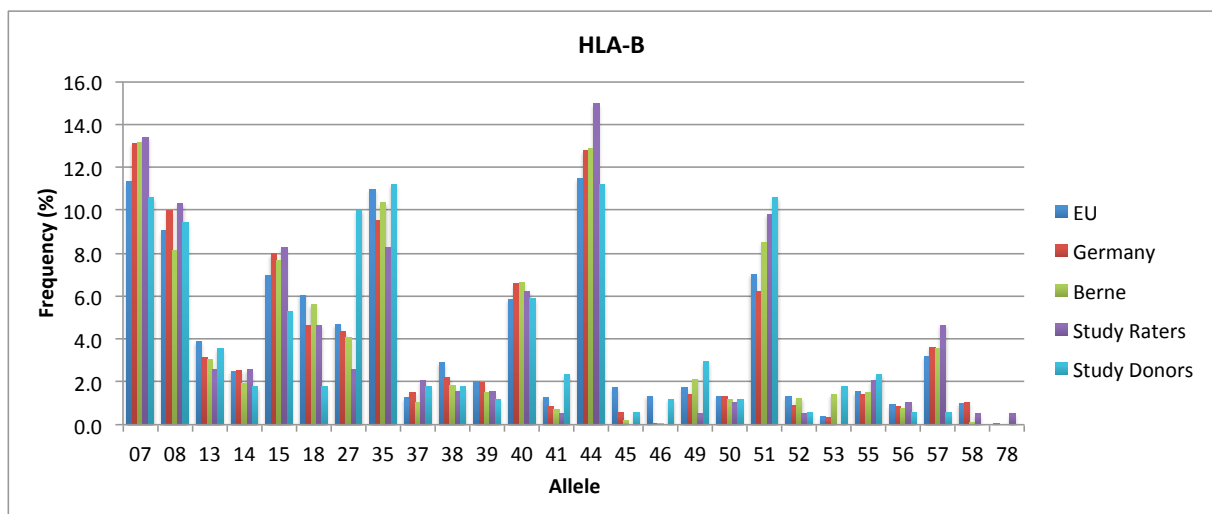
HLA-A					
Allele	EU population N=105'306	German population N=11'407	Bern population N=3'545	Study Raters N=97	Study donors N=85
01	14.3	15.0	12.8	16.0	11.8
02	28.5	29.2	27.5	26.8	27.6
03	14.1	15.5	14.4	13.9	16.5
11	6.1	5.1	6.2	4.6	7.6
23	2.3	2.4	2.9	2.6	1.8
24	10.2	9.5	9.3	17.0	8.8
25	2.8	2.3	2.2	2.1	2.9
26	4.1	3.4	4.1	2.1	2.4
29	2.4	2.7	2.6	1.0	1.2
30	2.4	2.3	3.6	2.6	3.5
31	2.4	2.3	3.8	1.5	3.5
32	3.6	3.8	4.7	3.1	4.1
33	1.5	1.3	1.3	0.5	1.2
68	4.1	4.1	4.0	6.2	7.1



Probst, Fischbacher, Lobmaier, Wirthmüller & Knoch: Men's preferences for women's body odours are not associated with HLA

HLA-B

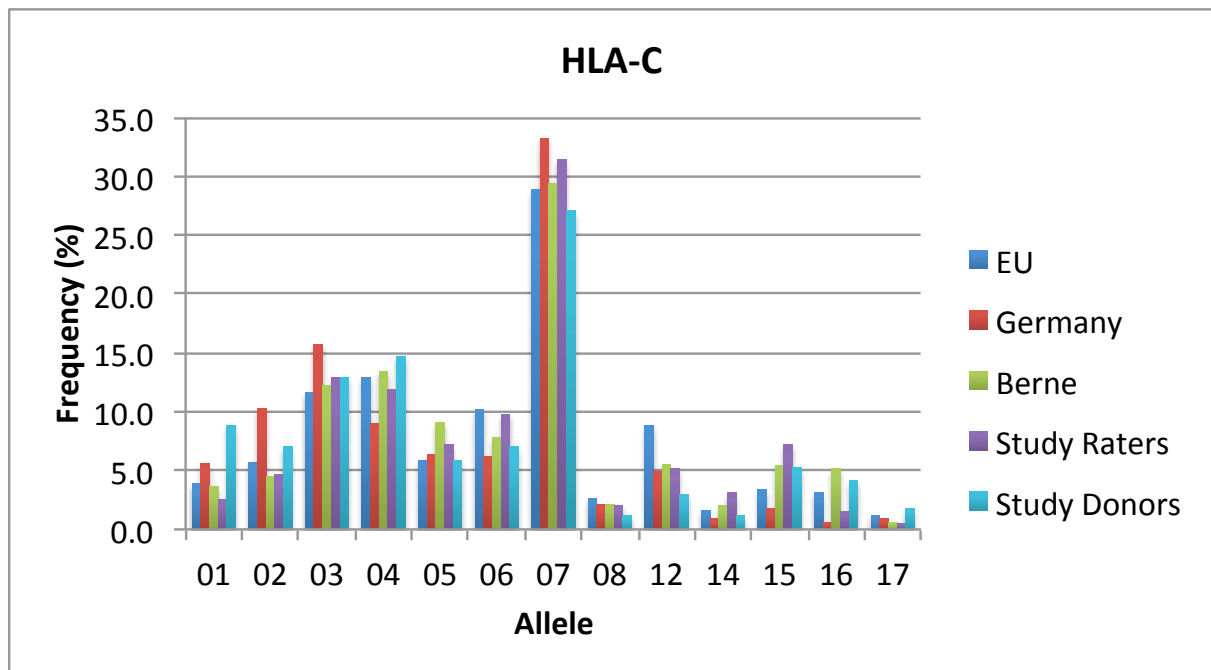
Allele	EU population N=108'441	German population N=11'407	Bern population N=3'545	Study Raters N=97	Study donors N=85
07	11.3	13.1	13.1	13.4	10.6
08	9.0	10.0	8.1	10.3	9.4
13	3.9	3.2	3.0	2.6	3.5
14	2.5	2.5	1.9	2.6	1.8
15	7.0	8.0	7.7	8.2	5.3
18	6.0	4.6	5.6	4.6	1.8
27	4.7	4.3	4.1	2.6	10.0
35	11.0	9.5	10.4	8.2	11.2
37	1.3	1.5	1.0	2.1	1.8
38	2.9	2.2	1.8	1.5	1.8
39	2.0	2.0	1.5	1.5	1.2
40	5.8	6.6	6.6	6.2	5.9
41	1.3	0.9	0.7	0.5	2.4
44	11.5	12.8	12.9	14.9	11.2
45	1.7	0.6	0.2	0.0	0.6
46	1.3	0.1	0.1	0.0	1.2
49	1.7	1.4	2.1	0.5	2.9
50	1.3	1.3	1.2	1.0	1.2
51	7.0	6.2	8.5	9.8	10.6
52	1.3	0.9	1.2	0.5	0.6
53	0.4	0.4	1.4	0.0	1.8
55	1.5	1.4	1.5	2.1	2.4
56	0.9	0.9	0.8	1.0	0.6
57	3.2	3.6	3.5	4.6	0.6
58	1.0	1.1	0.1	0.5	0.0
78	0.1	0.0	0.0	0.5	0.0



Probst, Fischbacher, Lobmaier, Wirthmüller & Knoch: Men's preferences for women's body odours are not associated with HLA

HLA-C

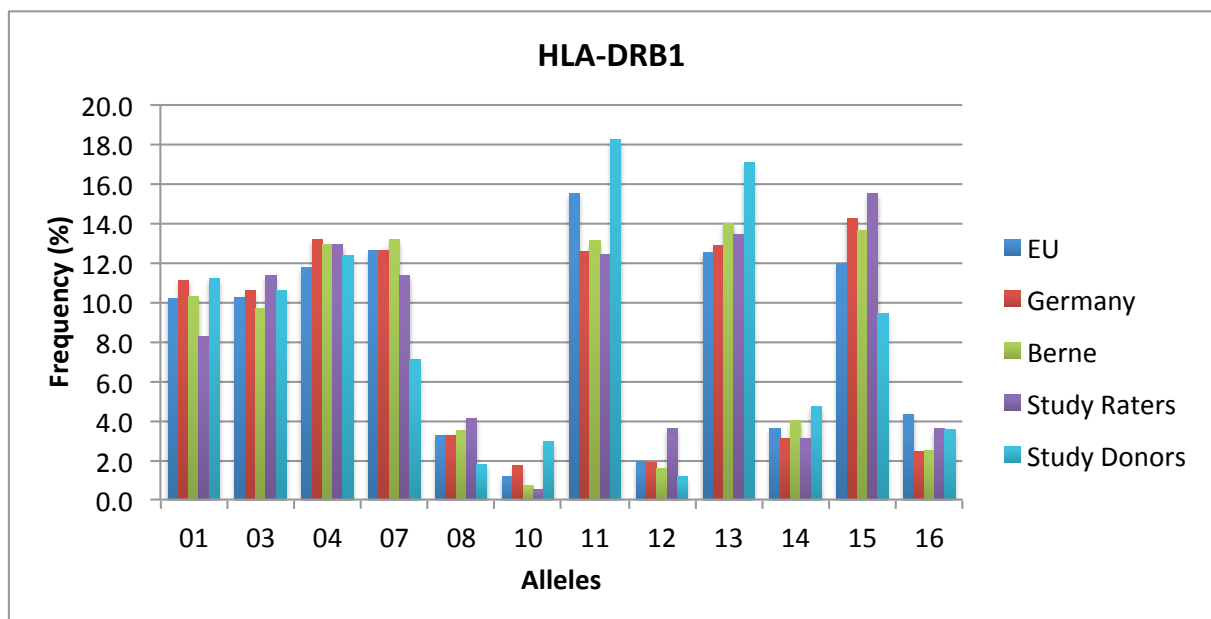
Allele	EU population N=106'276	German population N=174	Bern population N=3'545	Study Raters N=97	Study donors N=85
01	3.9	5.6	3.7	2.6	8.8
02	5.7	10.3	4.5	4.6	7.1
03	11.6	15.7	12.3	12.9	12.9
04	12.9	9	13.5	11.9	14.7
05	5.9	6.4	9.1	7.2	5.9
06	10.2	6.2	7.8	9.8	7.1
07	28.9	33.2	29.4	31.4	27.1
08	2.7	2.1	2.1	2.1	1.2
12	8.8	4.9	5.5	5.2	2.9
14	1.6	0.9	2.0	3.1	1.2
15	3.4	1.8	5.4	7.2	5.3
16	3.1	0.6	5.2	1.5	4.1
17	1.2	0.9	0.6	0.5	1.8



Probst, Fischbacher, Lobmaier, Wirthmüller & Knoch: Men's preferences for women's body odours are not associated with HLA

HLA-DRB1

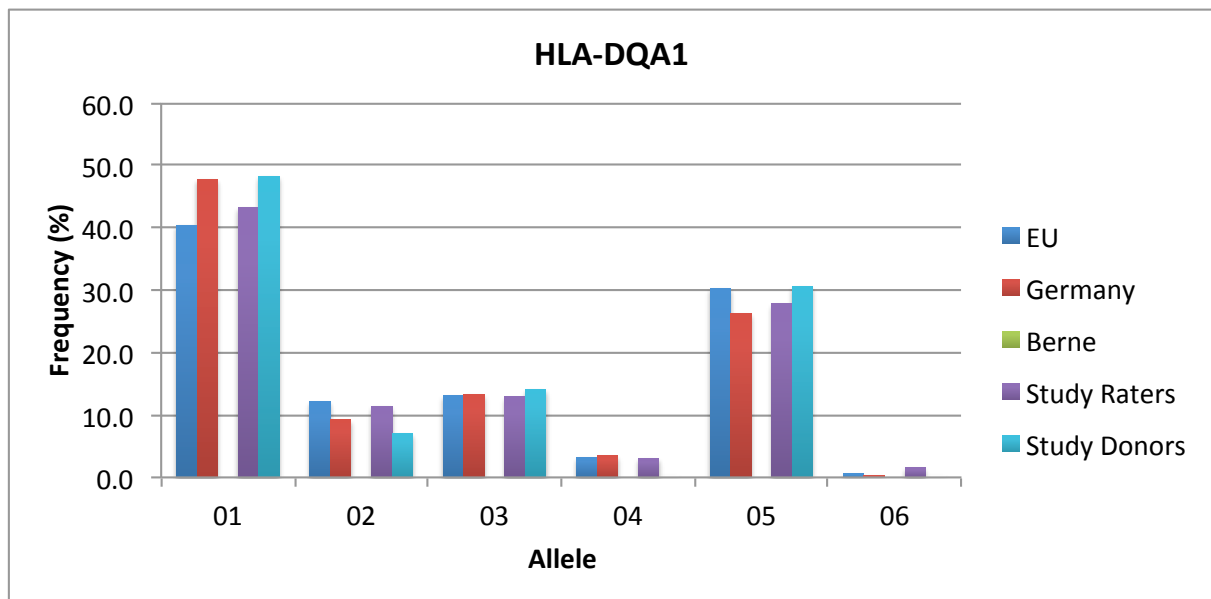
Allele	EU population N=124'603	German population N=11'407	Bern population N=3'545	Study Raters N=97	Study donors N=85
01	10.2	11.1	10.3	8.2	11.2
03	10.2	10.6	9.7	11.3	10.6
04	11.7	13.2	12.9	12.9	12.4
07	12.6	12.6	13.2	11.3	7.1
08	3.2	3.3	3.5	4.1	1.8
10	1.2	1.7	0.7	0.5	2.9
11	15.5	12.5	13.1	12.4	18.2
12	1.9	1.9	1.6	3.6	1.2
13	12.5	12.9	14.0	13.4	17.1
14	3.6	3.1	4.0	3.1	4.7
15	11.9	14.2	13.6	15.5	9.4
16	4.3	2.4	2.5	3.6	3.5



Probst, Fischbacher, Lobmaier, Wirthmüller & Knoch: Men's preferences for women's body odours are not associated with HLA

HLA-DQA1

Allele	EU population N=4'749	German population N=174	Bern population N= n/a	Study Raters N=97	Study donors N=85
01	40.4	47.7		43.3	48.2
02	12.1	9.2		11.3	7.1
03	13.1	13.3		12.9	14.1
04	3.2	3.5		3.1	0.0
05	30.3	26.2		27.8	30.6
06	0.5	0.3		1.5	0.0



Probst, Fischbacher, Lobmaier, Wirthmüller & Knoch: Men's preferences for women's body odours are not associated with HLA

HLA-DQB1

Allele	EU population N=24'598	German population N=174	Bern population N= 3'545	Study Raters N=97	Study donors N=85
02	21.3	19.3	19.0	18.6	16.5
03	35.9	29.4	36.4	35.1	35.3
04	2.8	2.9	3.6	3.1	0.0
05	19.6	19.0	15.8	14.4	23.5
06	20.0	29.7	25.8	28.9	24.7

