

Supplementary Information for Association between Parkinson's disease and risk of prostate cancer in different populations: An updated meta-analysis

Title of manuscript:

Association between Parkinson's disease and risk of prostate cancer in different populations: An updated meta-analysis

Chunli Chen, MD, Haiping Zheng, MD, Zhiping Hu, MD.

Department of Neurology, Second Xiangya Hospital, Hunan, P.R. China

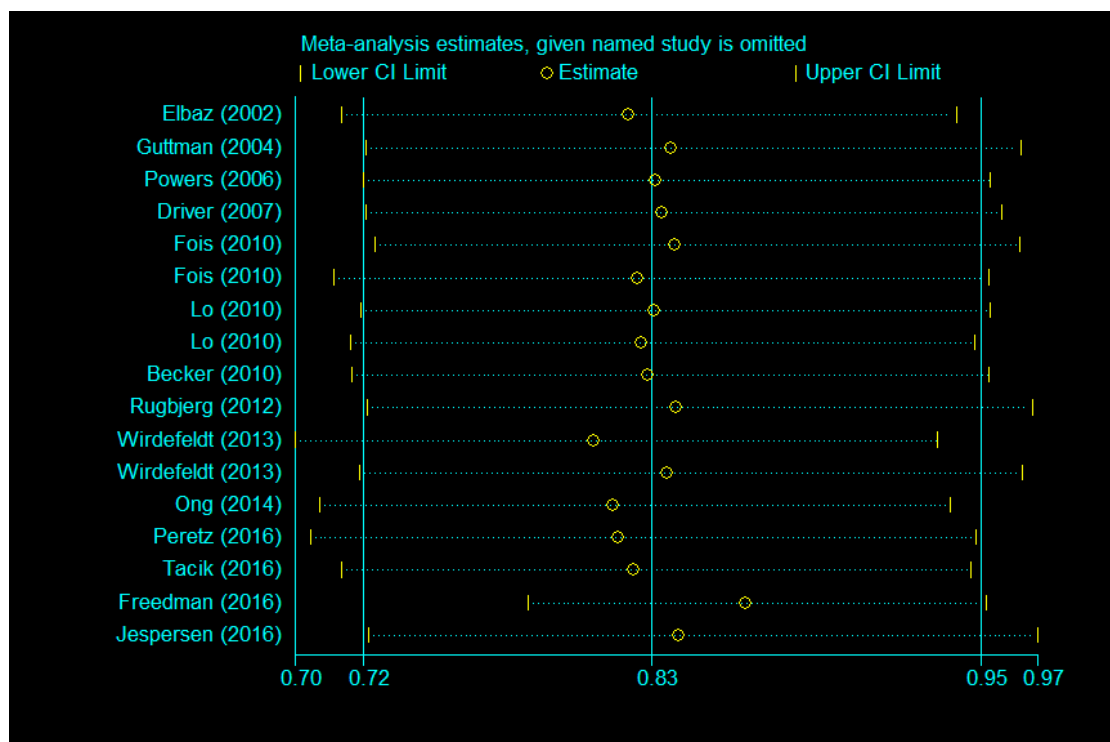


Figure S1: Sensitivity analysis for the association between Parkinson's disease and risk of prostate cancer in Western population.

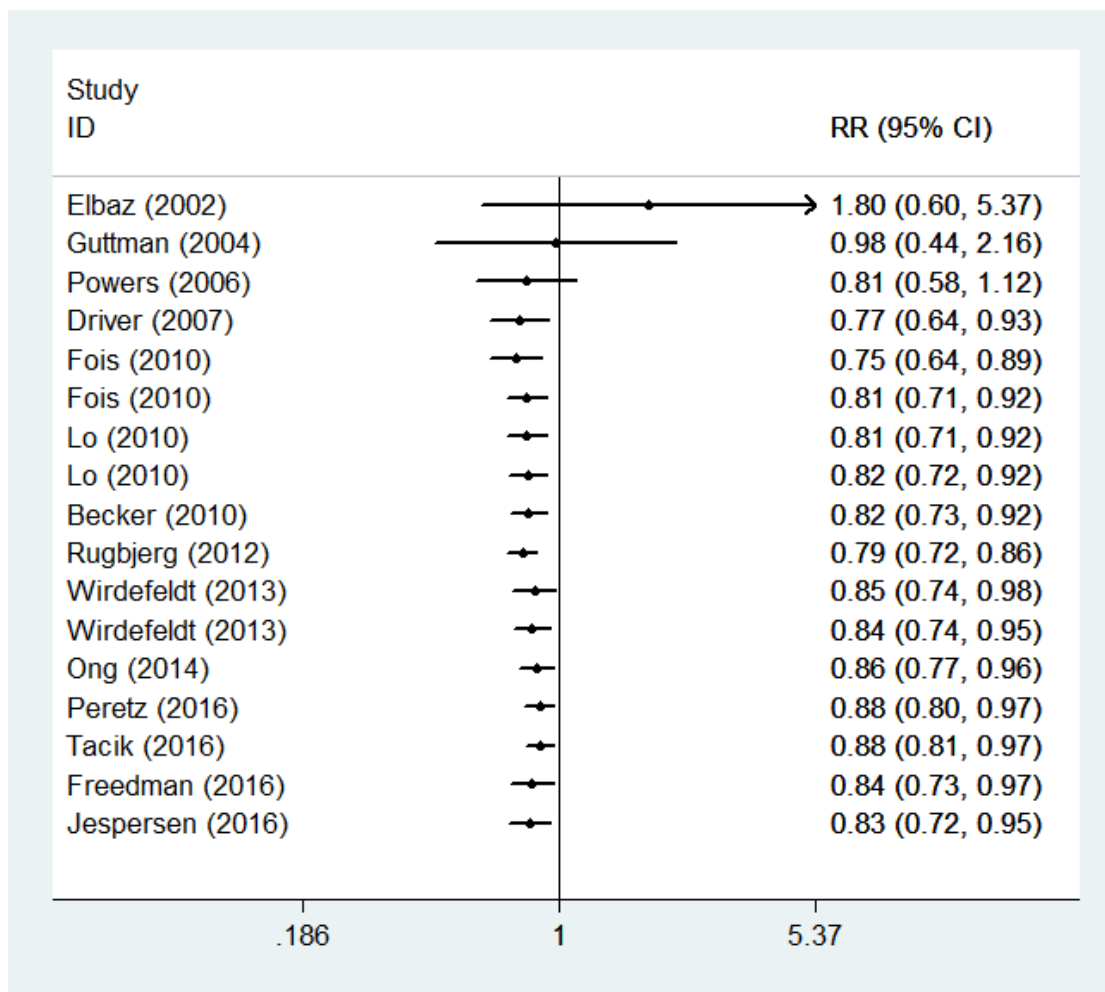


Figure S2: Cumulative meta-analysis of the association between Parkinson's disease and risk of prostate cancer in Western population.

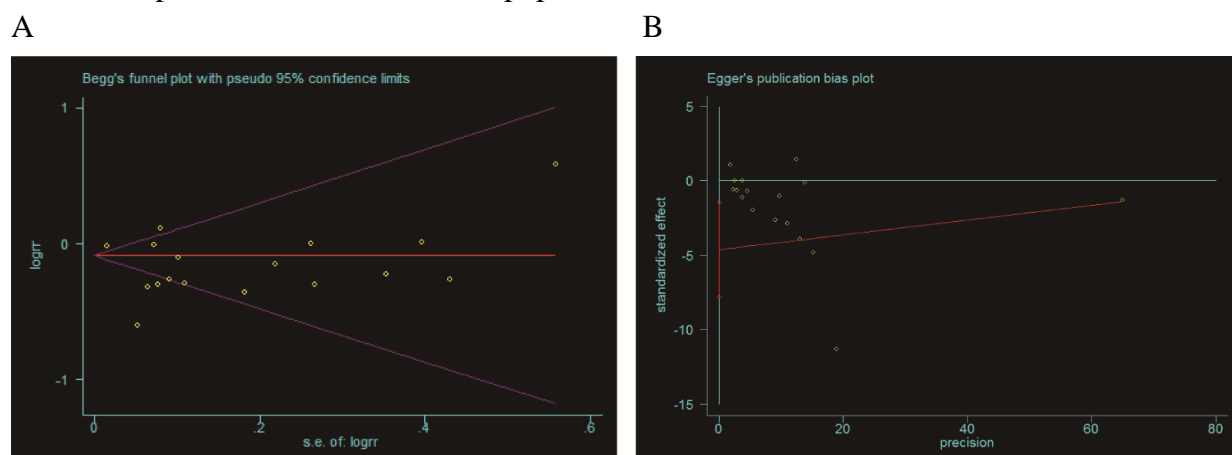


Figure S3: Test result for publication bias. (A) Begg's test; (B) Egger's test.

Study/ year	Selection		Selection of controls	Definiti on of controls	Control for important factors*	Exposure			NOS Score
	Adequate definition of cases	Representa tiveness of cases				Ascertainment of exposure	Same method to ascertain for cases and controls	Nonresponse rate	
Elbaz 2002	1	1	1	1	1	1	1	0	7
Guttman 2004	1	0	1	1	1	1	1	0	6
Powers 2006	1	1	0	1	1	1	1	0	6
Driver 2007	1	1	1	1	1	0	1	0	6
Fois 2010	1	0	1	1	2	1	1	0	7
Lo 2010	1	1	1	1	2	1	0	0	7
Becker 2010	1	1	1	1	1	0	1	0	6
Rugbjerg2 012	1	0	1	1	1	1	1	1	7
Wirdefeldt 2013	1	1	1	1	1	1	1	0	7
Ong 2014	1	1	1	1	1	1	1	1	8
Lin 2015	1	1	1	1	1	1	1	0	7
Peretz 2016	1	1	1	0	1	1	1	1	7
Tacik 2016	1	1	1	0	0	1	1	0	5
Freedman 2016	1	1	0	0	1	1	1	0	5
Jespersen 2016	1	1	1	1	1	1	1	0	7

Table S1. The quality of the included studies assessed by NOS.*: a maximum of two stars can be allotted in this category, one for age, sex, the other for other important controlled factors.