

Supplementary Information:

Evidence for long-term sensitization of the bowel in patients with post-infectious-IBS

Balemans D^{1&}, Mondelaers SU^{1&}, Cibert-Goton V^{2&}, Stakenborg N¹, Aguilera-Lizarraga J¹, Dooley J³, Liston A³, Bulmer DC^{2,4}, Vanden Berghe P¹, Boeckxstaens GE^{1§*}, Wouters MM^{1§}

& §: authors contributed equally

1 Translational Research Center for Gastrointestinal Disorders, Dept. of Clinical and Experimental Medicine, KU Leuven, Leuven, Belgium

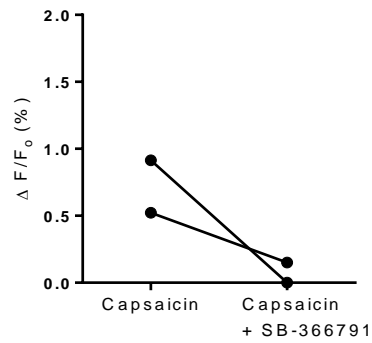
2 National Centre for Bowel Research and Surgical Innovation, Centre for Neuroscience and Trauma, Blizard Institute, Bart's and the London school of Medicine and Dentistry, Queen Mary University of London, London, UK

3 Autoimmune Genetics Laboratory, VIB and Department of Microbiology and Immunology, KU Leuven, Belgium

4 Department of Pharmacology, University of Cambridge, Cambridge, UK

Supplementary figures and legends

Supplementary Figure 1

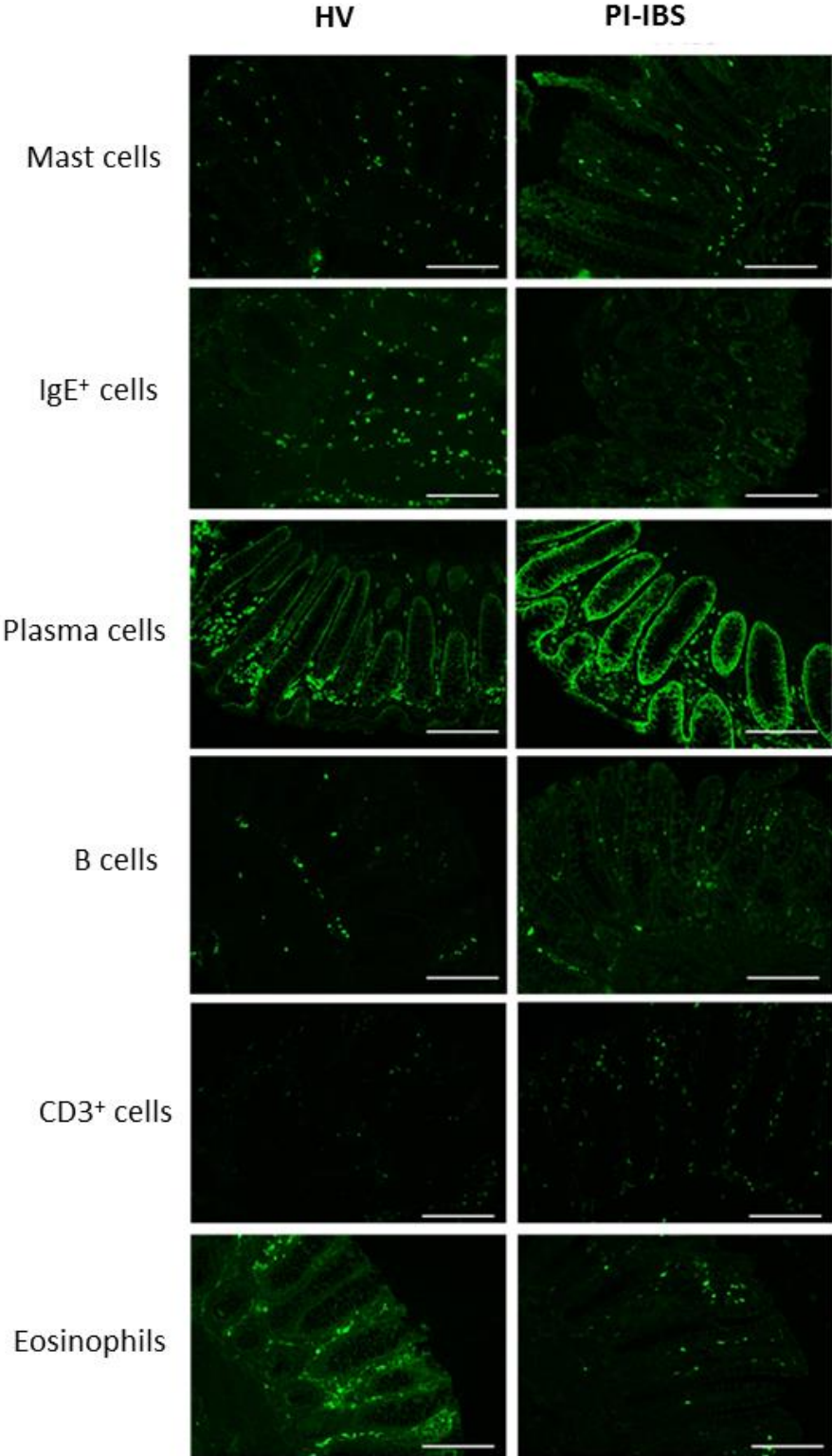


Supplementary Figure 1: Capsaicin-induced response in IBS patients is blocked by TRPV1 antagonist

SB-366791. Data showing the amplitude of the Ca^{2+} flux (%) to 0.1 nM capsaicin in IBS patients (n=2)

before and after incubation with TRPV1 antagonist SB-366791.

Supplementary Figure 2



Supplementary Figure 2: No evidence for low-grade inflammation in rectal biopsies of PI-IBS patients. Immunohistochemical staining of mast cells, IgE⁺ cells, plasma cells, B cells, CD3⁺ T cells and

eosinophils in HV (n=9) and PI-IBS (n=8) rectal biopsies (as indicated). HV = healthy volunteer, PI-IBS = post-infectious IBS. Scalebar=200 μ m.

Supplementary Tables

Supplementary Table 1: Primer sequences for gene detection by RT-qPCR.

Gene	Protein	Forward (5' -> 3')	Reverse (3' -> 5')	Probe
Actb	β -actin	ACTCCATCATGAAGTGTGA	GGCAGTGATCTCCTTCTG	TGTACGCCAACACAGTGCT G
IL1 beta	IL-1 β	AGCTACGAATCTCCGACCAC	CGTTATCCCATGTGTCTGAAGAA	-
IL2	IL-2	TAACTCAACTCCTGCCACAA	GAGCATCCTGGTGAGTTTGG	-
IL4	IL-4	ACTGCACAGCAGTTCCACAG	ACTCTGGTTGGCTTCCTTAC	-
IL5	IL-5	TCTACTCATCGAACTCTGCTGA	CCCTTGACAGTTTGACTCTC	-
IL6	IL-6	TCTGGATTCAATGAGGAG	CTGGATCAGGACTTTTGTA	CTGGCTTGTTCTCACTACT CTCA
IL10	IL-10	AAGCCATGAGTGAGTTTG	GTCCTAGAGTCTATAGAGTCG	CGTATCTTCATTGTCATGTA GGCTTCT
IL13	IL-13	AGCCCTCAGGGAGCTCAT	CTCCATACCATGCTGCCATT	-
IL17f	IL-17f	CCTACTGCGCCTGTACAAC	ATGAAGCTTGACATTGGCATC	-
IFN γ	IFN- γ	ACGAGATGACTTCGAAAA	TTCGCTCCCTGTTTTAG	CGGTAAGTACTGACTTGAATGT CCAACG
TNF	TNF- α	GACGAACATCCAACCTTC	GGTGGTCTTGTTGCTTAA	CCCCTGCCCAATCCCTTTA
<i>Ccl2</i>	MCP-1	CCCCAGTCACCTGCTGTTAT	TCCTGAACCCACTTCTGCTT	ATTGTGGCCAAGGAGATCT G
<i>TRPV1</i>	TRPV1	CCCCGATAGCTCCTACAACA	GCAGCAGGATGATGAAGACA	-

sTable 1 summarizing the gene, the protein and corresponding primer sequences.