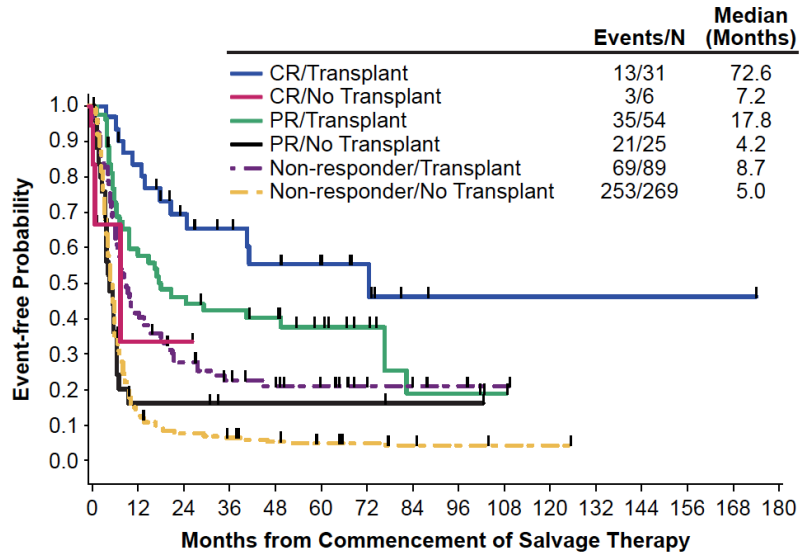
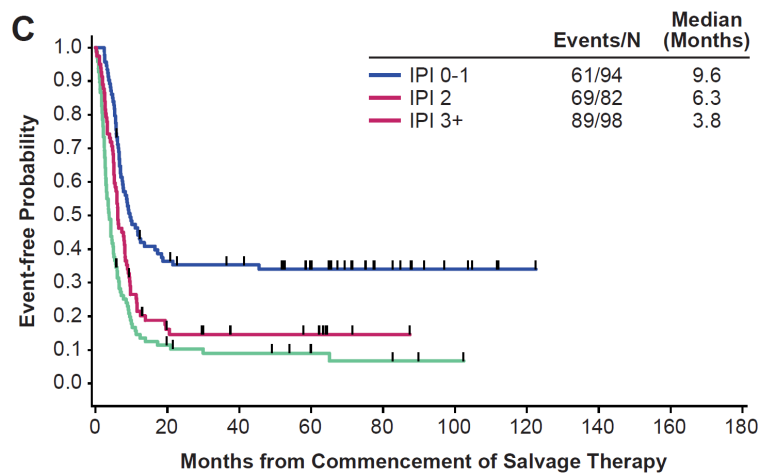
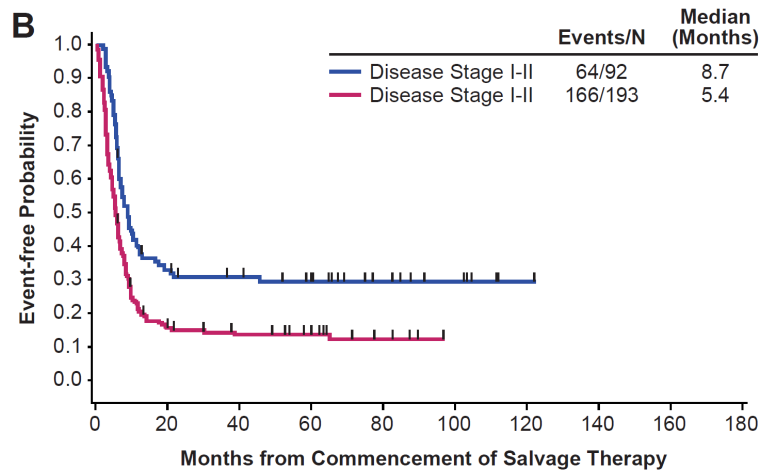
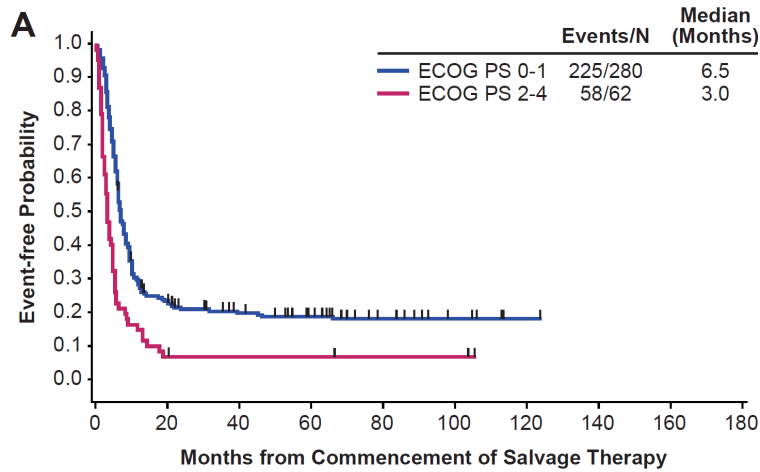


SUPPLEMENTAL MATERIALS

Supplemental Figure 1. Overall survival from commencement of salvage therapy by tumor response and transplantation status (Kaplan-Meier). CR, complete response; PR, partial response.



Supplemental Figure 2. Overall survival from commencement of salvage therapy by A) ECOG performance status B) disease stage, and C) IPI risk classification. IPI, International Prognostic Index.



Supplemental Table 1

	Overall Cohort, N	Enrollment Years	Point of Ascertainment	Prescribed Assessments After Refractory?	Central Radiology Review of Response?
LY.12 (CCTG)	619	2003-2011	First relapse/refractory	Yes (clinical)	No
CORAL (LYSARC)	477	2003-2008	First relapse/refractory	Yes Amendment was made	No Only investigator assessment
MDACC	886	2001-2014	First relapse	No	No
IA/MC	1039	2002-2012	Newly diagnosed	No	No

CCTG, Canadian Cancer Trials Group; CORAL, Collaborative Trial in Relapsed Aggressive Lymphoma; IA/MC, University of Iowa Mayo Clinic Lymphoma Specialized Program of Research Excellence; LYSARC, Lymphoma Academic Research Organization; MDACC, MD Anderson Cancer Center.