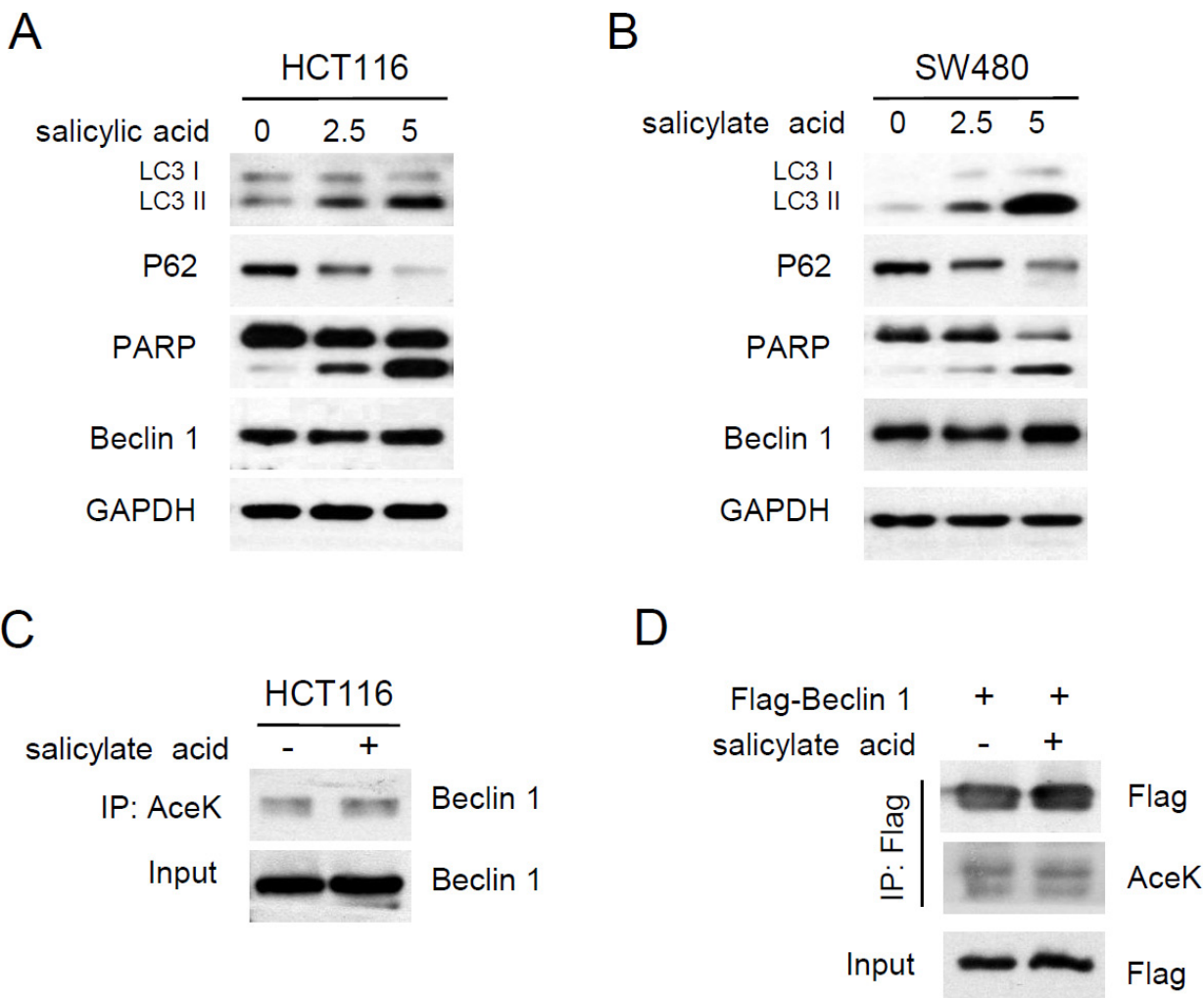


Beclin 1 acetylation impairs the anticancer effect of aspirin in colorectal cancer cells

SUPPLEMENTARY MATERIALS



Supplementary Figure 1: Sodium salicylate induced autophagy but not Beclin 1 acetylation in CRC cells. (A-B) HCT116 and SW480 cells were treated with different concentration of sodium salicylate for 24 h. Protein levels were estimated using western blot analysis. GAPDH was used as loading control. (C) Acetylated proteins were immunoprecipitated with the antibody to acetylated lysine from HCT116 cells after 5mM sodium salicylate treatment for 24 h. Acetylation of endogenous Beclin 1 protein was analysed with western bolt. (D) Flag-tagged Beclin 1 was transfected into HCT116 cells. Then the transfected cells were treated with 5mM aspirin for 24 h or not. Acetylation of exogenous Beclin 1 protein was analysed with IP and western bolt.