

Legends to online repository figures

E1. A: Effect of Dex and cytokines on live and dead cells as demonstrated by forward scatter (FS) and side scatter (SS). **B:** The live cells were then further analyzed for dead cells using the fluorescent vital dye e-Fluor 780 (FVD e-Fluor 780, e-Bioscience, Inc). The boxed area in the flow cytogram shows the number of dead cells.

E2. A: Mean fluorescence intensity (MFI) of intracellular IL5 staining of BAL ILC2s cultured with vehicle (V) or Dex. BAL cells were obtained from allergic asthmatic patients. Each symbol represents a single donor. **B&C:** Cell viability of BAL cells upon culture with vehicle (V) or Dex. Dead cells were analyzed by two different dead cell dyes—e-Fluor 780 (B) and Zombie aqua (Biolegend, Inc.) (C). Flow cytograms are representatives of 3 separate experiments.

E3. Effect of Dex on CRTH2⁺ and IL5⁺ ILC2s from healthy subjects. PBMCs were cultured with IL2/IL33 or IL2/TSLP with and without Dex for 5 days. **A:** Gated lin⁻ cells were analyzed for CRTH2/IL7R α . **B:** Gated lin⁻CRTH2⁺ cells were analyzed for IL5/IL13. **C:** Cumulative data on the effect of Dex on IL5⁺ILC2s obtained from 6 healthy controls.

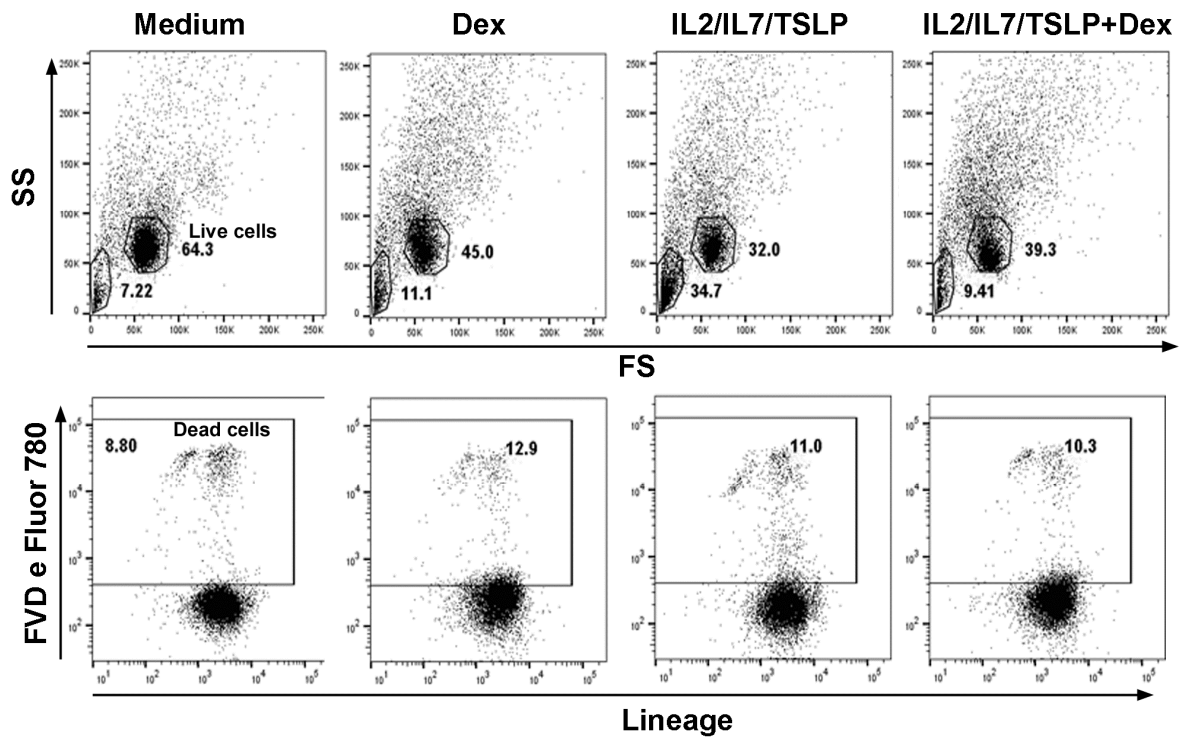
E4. Effect of Dex with and without IL7/TSLP on expression of the receptors for IL2 (CD25), IL33 (ST2) and IL25. PBMCs were cultured with Dex with and without IL7 or TSLP or medium alone for 5 days. The expression of CD25, ST2 and IL25 receptor on gated live lin⁻CRTH2⁺ cells was analyzed by FCM. Representative flow cytograms from one three similar experiments are shown.

E5: Effect of Dex on expression of c-Fos by blood ILCs, and of pSTAT3 and ID3 by BAL ILCs. PBMCs or BAL cells from allergic asthmatic patients were cultured with vehicle (V) or Dex for

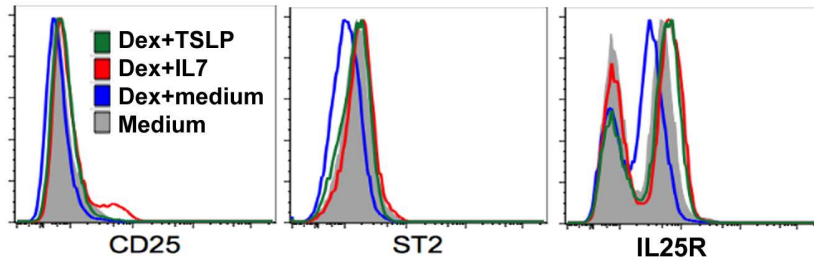
3 days and analyzed by flow cytometry. Representative flow cytograms for c-Fos in blood lin- cells (A), and pSTAT3 (B) and ID3 (C) in BAL lin- cells are shown.

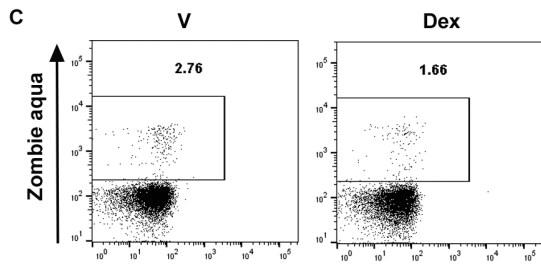
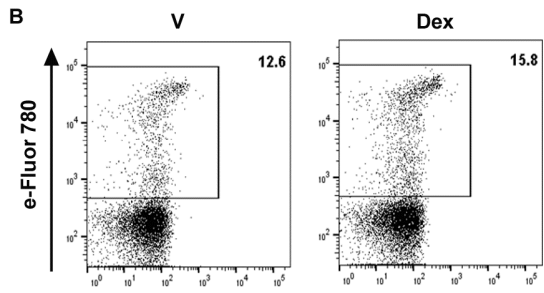
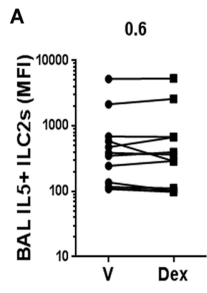
E6: Comparison of MEK expression by blood and BAL ILCs. A& B: Lin- cells from BAL and PBMC obtained from an asthmatic patient were stained and analyzed *ex vivo* for MEK expression. Representative flow cytograms are shown in panel A. Panel B shows cumulative data on MEK expression in lin- cells from 4 asthmatic patients. C: PBMCs from the patient shown in panel A were cultured in medium alone or with IL2/TSLP for 5 days. Lin- cells were gated and analyzed for MEK expression.

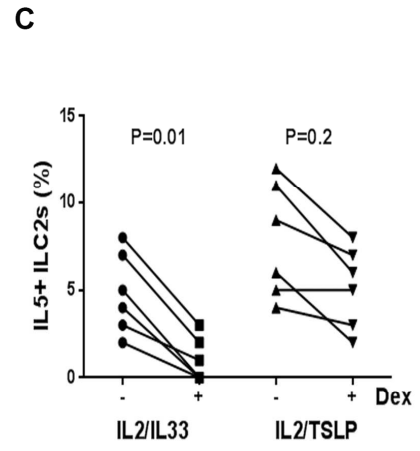
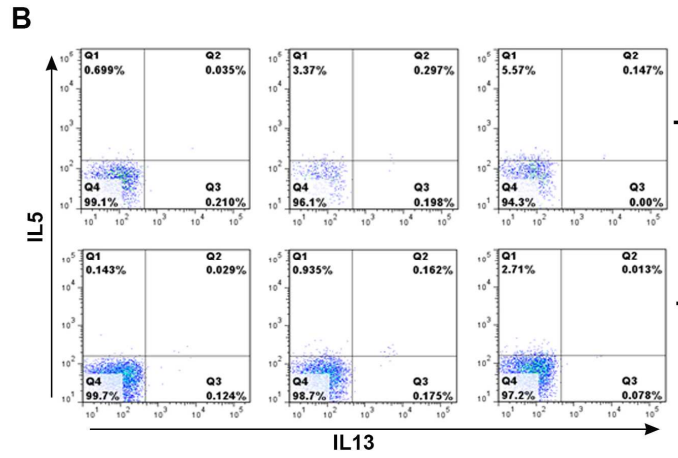
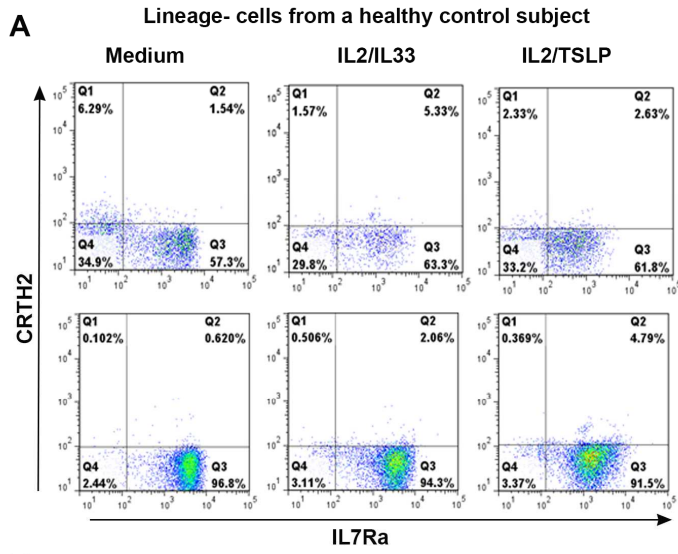
Online repository figure E1

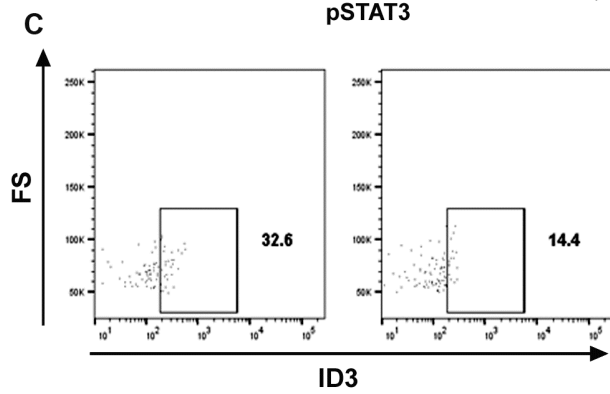
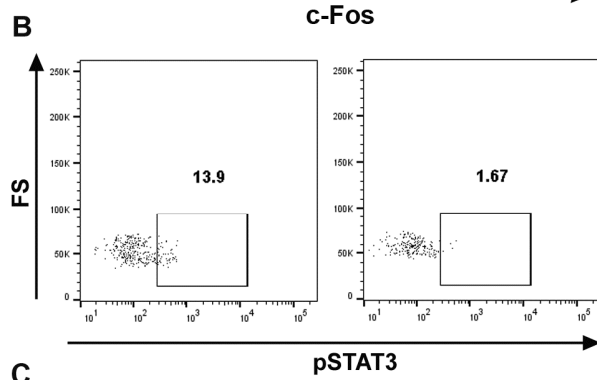
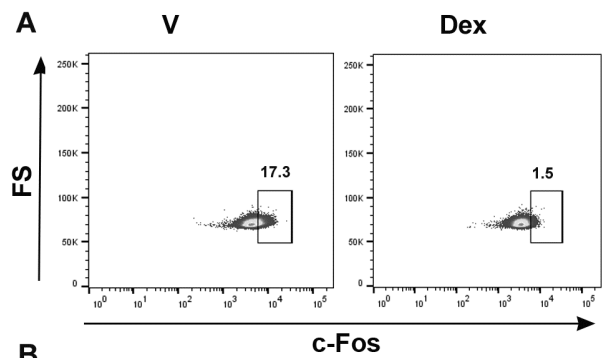


Online repository figure E2



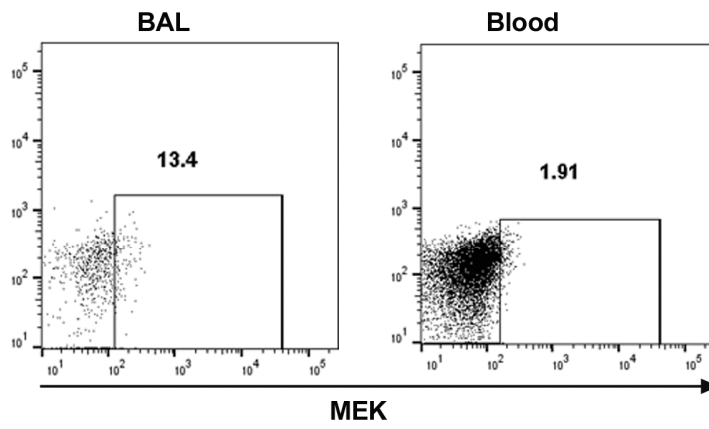
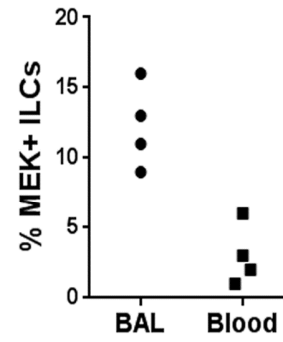






A

Ex vivo Lin- cells

**B****C**

In vitro blood lin- cells cultured with

