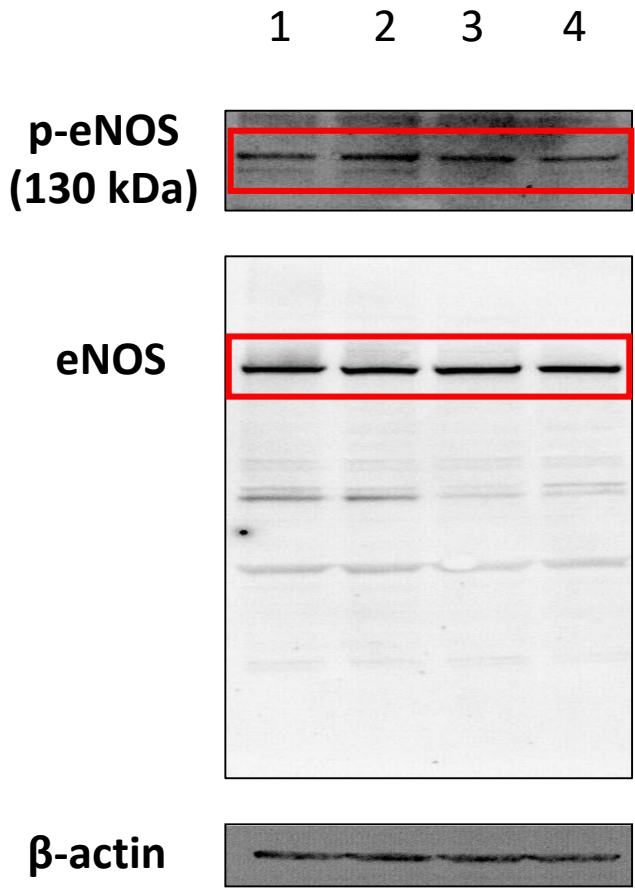


Non-muscular myosin light chain kinase triggers intermittent hypoxia-induced interleukin-6 release, endothelial dysfunction and permeability

Sylvain Recoquillon, Manuel Gómez-Guzmán, Marion Rodier, Camille Koffi, Mathieu Nitiéma, Frédéric Gagnadoux, M. Carmen Martínez, Ramaroson Andriantsitohaina

p-eNOS (6 hours) in figure 2

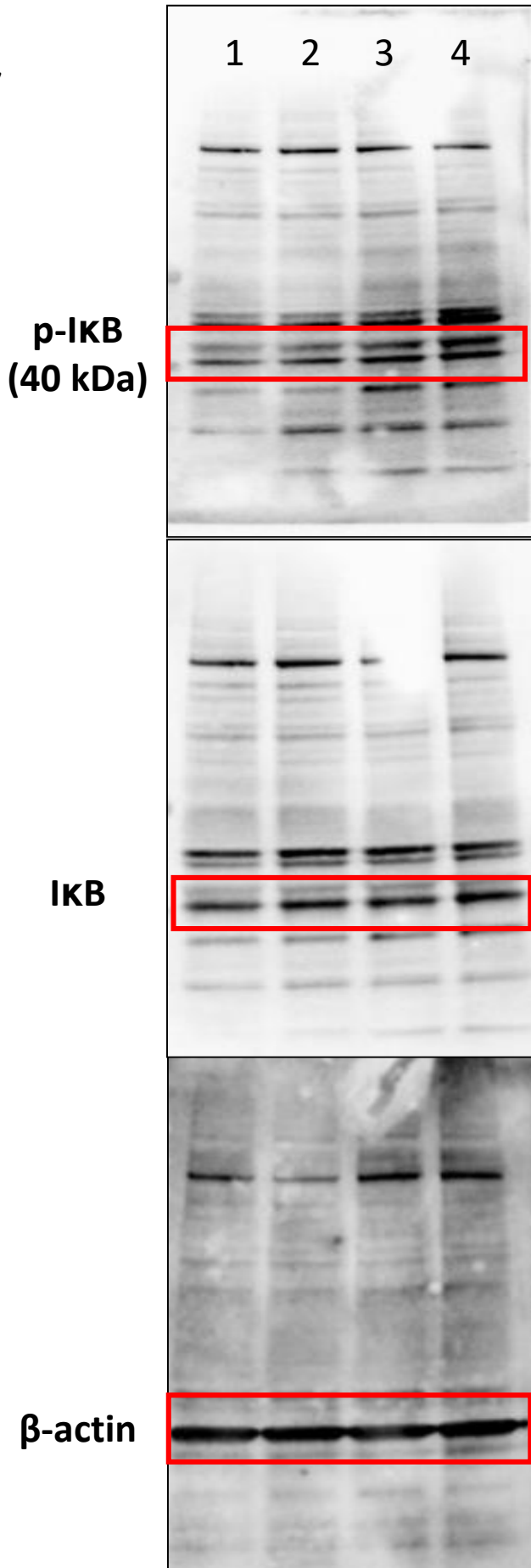
- 1 = Ctl
- 2 = ML-7
- 3 = IH
- 4 = IH + ML-7



Supplementary Figure 1. Unprocessed images of the key immunoblots of Figure 2. Boxes indicate image areas shown in the indicated panels.

I κ B (6 hours) in figure 3

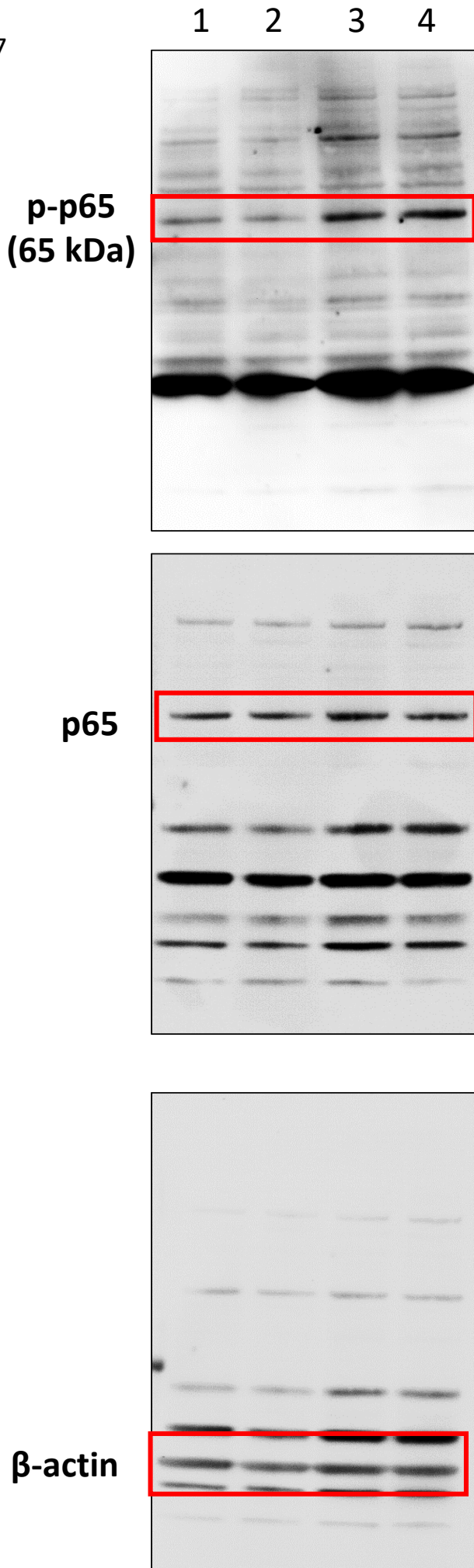
- 1 = Ctl
- 2 = ML-7
- 3 = IH
- 4 = IH + ML-7



Supplementary Figure 2. Unprocessed images of the key immunoblots of Figure 3. Boxes indicate image areas shown in the indicated panels.

p65 (6 hours) in figure 3

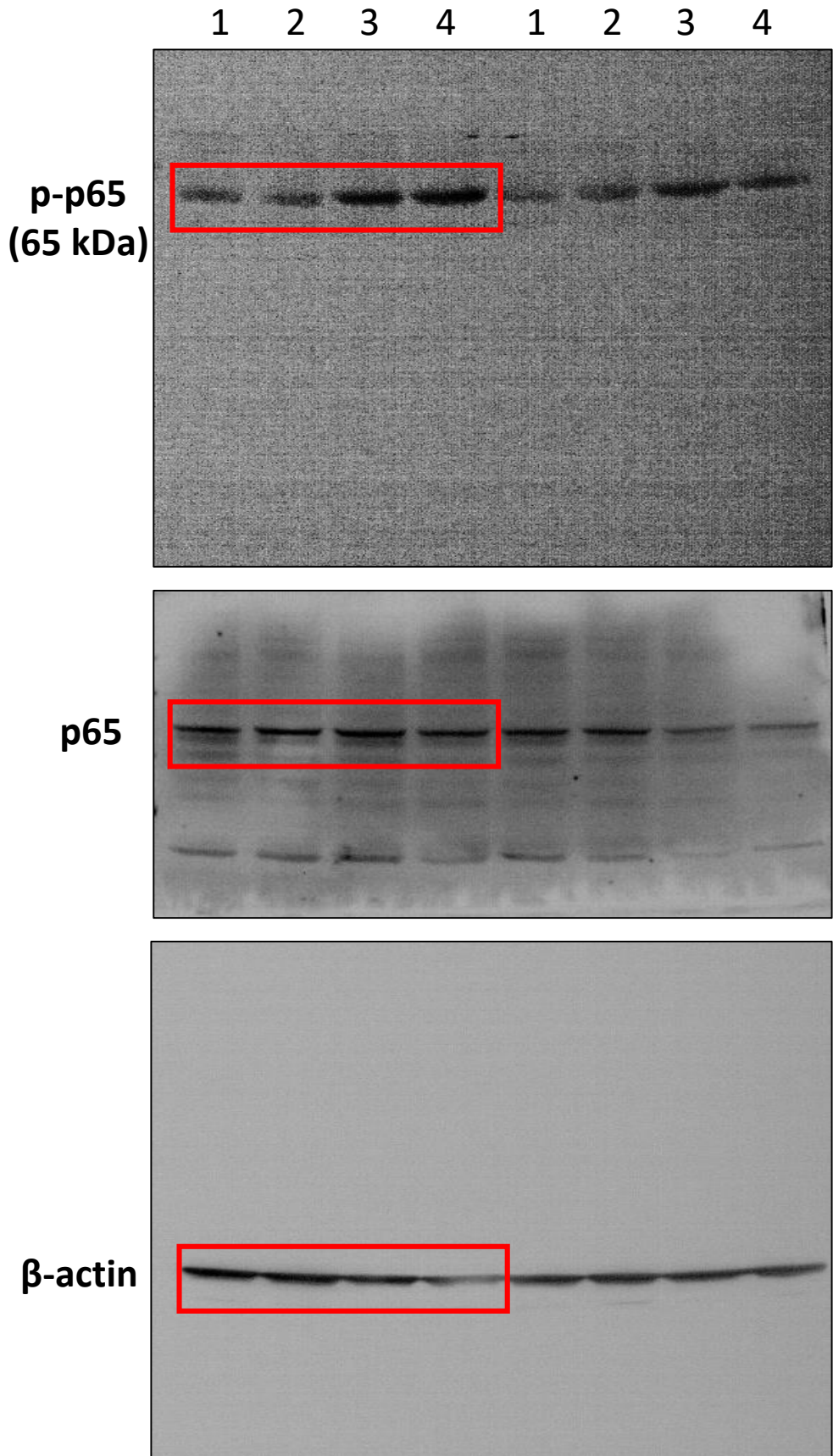
- 1 = Ctl
- 2 = ML-7
- 3 = IH
- 4 = IH + ML-7



Supplementary Figure 3. Unprocessed images of the key immunoblots of Figure 3. Boxes indicate image areas shown in the indicated panels.

p-p65 (6 hours) in figure 4

- 1 = Ctl
- 2 = BFA
- 3 = IH
- 4 = IH + BFA



Supplementary Figure 4. Unprocessed images of the key immunoblots of Figure 4. Boxes indicate image areas shown in the indicated panels.