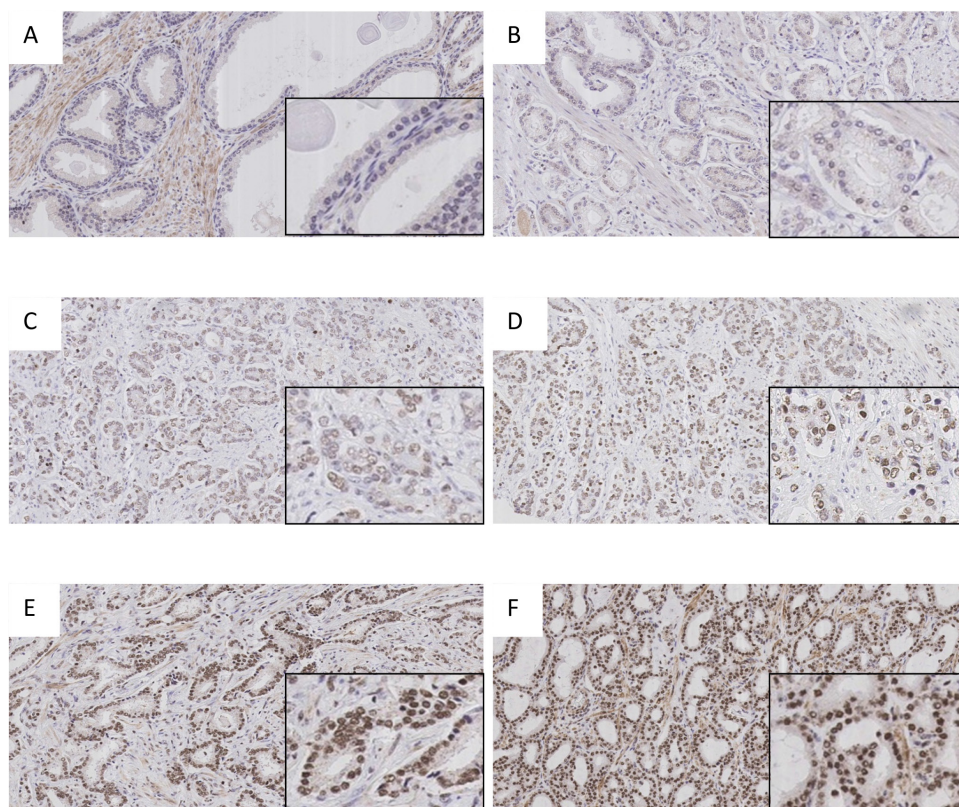
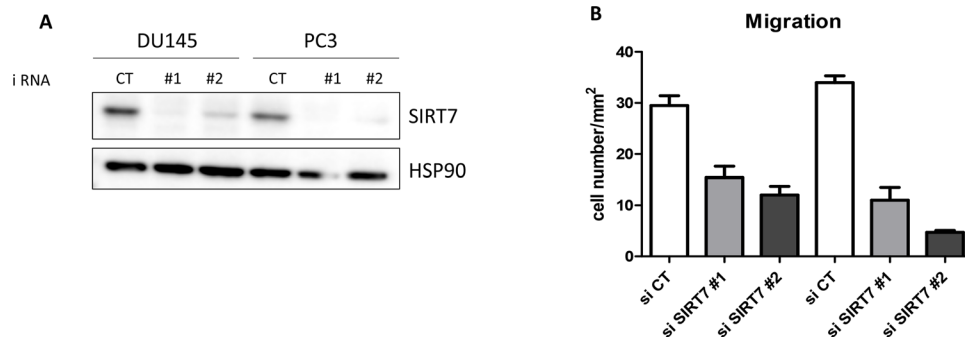


Sirtuin 7: a new marker of aggressiveness in prostate cancer

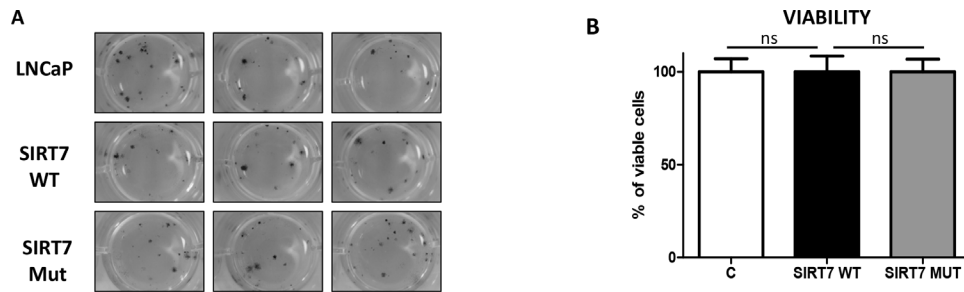
SUPPLEMENTARY MATERIALS



Supplementary Figure 1: Sirtuin 7 immunohistochemical staining on different human prostate tissues. (A) healthy negative; **(B)** tumoral negative; **(C)** tumoral weak; **(D)** tumoral moderate, **(E, F)** tumoral strong. (magnification x200, insert x400).



Supplementary Figure 2: The knockdown of SIRT7 by two different siRNA inhibits DU145 and PC3 migration (A) Western blotting of SIRT7 in DU145 and PC3 cells transfected with two siRNA targeting different regions of SIRT7. (B) The graph represents the migration of the indicated cancer cells as described in the materials and methods.



Supplementary Figure 3: SIRT7 overexpression does not affect clonogenic growth and viability. (A) Representative pictures of a clonogenic assay with LNCaP cells, cells expressing SIRT7wt and SIRT7mut. (B) Cell viability of control cells, cells expressing SIRT7wt and SIRT7mut. The data represents three independent experiments with sem.