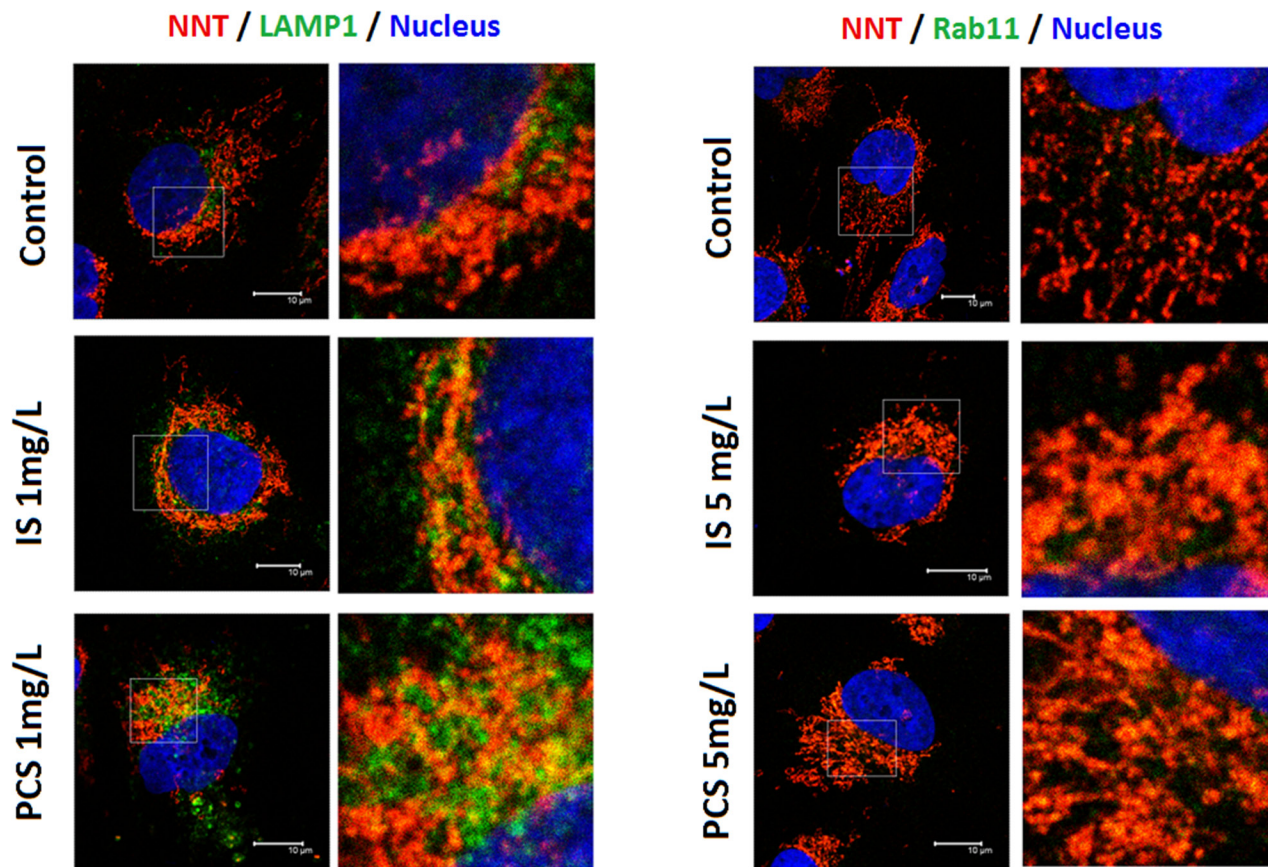


## Protein-bound uremic toxins impaired mitochondrial dynamics and functions

### SUPPLEMENTARY MATERIALS



**Supplementary Figure 1: Indoxyl sulfate and *p*-cresol sulfate increased mitochondrial localization of LAMP1 and Rab11 *in vitro*.** Cultured human renal tubular cells (HK2) treated with IS or PCS under the serum-free condition for 24 were analyzed. Control cells were cultured under the serum-free condition only. The concentrations of IS and PCS for this study are indicated in the figures. The representative results of immunofluorescent staining for LAMP1/NNT and Rab11/NNT were demonstrated.

**Supplementary Table 1: Lists of antibodies for western blot, immune-histological and immune-flourescent staining**

See Supplementary File 1