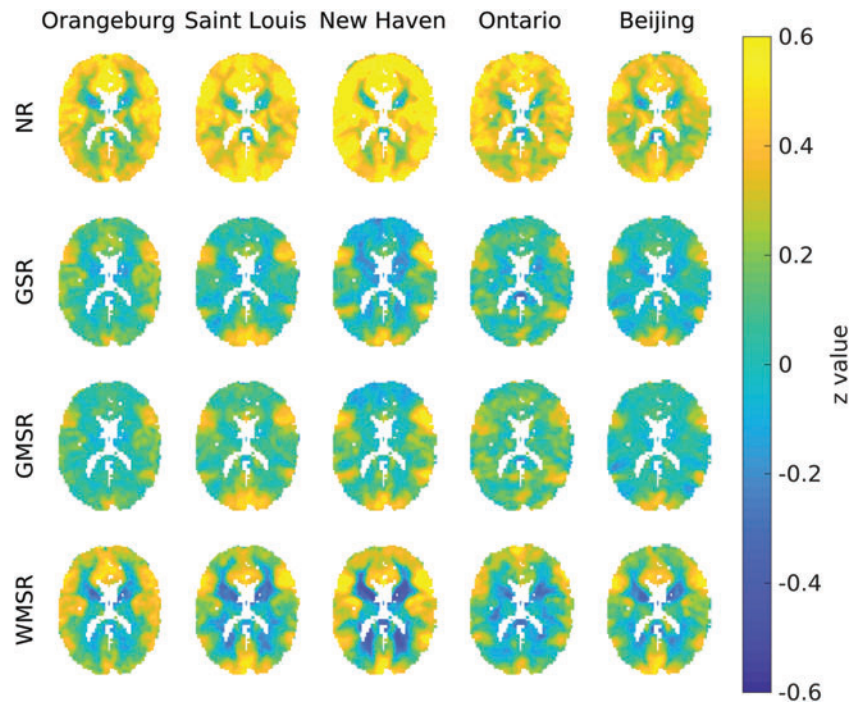


Supplementary Data



SUPPLEMENTARY FIG. S1. Effects of tissue-specific regression in combination with a bandpass filter (0.01–0.08 Hz) on appearance of negative functional connectivity. Single transverse slice is shown, nose up. Pearson correlations (expressed in z value) of all voxels' time series with the DMN averaged signal are shown for all experimental sites (columns) in the NR data (first row) and after GSR (second row), after GMSR (third row), and after WMSR (fourth row). All z values are averaged across subjects for each dataset. Signal regressions reveal comparable correlation patterns across the five datasets left of the vertical line. These observations shown for one slice are typical for all slices in the brain. DMN, default mode network; GSR, global signal regression; GMSR, gray matter signal regression; NR, nonregressed; WMSR, white matter signal regression.