

Figure S1: Determination of sub-lethal antibiotic concentrations for RNAseq
Mycobacterium abscessus was grown at 37°C in Middlebrook 7H9 (DIFCO) supplemented with 10% OADC and 0.05% Tween 20 to an A₆₀₀ of 0.6. Antibiotics were added to indicated concentrations for 3 hours followed by RNA extraction for RNAseq experiments. The viability of samples were assessed to ensure use of sublethal antibiotic concentrations by spotting a 10-fold serial dilution on 7H10/OADC plates.

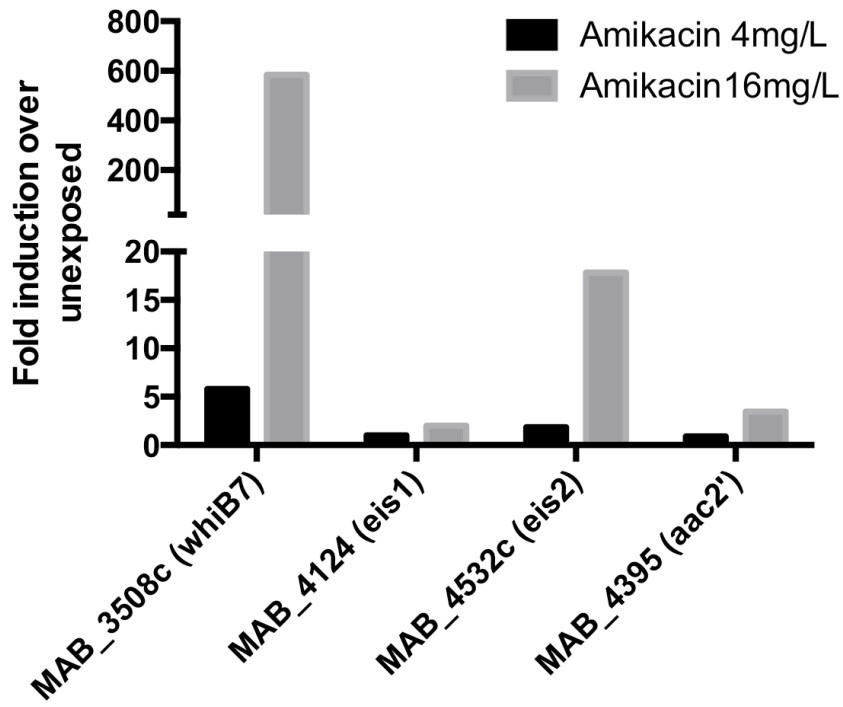


Figure S2: Effect of amikacin concentration on gene induction in *M. abscessus*

Fold induction of *whiB7*, *eis1*, *eis2* and *aac2* transcripts upon exposure to 2 concentrations of amikacin, over unexposed samples, as determined in RNAseq experiments.